

PRODUCT INFORMATION PACKET

Model No: 056T17D11046
Catalog No: K049A
1 HP General Purpose Motor, 3 phase, 1800 RPM, 575 V, 56 Frame, ODP
Three Phase ODP Motors



Regal and Marathon are trademarks of Regal Beloit Corporation or one of its affiliated companies.
©2020 Regal Beloit Corporation, All Rights Reserved. MC017097E





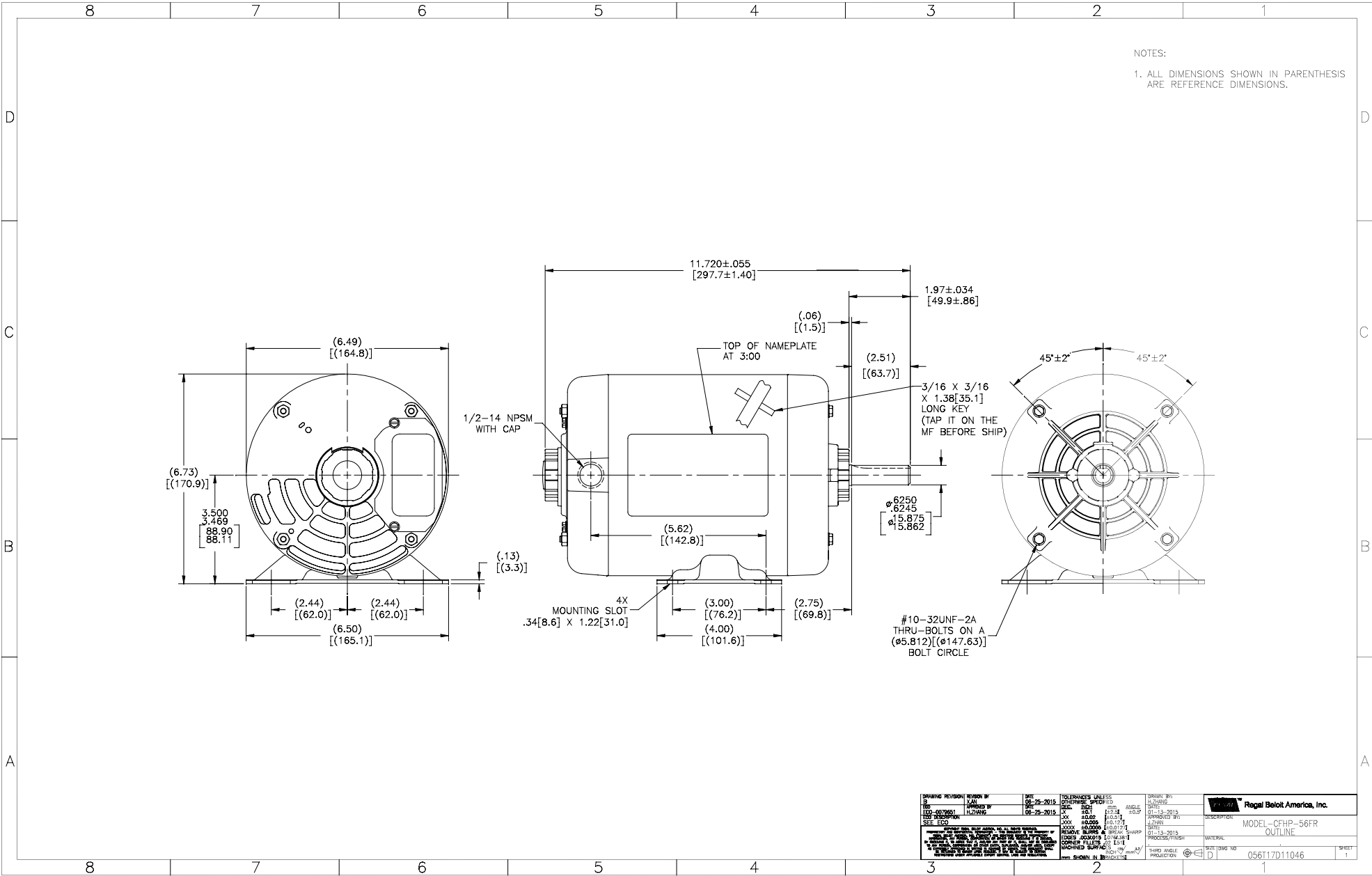
Nameplate Specifications

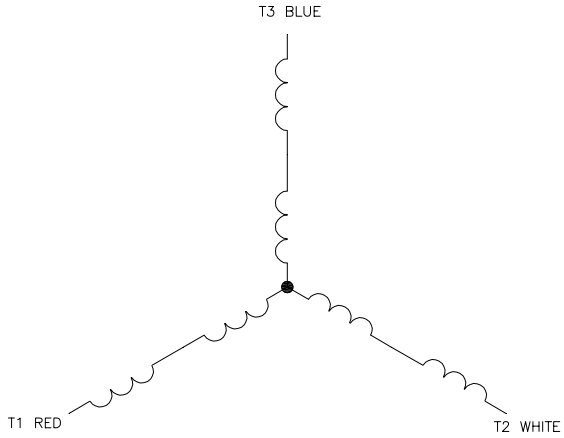
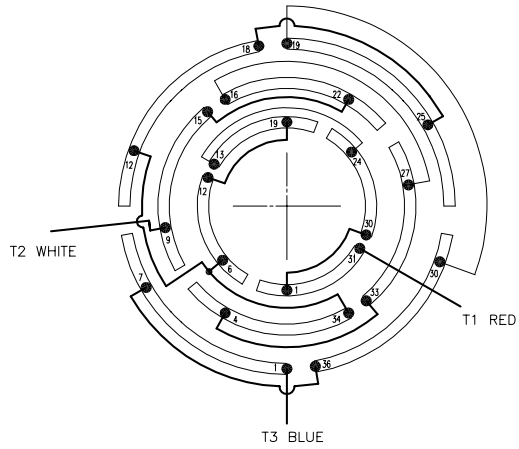
Output HP	1 Hp	Output KW	0.75 kW
Frequency	60 Hz	Voltage	575 V
Current	1.2 A	Speed	1725 rpm
Service Factor	1.15	Phase	3
Efficiency	83.5 %	Power Factor	56.1
Duty	Continuous	Insulation Class	B
Design Code	B	KVA Code	M
Frame	56	Enclosure	Drip Proof
Thermal Protection	No	Ambient Temperature	40 °C
Drive End Bearing Size	6203	Opp Drive End Bearing Size	6203
UL	Recognized	CSA	Y
CE	Y	IP Code	22

Technical Specifications

Electrical Type	Squirrel Cage Induction Run	Starting Method	Across The Line
Poles	4	Rotation	Reversible
Resistance Main	0 Ohms	Mounting	Rigid Base
Motor Orientation	Horizontal	Drive End Bearing	Ball
Opp Drive End Bearing	Ball	Frame Material	Rolled Steel
Shaft Type	T	Overall Length	11.75 in
Shaft Diameter	0.625 in	Shaft Extension	1.88 in
Assembly/Box Mounting	F1 OUT ODE BRKT RADIAL		
Connection Drawing	D0000567-001	Outline Drawing	056T17D11046-S01

This is an uncontrolled document once printed or downloaded and is subject to change without notice. Date Created:14/12/2020





- NOTES:
1. 36 SLOT 3° CCW ROTATION
 2. WHEN: PHASE ROTATION
A: T1; B:T2; C: T3

DRAWING REVISION: A	REVISION BY: R.ZHOU	DATE: 01-16-2015	TOLERANCES UNLESS OTHERWISE SPECIFIED	DRAWN BY: R.ZHOU
ECO: ECO-0069290	APPROVED BY: D.ZHANG	DATE: 01-16-2015	VEL: INCH DIM: ANGLE	DATE: 01-16-2015
ECO DESCRIPTION: NEW MODEL RELEASE			XX ±0.1 (±0.51)	APPROVED BY: D.ZHANG
NEW MODEL RELEASE			XXX ±0.005 (±0.127)	DATE: 01-16-2015
<small> COPYRIGHT REGAL BELLOTT AMERICA, INC. ALL RIGHTS RESERVED. PROPRIETARY AND CONFIDENTIAL INFORMATION - THIS DOCUMENT IS THE PROPERTY OF REGAL BELLOTT AMERICA, INC. PROPERTY AND COMPANY OWNER'S PROPRIETARY AND CONFIDENTIAL INFORMATION. ANY REPRODUCTION OR OTHER USE WITHOUT THE WRITTEN PERMISSION OF REGAL BELLOTT AMERICA, INC. IS STRICTLY PROHIBITED. BY RECEIVING IT, YOU AGREE THAT IT AND/OR ANY PART OF IT SHALL NOT BE DISCLOSED TO ANY PERSON, CORPORATION OR OTHER ENTITY, ORGANIZATION, INDUSTRY, GROUP OR COMPANY, WITHOUT THE WRITTEN PERMISSION OF REGAL BELLOTT AMERICA, INC. THIS DOCUMENT SHALL BE RETURNED TO ORDER LPO# 00000567-001 IF YOU ARE SUBJECT TO CERTAIN RESTRICTIONS UNDER APPLICABLE EXPORT CONTROL LAWS AND REGULATIONS. </small>			XXXX ±0.0005 (±0.0127) REMOVE BURRS & BREAK SHARP EDGES: 003X.015 (0.076X.051) CORNER FILLETS: 02 (1.51) MACHINED SURFACES: INCH (mm) 32 MIN SHOWN IN [BRACKETS]:	DESCRIPTION: CONN DIAGRAM-INTERNAL MATERIAL: _____ PROCESS/FINISH: _____
			THIRD ANGLE PROJECTION	SIZE: C DWG NO: D0000567-001 SHEET: 1



**P.O. BOX 8003
WAUSAU, WI 54401-8003
PH. 715-675-3311**

CERTIFICATION DATA SHEET

CUSTOMER:
ORDER #:
CONN. DIAGRAM: D0000567-001
OUTLINE: 056T17D11046
WINDING #: SS0070160 4

CUSTOMER PO#:
MODEL #: 56T17D11046 A
CUSTOMER PART #:
MOUNTING: F1 OUT ODE BRKT RADIAL

TYPICAL MOTOR PERFORMANCE DATA

HP	KW	SYNC. RPM	F.L. RPM	FRAME	ENCLOSURE	KVA CODE	DESIGN
1	0.75	1800	1725	56	DP	M	B

PH	Hz	VOLTS	AMPS	START TYPE	DUTY	INSL	S.F.	AMB°C
3	60	575	1.2	ACROSS THE LINE	CONTINUOUS	B3	1.15	40

FULL LOAD EFF:	83.5	3/4 LOAD EFF:	84.6	1/2 LOAD EFF:	80.3	GTD. EFF	ELEC. TYPE
FULL LOAD PF:	56.1	3/4 LOAD PF:	62	1/2 LOAD PF:	49	83.5	SQ CAGE IND RUN

F.L. TORQUE	LOCKED ROTOR AMPS	L.R. TORQUE	B.D. TORQUE	F.L. RISE°C
48 OZ-FT	10.8	170 OZ-FT	354 %	247 OZ-FT 515 %

SOUND PRESSURE @ 3 FT.	SOUND POWER	ROTOR WK^2	MAX. WK^2	SAFE STALL TIME	STARTS / HOUR	APPROX. MOTOR WGT
0 DBA	10 DBA	0 LB-FT^2	1.5 LB-FT^2	10 SEC.	2	35 LBS.

***** SUPPLEMENTAL INFORMATION *****

DE BRACKET TYPE	ODE BRACKET TYPE	MOUNT TYPE	ORIENTATION	SEVERE DUTY	HAZARDOUS LOCATION	DRIP COVER	SCREENS	PAINT
STANDARD	STANDARD	RIGID	HORIZONTAL	FALSE	NONE	FALSE	NONE	GRAY (ENAMEL)

BEARINGS		GREASE	SHAFT TYPE	SPECIAL DE	SPECIAL ODE	SHAFT MATERIAL	FRAME MATERIAL
DE	ODE						
BALL	BALL	POLYREX EM	T	NONE	NONE	AISI 1215 (MS1000)	ROLLED STEEL
6203	6203						

THERMO-PROTECTORS							
THERMOSTATS	PROTECTORS	WDG RTDS	BRG RTDS	THERMISTORS	CONTROL	SPACE HEATERS	
NONE	NOT	NONE	NONE	NONE	FALSE	NONE	VOLTS

INVERTER TORQUE: NONE
INV. HP SPEED RANGE: NONE

ENCODER: NONE
 NONE NONE
 NONE NONE PPR

BRAKE: NONE NONE
 NONE P/N NONE
 NONE NONE
 NONE FT-LB NONE V NONE HZ

S
E
T
O
N

PREPARED BY: Dinesh
 Suddula **DATE:**
 02/08/2019 03:14:16 AM
 FORM 3531 REV.3 02/07/99
 ** Subject to change without
 notice.



MARATHON ELECTRIC CORPORATION
TYPICAL PERFORMANCE CURVE for AC MOTOR

Customer

Curve at

575

Volts

HP 1.00

PHASE 3

Model No 56T17D11046

60

HZ

VOLTS 575

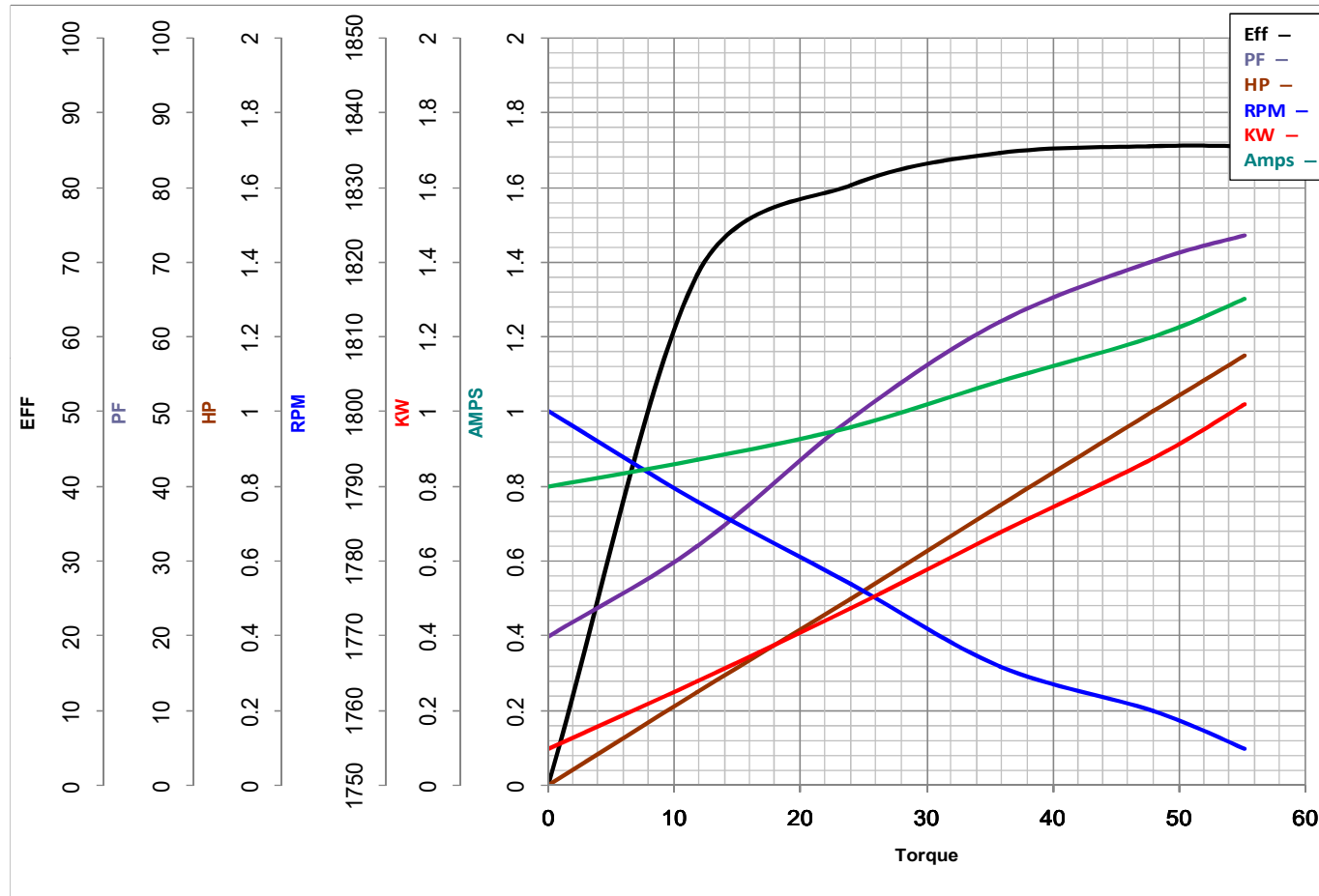
Catalog No K049A

1

HP

HZ 60

RPM 1725



Torque in Oz.Ft

FL TORQUE 48 Oz.Ft

BD TORQUE 247.0 Oz.Ft

LR TORQUE 170 Oz.Ft

WINDING SS0070160-4

FL AMPS 1.2

PU TORQUE 170.0 Oz.Ft

LR AMPS 10.8

Date 1/3/2019