

PRODUCT INFORMATION PACKET

marathon®
Motors

Model No: 056T17D15906

Catalog No: K250A

0.75 HP General Purpose Motor, 3 phase, 1800 RPM, 230/460 V, 56C Frame, ODP
Three Phase ODP Motors



Regal and Marathon are trademarks of Regal Beloit Corporation or one of its affiliated companies.
©2020 Regal Beloit Corporation, All Rights Reserved. MC017097E

REGAL

Nameplate Specifications

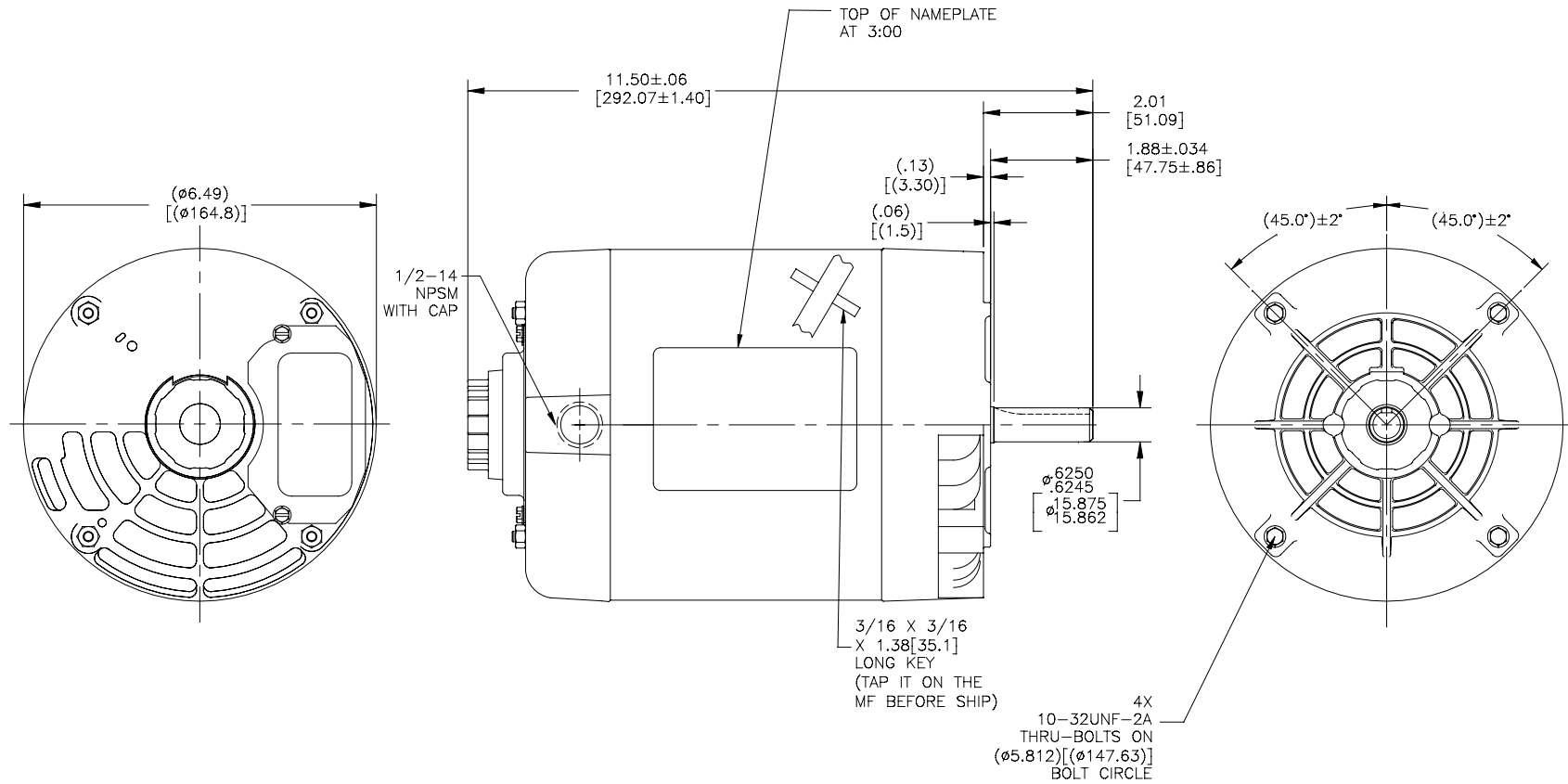
Output HP	0.75 Hp	Output KW	0.56 kW
Frequency	60 Hz	Voltage	230/460 V
Current	2.6/1.3 A	Speed	1725 rpm
Service Factor	1.25	Phase	3
Efficiency	81.1 %	Power Factor	71.1
Duty	Continuous	Insulation Class	B
Design Code	B	KVA Code	K
Frame	56C	Enclosure	Drip Proof
Thermal Protection	No	Ambient Temperature	40 °C
Drive End Bearing Size	6203	Opp Drive End Bearing Size	6203
UL	Recognized	CSA	Y
CE	Y	IP Code	22

Technical Specifications

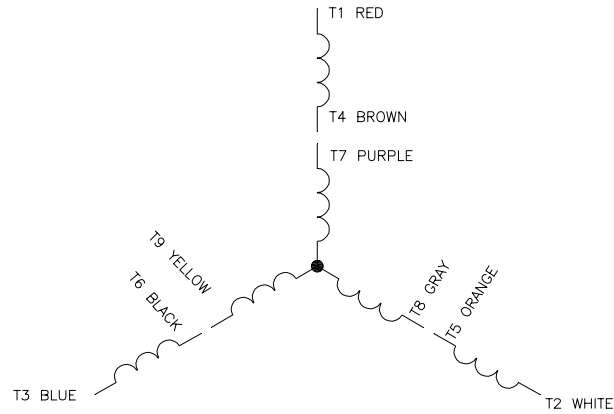
Electrical Type	Squirrel Cage Induction Run	Starting Method	Across The Line
Poles	4	Rotation	Reversible
Resistance Main	23 Ohms	Mounting	Round
Motor Orientation	Horizontal	Drive End Bearing	Ball
Opp Drive End Bearing	Ball	Frame Material	Rolled Steel
Shaft Type	T	Overall Length	11.50 in
Frame Length	8.25 in	Shaft Diameter	0.625 in
Shaft Extension	1.88 in	Assembly/Box Mounting	F1 OUT ODE BRKT RADIAL
Connection Drawing	D0000527-001	Outline Drawing	056T17D15906-S01

This is an uncontrolled document once printed or downloaded and is subject to change without notice. Date Created:14/12/2020

NOTE:

ALL DIMENSIONS SHOWN IN PARENTHESIS
ARE REFERENCE DIMENSIONS.

DRAWING REVISION BY B X.AN	DATE 06-25-2015	TOLERANCES UNLESS OTHERWISE SPECIFIED	DRAWN BY: X.AN	
ECO-0079651 SEE ECO	DATE 06-25-2015	DEC. INCH X ± 0.1 $[\pm 2.5]$ JXX ± 0.02 $[\pm 0.51]$ JXXX ± 0.005 $[\pm 0.127]$ JXXXX ± 0.0005 $[\pm 0.0127]$ REMOVE BURRS & BREAK SHARP EDGES .003/015 $[0.076/3.81]$ CORNER FILLETS .02 $[.51]$ MACHINED SURFACES INCH $\frac{1}{16}$ mm $\frac{1}{2}$ mm SHOWN IN BRACKETS	DATE: 01-13-2015 APPROVED BY: Y.LIU DATE: 01-13-2015 REFERENCE: -	
COPYRIGHT REGAL BELOIT AMERICA, INC. ALL RIGHTS RESERVED. PROPRIETARY AND CONFIDENTIAL INFORMATION - THIS DOCUMENT IS THE PROPERTY OF REGAL BELOIT AMERICA, INC. (HEREIN) AND CONTAINS OWNERS PROPRIETARY INFORMATION. ANY REPRODUCTION, DISTRIBUTION OR OTHER FORM RECEIVING IT IS STRICTLY PROHIBITED. BY RECEIVING IT, TO AGREE THAT IT, AND/OR ANY PART OF IT, SHALL NOT BE DISCLOSED TO ANY PERSON, CORPORATION OR OTHER ENTITY, WITHOUT THE WRITTEN CONSENT OF REGAL BELOIT AMERICA, INC. AS EXPRESSLY APPROVED IN WRITING BY REGAL BELOIT AMERICA, INC. THIS DOCUMENT SHALL BE RETURNED TO OWNER UPON REQUEST. IT MAY BE SUBJECT TO OTHER RESTRICTIONS UNDER APPLICABLE EXPORT CONTROL LAWS AND REGULATIONS.				DESCRIPTION MODEL-CFHP-56FR OUTLINE MATERIAL PROCESS/FINISH SIZE DWG NO 056T17D15906 SHEET 1



CONNECT AS FOLLOWS

HIGH VOLTAGE

- T1 - RED - LINE A
- T2 - WHITE - LINE B
- T3 - BLUE - LINE C
- T4 - BROWN \Rightarrow TIE TOGETHER
- T7 - PURPLE \Rightarrow TIE TOGETHER
- T5 - ORANGE \Rightarrow TIE TOGETHER
- T8 - GRAY \Rightarrow TIE TOGETHER
- T6 - BLACK \Rightarrow TIE TOGETHER
- T9 - YELLOW \Rightarrow TIE TOGETHER

LOW VOLTAGE

- T1 - RED \Rightarrow LINE A
- T7 - PURPLE \Rightarrow LINE A
- T2 - WHITE \Rightarrow LINE B
- T8 - GRAY \Rightarrow LINE B
- T3 - BLUE \Rightarrow LINE C
- T9 - YELLOW \Rightarrow LINE C
- T5 - ORANGE \Rightarrow TIE TOGETHER
- T6 - BLACK \Rightarrow TIE TOGETHER
- T4 - BROWN \Rightarrow TIE TOGETHER

NOTES:

- LEADS MAY BE MULTICOLORED AS SHOWN FOR GROUP -01 OR SINGLE COLOR FOR GROUP -02. IN EITHER CASE THE NUMBERING SEQUENCE WILL BE THE SAME.

CCW ROTATION; TO REVERSE ROTATION FOR EITHER VOLTAGE INTERCHANGE ANY TWO LINE LEADS

DRAWING REVISION		REVISION BY	DATE	TOLERANCES UNLESS OTHERWISE SPECIFIED		DRAWN BY:	
A		R. RASCON	06-12-2014	DEC INCH mm ANGLE		R. RASCON	
ECO		APPROVED BY	DATE	X ± 0.1 (42.5) ± 0.5		DATE:	
0053303				XX ± 0.02 (40.51)		06-12-2014	
ECO DESCRIPTION		NEW MODEL RELEASE		XXX ± 0.005 (40.127)		APPROVED BY:	
				XXXX ± 0.0005 (40.0127)		DATE:	
				REMOVE BURRS & BREAK SHARP		DESCRIPTION	
				EDGES .003/.015 (.076/.381)		CONN DIAGRAM-EXTERNAL	
				CORNER FILLETS .02 (.51)		MATERIAL	
				MACHINED SURFACES		PROCESS/FINISH	
				mm SHOWN IN [BRACKETS]		SIZE DWG NO	
						C D0000527-001	
						SHEET	
						1	

OUTLINE: 056T17D15906-S01

TYPICAL MOTOR PERFORMANCE DATA

*** SUPPLEMENTAL INFORMATION ***

THERMO-PROTECTORS				THERMISTORS	CONTROL	SPACE /n HEATERS
THERMOSTATS	PROTECTORS	WDG RTDs	BRG RTDs			
NONE	NOT	NONE	NONE	NONE	FALSE	NONE VOLTS

INVERTER TORQUE: NONE			
INV. HP SPEED RANGE: NONE			
ENCODER: NONE			
NONE NONE			
NONE NONE PPR			
BRAKE: NONE NONE			
NONE P/N NONE			
NONE NONE			
NONE FT-I R		NONE V	NONE H ₂

DATE: 06/28/2017 05:18:26 AM
FORM 3531 REV.3 02/07/99

** Subject to change without notice.