

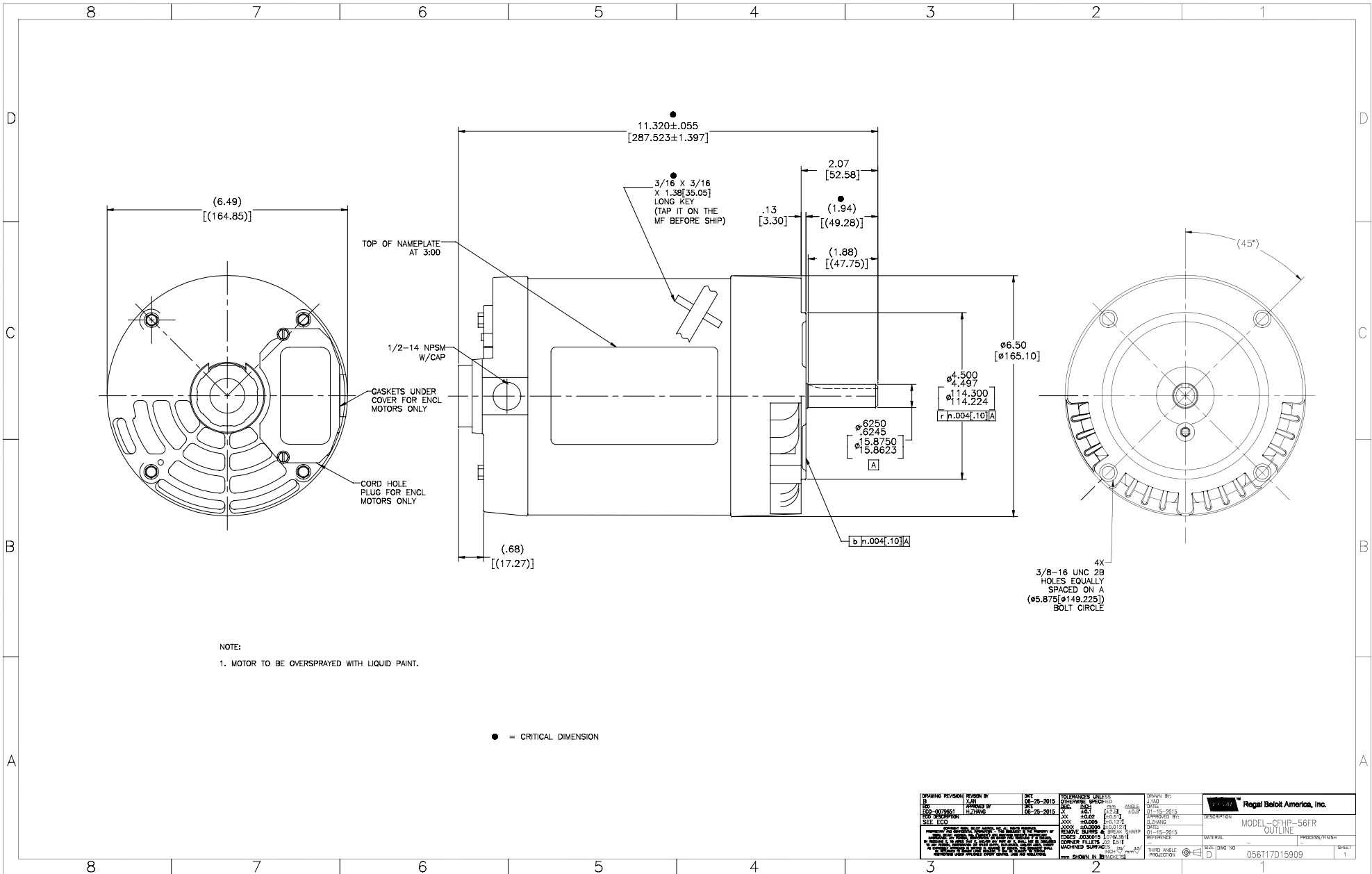
Nameplate Specifications

Output HP	0.50 Hp	Output KW	0.37 kW
Frequency	60 Hz	Voltage	230/460 V
Current	1.7/0.85 A	Speed	1725 rpm
Service Factor	1.25	Phase	3
Efficiency	78.2 %	Power Factor	69.4
Duty	Continuous	Insulation Class	B
Design Code	B	KVA Code	K
Frame	56C	Enclosure	Drip Proof
Thermal Protection	No	Ambient Temperature	40 °C
Drive End Bearing Size	6203	Opp Drive End Bearing Size	6203
UL	Recognized	CSA	Y
CE	Y	IP Code	22

Technical Specifications

Electrical Type	Squirrel Cage Induction Run	Starting Method	Across The Line
Poles	4	Rotation	Reversible
Resistance Main	0 Ohms	Mounting	Round
Motor Orientation	Horizontal	Drive End Bearing	Ball
Opp Drive End Bearing	Ball	Frame Material	Rolled Steel
Shaft Type	T	Overall Length	11.31 in
Shaft Diameter	0.625 in	Shaft Extension	1.88 in
Assembly/Box Mounting	F1 OUT ODE BRKT RADIAL		
Connection Drawing	D0000527-001	Outline Drawing	056T17D15909-S01

This is an uncontrolled document once printed or downloaded and is subject to change without notice. Date Created:14/12/2020



DRAWING REVISIONS		DATE	BY	REASON	DATE	BY	REASON	DATE	BY	REASON	DATE	BY	REASON
1	ISSUED	06-25-2015	XAN		06-25-2015	XAN		06-25-2015	XAN		06-25-2015	XAN	
2	REVISED	06-25-2015	HLTWANG		06-25-2015	HLTWANG		06-25-2015	HLTWANG		06-25-2015	HLTWANG	
3	REVISED	06-25-2015	HLTWANG		06-25-2015	HLTWANG		06-25-2015	HLTWANG		06-25-2015	HLTWANG	
4	REVISED	06-25-2015	HLTWANG		06-25-2015	HLTWANG		06-25-2015	HLTWANG		06-25-2015	HLTWANG	
5	REVISED	06-25-2015	HLTWANG		06-25-2015	HLTWANG		06-25-2015	HLTWANG		06-25-2015	HLTWANG	
6	REVISED	06-25-2015	HLTWANG		06-25-2015	HLTWANG		06-25-2015	HLTWANG		06-25-2015	HLTWANG	
7	REVISED	06-25-2015	HLTWANG		06-25-2015	HLTWANG		06-25-2015	HLTWANG		06-25-2015	HLTWANG	
8	REVISED	06-25-2015	HLTWANG		06-25-2015	HLTWANG		06-25-2015	HLTWANG		06-25-2015	HLTWANG	
9	REVISED	06-25-2015	HLTWANG		06-25-2015	HLTWANG		06-25-2015	HLTWANG		06-25-2015	HLTWANG	
10	REVISED	06-25-2015	HLTWANG		06-25-2015	HLTWANG		06-25-2015	HLTWANG		06-25-2015	HLTWANG	
11	REVISED	06-25-2015	HLTWANG		06-25-2015	HLTWANG		06-25-2015	HLTWANG		06-25-2015	HLTWANG	
12	REVISED	06-25-2015	HLTWANG		06-25-2015	HLTWANG		06-25-2015	HLTWANG		06-25-2015	HLTWANG	
13	REVISED	06-25-2015	HLTWANG		06-25-2015	HLTWANG		06-25-2015	HLTWANG		06-25-2015	HLTWANG	
14	REVISED	06-25-2015	HLTWANG		06-25-2015	HLTWANG		06-25-2015	HLTWANG		06-25-2015	HLTWANG	
15	REVISED	06-25-2015	HLTWANG		06-25-2015	HLTWANG		06-25-2015	HLTWANG		06-25-2015	HLTWANG	
16	REVISED	06-25-2015	HLTWANG		06-25-2015	HLTWANG		06-25-2015	HLTWANG		06-25-2015	HLTWANG	
17	REVISED	06-25-2015	HLTWANG		06-25-2015	HLTWANG		06-25-2015	HLTWANG		06-25-2015	HLTWANG	
18	REVISED	06-25-2015	HLTWANG		06-25-2015	HLTWANG		06-25-2015	HLTWANG		06-25-2015	HLTWANG	
19	REVISED	06-25-2015	HLTWANG		06-25-2015	HLTWANG		06-25-2015	HLTWANG		06-25-2015	HLTWANG	
20	REVISED	06-25-2015	HLTWANG		06-25-2015	HLTWANG		06-25-2015	HLTWANG		06-25-2015	HLTWANG	
21	REVISED	06-25-2015	HLTWANG		06-25-2015	HLTWANG		06-25-2015	HLTWANG		06-25-2015	HLTWANG	
22	REVISED	06-25-2015	HLTWANG		06-25-2015	HLTWANG		06-25-2015	HLTWANG		06-25-2015	HLTWANG	
23	REVISED	06-25-2015	HLTWANG		06-25-2015	HLTWANG		06-25-2015	HLTWANG		06-25-2015	HLTWANG	
24	REVISED	06-25-2015	HLTWANG		06-25-2015	HLTWANG		06-25-2015	HLTWANG		06-25-2015	HLTWANG	
25	REVISED	06-25-2015	HLTWANG		06-25-2015	HLTWANG		06-25-2015	HLTWANG		06-25-2015	HLTWANG	
26	REVISED	06-25-2015	HLTWANG		06-25-2015	HLTWANG		06-25-2015	HLTWANG		06-25-2015	HLTWANG	
27	REVISED	06-25-2015	HLTWANG		06-25-2015	HLTWANG		06-25-2015	HLTWANG		06-25-2015	HLTWANG	
28	REVISED	06-25-2015	HLTWANG		06-25-2015	HLTWANG		06-25-2015	HLTWANG		06-25-2015	HLTWANG	
29	REVISED	06-25-2015	HLTWANG		06-25-2015	HLTWANG		06-25-2015	HLTWANG		06-25-2015	HLTWANG	
30	REVISED	06-25-2015	HLTWANG		06-25-2015	HLTWANG		06-25-2015	HLTWANG		06-25-2015	HLTWANG	
31	REVISED	06-25-2015	HLTWANG		06-25-2015	HLTWANG		06-25-2015	HLTWANG		06-25-2015	HLTWANG	
32	REVISED	06-25-2015	HLTWANG		06-25-2015	HLTWANG		06-25-2015	HLTWANG		06-25-2015	HLTWANG	
33	REVISED	06-25-2015	HLTWANG		06-25-2015	HLTWANG		06-25-2015	HLTWANG		06-25-2015	HLTWANG	
34	REVISED	06-25-2015	HLTWANG		06-25-2015	HLTWANG		06-25-2015	HLTWANG		06-25-2015	HLTWANG	
35	REVISED	06-25-2015	HLTWANG		06-25-2015	HLTWANG		06-25-2015	HLTWANG		06-25-2015	HLTWANG	
36	REVISED	06-25-2015	HLTWANG		06-25-2015	HLTWANG		06-25-2015	HLTWANG		06-25-2015	HLTWANG	
37	REVISED	06-25-2015	HLTWANG		06-25-2015	HLTWANG		06-25-2015	HLTWANG		06-25-2015	HLTWANG	
38	REVISED	06-25-2015	HLTWANG		06-25-2015	HLTWANG		06-25-2015	HLTWANG		06-25-2015	HLTWANG	
39	REVISED	06-25-2015	HLTWANG		06-25-2015	HLTWANG		06-25-2015	HLTWANG		06-25-2015	HLTWANG	
40	REVISED	06-25-2015	HLTWANG		06-25-2015	HLTWANG		06-25-2015	HLTWANG		06-25-2015	HLTWANG	
41	REVISED	06-25-2015	HLTWANG		06-25-2015	HLTWANG		06-25-2015	HLTWANG		06-25-2015	HLTWANG	
42	REVISED	06-25-2015	HLTWANG		06-25-2015	HLTWANG		06-25-2015	HLTWANG		06-25-2015	HLTWANG	
43	REVISED	06-25-2015	HLTWANG		06-25-2015	HLTWANG		06-25-2015	HLTWANG		06-25-2015	HLTWANG	
44	REVISED	06-25-2015	HLTWANG		06-25-2015	HLTWANG		06-25-2015	HLTWANG		06-25-2015	HLTWANG	
45	REVISED	06-25-2015	HLTWANG		06-25-2015	HLTWANG		06-25-2015	HLTWANG		06-25-2015	HLTWANG	
46	REVISED	06-25-2015	HLTWANG		06-25-2015	HLTWANG		06-25-2015	HLTWANG		06-25-2015	HLTWANG	
47	REVISED	06-25-2015	HLTWANG		06-25-2015	HLTWANG		06-25-2015	HLTWANG		06-25-2015	HLTWANG	
48	REVISED	06-25-2015	HLTWANG		06-25-2015	HLTWANG		06-25-2015	HLTWANG		06-25-2015	HLTWANG	
49	REVISED	06-25-2015	HLTWANG		06-25-2015	HLTWANG		06-25-2015	HLTWANG		06-25-2015	HLTWANG	
50	REVISED	06-25-2015	HLTWANG		06-25-2015	HLTWANG		06-25-2015	HLTWANG		06-25-2015	HLTWANG	
51	REVISED	06-25-2015	HLTWANG		06-25-2015	HLTWANG		06-25-2015	HLTWANG		06-25-2015	HLTWANG	
52	REVISED	06-25-2015	HLTWANG		06-25-2015	HLTWANG		06-25-2015	HLTWANG		06-25-2015	HLTWANG	
53	REVISED	06-25-2015	HLTWANG		06-25-2015	HLTWANG		06-25-2015	HLTWANG		06-25-2015	HLTWANG	
54	REVISED	06-25-2015	HLTWANG		06-25-2015	HLTWANG		06-25-2015	HLTWANG		06-25-2015	HLTWANG	
55	REVISED	06-25-2015	HLTWANG		06-25-2015	HLTWANG		06-25-2015	HLTWANG		06-25-2015	HLTWANG	
56	REVISED	06-25-2015	HLTWANG		06-25-2015	HLTWANG		06-25-2015	HLTWANG		06-25-2015	HLTWANG	
57	REVISED	06-25-2015	HLTWANG		06-25-2015	HLTWANG		06-25-2015	HLTWANG		06-25-2015	HLTWANG	
58	REVISED	06-25-2015	HLTWANG		06-25-2015	HLTWANG		06-25-2015	HLTWANG		06-25-2015	HLTWANG	
59	REVISED	06-25-2015	HLTWANG		06-25-2015	HLTWANG		06-25-2015	HLTWANG		06-25-2015	HLTWANG	
60	REVISED	06-25-2015	HLTWANG		06-25-2015	HLTWANG		06-25-2015	HLTWANG		06-25-2015	HLTWANG	
61	REVISED	06-25-2015	HLTWANG		06-25-2015	HLTWANG		06-25-2015	HLTWANG		06-25-2015	HLTWANG	
62	REVISED	06-25-2015	HLTWANG		06-25-2015	HLTWANG		06-25-2015	HLTWANG		06-25-2015	HLTWANG	
63	REVISED	06-25-2015	HLTWANG		06-25-2015	HLTWANG		06-25-2015	HLTWANG		06-25-2015	HLTWANG	
64	REVISED	06-25-2015	HLTWANG		06-25-2015	HLTWANG		06-25-2015	HLTWANG		06-25-2015	HLTWANG	
65	REVISED	06-25-2015	HLTWANG		06-25-2015	HLTWANG		06-25-2015	HLTWANG		06-25-2015	HLTWANG	
66	REVISED	06-25-2015	HLTWANG		06-25-2015	HLTWANG		06-25-2015	HLTWANG		06-25-2015	HLTWANG	
67	REVISED	06-25-2015	HLTWANG		06-25-2015	HLTWANG		06-25-2015	HLTWANG		06-25-2015	HLTWANG	
68	REVISED	06-25-2015	HLTWANG		06-25-2015	HLTWANG		06-25-2015	HLTWANG		06-25-2015	HLTWANG	
69	REVISED	06-25-2015	HLTWANG		06-25-2015	HLTWANG		06-25-2015	HLTWANG		06-25-2015	HLTWANG	
70	REVISED	06-25-2015	HLTWANG		06-25-2015	HLTWANG		06-25-2015	HLTWANG		06-25-2015	HLTWANG	
71	REVISED	06-25-2015	HLTWANG		06-25-2015	HLTWANG		06-25-2015	HLTWANG		06-25-2015	HLTWANG	
72	REVISED	06-25-2015	HLTWANG		06-25-2015	HLTWANG		06-25-2015	HLTWANG		06-25-2015	HLTWANG	
73	REVISED	06-25-2015	HLTWANG		06-25-2015	HLTWANG		06-25-2015	HLTWANG		06-25-2015	HLTWANG	
74	REVISED	06-25-2015	HLTWANG		06-25-2015	HLTWANG		06-25-2015	HLTWANG		06-25-2015	HLTWANG	
75	REVISED	06-25-2015	HLTWANG		06-25-2015	HLTWANG		06-25-2015	HLTWANG		06-25-2015	HLTWANG	
76	REVISED	06-25-2015	HLTWANG		06-25-2015	HLTWANG		06-25-2015	HLTWANG		06-25-2015	HLTWANG	
77	REVISED	06-25-2015	HLTWANG		06-25-2015	HLTWANG		06-25-2015	HLTWANG		06-25-2015	HLTWANG	
78	REVISED	06-25-2015	HLTWANG		06-25-2015	HLTWANG		06-25-2015	HLTWANG		06-25-2015	HLTWANG	
79	REVISED	06-25-2015	HLTWANG		06-25-2015	HLTWANG		06-25-2015	HLTWANG		06-25-2015	HLTWANG	
80	REVISED	06-25-2015	HLTWANG		06-25-2015	HLTWANG		06-25-2015	HLTWANG		06-25-2015	HLTWANG	
81	REVISED	06-25-2015											

4

3

2

1

D

D

C

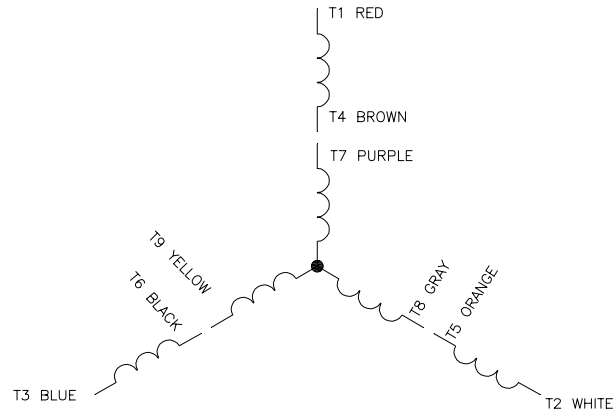
C

B

B

A

A



CONNECT AS FOLLOWS

HIGH VOLTAGE

- T1 - RED - LINE A
- T2 - WHITE - LINE B
- T3 - BLUE - LINE C
- T4 - BROWN -> TIE TOGETHER
- T7 - PURPLE -> TIE TOGETHER
- T5 - ORANGE -> TIE TOGETHER
- T8 - GRAY -> TIE TOGETHER
- T6 - BLACK -> TIE TOGETHER
- T9 - YELLOW -> TIE TOGETHER

LOW VOLTAGE

- T1 - RED -> LINE A
- T7 - PURPLE -> LINE A
- T2 - WHITE -> LINE B
- T8 - GRAY -> LINE B
- T3 - BLUE -> LINE C
- T9 - YELLOW -> LINE C
- T5 - ORANGE -> TIE TOGETHER
- T6 - BLACK -> TIE TOGETHER
- T4 - BROWN -> TIE TOGETHER

NOTES:

1. LEADS MAY BE MULTICOLORED AS SHOWN FOR GROUP -01 OR SINGLE COLOR FOR GROUP -02. IN EITHER CASE THE NUMBERING SEQUENCE WILL BE THE SAME.

CCW ROTATION; TO REVERSE ROTATION FOR EITHER VOLTAGE INTERCHANGE ANY TWO LINE LEADS

DRAWING REVISION A	REVISION BY R. RASCON	DATE 06-12-2014	TOLERANCES UNLESS OTHERWISE SPECIFIED DEC INCH DIM. ANGLE .X ±0.1 (±2.5) ±0.5° .XX ±0.02 (±0.51) .XXX ±0.005 (±0.127) .XXXX ±0.0005 (±0.0127)	DRAWN BY: R. RASCON	Regal Beloit America, Inc.
ECC 0053303	APPROVED BY	DATE	REMOVE BURRS & BREAK SHARP EDGES .003/.015 (.076/.381) CORNER FILLETS .02 (.51) MACHINED SURFACES .001/.002 (±0.025) (±0.51) mm SHOWN IN BRACKETS	DATE: 06-12-2014	
TEST DESCRIPTION NEW MODEL RELEASE			DATE:	APPROVED BY:	DESCRIPTION CONN DIAGRAM-EXTERNAL
<small> COPYRIGHT REGAL BELOIT AMERICA, INC. ALL RIGHTS RESERVED. PROPRIETARY AND CONFIDENTIAL INFORMATION - THIS DOCUMENT IS THE PROPERTY OF REGAL BELOIT AMERICA, INC. COMPANY AND COMPANY OFFICERS. INFORMATION. ANY REPRODUCTION OR OTHER USE, WITHOUT THE WRITTEN PERMISSION OF REGAL BELOIT AMERICA, INC. IS STRICTLY PROHIBITED. THIS DOCUMENT SHALL BE RETURNED TO REGAL BELOIT AMERICA, INC. IMMEDIATELY UPON REQUEST. NO PART OF THIS DOCUMENT SHALL BE REPRODUCED OR TRANSMITTED IN ANY FORM OR BY ANY MEANS, ELECTRONIC OR MECHANICAL, INCLUDING PHOTOCOPYING, RECORDING, OR BY ANY INFORMATION STORAGE AND RETRIEVAL SYSTEM, WITHOUT THE WRITTEN PERMISSION OF REGAL BELOIT AMERICA, INC. </small>			REFERENCE	MATERIAL	PROCESS/FINISH
			THIRD ANGLE PROJECTION	SIZE DWG NO C	D0000527-001
					SHEET 1

4

3

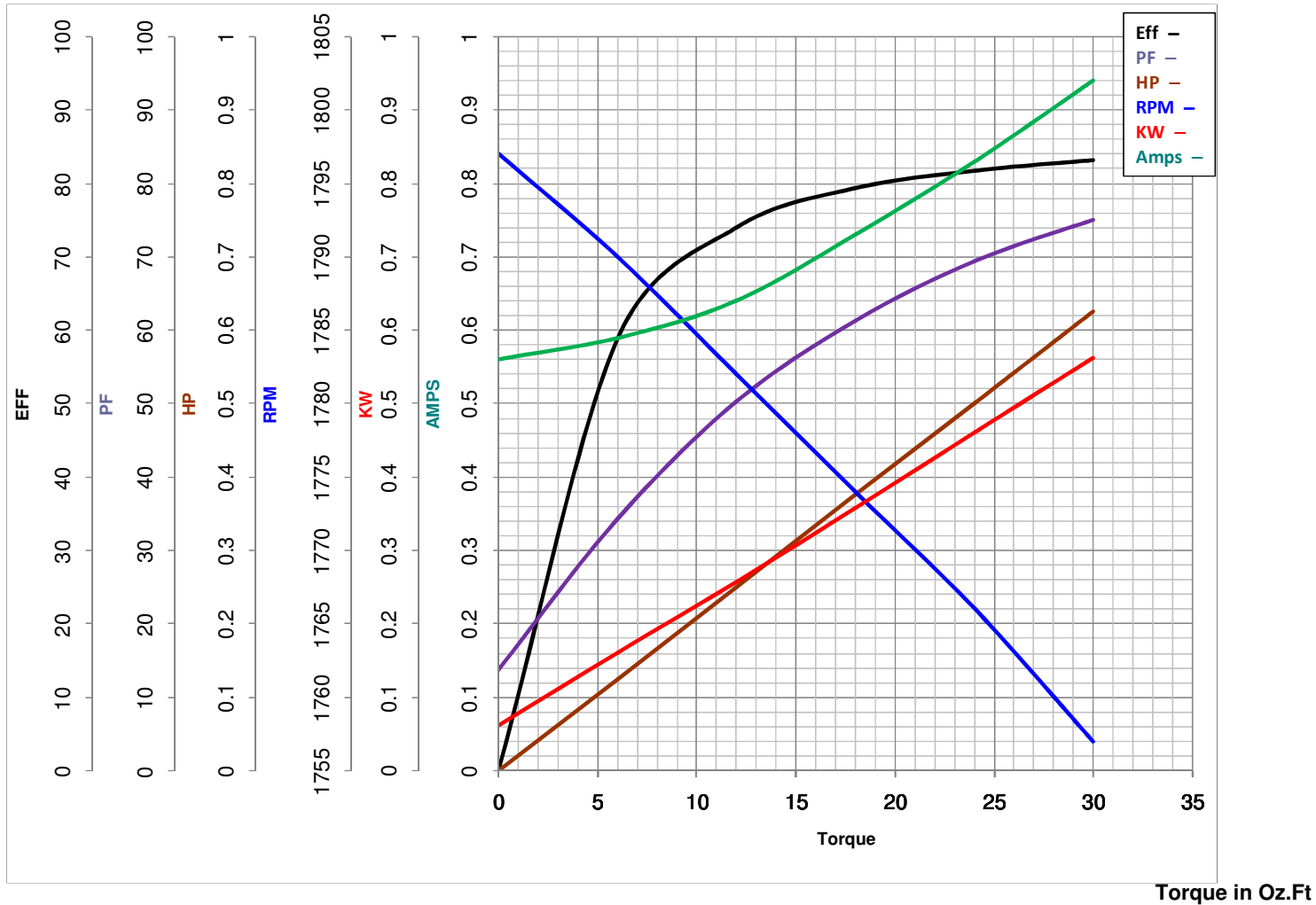
2

1



MARATHON ELECTRIC CORPORATION
TYPICAL PERFORMANCE CURVE for AC MOTOR

Customer _____ Curve at 460 Volts HP 0.5&0.33 PHASE 3
 Model No 56T17D15909 60 HZ
0.5 HP VOLTS 230/460&190/380
 Catalog No K249A HZ 60&50 RPM 1725&1425



FL TORQUE	<u>24</u> Oz.Ft	FL AMPS	<u>1.7/0.85</u>
BD TORQUE	<u>123.1</u> Oz.Ft	PU TORQUE	<u>79.1</u> Oz.Ft
LR TORQUE	<u>87.94</u> Oz.Ft	LR AMPS	<u>7.06</u>
WINDING	SS-0053303-	Date	3/5/2019