

PRODUCT INFORMATION PACKET

Model No: 056T17D15912

Catalog No: K521A

1.50 HP General Purpose Motor, 3 phase, 1800 RPM, 230/460 V, 56C Frame, ODP
Three Phase ODP Motors



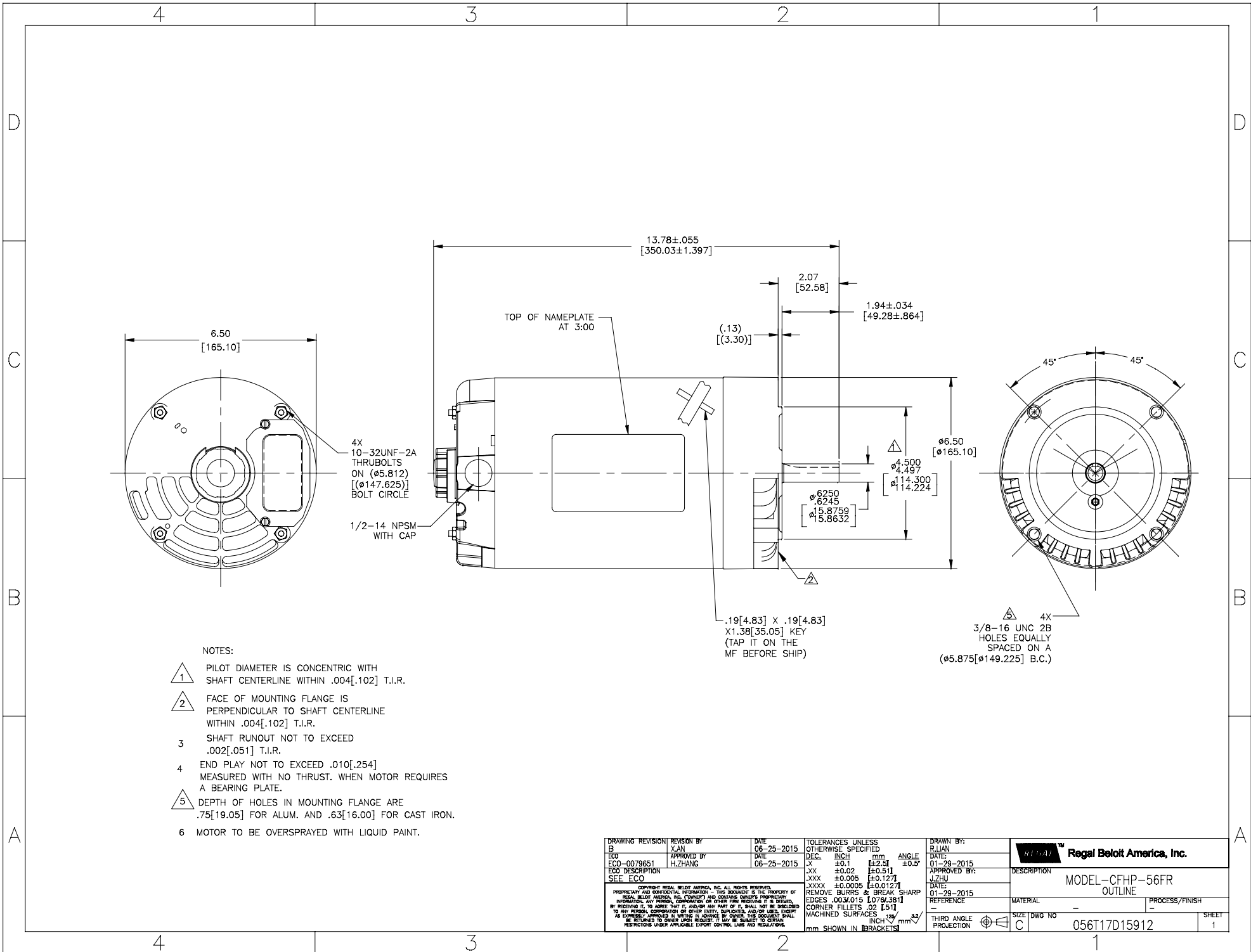
Nameplate Specifications

Output HP	1.50 Hp	Output KW	1.1 kW
Frequency	60 Hz	Voltage	230/460 V
Current	4.6/2.3 A	Speed	1725 rpm
Service Factor	1.15	Phase	3
Efficiency	86.5 %	Power Factor	70
Duty	Continuous	Insulation Class	B
Design Code	B	KVA Code	N
Frame	56C	Enclosure	Drip Proof
Thermal Protection	No	Ambient Temperature	40 °C
Drive End Bearing Size	6203	Opp Drive End Bearing Size	6203
UL	Recognized	CSA	Y
CE	Y	IP Code	22

Technical Specifications

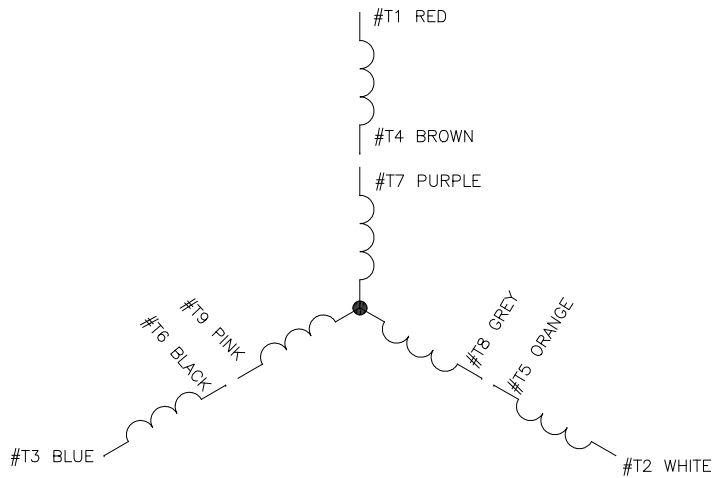
Electrical Type	Squirrel Cage Induction Run	Starting Method	Across The Line
Poles	4	Rotation	Reversible
Resistance Main	6 Ohms	Mounting	Round
Motor Orientation	Horizontal	Drive End Bearing	Ball
Opp Drive End Bearing	Ball	Frame Material	Rolled Steel
Shaft Type	T	Overall Length	13.78 in
Frame Length	8.25 in	Shaft Diameter	0.625 in
Shaft Extension	1.93 in	Assembly/Box Mounting	F1 OUT ODE BRKT RADIAL
Outline Drawing	056T17D15912-S01	Connection Drawing	D0000561-001

This is an uncontrolled document once printed or downloaded and is subject to change without notice. Date Created:14/12/2020



- NOTES:
- PILOT DIAMETER IS CONCENTRIC WITH SHAFT CENTERLINE WITHIN .004[.102] T.I.R.
 - FACE OF MOUNTING FLANGE IS PERPENDICULAR TO SHAFT CENTERLINE WITHIN .004[.102] T.I.R.
 - SHAFT RUNOUT NOT TO EXCEED .002[.051] T.I.R.
 - END PLAY NOT TO EXCEED .010[.254] MEASURED WITH NO THRUST. WHEN MOTOR REQUIRES A BEARING PLATE.
 - DEPTH OF HOLES IN MOUNTING FLANGE ARE .75[19.05] FOR ALUM. AND .63[16.00] FOR CAST IRON.
 - MOTOR TO BE OVERSPRAYED WITH LIQUID PAINT.

DRAWING REVISION: B	REVISION BY: X.AN	DATE: 06-25-2015	TOLERANCES UNLESS OTHERWISE SPECIFIED	DRAWN BY: R.LIAN
ECO-0079651	APPROVED BY: H.ZHANG	DATE: 06-25-2015	DEC. INCH mm ANGLE	DATE: 01-29-2015
SEE ECO			X ±.01 [±.25]	APPROVED BY: J.ZHU
			JXX ±0.02 [±0.51]	DATE: 01-29-2015
			.XXX ±0.005 [±0.127]	REFERENCE: -
			.XXXX ±0.0005 [±0.0127]	MATERIAL: -
			REMOVE BURRS & BREAK SHARP EDGES .003[.015] [Ø76.381]	PROCESS/FINISH: -
			CORNER FILLETS .02 [51]	SIZE DWG NO: 056T17D15912
			WASHED SURFACES	SHEET: 1
			INCH mm	
			mm SHOWN IN BRACKETS	



CONNECT AS FOLLOWS

HIGH VOLTAGE	
#T1 - RED	LINE A
#T2 - WHITE	LINE B
#T3 - BLUE	LINE C
#T4 - BROWN	TIE TOGETHER
#T7 - PURPLE	TIE TOGETHER
#T5 - ORANGE	TIE TOGETHER
#T8 - GREY	TIE TOGETHER
#T6 - BLACK	TIE TOGETHER
#T9 - PINK	TIE TOGETHER

LOW VOLTAGE	
#T1 - RED	LINE A
#T7 - PURPLE	LINE B
#T2 - WHITE	LINE B
#T8 - GREY	LINE C
#T3 - BLUE	LINE C
#T9 - PINK	TIE TOGETHER
#T5 - ORANGE	TIE TOGETHER
#T6 - BLACK	TIE TOGETHER
#T4 - BROWN	TIE TOGETHER

NOTES:

1. LEADS MAY BE MULTICOLORED AS SHOWN FOR GROUP -01 OR SINGLE COLOR FOR GROUP -02. IN EITHER CASE THE NUMBERING SEQUENCE WILL BE THE SAME.

OPTIONAL CORD CONNECTION WHEN SPECIFIED IN BOM
 LINE A WHITE
 LINE B RED
 LINE C BLACK

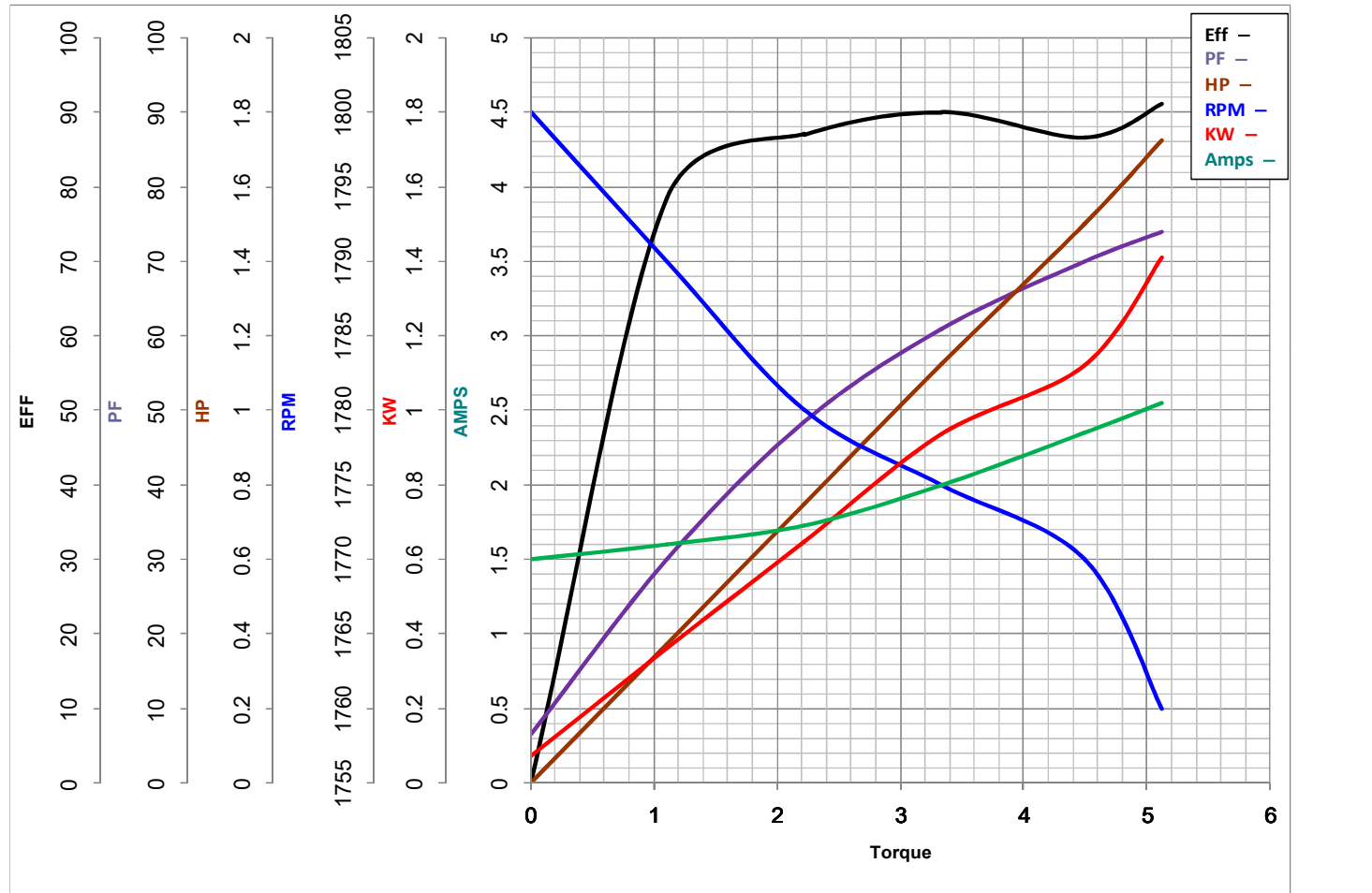
DRAWING REVISION A	REVISION BY H.ZHANG	DATE 12-11-2014	TOLERANCES UNLESS OTHERWISE SPECIFIED DEC. INCH mm ANGLE X ±0.1 [±2.5] ±0.5° XX ±0.02 [±0.51] .XXX ±0.005 [±0.127] XXXX ±0.0005 [±0.0127]	DRAWN BY: H.ZHANG	Regal Beloit America, Inc.
ECD-0067205	APPROVED BY J.ZHAN	DATE 12-11-2014	REMOVE BURRS & BREAK SHARP EDGES .003/.015 [076/.381] CORNER FILLETS .02 [.51] MACHINED SURFACES INCH mm THIRD ANGLE PROJECTION	DATE: 12-11-2014	
NEW				APPROVED BY: J.ZHAN	DESCRIPTION CONN DIAGRAM-EXTERNAL
<small>COPYRIGHT REGAL BELOIT AMERICA, INC. ALL RIGHTS RESERVED. PROPRIETARY AND CONFIDENTIAL INFORMATION - THIS DOCUMENT IS THE PROPERTY OF REGAL BELOIT AMERICA, INC. ("OWNER") AND CONTAINS OWNER'S PROPRIETARY INFORMATION. ANY REPRODUCTION OR OTHER USE WITHOUT THE WRITTEN PERMISSION OF REGAL BELOIT AMERICA, INC. IS STRICTLY PROHIBITED. BY RECEIVING IT, TO AGREE THAT IT, AND/OR ANY PART OF IT, SHALL NOT BE DISCLOSED TO ANY PERSON, CORPORATION OR OTHER ENTITY, SUPPLIER, AND/OR USER EXCEPT AS EXPRESSLY APPROVED IN WRITING BY OWNER. THIS DOCUMENT SHALL BE RETURNED TO OWNER UPON REQUEST. IT MAY BE SUBJECT TO CERTAIN RESTRICTIONS UNDER APPLICABLE EXPORT CONTROL LAWS AND REGULATIONS.</small>			DATE: 12-11-2014	MATERIAL	PROCESS/FINISH
			mm SHOWN IN BRACKETS	REFERENCE	SIZE DWG NO D0000561-001
				THIRD ANGLE PROJECTION	SHEET 1

** Subject to change without notice.



MARATHON ELECTRIC CORPORATION
TYPICAL PERFORMANCE CURVE for AC MOTOR

Customer _____ Curve at 460 Volts HP 1.5&1 PHASE 3
 Model No 56T17D15912 60 HZ 1.5 HP VOLTS 230/460&190/380
 Catalog No K521A HZ 60&50 RPM 1725&1425



Torque in Lb.Ft

FL TORQUE	<u>4.5</u>	Lb.Ft	FL AMPS	<u>4.6/2.3</u>	
BD TORQUE	<u>26.2</u>	Lb.Ft	PU TORQUE	<u>17.1</u>	Lb.Ft
LR TORQUE	<u>20.75</u>	Lb.Ft	LR AMPS	<u>22.5</u>	
WINDING	SS0070074-3		Date	1/24/2019	