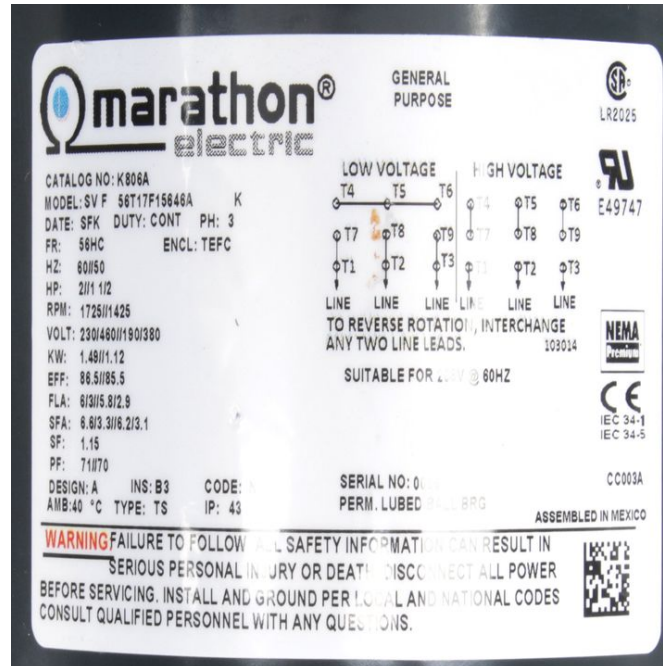


PRODUCT INFORMATION PACKET

Model No: 056T17F15646

Catalog No: K806A

2 HP General Purpose Motor, 3 phase, 1800 RPM, 230/460 V, 56HC Frame, TEFC
Three Phase TEFC Motors



Regal and Marathon are trademarks of Regal Beloit Corporation or one of its affiliated companies.

©2020 Regal Beloit Corporation, All Rights Reserved. MC017097E

REGAL



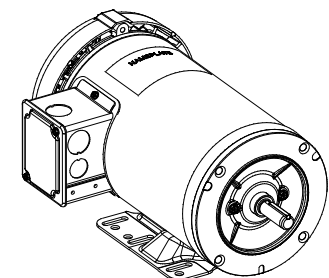
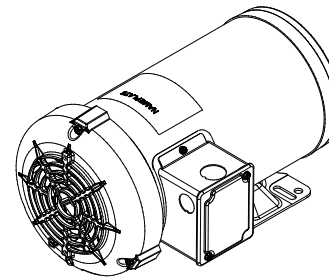
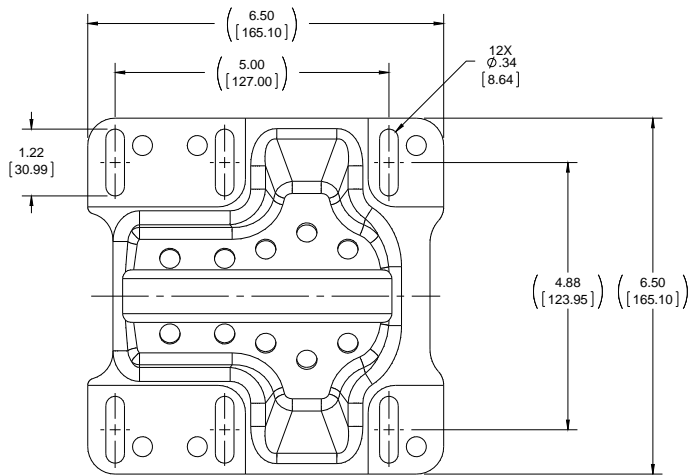
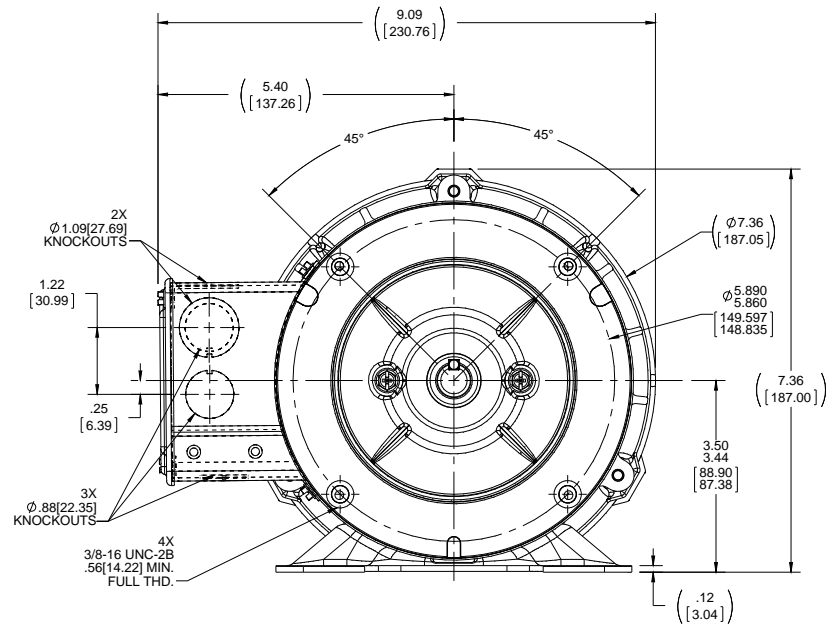
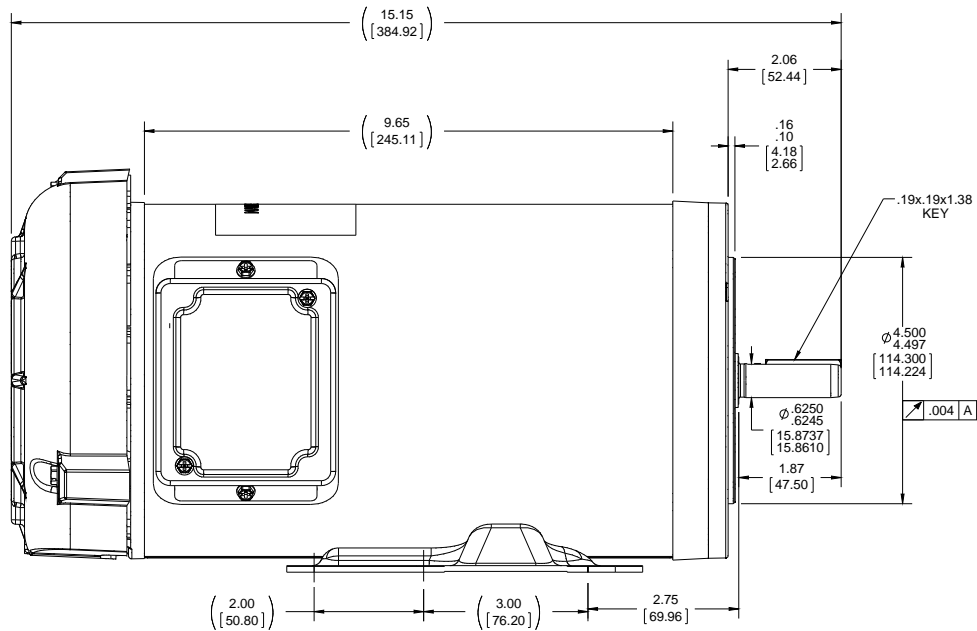
Nameplate Specifications

Output HP	2 Hp	Output KW	1.5 kW
Frequency	60 Hz	Voltage	230/460 V
Current	6.0/3.0 A	Speed	1725 rpm
Service Factor	1.15	Phase	3
Efficiency	86.5 %	Power Factor	71
Duty	Continuous	Insulation Class	B
Design Code	A	KVA Code	N
Frame	56HC	Enclosure	Totally Enclosed Fan Cooled
Thermal Protection	No	Ambient Temperature	40 °C
Drive End Bearing Size	6205	Opp Drive End Bearing Size	6203
UL	Recognized	CSA	Y
CE	Y	IP Code	43

Technical Specifications

Electrical Type	Squirrel Cage Induction Run	Starting Method	Across The Line
Poles	4	Rotation	Reversible
Resistance Main	6.58 Ohms	Mounting	Rigid Base
Motor Orientation	Horizontal	Drive End Bearing	Ball
Opp Drive End Bearing	Ball	Frame Material	Rolled Steel
Shaft Type	NEMA 56	Overall Length	15.15 in
Frame Length	9.65 in	Shaft Diameter	0.625 in
Shaft Extension	2.06 in	Assembly/Box Mounting	F1 ONLY
Connection Drawing	CDTD127	Outline Drawing	OL56100019-001

This is an uncontrolled document once printed or downloaded and is subject to change without notice. Date Created:14/10/2020



DRAWING REVISION A	REVISION BY J.M.RAMIREZ	DATE 05-09-2016
ECO ECO-0097587	APPROVED BY J.M.RAMIREZ	DATE 05-09-2016

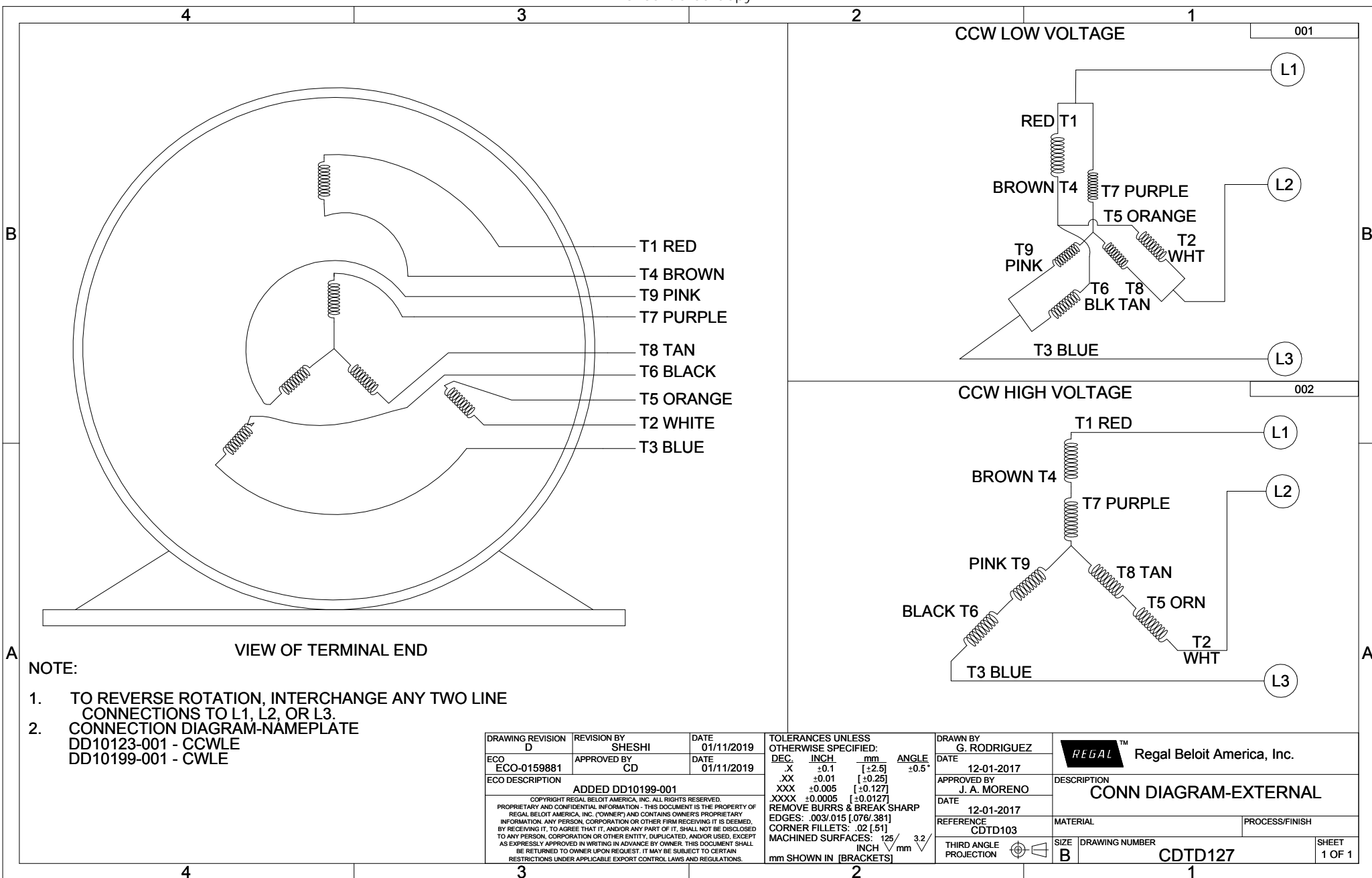
ECO DESCRIPTION
NEW

COPYRIGHT REGAL BELOIT AMERICA, INC. ALL RIGHTS RESERVED.
PROPRIETARY AND CONFIDENTIAL INFORMATION. THIS DOCUMENT IS THE PROPERTY OF REGAL BELOIT AMERICA, INC. (OWNER) AND CONTAINS OWNER'S PROPRIETARY INFORMATION. ANY PERSON, CORPORATION OR OTHER FIRM RECEIVING IT IS DEEMED, BY RECEIVING IT, TO AGREE THAT IT, AND/OR ANY PART OF IT, SHALL NOT BE DISCLOSED TO ANY PERSON, CORPORATION OR OTHER ENTITY, DUPLICATED, AND/OR USED, EXCEPT AS EXPRESSLY APPROVED IN WRITING IN ADVANCE BY OWNER. THIS DOCUMENT SHALL BE RETURNED TO OWNER UPON REQUEST. IT MAY BE SUBJECT TO CERTAIN RESTRICTIONS UNDER APPLICABLE EXPORT CONTROL LAWS AND REGULATIONS.

TOLERANCES UNLESS OTHERWISE SPECIFIED:		
DEC.	INCH	mm
.X	±0.1	[±2.5]
.XX	±0.02	[±0.51]
.XXX	±0.005	[±0.127]
.XXXX	±0.0005	[±0.0127]
REMOVE BURRS & BREAK SHARP EDGES: .0031 (0.0762) X 45°		
CORNER FILLETS: R.02 [51]		
MACHINED SURFACES: 1/25 √ 3.2		
mm SHOWN IN [BRACKETS]		

DRAWN BY F.RAMIREZ	DATE 03-29-2016
APPROVED BY	DATE
REFERENCE	THIRD ANGLE PROJECTION

Regal Beloit America, Inc.	
DESCRIPTION	OUTLINE
MATERIAL	56-140FR,TEFC, C'FACE, BASE RIGID
PROCESS/FINISH	
DRAWING NUMBER	OL56100019-001
SIZE	C
SHEET	1 OF 1



VIEW OF TERMINAL END

- NOTE:
1. TO REVERSE ROTATION, INTERCHANGE ANY TWO LINE CONNECTIONS TO L1, L2, OR L3.
 2. CONNECTION DIAGRAM-NAMEPLATE DD10123-001 - CCWLE DD10199-001 - CWLE

DRAWING REVISION D	REVISION BY SHESHI	DATE 01/11/2019	TOLERANCES UNLESS OTHERWISE SPECIFIED: DEC. INCH. mm ANGLE ±0.5°	DRAWN BY G. RODRIGUEZ	Regal Beloit America, Inc.	
ECO ECO-0159881	APPROVED BY CD	DATE 01/11/2019	.X ±0.1 [+2.5] .XX ±0.01 [+0.25] .XXX ±0.005 [+0.127] .XXXX ±0.0005 [+0.0127]	DATE 12-01-2017		
ECO DESCRIPTION ADDED DD10199-001			REMOVE BURRS & BREAK SHARP EDGES: .003/.015 [.076/.381] CORNER FILLETS: .02 [.51] MACHINED SURFACES: 125/3.2 mm SHOWN IN [BRACKETS]	APPROVED BY J. A. MORENO	DESCRIPTION CONN DIAGRAM-EXTERNAL	
COPYRIGHT REGAL BELOIT AMERICA, INC. ALL RIGHTS RESERVED. PROPRIETARY AND CONFIDENTIAL INFORMATION - THIS DOCUMENT IS THE PROPERTY OF REGAL BELOIT AMERICA, INC. (OWNER) AND CONTAINS OWNERS PROPRIETARY INFORMATION. ANY PERSON, CORPORATION OR OTHER FIRM RECEIVING IT IS DEEMED, BY RECEIVING IT, TO AGREE THAT IT, AND/OR ANY PART OF IT, SHALL NOT BE DISCLOSED TO ANY PERSON, CORPORATION OR OTHER ENTITY, DUPLICATED, AND/OR USED, EXCEPT AS EXPRESSLY APPROVED IN WRITING IN ADVANCE BY OWNER. THIS DOCUMENT SHALL BE RETURNED TO OWNER UPON REQUEST. IT MAY BE SUBJECT TO CERTAIN RESTRICTIONS UNDER APPLICABLE EXPORT CONTROL LAWS AND REGULATIONS.			DATE 12-01-2017 REFERENCE CDTD103	MATERIAL	PROCESS/FINISH	
			THIRD ANGLE PROJECTION	SIZE B	DRAWING NUMBER CDTD127	SHEET 1 OF 1



P.O. BOX 8003
WAUSAU, WI 54401-8003
PH. 715-675-3311

CERTIFICATION DATA SHEET

CUSTOMER PO#:
CUSTOMER PART #:
MODEL #: 56T17F15646 A
CUSTOMER PART #:
MOUNTING: F1 ONLY

CUSTOMER:
ORDER #:
CONN. DIAGRAM: CDDTD127
OUTLINE: OL56100019-001
WINDING #: ZT4255 FR 3

TYPICAL MOTOR PERFORMANCE DATA

HP	KW	SYNC. RPM	F.L. RPM	FRAME	ENCLOSURE	KVA CODE	DESIGN
2&1 1/2	1.49&1.12	1800	1725&1425	56HC	TEFC	N	A

PH	Hz	VOLTS	AMPS	START TYPE	DUTY	INSL	S.F.	AMB°C
3	60/50	230/460&190/380	6/3&5.8/2.9	ACROSS THE LINE	CONTINUOUS	B3	1.15/1.15	40

FULL LOAD EFF:	86.5&85.5	3/4 LOAD EFF:	86.5	1/2 LOAD EFF:	85.5	GTD. EFF	ELEC. TYPE
FULL LOAD PF:	71&70	3/4 LOAD PF:	62	1/2 LOAD PF:	49	84	SQ CAGE IND RUN

F.L. TORQUE	LOCKED ROTOR AMPS	L.R. TORQUE	B.D. TORQUE	F.L. RISE°C
6 LB-FT	61 / 30.5	24.5 LB-FT	408 %	33.2 LB-FT 553 %

SOUND PRESSURE @ 3 FT.	SOUND POWER	ROTOR WK^2	MAX. WK^2	SAFE STALL TIME	STARTS / HOUR	APPROX. MOTOR WGT
62 DBA	72 DBA	0.14 LB-FT^2	12 LB-FT^2	15 SEC.	2	65 LBS.

***** SUPPLEMENTAL INFORMATION *****

DE BRACKET TYPE	ODE BRACKET TYPE	MOUNT TYPE	ORIENTATION	SEVERE DUTY	HAZARDOUS LOCATION	DRIP COVER	SCREENS	PAINT
C-FACE	BRAKE	RIGID	HORIZONTAL	FALSE	NONE	FALSE	NONE	GRAY - GE (POWDER)

BEARINGS		GREASE	SHAFT TYPE	SPECIAL DE	SPECIAL ODE	SHAFT MATERIAL	FRAME MATERIAL
DE	ODE						
BALL	BALL	POLYREX EM	STANDARD 56	NONE	NONE	AISI 1215 (MS1000)	ROLLED STEEL
6205	6203						

THERMO-PROTECTORS							
THERMOSTATS	PROTECTORS	WDG RTDS	BRG RTDS	THERMISTORS	CONTROL	SPACE HEATERS	VOLTS
NONE	NOT	NONE	NONE	NONE	FALSE	NONE	NONE

* **INVERTER TORQUE:** NONE
INV. HP SPEED RANGE: NONE

N **ENCODER:** NONE
 NONE NONE
 NONE NONE PPR

O **BRAKE:** PROVISIONS FOR KIT NONE
 NONE P/N NONE
 NONE NONE
 NONE FT-LB NONE V NONE HZ

S
 *

PREPARED BY: Dinesh

Suddula

DATE:

02/08/2019 04:40:05 AM

FORM 3531 REV.3 02/07/99

** Subject to change without notice.

Data Sheet

56T17F15646



Submital Data @ 460 V

Date: 12/14/2018

Customer: Attention: FAREEDA DUDEKULA

Submitted by:

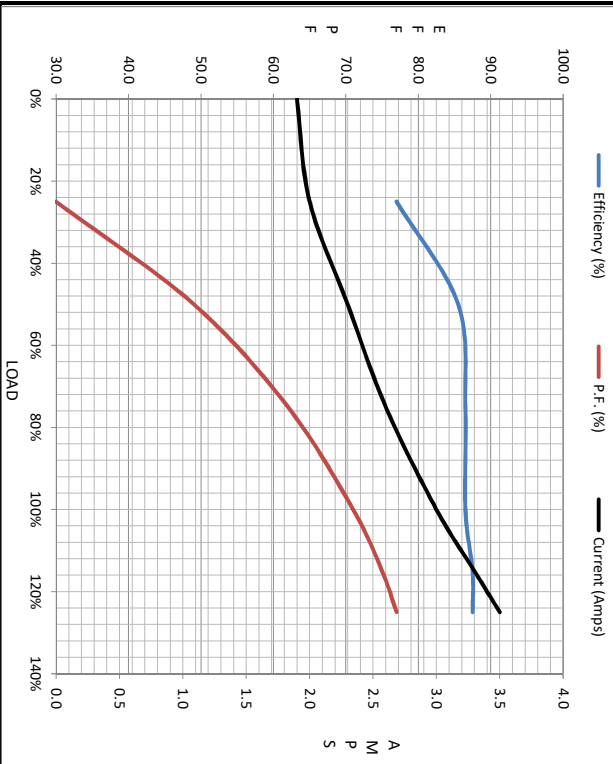
Load	0%	25%	50%	75%	100%	115%	125%	LR
Current (Amps)	1.30	2.00	2.30	2.60	3.0	3.3	3.5	30.5
Torque (ft-lb)	0.00	1.50	3.0	4.5	6.0	6.9	7.5	24.5
RPM	1800	1790	1780	1770	1760	1,755	1750	0
Efficiency (%)		77.0	85.5	86.5	86.5	87.5	87.5	
P.F. (%)	7.0	30.0	49.0	62.0	71.0	75.0	77.0	71.0

Motor Speed Data

	LR	Pull-Up	BD	Rated	Idle
Speed (RPM)	0	115	1200	1760	1800
Current (Amps)	30.5	29.5	19.5	3.0	1.90
Torque (ft-lb)	24.5	23.7	33.2	6.0	0.00

Information Block

HP	2.0
Sync. RPM	1800
Frame	56
Enclosure	TEFC
Construction	TS
Voltage	230/460#190/380 V
Frequency	60 Hz
Design	A
LR Code letter	N
Service Factor	1.15
Temp Rise @ FL	45 °C
Duty	CONT
Ambient	40 °C
Elevation	1,000 feet
Motor/Shaft wk ²	0.14 Lb-Ft ²
Ret Wdg	ZT4255 FR
Sound Pressure @ 1M	62 dBA
VFD Rating	NONE
Outline Dwg	OL56100019-001
Conn. Diag	CDT/D103
Additional Specifications:	
0	
0	
	EQUIV CKT (OHMS / PHASE)
	R1 R2 X1 X2 Km
	3.9620 3.0100 5.7510 5.9360 160.3460



Speed - Torque Curve

