

PRODUCT INFORMATION PACKET

Model No: 056T34D15593

Catalog No: G080A

0.75 HP General Purpose Motor, 3 phase, 3600 RPM, 230/460 V, 56 Frame, ODP
Three Phase ODP Motors





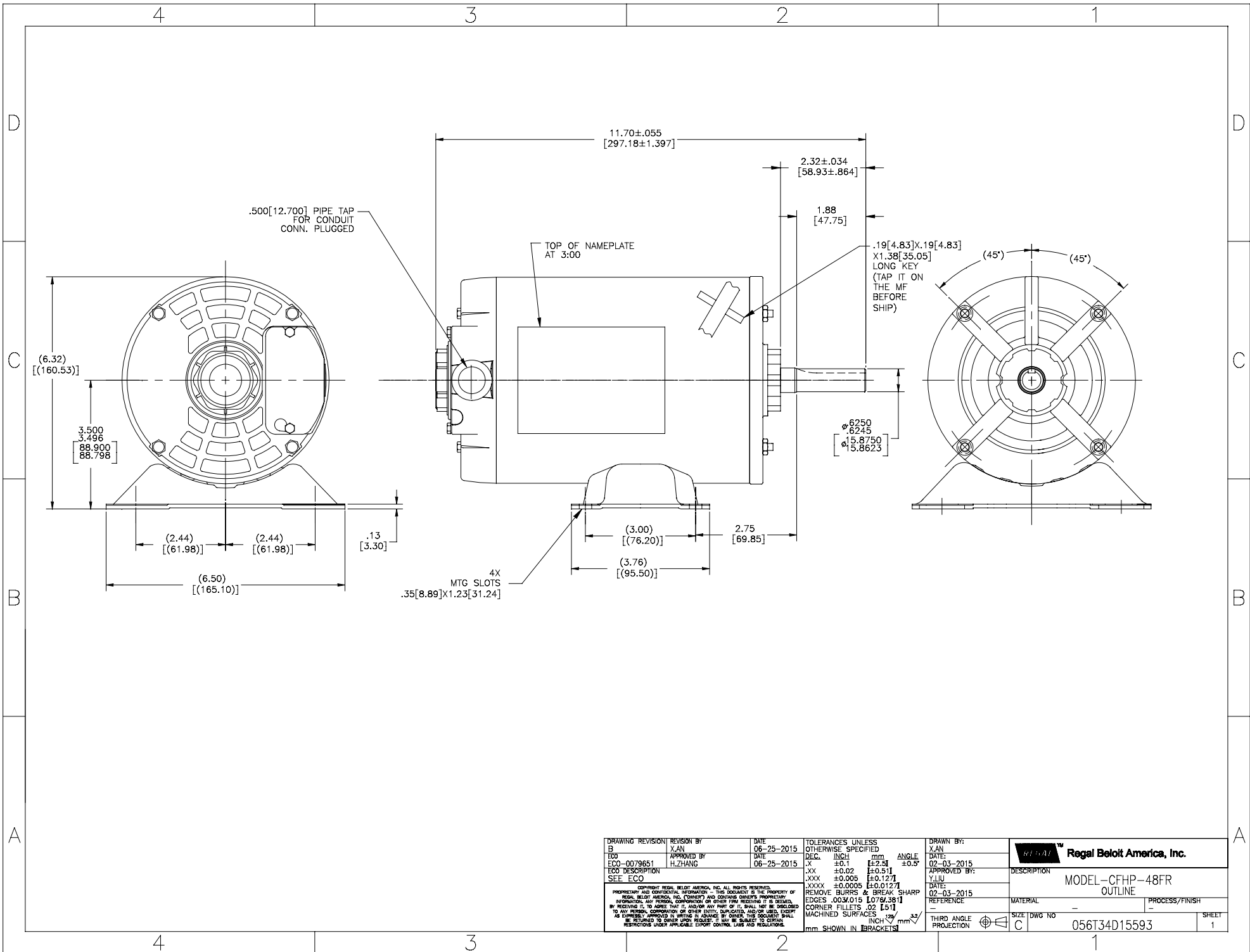
Nameplate Specifications

Output HP	0.75 Hp	Output KW	0.56 kW
Frequency	60 Hz	Voltage	230/460 V
Current	2.2/1.1 A	Speed	3450 rpm
Service Factor	1.25	Phase	3
Efficiency	76.8 %	Power Factor	80
Duty	Continuous	Insulation Class	B
Design Code	B	KVA Code	M
Frame	56	Enclosure	Drip Proof
Thermal Protection	No	Ambient Temperature	40 °C
Drive End Bearing Size	6203	Opp Drive End Bearing Size	6203
UL	Recognized	CSA	Y
CE	Y	IP Code	22

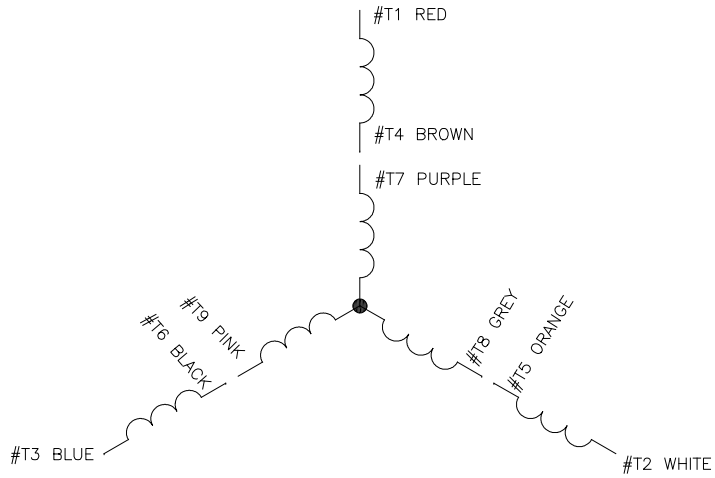
Technical Specifications

Electrical Type	Squirrel Cage Induction Run	Starting Method	Across The Line
Poles	2	Rotation	Reversible
Resistance Main	0 Ohms	Mounting	Rigid Base
Motor Orientation	Horizontal	Drive End Bearing	Ball
Opp Drive End Bearing	Ball	Frame Material	Rolled Steel
Shaft Type	NEMA 56	Overall Length	11.68 in
Frame Length	8.25 in	Shaft Diameter	0.625 in
Shaft Extension	1.88 in	Assembly/Box Mounting	F1 OUT ODE BRKT RADIAL
Connection Drawing	D0000561-001	Outline Drawing	056T34D15593-S01

This is an uncontrolled document once printed or downloaded and is subject to change without notice. Date Created:14/12/2020



DRAWING REVISION	REVISION BY	DATE	TOLERANCES UNLESS OTHERWISE SPECIFIED	DRAWN BY:	
B	XIAN	06-25-2015	DEC. INCH mm ANGLE	XIAN	
ECO	APPROVED BY	DATE	.XX ±0.1 [±2.5]	DATE:	02-03-2015
ECO-0079651	H.ZHANG	06-25-2015	.XX ±0.02 [±0.51]	APPROVED BY:	Y.LIU
ECO DESCRIPTION	SEE ECO		.XXX ±0.005 [±0.127]	DATE:	02-03-2015
			.XXXX ±0.0005 [±0.0127]	REFERENCE	
<small>COPYRIGHT REGAL BELOIT AMERICA, INC. ALL RIGHTS RESERVED. PROPRIETARY AND CONFIDENTIAL INFORMATION - THIS DOCUMENT IS THE PROPERTY OF REGAL BELOIT AMERICA, INC. (CONSEP) AND CONTAINS OWNERS PROPRIETARY INFORMATION. ANY REPRODUCTION, COPIATION OR OTHER USE WITHOUT THE WRITTEN PERMISSION OF REGAL BELOIT AMERICA, INC. IS STRICTLY PROHIBITED. BY RECEIVING IT, YOU AGREE THAT IT, AND/OR ANY PART OF IT, SHALL NOT BE DISCLOSED TO ANY PERSON, CORPORATION OR OTHER ENTITY, SUPPLIER, AND/OR USER, WITHOUT THE EXPRESS WRITTEN PERMISSION OF REGAL BELOIT AMERICA, INC. THIS DOCUMENT SHALL BE RETURNED TO OWNER UPON REQUEST. IT MAY BE SUBJECT TO CERTAIN RESTRICTIONS UNDER APPLICABLE EXPORT CONTROL LAWS AND REGULATIONS.</small>			REMOVE BURRS & BREAK SHARP EDGES .003/015 [0.076/3.81]	MATERIAL	
			CORNER FILLETS .02 [.51]	PROCESS/FINISH	
			MACHINED SURFACES	SIZE DWG NO	056T34D15593
			mm SHOWN IN BRACKETS	SHEET	1



CONNECT AS FOLLOWS

HIGH VOLTAGE

#T1 - RED - LINE A
 #T2 - WHITE - LINE B
 #T3 - BLUE - LINE C
 #T4 - BROWN → TIE TOGETHER
 #T7 - PURPLE → TIE TOGETHER
 #T5 - ORANGE → TIE TOGETHER
 #T8 - GREY → TIE TOGETHER
 #T6 - BLACK → TIE TOGETHER
 #T9 - PINK → TIE TOGETHER

LOW VOLTAGE

#T1 - RED → LINE A
 #T7 - PURPLE → LINE B
 #T2 - WHITE → LINE B
 #T8 - GREY → LINE C
 #T3 - BLUE → LINE C
 #T9 - PINK → LINE C
 #T5 - ORANGE → TIE TOGETHER
 #T6 - BLACK → TIE TOGETHER
 #T4 - BROWN → TIE TOGETHER

NOTES:

1. LEADS MAY BE MULTICOLORED AS SHOWN FOR GROUP -01 OR SINGLE COLOR FOR GROUP -02. IN EITHER CASE THE NUMBERING SEQUENCE WILL BE THE SAME.

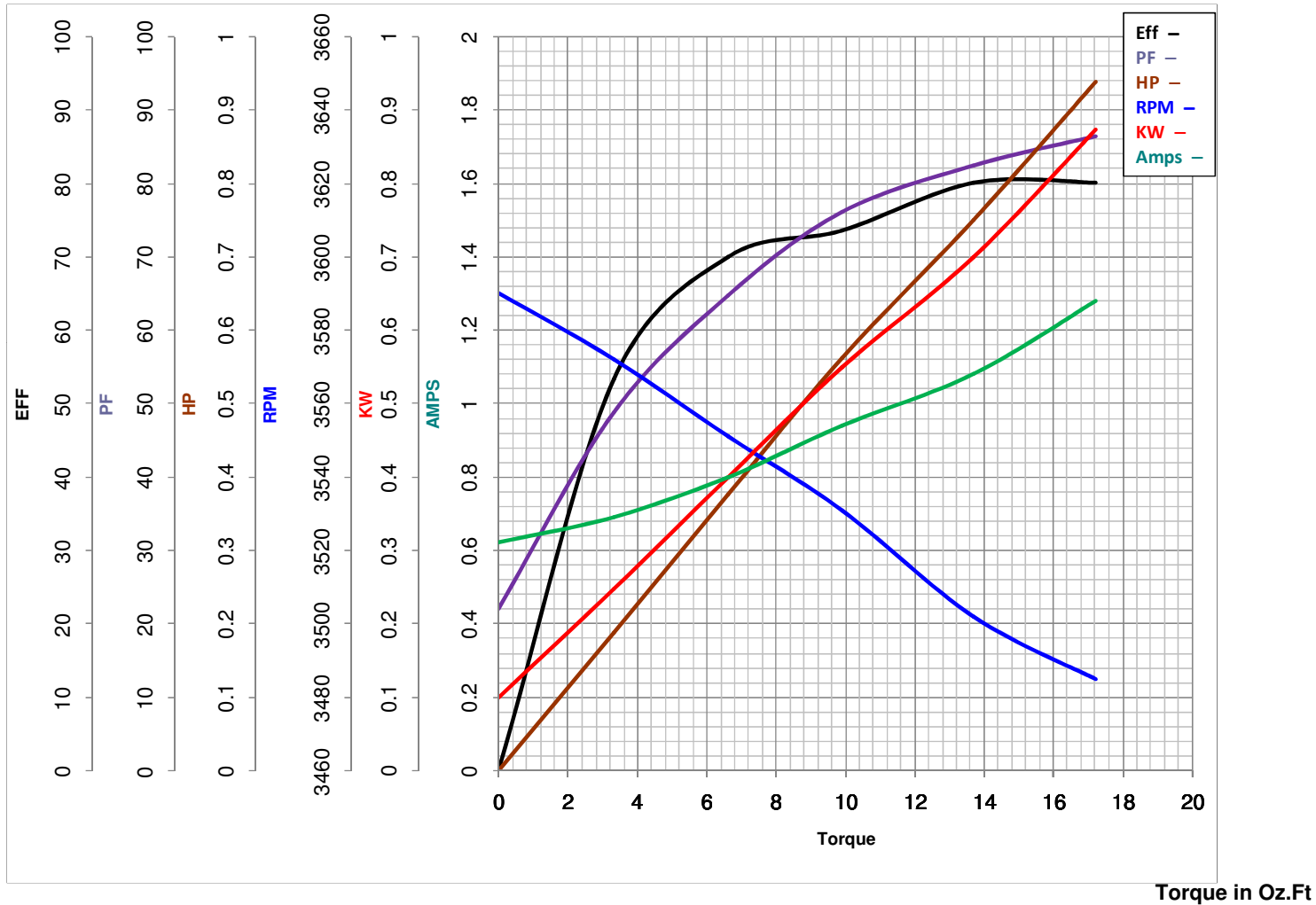
OPTIONAL CORD CONNECTION WHEN SPECIFIED IN BOM
 LINE A - WHITE
 LINE B - RED
 LINE C - BLACK

DRAWING REVISION	REVISION BY	DATE	TOLERANCES UNLESS OTHERWISE SPECIFIED	DRAWN BY:	Regal Beloit America, Inc.
A	H.ZHANG	12-11-2014	DEC. INCH mm ANGLE	H.ZHANG	
ECO	APPROVED BY	DATE	.X ±0.1 [±2.5] ±0.5°	DATE:	12-11-2014
ECO-0067205	J.ZHAN	12-11-2014	.XX ±0.02 [±0.51]	APPROVED BY:	J.ZHAN
NEW			.XXX ±0.005 [±0.127]	DATE:	12-11-2014
COPYRIGHT REGAL BELOIT AMERICA, INC. ALL RIGHTS RESERVED. PROPRIETARY AND CONFIDENTIAL INFORMATION - THIS DOCUMENT IS THE PROPERTY OF REGAL BELOIT AMERICA, INC. ("OWNER") AND CONTAINS OWNER'S PROPRIETARY INFORMATION. ANY REPRODUCTION OR OTHER USE WITHOUT THE WRITTEN PERMISSION OF REGAL BELOIT AMERICA, INC. IS STRICTLY PROHIBITED. BY RECEIVING IT, TO AGREE THAT IT, AND/OR ANY PART OF IT, SHALL NOT BE DISCLOSED TO ANY PERSON, CORPORATION OR OTHER ENTITY, SUPPLIER, AND/OR USER EXCEPT AS EXPRESSLY APPROVED IN WRITING BY OWNER. THIS DOCUMENT SHALL BE RETURNED TO OWNER UPON REQUEST. IT MAY BE SUBJECT TO CERTAIN RESTRICTIONS UNDER APPLICABLE EXPORT CONTROL LAWS AND REGULATIONS.			REMOVE BURRS & BREAK SHARP EDGES .003/.015 [076/.381] CORNER FILLETS .02 [.51] MACHINED SURFACES INCH mm THIRD ANGLE PROJECTION	REFERENCE MATERIAL PROCESS/FINISH	DESCRIPTION CONN DIAGRAM-EXTERNAL
			mm SHOWN IN BRACKETS	SIZE DWG NO C D0000561-001	SHEET 1



MARATHON ELECTRIC CORPORATION
TYPICAL PERFORMANCE CURVE for AC MOTOR

Customer _____ Curve at 460 Volts HP 0.75&0.5 PHASE 3
 Model No 56T34D15593 60 HZ
0.75 HP VOLTS 230/460&190/380
 Catalog No G080A HZ 60&50 RPM 3450&2850



FL TORQUE	<u>13.7</u>	Oz.Ft	FL AMPS	<u>2.2/1.1</u>	
BD TORQUE	<u>94.7</u>	Oz.Ft	PU TORQUE	<u>71.9</u>	Oz.Ft
LR TORQUE	<u>76.1</u>	Oz.Ft	LR AMPS	<u>10.7</u>	
WINDING	<u>2523053001-</u>		Date	<u>3/12/2019</u>	