

PRODUCT INFORMATION PACKET

Model No: 056T34D15594

Catalog No: G205A

0.75 HP General Purpose Motor, 3 phase, 3600 RPM, 230/460 V, 56C Frame, ODP
Three Phase ODP Motors



Regal and Marathon are trademarks of Regal Beloit Corporation or one of its affiliated companies.
©2020 Regal Beloit Corporation, All Rights Reserved. MC017097E

REGAL

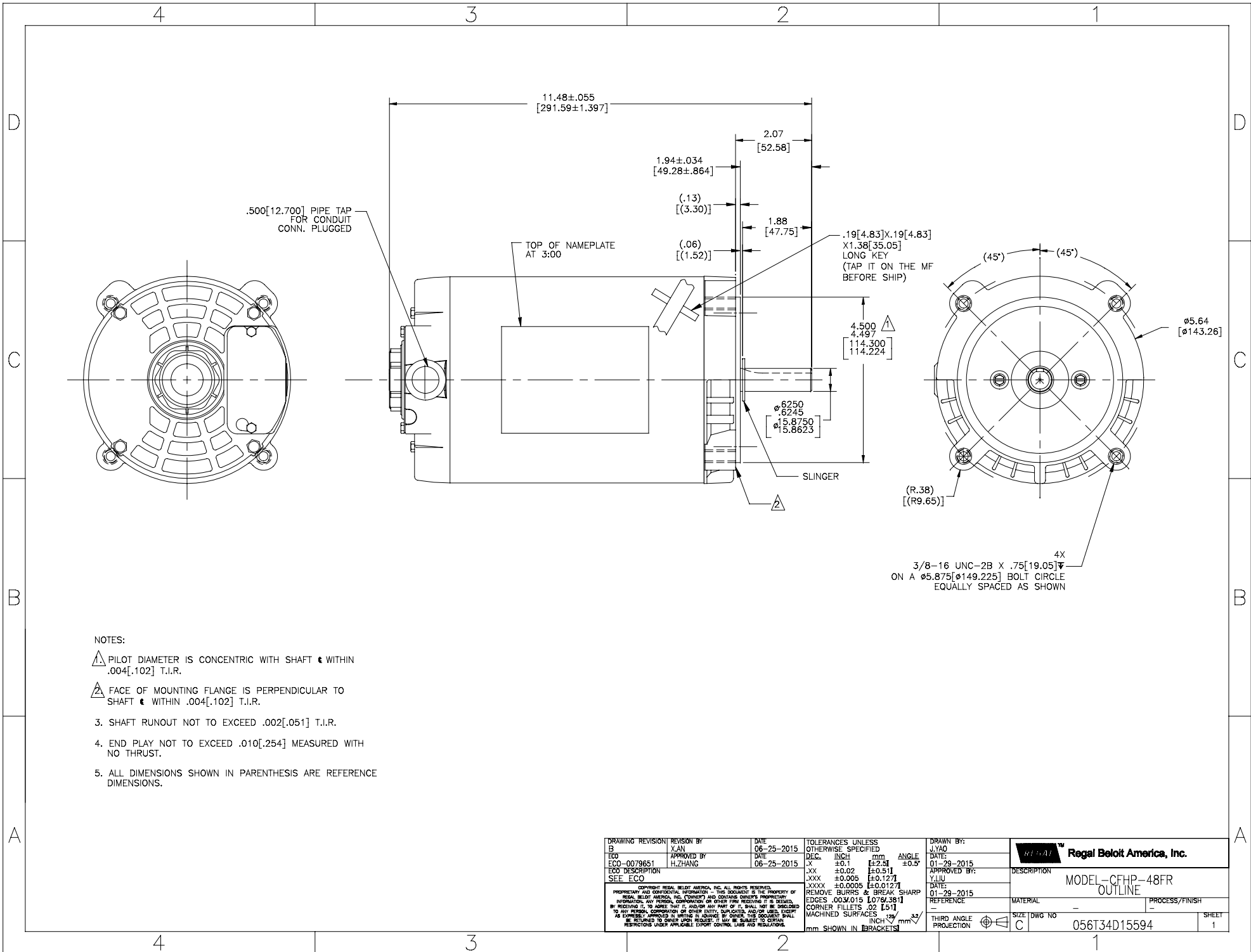
Nameplate Specifications

Output HP	0.75 Hp	Output KW	0.56 kW
Frequency	60 Hz	Voltage	230/460 V
Current	2.2/1.1 A	Speed	3450 rpm
Service Factor	1.25	Phase	3
Efficiency	76.8 %	Power Factor	82.4
Duty	Continuous	Insulation Class	B
Design Code	B	KVA Code	N
Frame	56C	Enclosure	Drip Proof
Thermal Protection	No	Ambient Temperature	40 °C
Drive End Bearing Size	6203	Opp Drive End Bearing Size	6203
UL	Recognized	CSA	Y
CE	Y	IP Code	22

Technical Specifications

Electrical Type	Squirrel Cage Induction Run	Starting Method	Across The Line
Poles	2	Rotation	Reversible
Resistance Main	0 Ohms	Mounting	Round
Motor Orientation	Horizontal	Drive End Bearing	Ball
Opp Drive End Bearing	Ball	Frame Material	Rolled Steel
Shaft Type	NEMA 56	Overall Length	11.50 in
Frame Length	8.25 in	Shaft Diameter	0.625 in
Shaft Extension	1.88 in	Assembly/Box Mounting	F1 OUT ODE BRKT RADIAL
Outline Drawing	056T34D15594-S01	Connection Drawing	D0000561-001

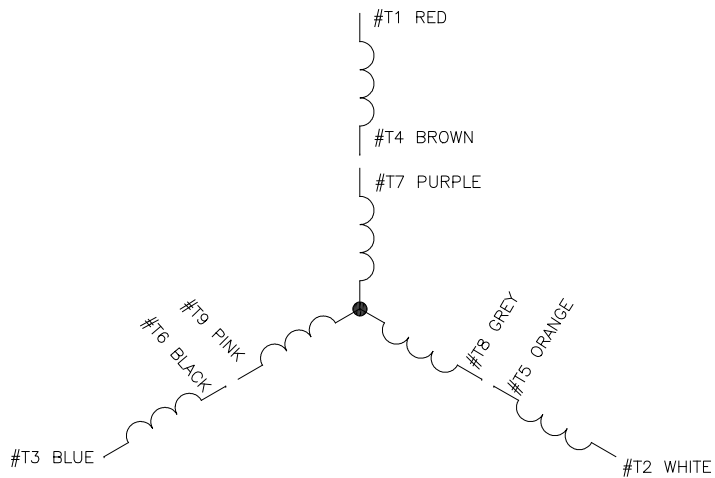
This is an uncontrolled document once printed or downloaded and is subject to change without notice. Date Created:14/12/2020



NOTES:

- 1. Δ PILOT DIAMETER IS CONCENTRIC WITH SHAFT & WITHIN .004[.102] T.I.R.
- 2. Δ FACE OF MOUNTING FLANGE IS PERPENDICULAR TO SHAFT & WITHIN .004[.102] T.I.R.
- 3. SHAFT RUNOUT NOT TO EXCEED .002[.051] T.I.R.
- 4. END PLAY NOT TO EXCEED .010[.254] MEASURED WITH NO THRUST.
- 5. ALL DIMENSIONS SHOWN IN PARENTHESIS ARE REFERENCE DIMENSIONS.

DRAWING REVISION BY B X.AN	DATE 06-25-2015	TOLERANCES UNLESS OTHERWISE SPECIFIED DEC. INCH mm ANGLE XX ±0.1 [±2.5] ±0.5° JXX ±0.02 [±0.51] XXX ±0.005 [±0.127] XXXX ±0.0005 [±0.0127]	DRAWN BY: J.YAO	
ECO-0079651 APPROVED BY H.ZHANG	DATE 06-25-2015	REMOVE BURRS & BREAK SHARP EDGES .003[.015] [0.76[.38]] CORNER FILLETS .02 [51] MACHINED SURFACES INCH mm mm SHOWN IN BRACKETS	DATE: 01-29-2015	
ECO DESCRIPTION SEE ECO			APPROVED BY: Y.LIU	DESCRIPTION MODEL-CFHP-48FR OUTLINE
			DATE: 01-29-2015	MATERIAL
			REFERENCE	PROCESS/FINISH
			THIRD ANGLE PROJECTION	SIZE DWG NO C 056734D15594
				SHEET 1



CONNECT AS FOLLOWS

HIGH VOLTAGE	
#T1 - RED	LINE A
#T2 - WHITE	LINE B
#T3 - BLUE	LINE C
#T4 - BROWN	TIE TOGETHER
#T7 - PURPLE	TIE TOGETHER
#T5 - ORANGE	TIE TOGETHER
#T8 - GREY	TIE TOGETHER
#T6 - BLACK	TIE TOGETHER
#T9 - PINK	TIE TOGETHER

LOW VOLTAGE	
#T1 - RED	LINE A
#T7 - PURPLE	LINE B
#T2 - WHITE	LINE B
#T8 - GREY	LINE C
#T3 - BLUE	LINE C
#T9 - PINK	TIE TOGETHER
#T5 - ORANGE	TIE TOGETHER
#T6 - BLACK	TIE TOGETHER
#T4 - BROWN	TIE TOGETHER

NOTES:

- LEADS MAY BE MULTICOLORED AS SHOWN FOR GROUP -01 OR SINGLE COLOR FOR GROUP -02. IN EITHER CASE THE NUMBERING SEQUENCE WILL BE THE SAME.

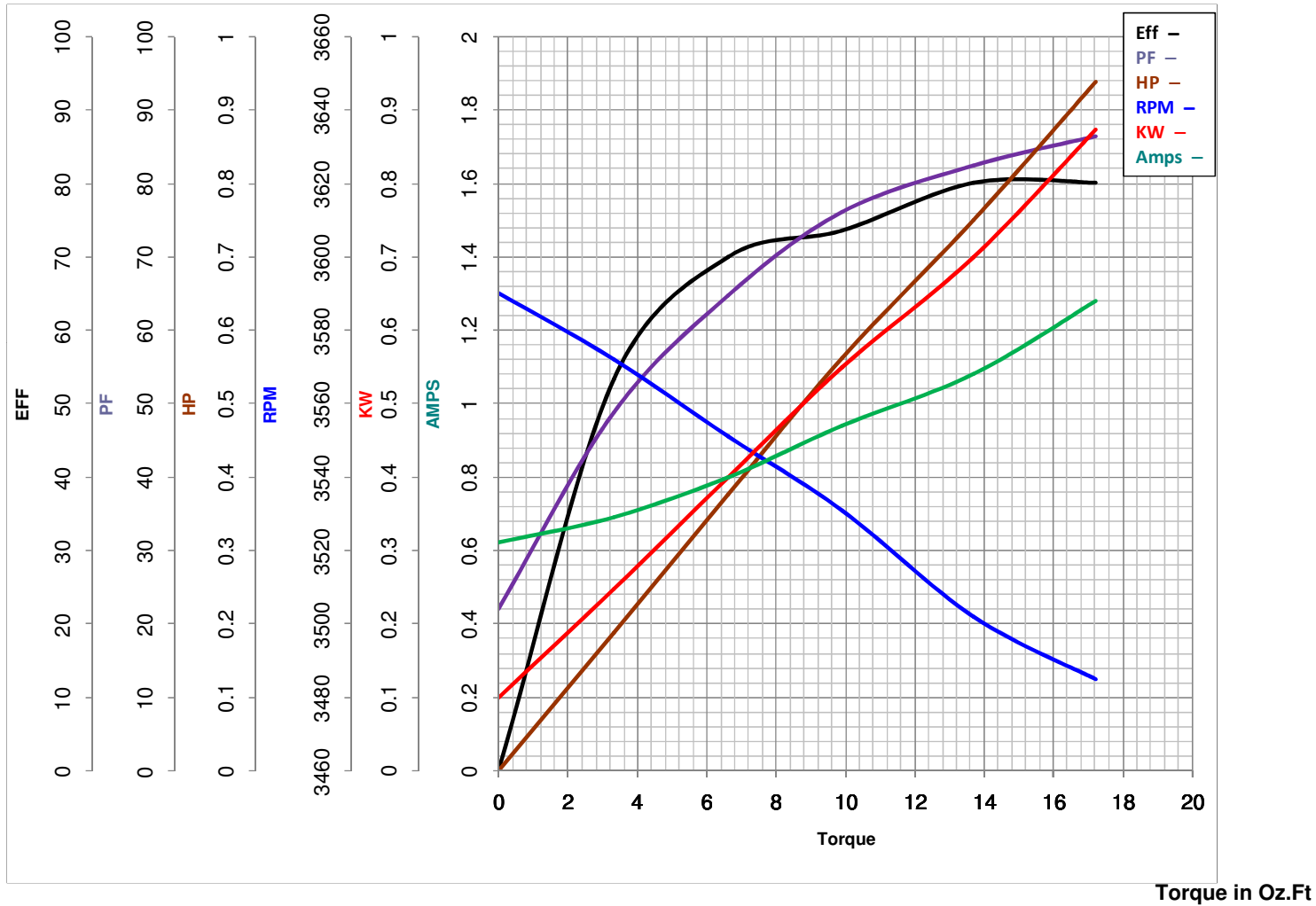
OPTIONAL CORD CONNECTION
WHEN SPECIFIED IN BOM
LINE A WHITE
LINE B RED
LINE C BLACK

DRAWING REVISION A	REVISION BY H.ZHANG	DATE 12-11-2014	TOLERANCES UNLESS OTHERWISE SPECIFIED DEC. INCH mm ANGLE X ±0.1 [±2.5] ±0.5° XX ±0.02 [±0.51] .XXX ±0.005 [±0.127] XXXX ±0.0005 [±0.0127]	DRAWN BY: H.ZHANG	Regal Beloit America, Inc.
ECD-0067205	APPROVED BY J.ZHAN	DATE 12-11-2014	REMOVE BURRS & BREAK SHARP EDGES .003/.015 [076/.381] CORNER FILLETS .02 [.51] MACHINED SURFACES INCH mm THIRD ANGLE PROJECTION	DATE: 12-11-2014	DESCRIPTION CONN DIAGRAM-EXTERNAL
NEW	COPYRIGHT REGAL BELOIT AMERICA, INC. ALL RIGHTS RESERVED. PROPRIETARY AND CONFIDENTIAL INFORMATION - THIS DOCUMENT IS THE PROPERTY OF REGAL BELOIT AMERICA, INC. (OWNER) AND CONTAINS OWNER'S PROPRIETARY INFORMATION. ANY REPRODUCTION OR OTHER FIRM RECEIVING IT IS DENIED. BY RECEIVING IT, TO AGREE THAT IT, AND/OR ANY PART OF IT, SHALL NOT BE DISCLOSED TO ANY PERSON, CORPORATION OR OTHER ENTITY, SUPPLIER, AND/OR USER EXCEPT AS EXPRESSLY APPROVED IN WRITING BY AGENCY BY OWNER. THIS DOCUMENT SHALL BE RETURNED TO OWNER UPON REQUEST. IT MAY BE SUBJECT TO CERTAIN RESTRICTIONS UNDER APPLICABLE EXPORT CONTROL LAWS AND REGULATIONS.		APPROVED BY: J.ZHAN	DATE: 12-11-2014	MATERIAL
			REFERENCE	PROCESS/FINISH	SIZE DWG NO D0000561-001
			mm SHOWN IN BRACKETS		SHEET 1



MARATHON ELECTRIC CORPORATION
TYPICAL PERFORMANCE CURVE for AC MOTOR

Customer _____ Curve at 460 Volts HP 0.75&0.5 PHASE 3
 Model No 56T34D15594 60 HZ
0.75 HP VOLTS 230/460&190/380
 Catalog No G205A HZ 60&50 RPM 3450&2850



FL TORQUE	<u>13.7</u>	Oz.Ft	FL AMPS	<u>2.2/1.1</u>	
BD TORQUE	<u>94.7</u>	Oz.Ft	PU TORQUE	<u>71.9</u>	Oz.Ft
LR TORQUE	<u>76.1</u>	Oz.Ft	LR AMPS	<u>10.7</u>	
WINDING	<u>2523053001-</u>		Date	<u>3/12/2019</u>	