

PRODUCT INFORMATION PACKET

Model No: 056T34D15601

Catalog No: K690A

1.50 HP General Purpose Motor, 3 phase, 3600 RPM, 230/460 V, 56C Frame, ODP
Three Phase ODP Motors



Regal and Marathon are trademarks of Regal Beloit Corporation or one of its affiliated companies.

©2020 Regal Beloit Corporation, All Rights Reserved. MC017097E

REGAL

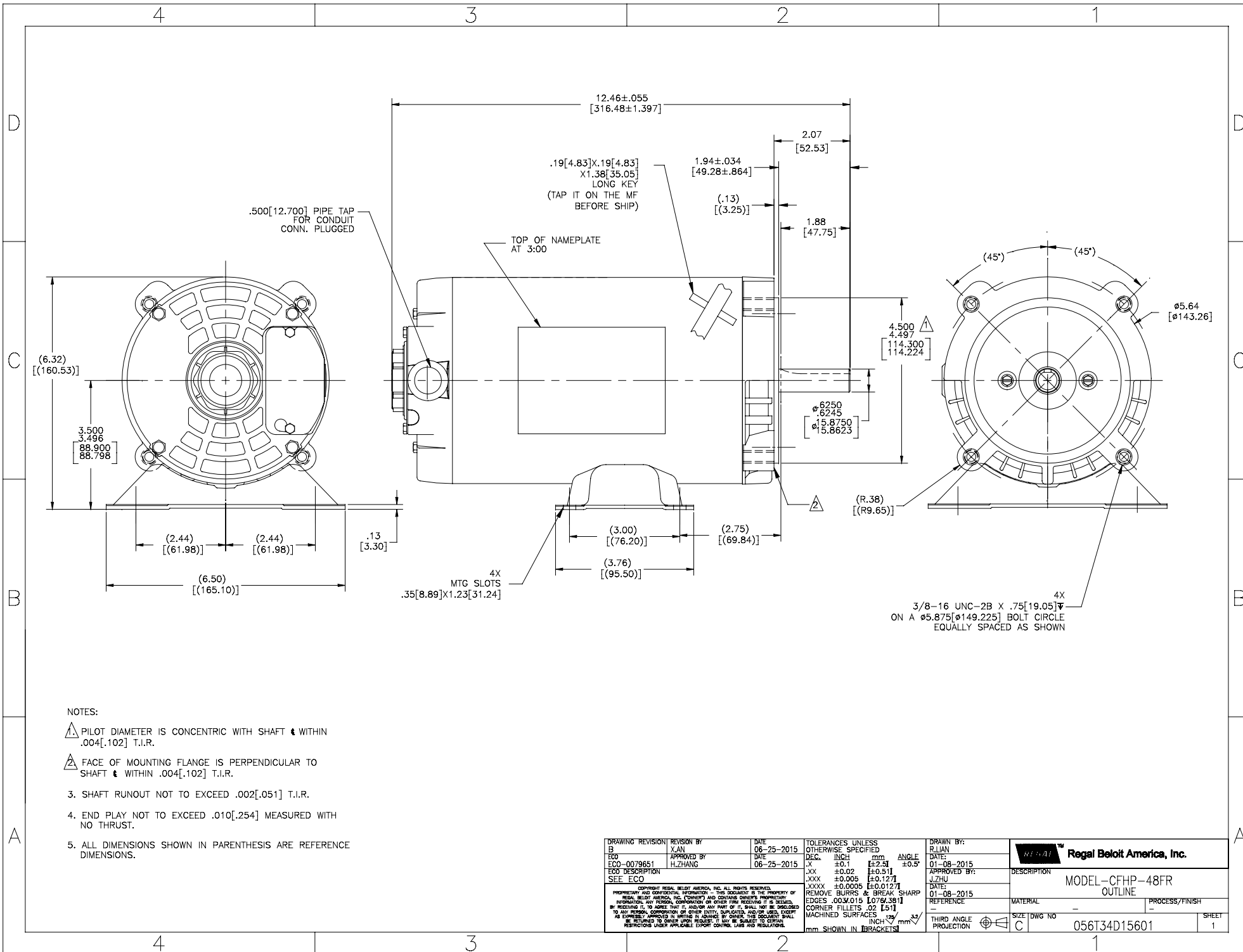
Nameplate Specifications

| | | | |
|------------------------|------------|----------------------------|------------|
| Output HP | 1.50 Hp | Output KW | 1.1 kW |
| Frequency | 60 Hz | Voltage | 230/460 V |
| Current | 4.2/2.1 A | Speed | 3450 rpm |
| Service Factor | 1.15 | Phase | 3 |
| Efficiency | 84 % | Power Factor | 84.2 |
| Duty | Continuous | Insulation Class | B |
| Design Code | B | KVA Code | M |
| Frame | 56C | Enclosure | Drip Proof |
| Thermal Protection | No | Ambient Temperature | 40 °C |
| Drive End Bearing Size | 6203 | Opp Drive End Bearing Size | 6203 |
| UL | Recognized | CSA | Y |
| CE | Y | IP Code | 22 |

Technical Specifications

| | | | |
|-----------------------|-----------------------------|-----------------------|------------------------|
| Electrical Type | Squirrel Cage Induction Run | Starting Method | Across The Line |
| Poles | 2 | Rotation | Reversible |
| Resistance Main | 0 Ohms | Mounting | Rigid Base |
| Motor Orientation | Horizontal | Drive End Bearing | Ball |
| Opp Drive End Bearing | Ball | Frame Material | Rolled Steel |
| Shaft Type | T | Overall Length | 12.43 in |
| Frame Length | 8.25 in | Shaft Diameter | 0.625 in |
| Shaft Extension | 1.88 in | Assembly/Box Mounting | F1 OUT ODE BRKT RADIAL |
| Connection Drawing | D0000561-001 | Outline Drawing | 056T34D15601-S01 |

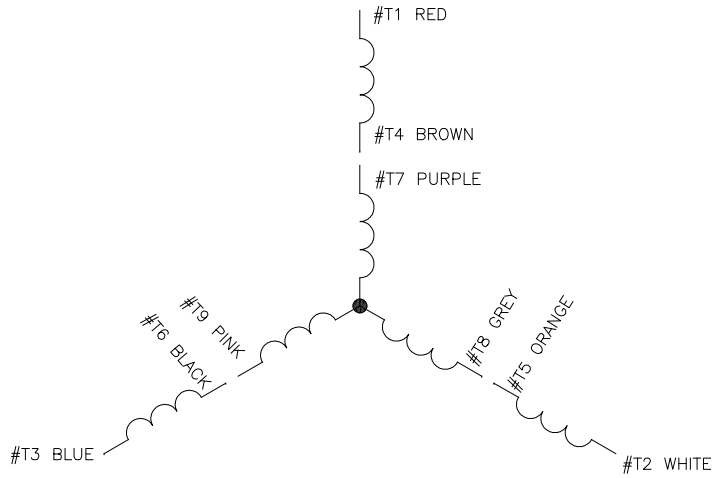
This is an uncontrolled document once printed or downloaded and is subject to change without notice. Date Created:14/12/2020



NOTES:

- ▲ PILOT DIAMETER IS CONCENTRIC WITH SHAFT & WITHIN .004[.102] T.I.R.
- ▲ FACE OF MOUNTING FLANGE IS PERPENDICULAR TO SHAFT & WITHIN .004[.102] T.I.R.
- 3. SHAFT RUNOUT NOT TO EXCEED .002[.051] T.I.R.
- 4. END PLAY NOT TO EXCEED .010[.254] MEASURED WITH NO THRUST.
- 5. ALL DIMENSIONS SHOWN IN PARENTHESIS ARE REFERENCE DIMENSIONS.

| | | | |
|--|------------------------|--|------------------------|
| DRAWING REVISION BY B X.AN | DATE 06-25-2015 | TOLERANCES UNLESS OTHERWISE SPECIFIED | DRAWN BY: R.LIAN |
| ECO ECO-0079651 | APPROVED BY H.ZHANG | DEC. INCH mm ANGLE X ±0.1 [±2.5] ±0.5° JXX ±0.02 [±0.51] .XXX ±0.005 [±0.127] JXXX ±0.0005 [±0.0127] | DATE: 01-08-2015 |
| SEE ECO | | REMOVE BURRS & BREAK SHARP EDGES .003[.015] [0.78[.38]] CORNER FILLETS .02 [51] MACHINED SURFACES | APPROVED BY: J.ZHU |
| <small> COPYRIGHT REGAL BELOIT AMERICA, INC. ALL RIGHTS RESERVED. PROPRIETARY AND CONFIDENTIAL INFORMATION - THIS DOCUMENT IS THE PROPERTY OF REGAL BELOIT AMERICA, INC. (OWNER) AND CONTAINS OWNER'S PROPRIETARY INFORMATION. ANY REPRODUCTION, COPIATION OR OTHER USE WITHOUT THE WRITTEN PERMISSION OF REGAL BELOIT AMERICA, INC. IS STRICTLY PROHIBITED. BY RECEIVING IT, YOU AGREE THAT IT, AND/OR ANY PART OF IT, SHALL NOT BE DISCLOSED TO ANY PERSON, CORPORATION OR OTHER ENTITY, SUPPLIER, AND/OR USER WITHOUT THE EXPRESS WRITTEN PERMISSION OF REGAL BELOIT AMERICA, INC. THIS DOCUMENT SHALL BE RETURNED TO OWNER UPON REQUEST. IT MAY BE SUBJECT TO CERTAIN RESTRICTIONS UNDER APPLICABLE EXPORT CONTROL LAWS AND REGULATIONS. </small> | | | DATE: 01-08-2015 |
| | | mm SHOWN IN BRACKETS | REFERENCE |
| | | | MATERIAL |
| | | | PROCESS/FINISH |
| | | | THIRD ANGLE PROJECTION |
| | | | SIZE DWG NO |
| | | | 056T34D15601 |
| | | | SHEET |
| | | | 1 |



CONNECT AS FOLLOWS

| HIGH VOLTAGE | |
|--------------|----------------|
| #T1 - RED | — LINE A |
| #T2 - WHITE | — LINE B |
| #T3 - BLUE | — LINE C |
| #T4 - BROWN | — TIE TOGETHER |
| #T7 - PURPLE | — TIE TOGETHER |
| #T5 - ORANGE | — TIE TOGETHER |
| #T8 - GREY | — TIE TOGETHER |
| #T6 - BLACK | — TIE TOGETHER |
| #T9 - PINK | — TIE TOGETHER |

| LOW VOLTAGE | |
|--------------|----------------|
| #T1 - RED | — LINE A |
| #T7 - PURPLE | — LINE B |
| #T2 - WHITE | — LINE B |
| #T8 - GREY | — LINE C |
| #T3 - BLUE | — LINE C |
| #T9 - PINK | — TIE TOGETHER |
| #T5 - ORANGE | — TIE TOGETHER |
| #T6 - BLACK | — TIE TOGETHER |
| #T4 - BROWN | — TIE TOGETHER |

NOTES:

- LEADS MAY BE MULTICOLORED AS SHOWN FOR GROUP -01 OR SINGLE COLOR FOR GROUP -02. IN EITHER CASE THE NUMBERING SEQUENCE WILL BE THE SAME.

OPTIONAL CORD CONNECTION WHEN SPECIFIED IN BOM
 LINE A — WHITE
 LINE B — RED
 LINE C — BLACK

| | | | | | | |
|--|--|--------------------|--|----------------------|---------------------|--|
| DRAWING REVISION A | REVISION BY H.ZHANG | DATE 12-11-2014 | TOLERANCES UNLESS OTHERWISE SPECIFIED DEC. INCH mm ANGLE X ±0.1 [±2.5] ±0.5° XX ±0.02 [±0.51] .XXX ±0.005 [±0.127] XXXX ±0.0005 [±0.0127] | DRAWN BY: H.ZHANG | DATE: 12-11-2014 | Regal Beloit America, Inc. DESCRIPTION CONN DIAGRAM-EXTERNAL |
| ECO-0067205 | APPROVED BY J.ZHAN | DATE 12-11-2014 | APPROVED BY: J.ZHAN | DATE: 12-11-2014 | MATERIAL | |
| ECO DESCRIPTION NEW | COPYRIGHT REGAL BELOIT AMERICA, INC. ALL RIGHTS RESERVED. PROPRIETARY AND CONFIDENTIAL INFORMATION - THIS DOCUMENT IS THE PROPERTY OF REGAL BELOIT AMERICA, INC. ("OWNER") AND CONTAINS OWNER'S PROPRIETARY INFORMATION. ANY REPRODUCTION OR OTHER FIRM RECEIVING IT IS DENIED. BY RECEIVING IT, TO AGREE THAT IT, AND/OR ANY PART OF IT, SHALL NOT BE DISCLOSED TO ANY PERSON, CORPORATION OR OTHER ENTITY, SUPPLIER, AND/OR USER EXCEPT AS EXPRESSLY APPROVED IN WRITING BY OWNER. THIS DOCUMENT SHALL BE RETURNED TO OWNER UPON REQUEST. IT MAY BE SUBJECT TO CERTAIN RESTRICTIONS UNDER APPLICABLE EXPORT CONTROL LAWS AND REGULATIONS. | | | REFERENCE | PROCESS/FINISH | |
| CORNER FILLETS .02 [.51] MACHINED SURFACES INCH mm mm SHOWN IN BRACKETS | | | THIRD ANGLE PROJECTION | SIZE DWG NO C | D0000561-001 | |



**P.O. BOX 8003
WAUSAU, WI 54401-8003
PH. 715-675-3311**

CERTIFICATION DATA SHEET

CUSTOMER:
ORDER #:
CONN. DIAGRAM:
OUTLINE:
WINDING #:

CUSTOMER PO #:
MODEL #:
CUSTOMER PART #:
MOUNTING:

TYPICAL MOTOR PERFORMANCE DATA

| HP | KW | SYNC. RPM | F.L. RPM | FRAME | ENCLOSURE | KVA CODE | DESIGN |
|---------|-----------|-----------|-----------|-------|-----------|----------|--------|
| 1 1/2&1 | 1.12&0.75 | 3600 | 3450&2850 | 56C | DP | M | B |

| PH | HZ | VOLTS | AMPS | START TYPE | DUTY | INSL | S.F. | AMB°C |
|----|-------|-----------------|-------------------|-----------------|------------|------|-----------|-------|
| 3 | 60/50 | 230/460&190/380 | 4.2/2.1&3.40/1.70 | ACROSS THE LINE | CONTINUOUS | B3 | 1.15/1.15 | 40 |

| F.L. TORQUE | LOCKED ROTOR AMPS | L.R. TORQUE | B.D. TORQUE | F.L. RISE°C |
|-------------|-------------------|-------------|-------------|-------------|
| 36 lb-ft | 40.2 / 20.1 | 139 lb-ft | 174 lb-ft | - |

| SOUND PRESSURE @ 3 FT. | SOUND POWER | ROTOR WK^2 | MAX. WK^2 | SAFE STALL TIME | STARTS / HOUR | APPROX. MOTOR WGT |
|------------------------|-------------|------------|-----------|-----------------|---------------|-------------------|
| 0 dba | 10 dba | 0 lb-ft^2 | 0 lb-ft^2 | 0 SEC. | 0 | 26 LBS. |

***** SUPPLEMENTAL INFORMATION *****

| DE BRACKET TYPE | ODE BRACKET TYPE | MOUNT TYPE | ORIENTATION | SEVERE DUTY | HAZARDOUS LOCATION | DRIP COVER | SCREENS | PAINT |
|-----------------|------------------|------------|-------------|-------------|--------------------|------------|---------|---------------|
| C-FACE | STANDARD | RIGID | HORIZONTAL | FALSE | NONE | FALSE | NONE | GRAY (POWDER) |

| BEARINGS DE ODE | GREASE | SHAFT TYPE | SPECIAL DE | SPECIAL ODE | SHAFT MATERIAL | FRAME MATERIAL |
|------------------------|-------------|------------|------------|-------------|--------------------------|----------------|
| BALL BALL 6203 6203 | CHEVRON-SRI | T | NONE | NONE | 1144 STRESSPROOF (C-223) | ROLLED STEEL |

| THERMO-PROTECTORS | | | | THERMISTORS | | | SPACE HEATERS | |
|-------------------|------------|----------|----------|-------------|-------|------|---------------|-------|
| THERMOSTATS | PROTECTORS | WDG RTDS | BRG RTDS | NONE | FALSE | NONE | NONE | VOLTS |
| NONE | NOT | NONE | NONE | NONE | FALSE | NONE | NONE | NONE |

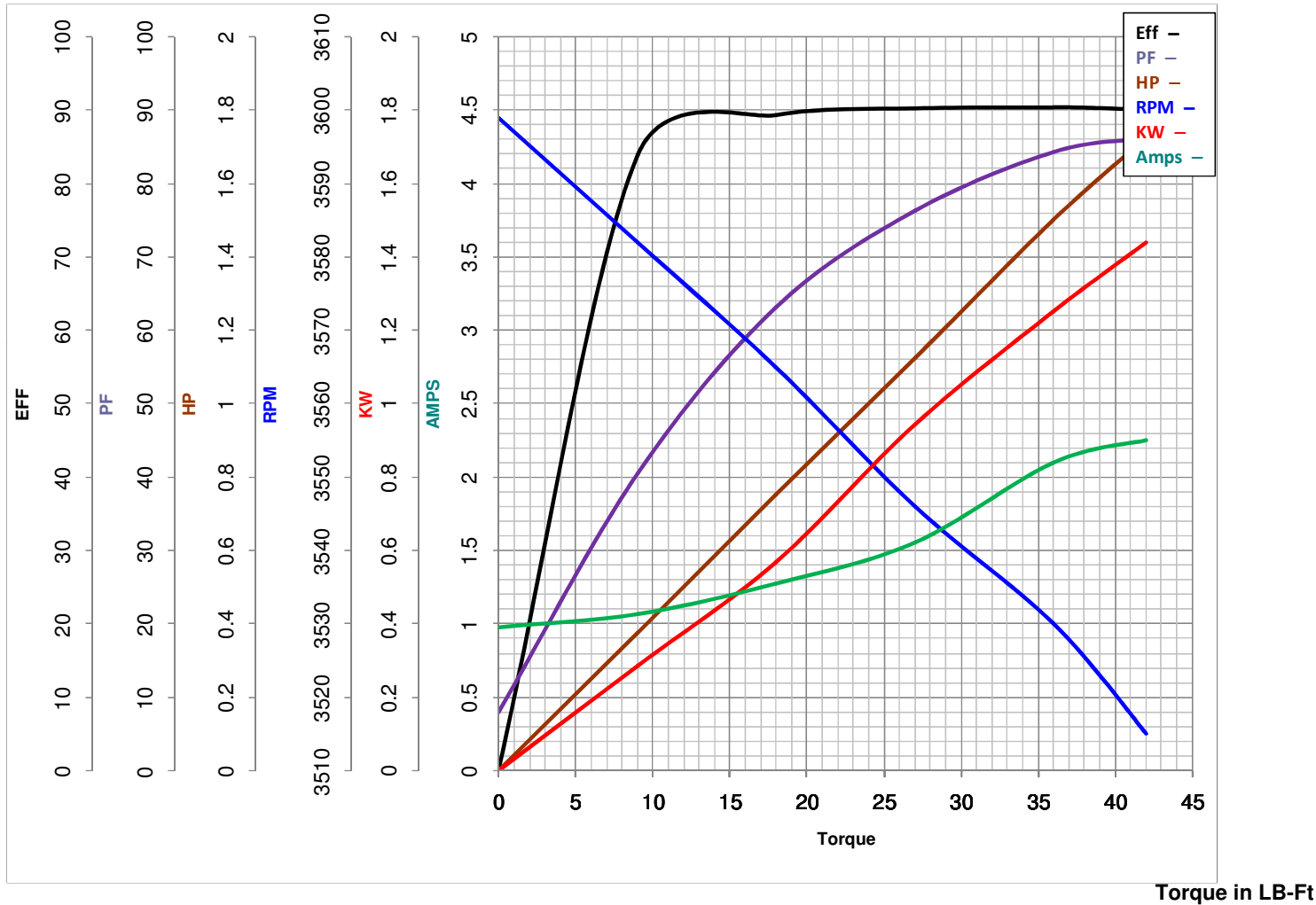
| | | |
|----------|-----------------------------|------|
| * | INVERTER TORQUE: | NONE |
| N | INV. HP SPEED RANGE: | NONE |
| O | ENCODER: | NONE |
| T | BRAKE: | NONE |
| E | | NONE |
| S | | NONE |
| * | | NONE |

PREPARED BY: Bhargavi Dontham
DATE: 06/24/2019 01:35:22 AM
FORM 3531 REV.3 02/07/99
****** Subject to change without notice.



MARATHON ELECTRIC CORPORATION
TYPICAL PERFORMANCE CURVE for AC MOTOR

Customer _____ Curve at 460 Volts HP 1.5&1 PHASE 3
 Model No 56T34D15601 60 HZ
1.5 HP VOLTS 230/460&190/380
 Catalog No K690A HZ 60&50 RPM 3450&2850



| | | | | | |
|-----------|--------------------|-------|-----------|-----------------|-------|
| FL TORQUE | <u>36</u> | LB-Ft | FL AMPS | <u>4.2/2.1</u> | |
| BD TORQUE | <u>174.0</u> | LB-Ft | PU TORQUE | <u>135.0</u> | LB-Ft |
| LR TORQUE | <u>139</u> | LB-Ft | LR AMPS | <u>20.1</u> | |
| WINDING | <u>2501315006-</u> | | Date | <u>3/6/2019</u> | |