

# PRODUCT INFORMATION PACKET

Model No: 071T17V5328  
Catalog No: R720  
1/3, 1800, TENV, IEC, 71, 3/60/208-230/460  
Washdown Duty



Regal and Marathon are trademarks of Regal Beloit Corporation or one of its affiliated companies.  
©2018 Regal Beloit Corporation, All Rights Reserved. MC017097E



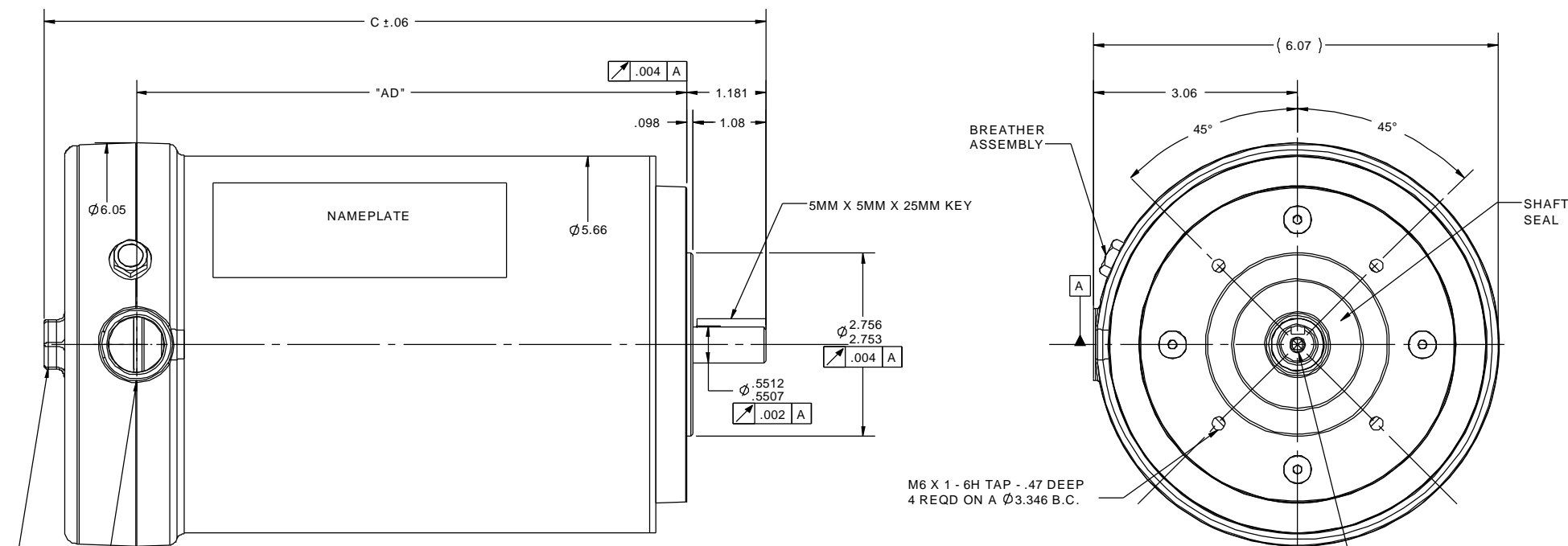
### Nameplate Specifications

Output HP	<b>0.33 Hp</b>	Output KW	<b>0.25 kW</b>
Frequency	<b>60 Hz</b>	Voltage	<b>208-230/460 V</b>
Current	<b>1.3-1.3/0.65 A</b>	Speed	<b>1725 rpm</b>
Service Factor	<b>1.15</b>	Phase	<b>3</b>
Efficiency	<b>72 %</b>	Duty	<b>Continuous</b>
Insulation Class	<b>F</b>	Design Code	<b>B</b>
KVA Code	<b>K</b>	Frame	<b>71</b>
Enclosure	<b>Totally Enclosed Non Ventilated</b>	Overload Protector	<b>No</b>
Ambient Temperature	<b>40 °C</b>	Drive End Bearing Size	<b>6204</b>
Opp Drive End Bearing Size	<b>6204</b>	UL	<b>Recognized</b>
CSA	<b>Y</b>	CE	<b>Y</b>
IP Code	<b>56</b>		

### Technical Specifications

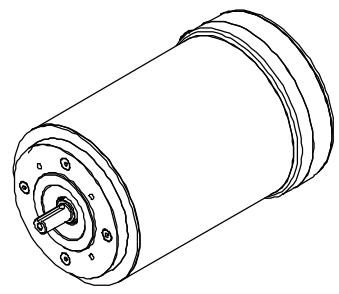
Electrical Type	<b>Squirrel Cage Induction Run</b>	Starting Method	<b>Across The Line</b>
Poles	<b>4</b>	Rotation	<b>Reversible</b>
Mounting	<b>Round</b>	Motor Orientation	<b>Horizontal</b>
Drive End Bearing	<b>Ball</b>	Opp Drive End Bearing	<b>Ball</b>
Frame Material	<b>Stainless Steel</b>	Shaft Type	<b>IEC</b>
Overall Length	<b>9.83 in</b>	Shaft Diameter	<b>0.555 in</b>
Shaft Extension	<b>1.18 in</b>	Assembly/Box Mounting	<b>F1 Only</b>
Outline Drawing	<b>031993ME-550</b>	Connection Diagram	<b>005010-01ME</b>

This is an uncontrolled document once printed or downloaded and is subject to change without notice. Date Created: 06/28/2018



1/2-14 NPT  
CONDUIT HOLE

3/4" HEX DRIVER FOR  
COVER REMOVAL



DASH NO.	"C"	"AD"
525	9.58	6.60
550	9.83	6.85
575	10.08	7.10
600	10.33	7.35
625	10.58	7.60
650	10.83	7.85
675	11.08	8.10
700	11.33	8.35
725	11.58	8.60
750	11.83	8.85
775	12.08	9.10
800	12.33	9.35

NO		REVISION	BY & DATE	CHK LANG	±1/2°	FINISH			DRAWN PVR 10/08/13
							TITLE OUTLINE - STAINLESS STEEL IEC 71 - B14 FRAME		CHK JD 10/08/13
							MAT'L		APPR
							NETWORK FILE NAME 031993ME		SCALE 1:4
							PREV		REF 031993
							SIZE B		FMF 071117V5328
							DRAWING NO 031993ME		PAGE OF
							REV		

VIEW FROM OUTSIDE OF MOTOR AT SWITCH END.



VOLTAGE	L1	L2	L3	JOIN & INSULATE
HIGH	T1	T2	T3	(T4,T7) (T5,T8) (T6,T9)
LOW	T1,T7	T2,T8	T3,T9	T4,T5,T6

TOLERANCES UNLESS SPECIFIED		DRAWN RDW 04/12/02		MARATHON ELECTRIC		CHK				
DEC.	INCHES			TITLE		APPD				
.X	±.1			EXTERNAL WIRING DIAGRAM 3 PHASE W/O PROTECTOR		SCALE 1=1				
.XX	±.01			MAT'L. DECAL - 004014		REF FIG.2-51				
.XXX	±.005			FINISH		FMF				
.XXXX	±.0005			PREV						
NO.	REVISION	BY & DATE	CHK	ANG	±1/2"	FINISH	SIZE	DRAWING NO.	REV.	
			RFP	04/12/02		CAD FILE	00501001ME	A	005010-01ME	
			DIST							

THIS DRAWING IN DESIGN AND DETAIL IS OUR PROPERTY AND MUST NOT BE USED EXCEPT IN CONNECTION WITH OUR WORK ALL RIGHTS OF DESIGN AND INVENTION ARE RESERVED THIS IS AN ELECTRONICALLY GENERATED DOCUMENT - DO NOT SCALE THIS PRINT

