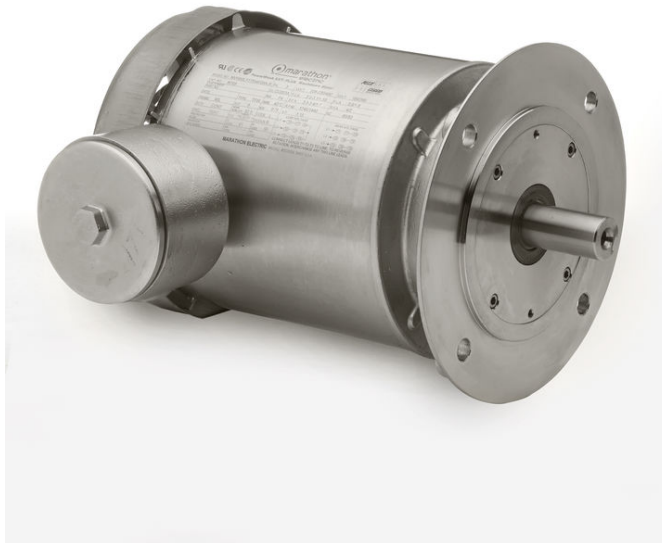


PRODUCT INFORMATION PACKET

Model No: 080T17W5329
Catalog No: R732
3/4, 1800, TEFC, 80, 3/60/208-230/460
Washdown Duty



Regal and Marathon are trademarks of Regal Beloit Corporation or one of its affiliated companies.
©2018 Regal Beloit Corporation, All Rights Reserved. MC017097E



Nameplate Specifications

Output HP	0.75 Hp	Output KW	0.56 kW
Frequency	60 Hz	Voltage	208-230/460 V
Current	2.5-2.4/1.2 A	Speed	1725 rpm
Service Factor	1.15	Phase	3
Efficiency	78.5 %	Duty	Continuous
Insulation Class	F	Design Code	B
KVA Code	K	Frame	80
Enclosure	Totally Enclosed Fan Cooled	Overload Protector	No
Ambient Temperature	40 °C	Drive End Bearing Size	6204
Opp Drive End Bearing Size	6204	UL	Recognized
CSA	Y	CE	Y
IP Code	56		

Technical Specifications

Electrical Type	Squirrel Cage Induction Run	Starting Method	Across The Line
Poles	4	Rotation	Reversible
Mounting	B3	Motor Orientation	Horizontal
Drive End Bearing	Ball	Opp Drive End Bearing	Ball
Frame Material	Stainless Steel	Shaft Type	IEC
Overall Length	12.48 in	Shaft Diameter	0.750 in
Shaft Extension	1.57 in	Assembly/Box Mounting	F3
Outline Drawing	032000ME-850	Connection Diagram	005010.01ME

This is an uncontrolled document once printed or downloaded and is subject to change without notice. Date Created: 07/02/2018

3/4" HEX DRIVER
FOR COVER REMOVAL

1/2"-14 NPT
CONDUIT HOLE

NAMEPLATE

("C")

"AD" ± .06

.46

1.577

.12

1.459

1.30
FULL
DEPTH

6MM SQ x 32MM KEY

M6 x 1.0-6H .63 ∇

ϕ 3.150
.004 A

ϕ .7486
.7481
.002 A

ϕ .39

3.94

1.97 ± .09

4.92

M6 x 1.0 ON
 ϕ 3.937 BC

45°

45°

FRAME
WELD

2.46

4.92

6.06

5.95

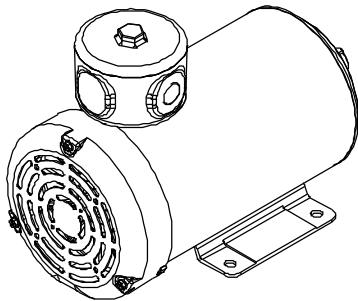
4.44

(9.10)

ϕ 6.14
3.15^{+0.00}
-.02

.18

DASH NO	"C"	"AD"
625	10.23	3.74
650	10.48	3.99
675	10.73	4.24
700	10.98	4.49
725	11.23	4.74
750	11.48	4.99
775	11.73	5.24
800	11.98	5.49
825	12.23	5.74
850	12.48	5.99



NO		REVISION	BY & DATE	CHK	LANG	±1/2°	FINISH	TOLERANCES UNLESS SPECIFIED DEC INCHES		marathon electric		DRAWN	PVR 10/08/13
								X	±.1			CHK	JD 10/08/13
								XX	±.03	TITLE		SCALE	1:2
								XXX	±.005	OUTLINE - 48 FR STAINLESS STEEL IEC-80 B14 FRAME		REF	032000
								XXXX	±.0005	MAT'L		FMF	080T17W5329
										PREV		PAGE	OF
										NETWORK FILE NAME		032000ME	
										SIZE	B	DRAWING NO	032000ME
												REV	

THIRD ANGLE
PROJECTION



NETWORK FILE NAME 032000ME

SIZE

B

DRAWING NO


032000ME

REV

VIEW FROM OUTSIDE OF MOTOR AT SWITCH END.



VOLTAGE	L1	L2	L3	JOIN & INSULATE
HIGH	T1	T2	T3	(T4,T7) (T5,T8) (T6,T9)
LOW	T1,T7	T2,T8	T3,T9	T4,T5,T6

NO.		REVISION	BY & DATE	CHK	ANG	TOLERANCES UNLESS SPECIFIED	 MARATHON ELECTRIC	DRAWN RDW 04/12/02		
						DEC.		INCHES	CHK	
						.X		±.1	APPD	
						.XX		±.01	SCALE 1=1	
						.XXX		±.005	REF FIG.2-51	
						.XXXX	±.0005	FMF		
								PREV		
				RFP	04/12/02	CAD FILE 00501001ME		SIZE	DRAWING NO.	REV.
				DIST				A	005010-01ME	

THIS DRAWING IN DESIGN AND DETAIL IS OUR PROPERTY AND MUST NOT BE USED EXCEPT IN CONNECTION WITH OUR WORK ALL RIGHTS OF DESIGN AND INVENTION ARE RESERVED THIS IS AN ELECTRONICALLY GENERATED DOCUMENT - DO NOT SCALE THIS PRINT

CERTIFICATION DATA SHEET

Model#: 80T17W5329 A WINDING#: T55465 FR 3
 CONN. DIAGRAM: 005010.01ME ASSEMBLY: F3
 OUTLINE: 032000ME-850

TYPICAL MOTOR PERFORMANCE DATA

HP	KW	SYNC. RPM	F.L. RPM	FRAME	ENCLOSURE	KVA CODE	DESIGN
3/4&3/4	.56&.56	1800	1725&1425	80	TEFC	K	B

PH	Hz	VOLTS	FL AMPS	START TYPE	DUTY	INSL	S.F	AMB°C	ELEVATION
3	60/50	208- 230/460#190/ 380	2.5- 2.4/1.2&2.6/1. 3	ACROSS THE LINE	CONTINUOU S	F4	1.15/1.0	40	3300

FULL LOAD EFF: 78.5&78.5	3/4 LOAD EFF: 76.7	1/2 LOAD EFF: 72.6	GTD. EFF	ELEC. TYPE	NO LOAD AMPS
FULL LOAD PF: 79&83.6	3/4 LOAD PF: 72.6	1/2 LOAD PF: 60.9	0	SQ CAGE IND RUN	1.3 / .7

F.L. TORQUE	LOCKED ROTOR AMPS	L.R. TORQUE	B.D. TORQUE	F.L. RISE°C
36 LB-FT	16 / 8	150 LB-FT 417	145 LB-FT 403	0

SOUND PRESSURE @ 3 FT.	SOUND POWER	ROTOR WK^2	MAX. WK^2	SAFE STALL TIME	STARTS /HOUR	APPROX. MOTOR WGT
0 dBA	10 dBA	0 LB-FT^2	0 LB-FT^2	10 SEC.	0	0 LBS.

*** SUPPLEMENTAL INFORMATION ***

DE BRACKET TYPE	ODE BRACKET TYPE	MOUNT TYPE	ORIENTATION	SEVERE DUTY	HAZARDOUS LOCATION	DRIP COVER	SCREENS	PAINT
B14	STANDARD	B3	HORIZONTAL	FALSE	NONE	FALSE	NONE	NO PAINT

BEARINGS		GREASE	SHAFT TYPE	SPECIAL DE	SPECIAL ODE	SHAFT MATERIAL	FRAME MATERIAL
DE	OPE						
BALL	BALL	POLYREX EM	STANDARD IEC	NONE	NONE	303 STAINLESS (C-501)	STAINLESS STEEL
6204	6204						

THERMO-PROTECTORS				THERMISTORS	CONTROL	SPACE /n HEATERS
THERMOSTATS	PROTECTORS	WDG RTDs	BRG RTDs			
NONE	NOT	NONE	NONE	NONE	FALSE	NONE VOLTS

If Inverter equals NONE, contact factory for further information

INVERTER TORQUE: NONE
INV. HP SPEED RANGE: NONE
ENCODER: NONE
NONE NONE
NONE NONE PPR
BRAKE: NONE NONE
NONE P/N NONE
NONE NONE
NONE FT-LB NONE V NONE Hz

*
N
O
T
E
S
*

DATE: 06/28/2017 04:04:08 AM
 FORM 3531 REV.3 02/07/99

** Subject to change without notice.