

# PRODUCT INFORMATION PACKET

Model No: 090LT17W4028

Catalog No: R707

2 HP Washdown Motor, 3 phase, 1800 RPM, 208-230/460 V, 90L Frame, TEFC  
Washdown Duty Motors



Regal and Marathon are trademarks of Regal Beloit Corporation or one of its affiliated companies.  
©2020 Regal Beloit Corporation, All Rights Reserved. MC017097E

REGAL

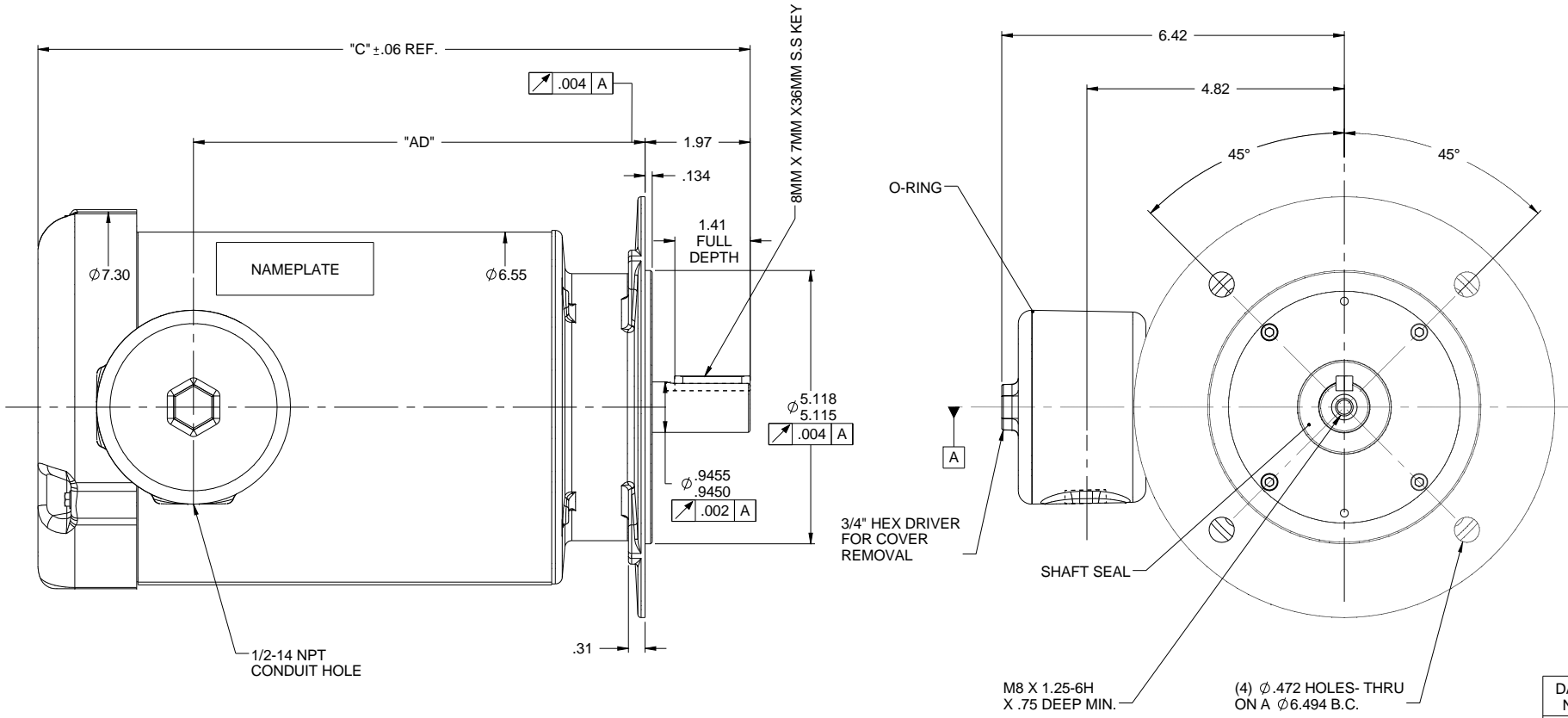
### Nameplate Specifications

Output HP	<b>2 Hp</b>	Output KW	<b>1.5 kW</b>
Frequency	<b>60 Hz</b>	Voltage	<b>208-230/460 V</b>
Current	<b>6.0-5.6/2.8 A</b>	Speed	<b>1740 rpm</b>
Service Factor	<b>1.15</b>	Phase	<b>3</b>
Efficiency	<b>84 %</b>	Power Factor	<b>75</b>
Duty	<b>Continuous</b>	Insulation Class	<b>F</b>
Design Code	<b>B</b>	KVA Code	<b>L</b>
Frame	<b>90L</b>	Enclosure	<b>Totally Enclosed Fan Cooled</b>
Thermal Protection	<b>No</b>	Ambient Temperature	<b>40 °C</b>
Drive End Bearing Size	<b>6205</b>	Opp Drive End Bearing Size	<b>6205</b>
UL	<b>Recognized</b>	CSA	<b>Y</b>
CE	<b>Y</b>	IP Code	<b>56</b>

### Technical Specifications

Electrical Type	<b>Squirrel Cage Inverter Rated</b>	Starting Method	<b>Line Or Inverter</b>
Poles	<b>4</b>	Rotation	<b>Reversible</b>
Resistance Main	<b>7.44 Ohms</b>	Mounting	<b>Round</b>
Motor Orientation	<b>Horizontal</b>	Drive End Bearing	<b>Ball</b>
Opp Drive End Bearing	<b>Ball</b>	Frame Material	<b>Stainless Steel</b>
Shaft Type	<b>IEC</b>	Overall Length	<b>13.34 in</b>
Shaft Diameter	<b>1.000 in</b>	Shaft Extension	<b>1.97 in</b>
Assembly/Box Mounting	<b>F1 ONLY</b>		
Connection Drawing	<b>005010.01ME</b>	Outline Drawing	<b>607-0155-775</b>

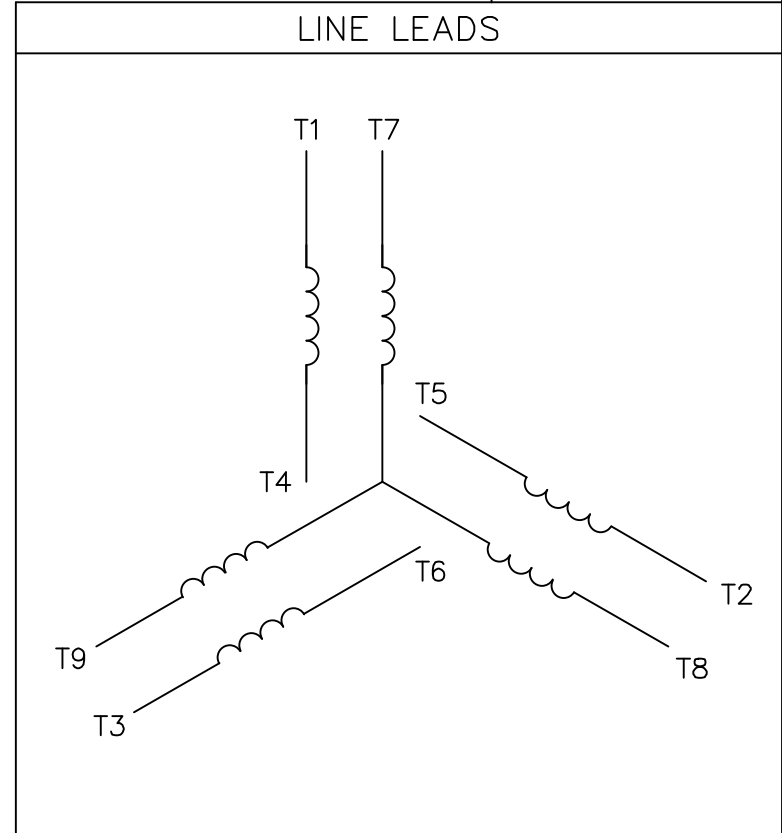
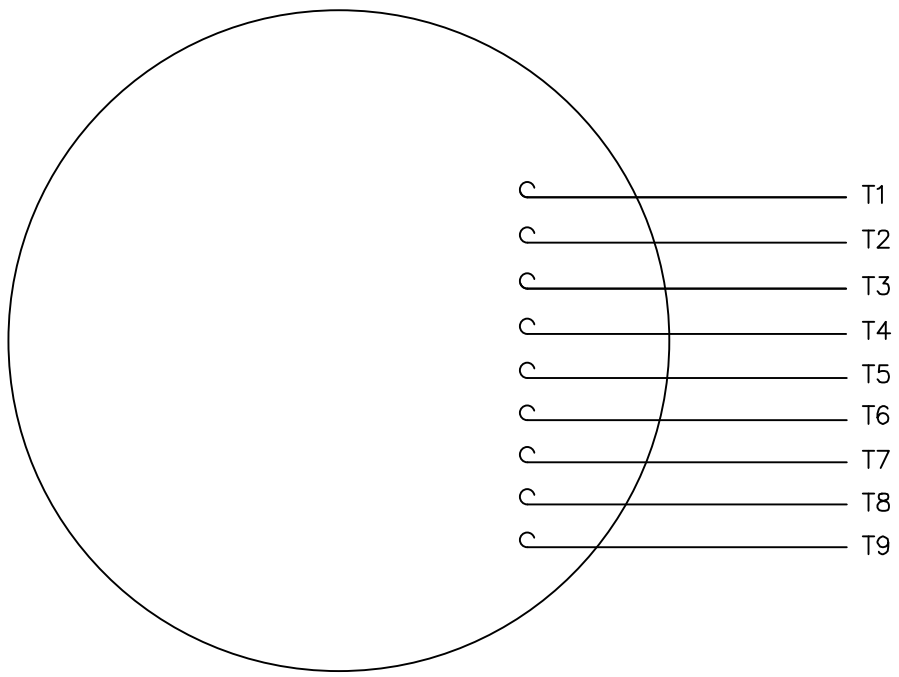
This is an uncontrolled document once printed or downloaded and is subject to change without notice. Date Created:18/06/2020




DASH NO.	"C"	"AD"
825	13.84	8.96
775	13.34	8.46
750	13.09	8.21
725	12.84	7.96
700	12.59	7.71
675	12.34	7.46
650	12.09	7.21
625	11.84	6.96

		TOLERANCES UNLESS SPECIFIED				DRAWN PVR 10/08/13	
		DEC	INCHES			CHK JD 10/08/13	
		x	±.1	TITLE OUTLINE 90L FRAME		APPR	
		xx	±.03	TEFC B5 FLANGE		SCALE 1:2	
		xxx	±.005	MATL		REF OL117518	
		xxxx	±.0005			FMF 090T17W4026	
NO	REVISION	BY & DATE	CHK ANG ±1/2°	FINISH	PAGE OF		REV
			RFP	PREV	SIZE <b>B</b>	DRAWING NO <b>607-0155</b>	
	THIRD ANGLE PROJECTION		NETWORK FILE NAME 607-0155				

VIEW FROM OUTSIDE OF MOTOR AT SWITCH END.



VOLTAGE	L1	L2	L3	JOIN & INSULATE
HIGH	T1	T2	T3	(T4,T7) (T5,T8) (T6,T9)
LOW	T1,T7	T2,T8	T3,T9	T4,T5,T6

NO.	REVISION	BY & DATE	CHK	TOLERANCES UNLESS SPECIFIED		TITLE	DRAWN RDW 04/12/02		
				DEC.	INCHES				
				.X	±.1	 EXTERNAL WIRING DIAGRAM 3 PHASE W/O PROTECTOR	CHK		
				.XX	±.01		APPD		
				.XXX	±.005		SCALE 1=1		
				.XXXX	±.0005		REF FIG.2-51		
				ANG	±1/2'	MAT'L. DECAL - 004014	FMF		
						FINISH	PREV		
				RFP	04/12/02	CAD FILE 00501001ME	SIZE A	DRAWING NO. 005010-01ME	REV.
				DIST					

THIS DRAWING IN DESIGN AND DETAIL IS OUR PROPERTY AND MUST NOT BE USED EXCEPT IN CONNECTION WITH OUR WORK ALL RIGHTS OF DESIGN AND INVENTION ARE RESERVED THIS IS AN ELECTRONICALLY GENERATED DOCUMENT - DO NOT SCALE THIS PRINT