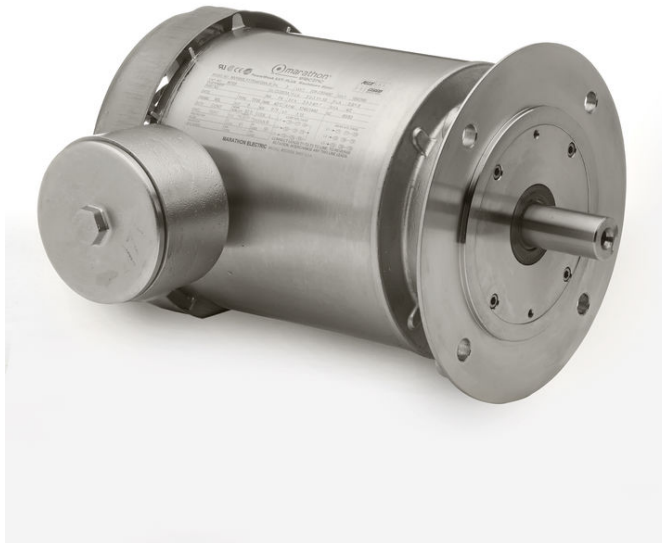


# PRODUCT INFORMATION PACKET

Model No: 090LT17W6026  
Catalog No: R705A  
1,1800,TEFC,90L,3/60/230/460  
Washdown Duty



Regal and Marathon are trademarks of Regal Beloit Corporation or one of its affiliated companies.  
©2019 Regal Beloit Corporation, All Rights Reserved. MC017097E



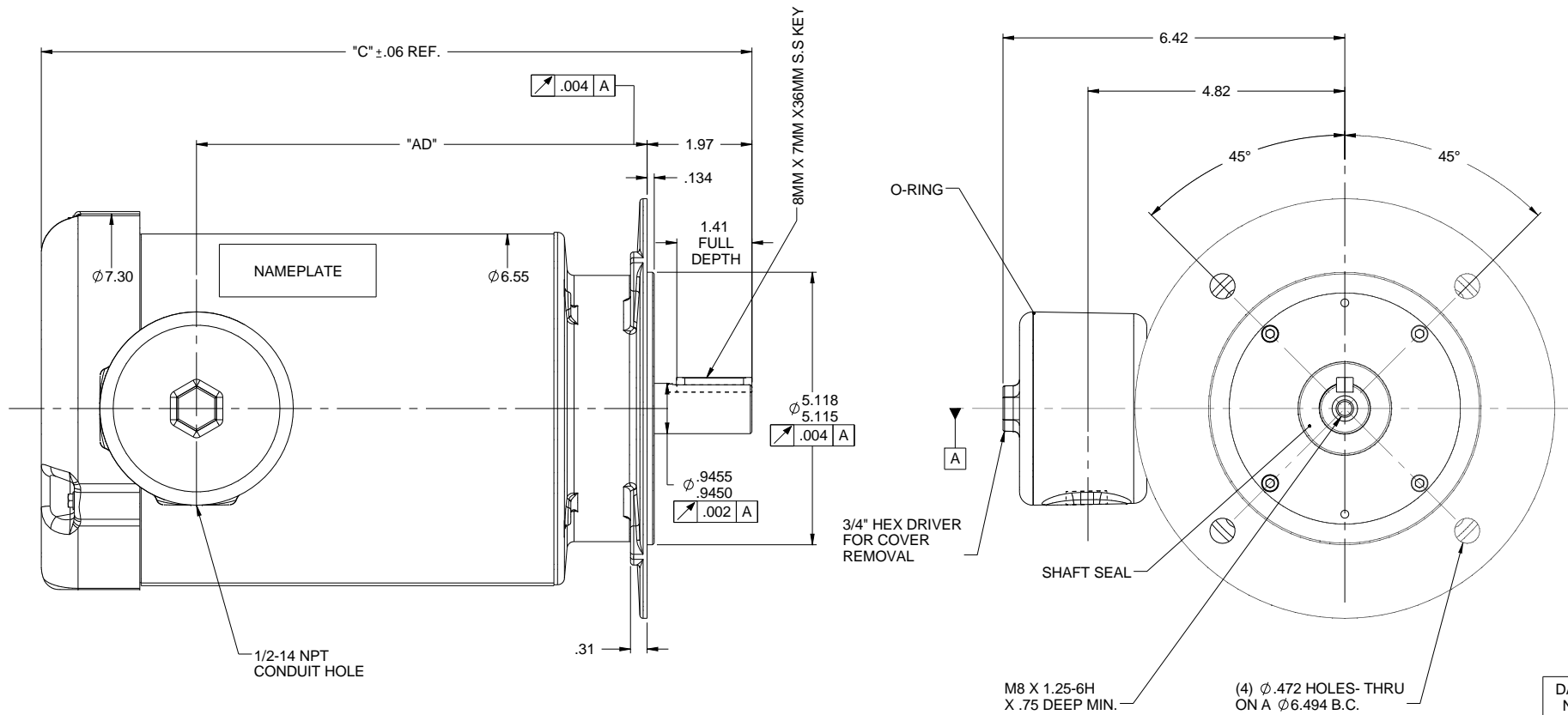
### Nameplate Specifications

Output HP	<b>1 Hp</b>	Output KW	<b>0.75 kW</b>
Frequency	<b>60 Hz</b>	Voltage	<b>230/460 V</b>
Current	<b>3.2/1.6 A</b>	Speed	<b>1725 rpm</b>
Service Factor	<b>1.15</b>	Phase	<b>3</b>
Efficiency	<b>85.5 %</b>	Duty	<b>Continuous</b>
Insulation Class	<b>F</b>	Design Code	<b>B</b>
KVA Code	<b>N</b>	Frame	<b>90L</b>
Enclosure	<b>Totally Enclosed Fan Cooled</b>	Overload Protector	<b>No</b>
Ambient Temperature	<b>40 °C</b>	Drive End Bearing Size	<b>6205</b>
Opp Drive End Bearing Size	<b>6205</b>	UL	<b>Recognized</b>
CSA	<b>Y</b>	CE	<b>Y</b>
IP Code	<b>56</b>		

### Technical Specifications

Electrical Type	<b>Squirrel Cage Inverter Rated</b>	Starting Method	<b>Line Or Inverter</b>
Poles	<b>4</b>	Rotation	<b>Reversible</b>
Mounting	<b>Round</b>	Motor Orientation	<b>Horizontal</b>
Drive End Bearing	<b>Ball</b>	Opp Drive End Bearing	<b>Ball</b>
Frame Material	<b>Stainless Steel</b>	Shaft Type	<b>IEC</b>
Overall Length	<b>12.59 in</b>	Shaft Diameter	<b>1.000 in</b>
Shaft Extension	<b>1.97 in</b>	Assembly/Box Mounting	<b>F1 ONLY</b>
Outline Drawing	<b>607-0155-700</b>	Connection Diagram	<b>005010.01</b>

This is an uncontrolled document once printed or downloaded and is subject to change without notice. Date Created: 02/12/2019



DASH NO.	"C"	"AD"
825	13.84	8.96
775	13.34	8.46
750	13.09	8.21
725	12.84	7.96
700	12.59	7.71
675	12.34	7.46
650	12.09	7.21
625	11.84	6.96

NO		REVISION		BY & DATE		CHK ANG ±1/2"		FINISH		DRAWING NO		REV	
						RFP		PREV		SIZE <b>B</b>		DRAWING NO <b>607-0155</b>	
						NETWORK FILE NAME 607-0155							

TOLERANCES UNLESS SPECIFIED		marathon <sup>®</sup> electric	
DEC	INCHES	TITLE OUTLINE 90L FRAME TEFC B5 FLANGE MATL	
x	±.1		
xx	±.03		
xxx	±.005		
xxxx	±.0005	PAGE OF	

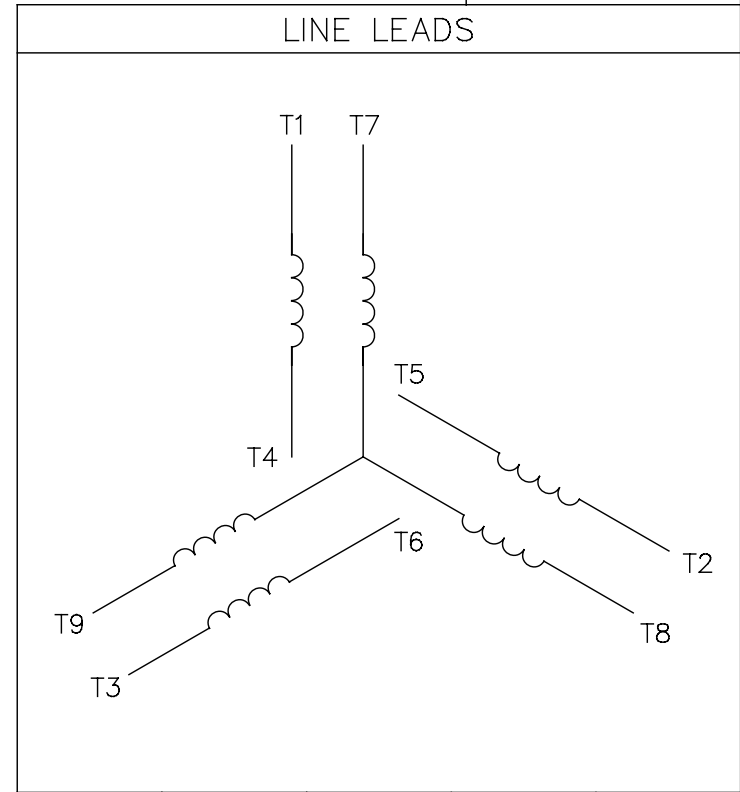
  

DRAWN PVR 10/08/13	
CHK JD 10/08/13	
APPR	
SCALE 1:2	
REF OL117518	
FMF 090T17W4026	

THIRD ANGLE PROJECTION

005010-01

VIEW FROM OUTSIDE OF MOTOR AT SWITCH END.



VOLTAGE	L1	L2	L3	JOIN & INSULATE
HIGH	T1	T2	T3	(T4,T7) (T5,T8) (T6,T9)
LOW	T1,T7	T2,T8	T3,T9	T4,T5,T6

				TOLERANCES UNLESS SPECIFIED		<b>Regal Beloit America, Inc.</b>		DRAWN RDW 04/12/02				
				DEC.	INCHES			CHK				
				.X	±.1			APPD				
				.XX	±.01			SCALE 1=1				
				.XXX	±.005	TITLE		REF FIG.2-51				
A	UPDATED TO REGAL LOGO			SAJ	06/26/15	AJY	.XXXX	±.0005	MAT'L. DECAL - 004014	FMF		
NO.	REVISION			BY & DATE	CHK	ANG	±1/2"	FINISH	PREV			
THIS DRAWING IN DESIGN AND DETAIL IS OUR PROPERTY AND MUST NOT BE USED EXCEPT IN CONNECTION WITH OUR WORK ALL RIGHTS OF DESIGN AND INVENTION ARE RESERVED THIS IS AN ELECTRONICALLY GENERATED DOCUMENT - DO NOT SCALE THIS PRINT				RFP	04/12/02		CAD FILE	00501001		SIZE	DRAWING NO.	REV.
				DIST	BRF-NLV			A	005010-01		A	

**CERTIFICATION DATA SHEET**

<b>Model#:</b>	90LT17W6026 A	<b>WINDING#:</b>	T634342 FR 3
<b>CONN. DIAGRAM:</b>	005010.01	<b>ASSEMBLY:</b>	F1 ONLY
<b>OUTLINE:</b>	607-0155-700		

**TYPICAL MOTOR PERFORMANCE DATA**

HP	KW	SYNC. RPM	F.L. RPM	FRAME	ENCLOSURE	KVA CODE	DESIGN
1&1	.75&.75	1800	1725&1450	90L	TEFC	N	B

PH	Hz	VOLTS	FL AMPS	START TYPE	DUTY	INSL	S.F	AMB°C	ELEVATION
3	60/50	230/460#190/380	3.2/1.6&3.4/1.7	LINE OR INVERTER	CONTINUOUS	F4	1.15/1.15	40	3300

FULL LOAD EFF: 85.5&81.5	3/4 LOAD EFF: 85.4	1/2 LOAD EFF: 79.6	GTD. EFF	ELEC. TYPE	NO LOAD AMPS
			0	SQ CAGE INV RATED	2 / 1

F.L. TORQUE	LOCKED ROTOR AMPS	L.R. TORQUE	B.D. TORQUE	F.L. RISE°C
3 LB-FT	28 / 14	12 LB-FT 0	15.8 LB-FT 0	0

SOUND PRESSURE @ 3 FT.	SOUND POWER	ROTOR WK^2	MAX. WK^2	SAFE STALL TIME	STARTS / HOUR	APPROX. MOTOR WGT
0 dBA	10 dBA	0.12 LB-FT^2	0.1 LB-FT^2	10 SEC.	0	0 LBS.

**\*\*\* SUPPLEMENTAL INFORMATION \*\*\***

DE BRACKET TYPE	ODE BRACKET TYPE	MOUNT TYPE	ORIENTATION	SEVERE DUTY	HAZARDOUS LOCATION	DRIP COVER	SCREENS	PAINT
B5	STANDARD	ROUND	HORIZONTAL	FALSE	NONE	FALSE	NONE	NO PAINT

BEARINGS		GREASE	SHAFT TYPE	SPECIAL DE	SPECIAL ODE	SHAFT MATERIAL	FRAME MATERIAL
DE	OPE						
BALL	BALL	POLYREX EM	STANDARD IEC	NONE	NONE	303 STAINLESS (C-501)	STAINLESS STEEL
6205	6205						

THERMO-PROTECTORS				THERMISTORS	CONTROL	SPACE /n HEATERS
THERMOSTATS	PROTECTORS	WDG RTDs	BRG RTDs			
NONE	NOT	NONE	NONE	NONE	FALSE	NONE VOLTS

If Inverter equals NONE, contact factory for further information

\*  
N  
O  
T  
E  
S  
\*

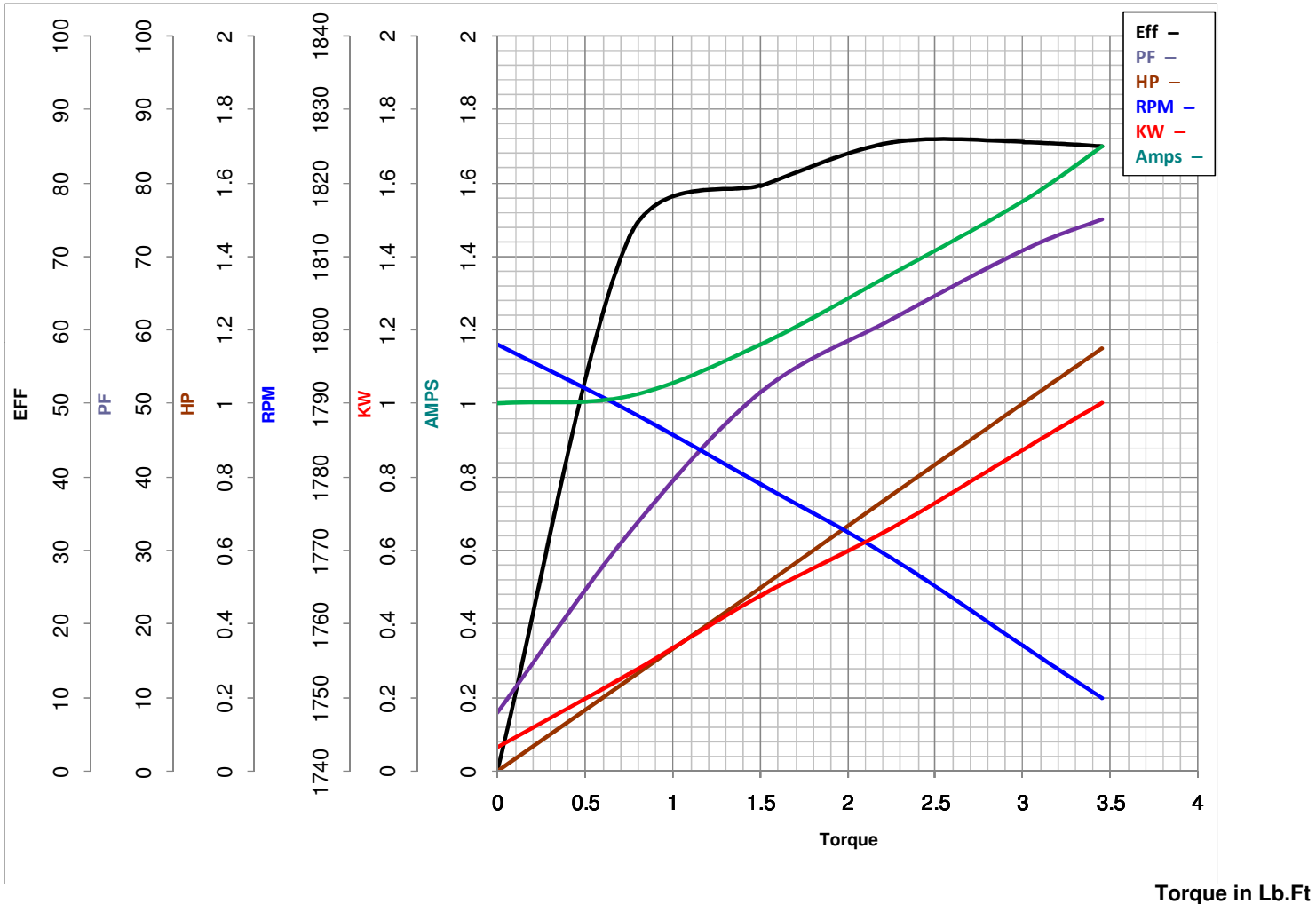
INVERTER TORQUE: CONSTANT 6:1
INV. HP SPEED RANGE: NONE
ENCODER: NONE
NONE NONE
NONE NONE PPR
BRAKE: NONE NONE
NONE P/N NONE
NONE NONE
NONE FT-LB NONE V NONE Hz

DATE: 06/28/2017 04:13:15 AM  
FORM 3531 REV.3 02/07/99  
\*\* Subject to change without notice.



**MARATHON ELECTRIC CORPORATION**  
TYPICAL PERFORMANCE CURVE for AC MOTOR

Customer \_\_\_\_\_ Curve at 460 Volts HP 1&1 PHASE 3  
60 HZ  
 Model No 90LT17W6026 1 HP VOLTS 230/460&190/380  
 Catalog No R705A HZ 60&50 RPM 1725&1450



FL TORQUE	<u>3</u>	Lb.Ft	FL AMPS	<u>3.2/1.6</u>	
BD TORQUE	<u>15.8</u>	Lb.Ft	PU TORQUE	<u>11.9</u>	Lb.Ft
LR TORQUE	<u>12</u>	Lb.Ft	LR AMPS	<u>14</u>	
WINDING	T634342-		Date		