

PRODUCT INFORMATION PACKET

Model No: 100LTFC6536

Catalog No: R352A

4 HP General Purpose, 3 phase, 1800 RPM, 230/460 V, 100L Frame, TEFC
Cast Iron TEFC Motors





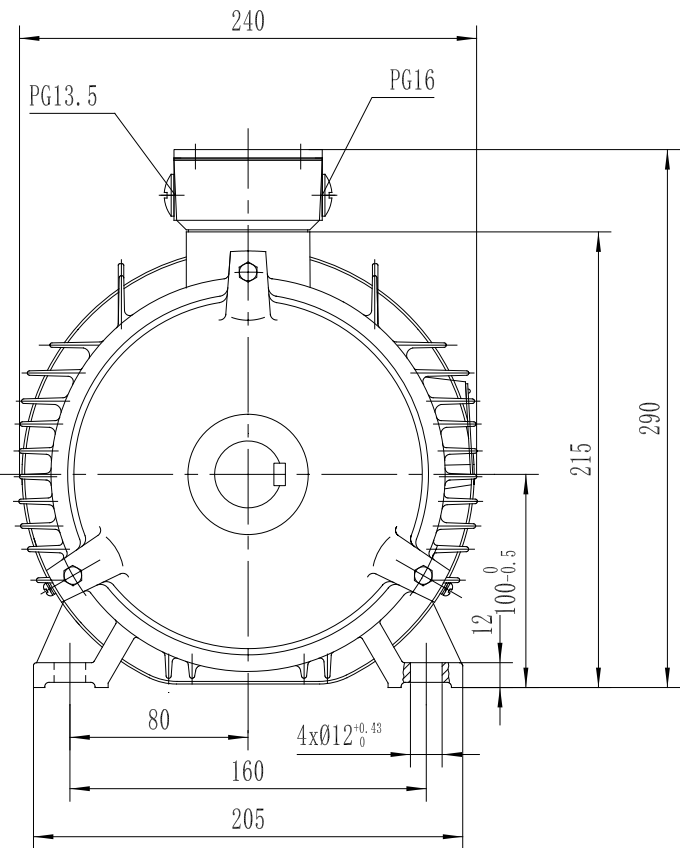
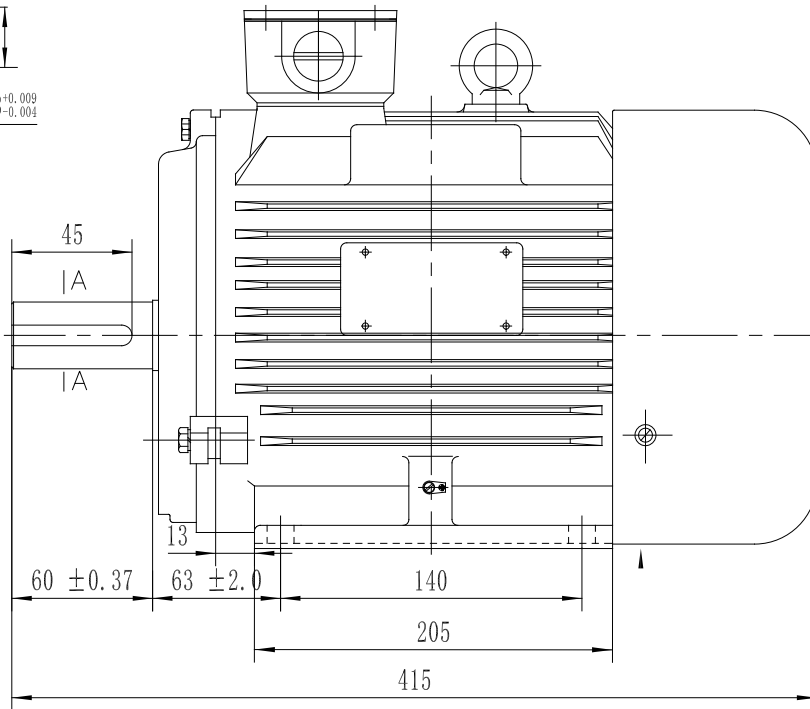
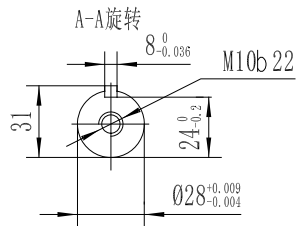
Nameplate Specifications

Output HP	4 Hp	Output KW	3.0 kW
Frequency	60 Hz	Voltage	230/460 V
Current	10.0/5.0 A	Speed	1760 rpm
Service Factor	1.15	Phase	3
Efficiency	89.5 %	Power Factor	81.5
Duty	Continuous	Insulation Class	F
Design Code	B	KVA Code	J
Frame	100L	Enclosure	Totally Enclosed Fan Cooled
Thermal Protection	No	Ambient Temperature	40 °C
Drive End Bearing Size	6206	Opp Drive End Bearing Size	6205
UL	No	CSA	Y
CE	Y	IP Code	54

Technical Specifications

Electrical Type	Squirrel Cage Inverter Rated	Starting Method	Line Or Inverter
Poles	4	Rotation	Reversible
Resistance Main	2.42 Ohms	Mounting	Rigid Base
Motor Orientation	Horizontal	Drive End Bearing	Ball
Opp Drive End Bearing	Ball	Frame Material	Cast Iron
Shaft Type	IEC	Overall Length	16.33 in
Shaft Diameter	1.111 in	Shaft Extension	2.36 in
Assembly/Box Mounting	F3		
Connection Drawing	005010.01	Outline Drawing	B-SS622236-DF100L1-4R

This is an uncontrolled document once printed or downloaded and is subject to change without notice. Date Created:19/10/2020



DF100L-2R	193303.60
DF100L1-4R	193301.60
DF100L2-4R	193304.60
DF100L-6R	193300.60
FRAME	PART #

TOLERANCES UNLESS SPECIFIED		REGAL Regal-Beloit Corporation		DRAWN		
DEC.	INCHES			CHK		
.X	±.1	TITLE OUTLINE		APPD		
.XX	±.03	MATERIAL		SCALE		
.XXX	±.005	FINISH		REF		
.XXXX	±.0005	CAD FILE		FMF		
ANG	±1/2	DIST		PREV		
NO.	REVISION	BY & DATE	CHK	SIZE	DRAWING NO.	REV.
THIS DRAWING IN DESIGN AND DETAIL IS OUR PROPERTY AND MUST NOT BE USED EXCEPT IN CONNECTION WITH OUR WORK ALL RIGHTS OF DESIGN AND INVENTION ARE RESERVED THIS IS AN ELECTRONICALLY GENERATED DOCUMENT - DO NOT SCALE THIS PRINT				B	SS622236	

005010-01

VIEW FROM OUTSIDE OF MOTOR AT SWITCH END.



VOLTAGE	L1	L2	L3	JOIN & INSULATE
HIGH	T1	T2	T3	(T4,T7) (T5,T8) (T6,T9)
LOW	T1,T7	T2,T8	T3,T9	T4,T5,T6

				TOLERANCES UNLESS SPECIFIED		REGAL ™ Regal Beloit America, Inc.		DRAWN RDW 04/12/02				
				DEC.	INCHES			CHK				
				.X	±.1			APPD				
				.XX	±.01			SCALE 1=1				
				.XXX	±.005	TITLE		REF FIG.2-51				
A	UPDATED TO REGAL LOGO		SAJ 06/26/15	AJY .XXXX	±.0005	MAT'L.		FMF				
NO.	REVISION		BY & DATE	CHK	ANG	±1/2"	FINISH		PREV			
THIS DRAWING IN DESIGN AND DETAIL IS OUR PROPERTY AND MUST NOT BE USED EXCEPT IN CONNECTION WITH OUR WORK ALL RIGHTS OF DESIGN AND INVENTION ARE RESERVED THIS IS AN ELECTRONICALLY GENERATED DOCUMENT - DO NOT SCALE THIS PRINT				RFP	04/12/02		CAD FILE		00501001	SIZE	DRAWING NO.	REV.
				DIST		BRF-NLV		A		005010-01		A

