

# PRODUCT INFORMATION PACKET

Model No: 145TBWD5329  
Catalog No: N287  
1 1/2, 1800, TEFC, 145TC, 1/60/115/208-230  
Washdown Duty



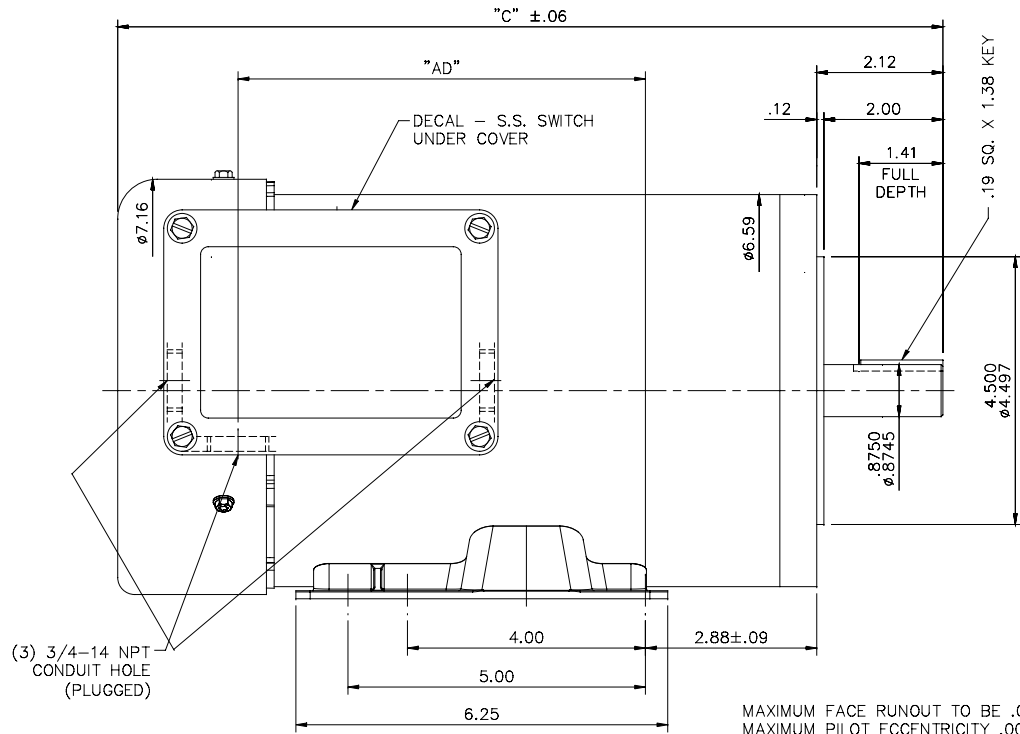
Regal and Marathon are trademarks of Regal Beloit Corporation or one of its affiliated companies.  
©2018 Regal Beloit Corporation, All Rights Reserved. MC017097E

### Nameplate Specifications

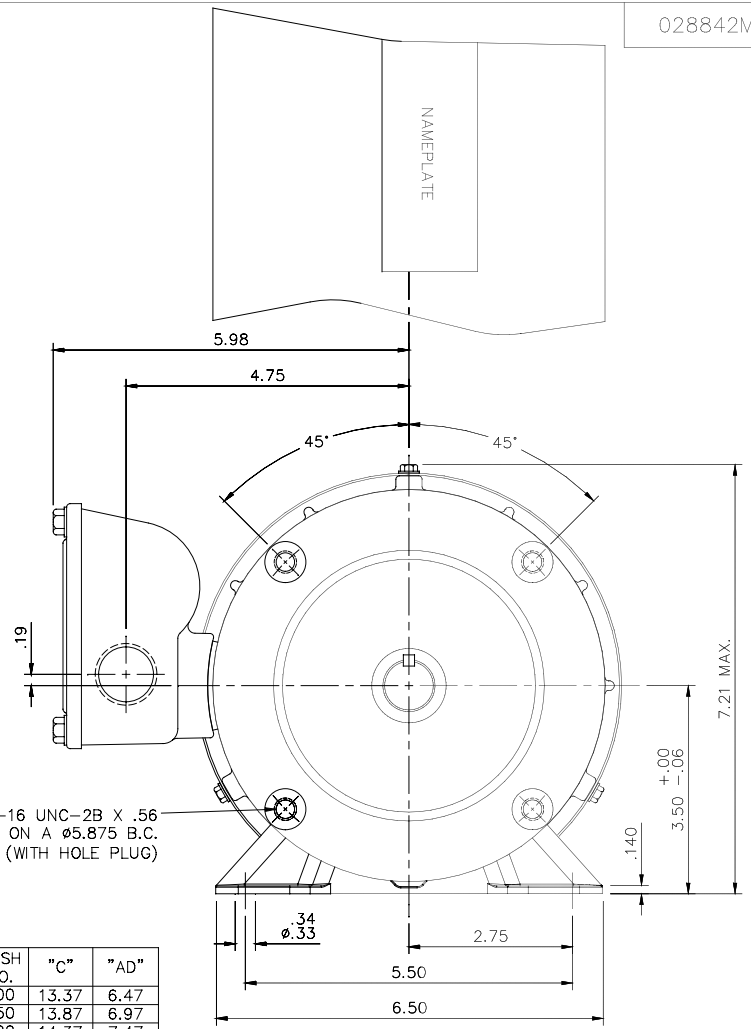
Output HP	<b>1.50 Hp</b>	Output KW	<b>1.1 kW</b>
Frequency	<b>60 Hz</b>	Voltage	<b>115/208-230 V</b>
Current	<b>14.8/7.8-7.4 A</b>	Speed	<b>1740 rpm</b>
Service Factor	<b>1.15</b>	Phase	<b>1</b>
Efficiency	<b>80 %</b>	Duty	<b>Continous</b>
Insulation Class	<b>F</b>	Design Code	<b>L</b>
KVA Code	<b>J</b>	Frame	<b>145TC</b>
Enclosure	<b>Totally Enclosed Fan Cooled</b>	Overload Protector	<b>No</b>
Ambient Temperature	<b>40 °C</b>	Drive End Bearing Size	<b>6205</b>
Opp Drive End Bearing Size	<b>6203</b>	UL	<b>Recognized</b>
CSA	<b>Y</b>	CE	<b>Y</b>
IP Code	<b>55</b>		

### Technical Specifications

Electrical Type	<b>Capacitor Start Capacitor Run</b>	Starting Method	<b>Across The Line</b>
Poles	<b>4</b>	Rotation	<b>Selective Counterclockwise</b>
Mounting	<b>Rigid base</b>	Motor Orientation	<b>Horizontal</b>
Drive End Bearing	<b>Ball</b>	Opp Drive End Bearing	<b>Ball</b>
Frame Material	<b>Stainless Steel</b>	Shaft Type	<b>T</b>
Overall Length	<b>14.87 in</b>	Frame Length	<b>9.50 in</b>
Shaft Diameter	<b>0.875 in</b>	Shaft Extension	<b>2.12 in</b>
Assembly/Box Mounting	<b>F1 Only</b>		
Outline Drawing	<b>028842ME-950</b>	Connection Diagram	<b>005314.03ME</b>



(4) 3/8-16 UNC-2B X .56 DEEP ON A Ø5.875 B.C. (WITH HOLE PLUG)



MAXIMUM FACE RUNOUT TO BE .004 T.I.R.  
 MAXIMUM PILOT ECCENTRICITY .004 T.I.R.  
 PERMISSIBLE SHAFT RUNOUT .002 T.I.R.

DASH NO.	"C"	"AD"
800	13.37	6.47
850	13.87	6.97
900	14.37	7.47
950	14.87	7.97

**ALL-STAINLESS**  
 VITON CONDUIT BOX & COVER GASKETS  
 VITON O-RINGS IN ENDBELL RABBETS & UNDER THRU BOLT HEADS  
 VITON SHAFT SEALS  
 BREATHER PLUGS IN CONDUIT BOX & L.E. ENDBELL  
 ALL STAINLESS STEEL CONSTRUCTION

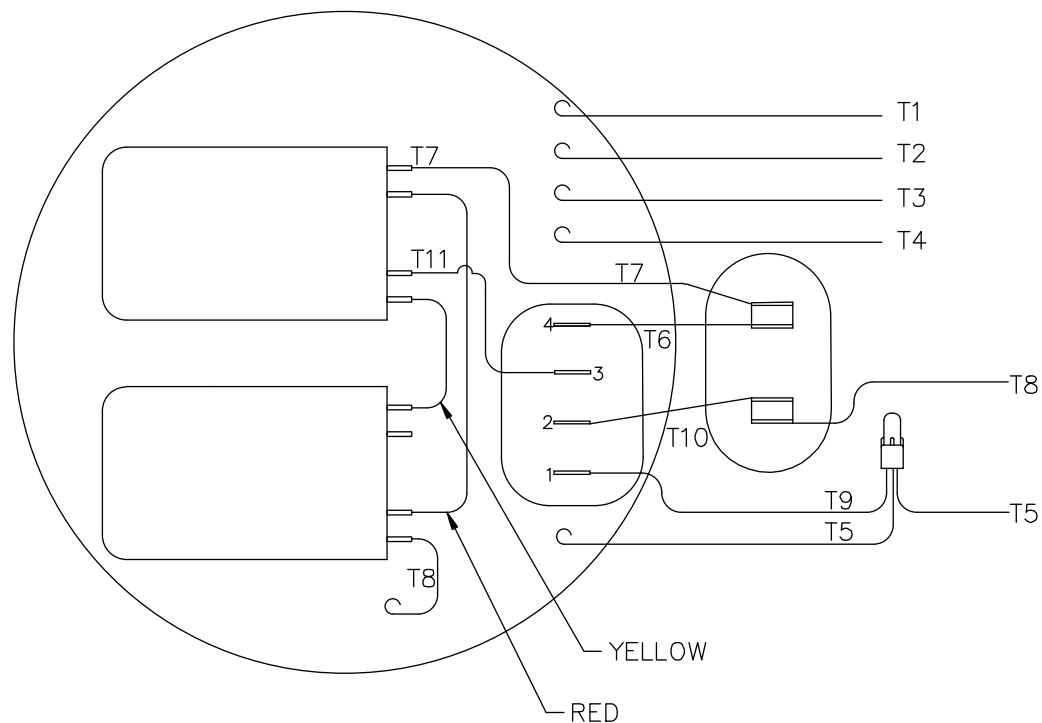
ORACLE REV NO.
02

		TOLERANCES UNLESS SPECIFIED	
DEC.	INCHES	DEC.	INCHES
.X	±.1	.XX	±.03
		.XXX	±.005
D	REVISED BASE PER ECO-0097012	ARV	2/15/16
C	BASE LOCATION DIM.2.88 CHANGED TO C-FACE	PVR	10/31/13
NO.	REVISION	BY & DATE	CHK
			ANG ±1/2"
			RFP
			DIST

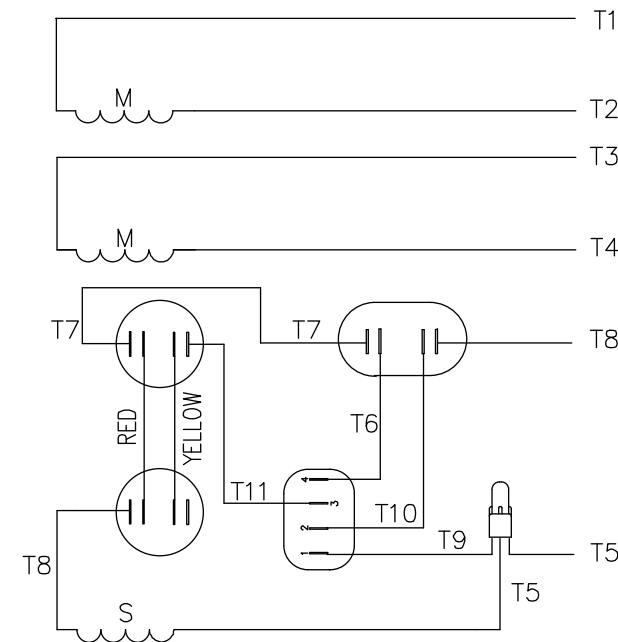
THIS DRAWING IN DESIGN AND DETAIL IS OUR PROPERTY AND MUST NOT BE USED EXCEPT IN CONNECTION WITH OUR WORK ALL RIGHTS OF DESIGN AND INVENTION ARE RESERVED THIS IS AN ELECTRONICALLY GENERATED DOCUMENT - DO NOT SCALE THIS PRINT

MARATHON ELECTRIC		DRAWN	PVR	10/22/13
TITLE		CHK	JD	10/22/13
OUTLINE - 140TC FRAME TEFC - RIGID "C"		APPD		
MAT'L		SCALE	1=2	
STAINLESS STEEL DUCK		REF	028842	
FINISH		FMF	145TBWD5329	
CAD FILE		PREV		
028842ME		SIZE	DRAWING NO.	REV.
		B	028842ME	D

VIEW FROM OUTSIDE OF MOTOR AT SWITCH END.



LINE LEADS



	ROTATION FACING LEAD END	L1	L2	JOIN & INSULATE
HIGH VOLT	C.C.W.	T1	T4, T5	T2, T3 T8
	C.W.	T1	T4, T8	T2, T3 T5
LOW VOLT	C.C.W.	T1, T3 T8	T2, T4 T5	
	C.W.	T1, T3 T5	T2, T4 T8	

		TOLERANCES UNLESS SPECIFIED		MARATHON ELECTRIC		DRAWN LST 8/21/13		
		DEC.	INCHES			CHK		
		.X	±.1			APPD		
		.XX	±.01	TITLE		SCALE 1=1		
		.XXX	±.005	EXTERNAL WIRING DIAGRAM TYPE "K" W/O PROTECTOR		REF		
		.XXXX	±.0005	MAT'L.		FMF		
NO.	REVISION	BY & DATE	CHK	ANG	±1/2'	FINISH	PREV	
THIS DRAWING IN DESIGN AND DETAIL IS OUR PROPERTY AND MUST NOT BE USED EXCEPT IN CONNECTION WITH OUR WORK ALL RIGHTS OF DESIGN AND INVENTION ARE RESERVED THIS IS AN ELECTRONICALLY GENERATED DOCUMENT - DO NOT SCALE THIS PRINT			RFP	CAD FILE 00531403		SIZE	DRAWING NO.	REV.
			DIST			A	005314-03ME	

CERTIFICATION DATA SHEET

Model#: 145TBWD5329 AA WINDING#: K634324 FR 3  
 CONN. DIAGRAM: 005314.03ME ASSEMBLY: F1 ONLY  
 OUTLINE: 028842ME-950

TYPICAL MOTOR PERFORMANCE DATA

HP	KW	SYNC. RPM	F.L. RPM	FRAME	ENCLOSURE	KVA CODE	DESIGN
1 1/2	1.12	1800	1740	145TC	TEFC	J	L

PH	Hz	VOLTS	FL AMPS	START TYPE	DUTY	INSL	S.F	AMB°C	ELEVATION
1	60	115/208-230	14.8/7.8-7.4	ACROSS THE LINE	CONTINUOUS	F4	1.15	40	3300

FULL LOAD EFF: 80	3/4 LOAD EFF: -	1/2 LOAD EFF: -	GTD. EFF	ELEC. TYPE	NO LOAD AMPS
FULL LOAD PF: 82	3/4 LOAD PF: -	1/2 LOAD PF: -	0	CAP START CAP RUN	/

F.L. TORQUE	LOCKED ROTOR AMPS	L.R. TORQUE	B.D. TORQUE	F.L. RISE°C
- LB-FT	/	- LB-FT -	- LB-FT -	-

SOUND PRESSURE @ 3 FT.	SOUND POWER	ROTOR WK^2	MAX. WK^2	SAFE STALL TIME	STARTS /HOUR	APPROX. MOTOR WGT
- dBA	- dBA	0.14 LB-FT^2	- LB-FT^2	- SEC.	-	0 LBS.

\*\*\* SUPPLEMENTAL INFORMATION \*\*\*

DE BRACKET TYPE	ODE BRACKET TYPE	MOUNT TYPE	ORIENTATION	SEVERE DUTY	HAZARDOUS LOCATION	DRIP COVER	SCREENS	PAINT
C-FACE	STANDARD	RIGID	HORIZONTAL	FALSE	NONE	FALSE	NONE	NO PAINT

BEARINGS		GREASE	SHAFT TYPE	SPECIAL DE	SPECIAL ODE	SHAFT MATERIAL	FRAME MATERIAL
DE	OPE	POLYREX EM	T	NONE	NONE	303 STAINLESS (C-501)	STAINLESS STEEL
BALL	BALL						
6205	6203						

THERMO-PROTECTORS				THERMISTORS	CONTROL	SPACE /n HEATERS
THERMOSTATS	PROTECTORS	WDG RTDs	BRG RTDs			
NONE	NOT	NONE	NONE	NONE	FALSE	NONE VOLTS

If Inverter equals NONE, contact factory for further information

INVERTER TORQUE: NONE
INV. HP SPEED RANGE: NONE
ENCODER: NONE
NONE NONE
NONE NONE PPR
BRAKE: NONE NONE
NONE P/N NONE
NONE NONE
NONE FT-LB NONE V NONE Hz

\*  
N  
O  
T  
E  
S  
\*

DATE: 06/23/2017 01:46:27 AM  
 FORM 3531 REV.3 02/07/99  
 \*\* Subject to change without notice.