

PRODUCT INFORMATION PACKET

Model No: 145TTWD16003
Catalog No: N443A
2,3600,TEFC,145TC,3/60/230/460
Washdown Duty



Regal and Marathon are trademarks of Regal Beloit Corporation or one of its affiliated companies.
©2018 Regal Beloit Corporation, All Rights Reserved. MC017097E



Nameplate Specifications

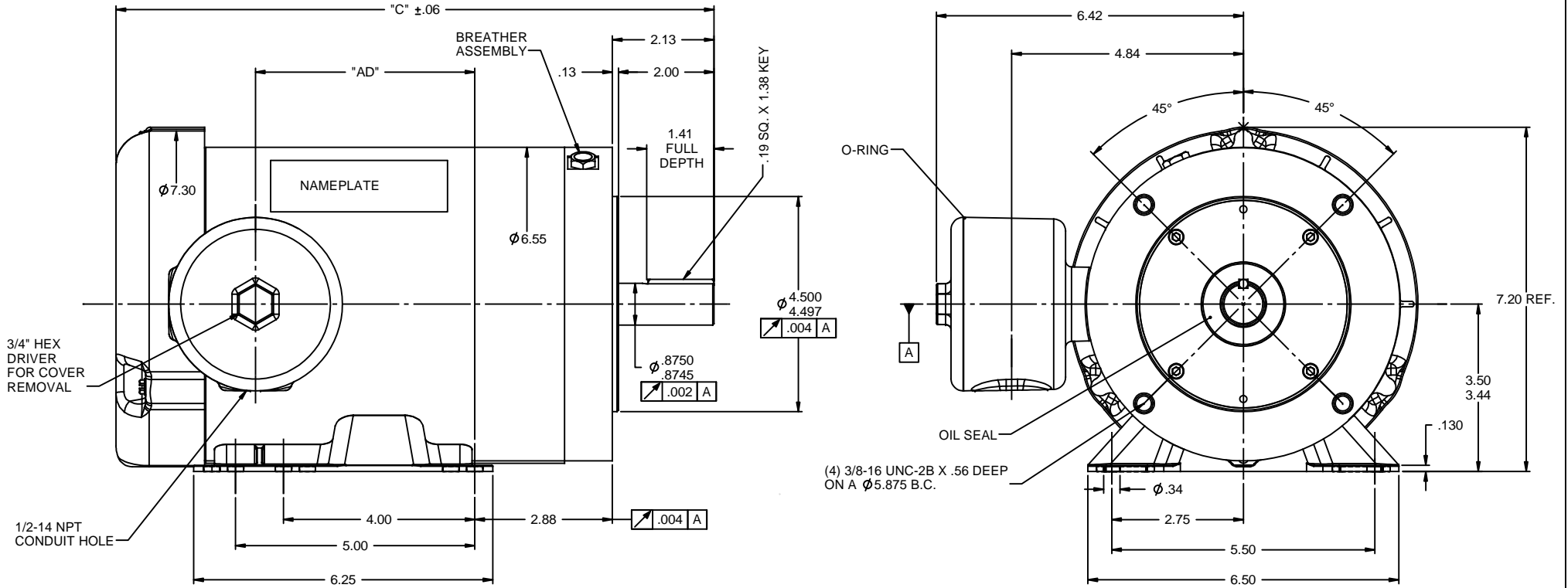
Output HP	2 Hp	Output KW	1.5 kW
Frequency	60 Hz	Voltage	230/460 V
Current	4.8/2.4 A	Speed	3490 rpm
Service Factor	1.25	Phase	3
Efficiency	85.5 %	Duty	Continuous
Insulation Class	F	Design Code	B
KVA Code	L	Frame	145TC
Enclosure	Totally Enclosed Fan Cooled	Overload Protector	No
Ambient Temperature	40 °C	Drive End Bearing Size	6205
Opp Drive End Bearing Size	6205	UL	Recognized
CSA	Y	CE	Y
IP Code	56		

Technical Specifications

Electrical Type	Squirrel Cage Inverter Rated	Starting Method	Line Or Inverter
Poles	2	Rotation	Reversible
Mounting	Rigid base	Motor Orientation	Horizontal
Drive End Bearing	Ball	Opp Drive End Bearing	Ball
Frame Material	Stainless Steel	Shaft Type	T
Overall Length	12.75 in	Frame Length	7.75 in
Shaft Diameter	0.875 in	Shaft Extension	2.13 in
Assembly/Box Mounting	F1 Only		
Outline Drawing	028929ME-775	Connection Diagram	005010.01ME

This is an uncontrolled document once printed or downloaded and is subject to change without notice. Date Created: 06/29/2018

RBC PROPRIETARY AND CONFIDENTIAL INFORMATION
 This document is the property of REGAL BELOIT CORPORATION ("RBC") including its subsidiaries and divisions and contains proprietary information of RBC. This document is loaned on the express condition that neither it nor the information contained therein shall be disclosed to others without the express written consent of RBC, and that the information shall be used by the recipient only as approved expressly by RBC. This document shall be returned to RBC upon its request. This document may be subject to certain restrictions under U.S. export control laws and regulations.



DASH NO.	"C"	"AD"
750	12.50	4.60
775	12.75	4.85
800	13.00	5.10
825	13.25	5.35
850	13.50	5.60

		TOLERANCES UNLESS SPECIFIED:				DRAWN VS 5/7/2011	
		DEC INCHES				CHK	
		X ±.1				APPR	
		.XX ±.03				SCALE 1:2	
		.XXX ±.005		TITLE OUTLINE 140T FRAME		REF 028929	
		.XXX ±.0005		MAT'L		FMF	
NO		REVISION		BY & DATE		PAGE OF	
		THIRD ANGLE PROJECTION		CHK ANG ±1/2"		FINISH	
				RFP		PREV	
				NETWORK FILE NAME 028929ME		SIZE DRAWING NO	
						B 028929ME	
						REV	

VIEW FROM OUTSIDE OF MOTOR AT SWITCH END.



VOLTAGE	L1	L2	L3	JOIN & INSULATE
HIGH	T1	T2	T3	(T4,T7) (T5,T8) (T6,T9)
LOW	T1,T7	T2,T8	T3,T9	T4,T5,T6

		TOLERANCES UNLESS SPECIFIED		DRAWN RDW 04/12/02						
		DEC.	INCHES	CHK						
		.X	±.1	APPD						
		.XX	±.01	SCALE 1=1						
		.XXX	±.005	REF FIG.2-51						
		.XXXX	±.0005	FMF						
NO.	REVISION	BY & DATE	CHK	ANG	±1/2'	FINISH	MARATHON ELECTRIC		PREV	
						TITLE	EXTERNAL WIRING DIAGRAM 3 PHASE W/O PROTECTOR			
						MAT'L.	DECAL - 004014			
			RFP	04/12/02		CAD FILE	00501001ME		SIZE	
THIS DRAWING IN DESIGN AND DETAIL IS OUR PROPERTY AND MUST NOT BE USED EXCEPT IN CONNECTION WITH OUR WORK ALL RIGHTS OF DESIGN AND INVENTION ARE RESERVED THIS IS AN ELECTRONICALLY GENERATED DOCUMENT - DO NOT SCALE THIS PRINT						DIST			DRAWING NO.	REV.
									A	005010-01ME

CERTIFICATION DATA SHEET

Model#: 145TTWD16003 AA WINDING#: T632174 FR 3
 CONN. DIAGRAM: 005010.01ME ASSEMBLY: F1 ONLY
 OUTLINE: 028929ME-775

TYPICAL MOTOR PERFORMANCE DATA

HP	KW	SYNC. RPM	F.L. RPM	FRAME	ENCLOSURE	KVA CODE	DESIGN
2&2	1.49&1.49	3600	3490&2900	145TC	TEFC	L	B

PH	Hz	VOLTS	FL AMPS	START TYPE	DUTY	INSL	S.F	AMB°C	ELEVATION
3	60/50	230/460#190/ 380	4.8/2.4&5.8/2. 9	LINE OR INVERTER	CONTINUOU S	F4	1.25/1.25	40	3300

FULL LOAD EFF: 85.5&91.7	3/4 LOAD EFF: 86.7	1/2 LOAD EFF: 85.5	GTD. EFF	ELEC. TYPE	NO LOAD AMPS
FULL LOAD PF: 88&86	3/4 LOAD PF: 82.1	1/2 LOAD PF: 72.2	0	SQ CAGE INV RATED	1.9 / 1

F.L. TORQUE	LOCKED ROTOR AMPS	L.R. TORQUE	B.D. TORQUE	F.L. RISE°C
3 LB-FT	52 / 26	10.8 LB-FT 360	13 LB-FT 433	0

SOUND PRESSURE @ 3 FT.	SOUND POWER	ROTOR WK^2	MAX. WK^2	SAFE STALL TIME	STARTS /HOUR	APPROX. MOTOR WGT
0 dBA	10 dBA	0.08 LB-FT^2	0.1 LB-FT^2	10 SEC.	0	0 LBS.

***** SUPPLEMENTAL INFORMATION *****

DE BRACKET TYPE	ODE BRACKET TYPE	MOUNT TYPE	ORIENTATION	SEVERE DUTY	HAZARDOUS LOCATION	DRIP COVER	SCREENS	PAINT
C-FACE	STANDARD	RIGID	HORIZONTAL	FALSE	NONE	FALSE	NONE	NO PAINT

BEARINGS		GREASE	SHAFT TYPE	SPECIAL DE	SPECIAL ODE	SHAFT MATERIAL	FRAME MATERIAL
DE	OPE	POLYREX EM	T	NONE	NONE	303 STAINLESS (C-501)	STAINLESS STEEL
6205	6205						

THERMO-PROTECTORS				THERMISTORS	CONTROL	SPACE /n HEATERS
THERMOSTATS	PROTECTORS	WDG RTDs	BRG RTDs	NONE	FALSE	NONE VOLTS
NONE	NOT	NONE	NONE			

If Inverter equals NONE, contact factory for further information

*
N
O
T
E
S
*

INVERTER TORQUE: CONSTANT 10:1
INV. HP SPEED RANGE: NONE
ENCODER: NONE NONE NONE NONE NONE PPR
BRAKE: NONE NONE NONE P/N NONE NONE NONE NONE FT-LB NONE V NONE Hz

DATE: 06/27/2017 12:26:45 AM
 FORM 3531 REV.3 02/07/99
 ** Subject to change without notice.



Date: 6/19/2017
 Customer:
 Attention:
 Submitted by: FAREEDA DUDEKULA

Submission
 Data @ 460 V

Load	0%	25%	50%	75%	100%	115%	125%	LR
Current (Amps)	0.95	1.10	1.54	1.99	2.44	2.72	2.99	26.0
Torque (ft-lb)	0.00	0.75	1.50	2.25	3.0	3.4	3.8	10.8
RPM	3600	3581	3555	3533	3511	3501	3487	0
P.F. (%)	16.8	97.6	85.5	86.7	87.1	87.2	87.3	0.0
		44.6	72.2	82.1	88.4	88.9	89.3	

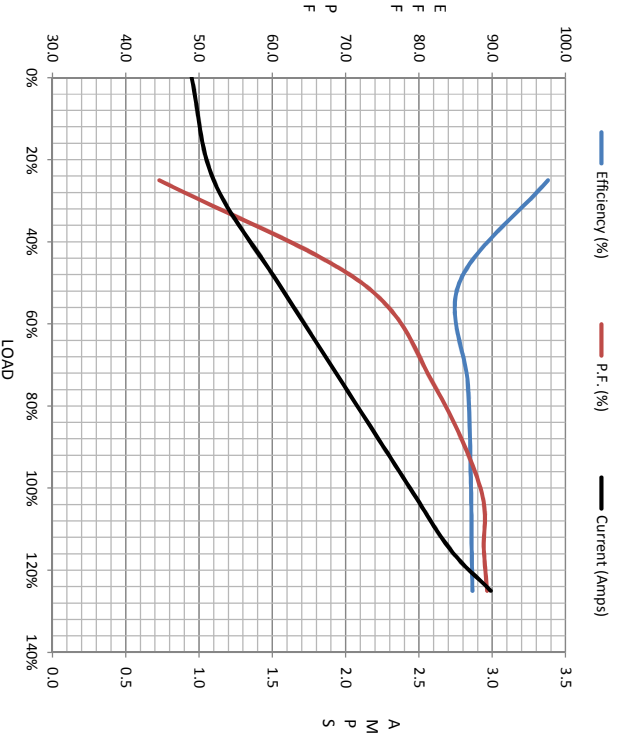
Motor Speed Data

	LR	Pull-Up	BD	Rated	Idle
Speed (rpm)	0	200	2300	3511	3600
Current (Amps)	26.0	23.9	15.6	2.44	0.95
Torque (ft-lb)	10.8	10.5	13.0	3.0	0.00

Information Block

HP	2.0
Sync. RPM	3600
Frame	140
Enclosure	TEFC
Construction	TFR
Voltage	30/460#190/38 V
Frequency	60 HZ
Design	A
LR Code letter	L
Service Factor	1.15
Temp Rise @ FL	46 °C
Duty	CONT
Ambient	40 °C
Elevation	1,000 feet
Rotor/Shaft wkt	0.08 Lb-Fe
Rel Wdg	T692174 FR
Sound Pressure @ 1M	0 dBA
VFD Rating	CONSTANT 10:1
Outline Dwg	028929ME-7/5
Conn. Diag	00501001ME
Additional Specifications:	
0	

EQUIV CKT (OHMS / PHASE)					
R1	R2	X1	X2	Xm	
0.0000	0.0000	0.0000	0.0000	0.0000	



Speed -Torque Curve

