

PRODUCT INFORMATION PACKET

Model No: 056B17D11020
Catalog No: E253A
0.33,1800,DP,56,1/60/120/240
Open Drip Proof (ODP)



Regal and Marathon are trademarks of Regal Beloit Corporation or one of its affiliated companies.
©2018 Regal Beloit Corporation, All Rights Reserved. MC017097E





Nameplate Specifications

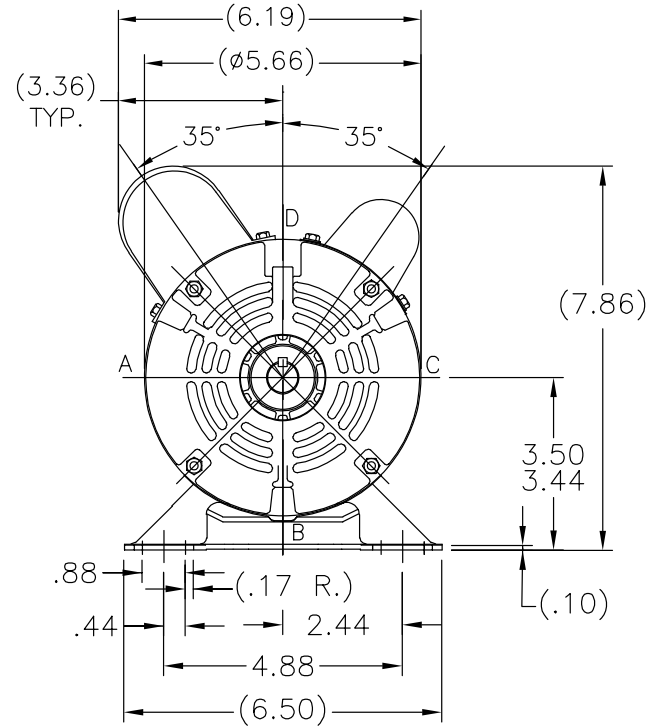
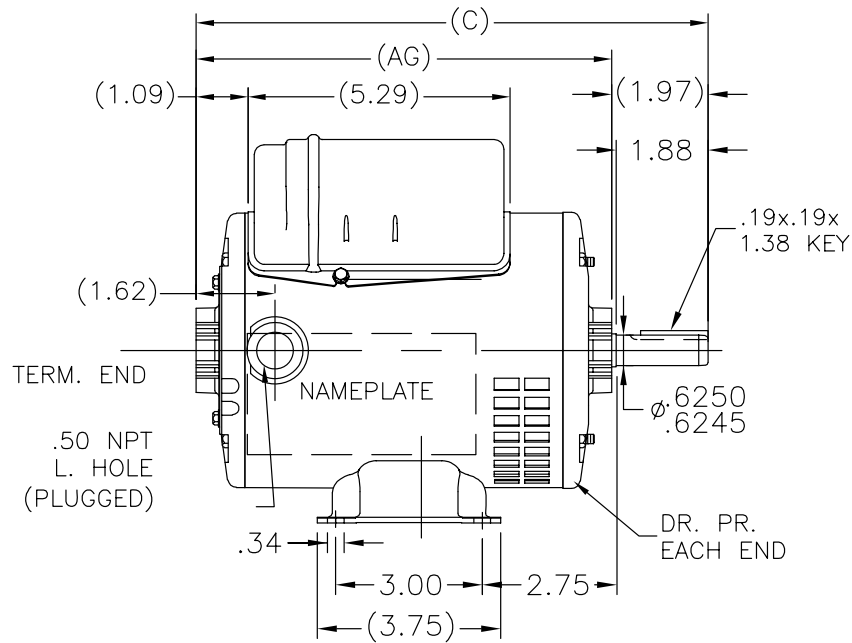
| | | | |
|----------------------------|-------------------|------------------------|-------------------|
| Output HP | 0.33 Hp | Output KW | 0.25 kW |
| Frequency | 60 Hz | Voltage | 120/240 V |
| Current | 3.7/1.8 A | Speed | 1725 rpm |
| Service Factor | 1.35 | Phase | 1 |
| Efficiency | 72.4 % | Duty | Continuous |
| Insulation Class | B | Design Code | N |
| KVA Code | L | Frame | 56 |
| Enclosure | Drip Proof | Overload Protector | No |
| Ambient Temperature | 40 °C | Drive End Bearing Size | 6203 |
| Opp Drive End Bearing Size | 6203 | UL | Recognized |
| CSA | Y | CE | Y |
| IP Code | 22 | | |

Technical Specifications


| | | | |
|-----------------------|--------------------------------------|-----------------------|-----------------------------------|
| Electrical Type | Capacitor Start Capacitor Run | Starting Method | Across The Line |
| Poles | 4 | Rotation | Selective Counterclockwise |
| Mounting | Rigid base | Motor Orientation | Horizontal |
| Drive End Bearing | Ball | Opp Drive End Bearing | Ball |
| Frame Material | Rolled Steel | Shaft Type | NEMA 56 |
| Overall Length | 10.97 in | Frame Length | 7.00 in |
| Shaft Diameter | 0.625 in | Shaft Extension | 1.97 in |
| Assembly/Box Mounting | F1 Only | | |
| Outline Drawing | A-SS404114-700 | Connection Diagram | A-EE9002J-REGAL |

This is an uncontrolled document once printed or downloaded and is subject to change without notice. Date Created: 07/02/2018

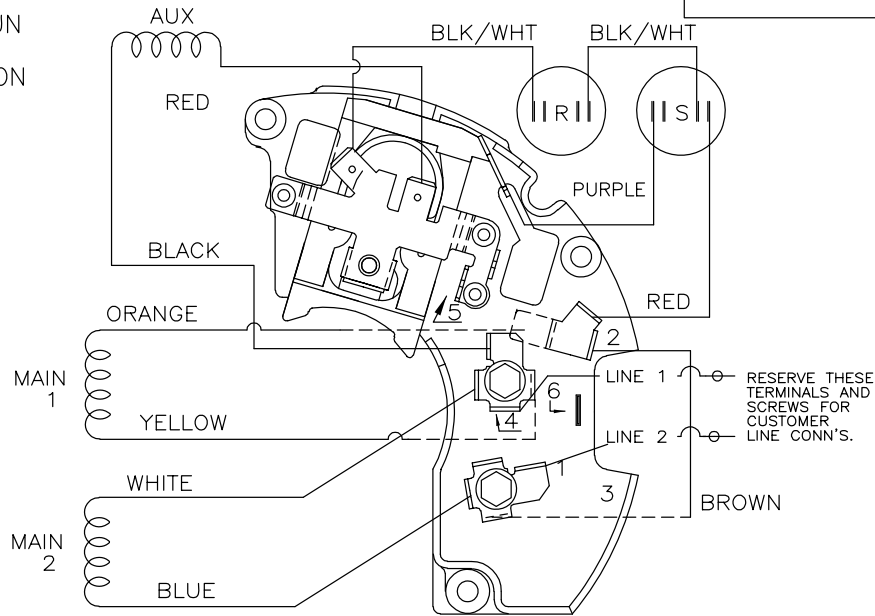
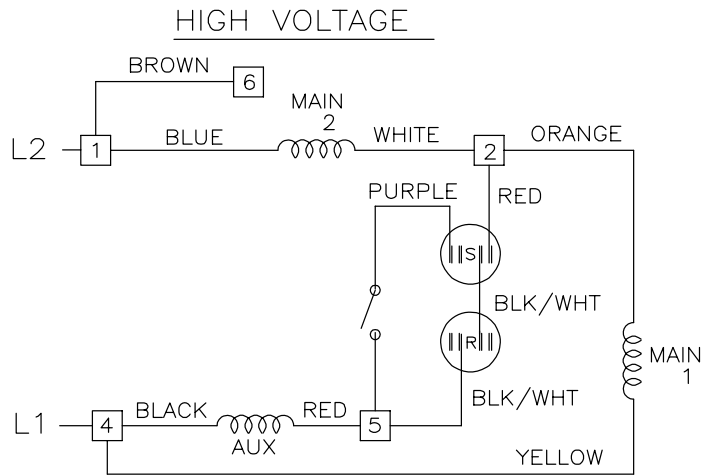
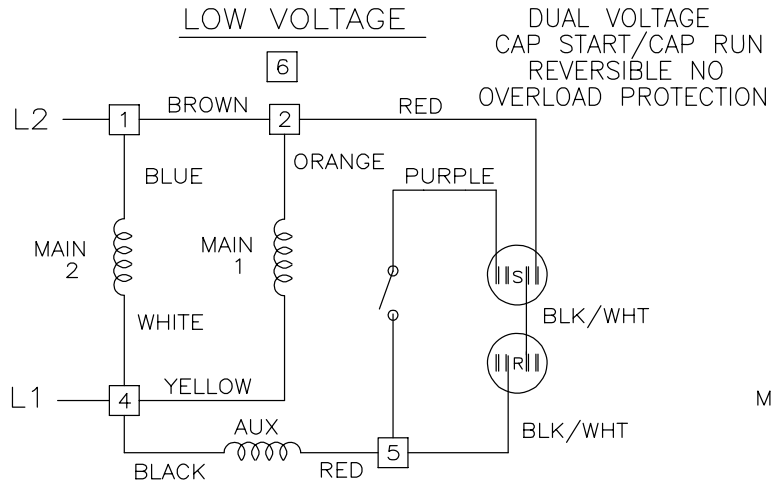
SS404114



| DASH | C | AG | DASH | C | AG |
|------|-------|------|------|-------|-------|
| 625 | 10.22 | 8.25 | 725 | 11.22 | 9.25 |
| 650 | 10.47 | 8.50 | 750 | 11.47 | 9.50 |
| 675 | 10.72 | 8.75 | 775 | 11.72 | 9.75 |
| 700 | 10.97 | 9.00 | 800 | 11.97 | 10.00 |

| | | TOLERANCES UNLESS SPECIFIED | |  Regal Beloit America, Inc. | DRAWN JAH 11/21/2014 | |
|----------------------------------------------------------------------------------------------------------------------------------------------------------------------------------------------------------------------------------|---------------------|-----------------------------|------------|------------------------------------------------------------------------------------------------------------------------|----------------------|-----------------------------------|
| | | DEC. | INCHES | | CHK | AB 11/21/2014 |
| | | .X | ±.1 | | APPD | |
| | | .XX | ±.03 | TITLE OUTLINE | | SCALE 1:1 |
| | | .XXX | ±.005 | 48 FRAME | | REF SS404113/SS75609 |
| A | CREATED NEW DRAWING | JAH | 11/21/2014 | AB | .XXXX ±.0005 | MAT'L. |
| NO. | REVISION | BY & DATE | | CHK | ANG ±7'30" | FINISH |
| THIS DRAWING IN DESIGN AND DETAIL IS OUR PROPERTY AND MUST NOT BE USED EXCEPT IN CONNECTION WITH OUR WORK ALL RIGHTS OF DESIGN AND INVENTION ARE RESERVED THIS IS AN ELECTRONICALLY GENERATED DOCUMENT - DO NOT SCALE THIS PRINT | | | | RFP | CAD FILE SS404114 | SIZE DRAWING NO. PAGE 1 OF 1 REV. |
| | | | | DIST WP | | A SS404114 A |

EE9002J



VIEWING TERM END

LOW VOLTAGE CCW ROTATION SHOWN.

FOR HIGH VOLTAGE
CONNECT BROWN TERM 2 TO TERM 6.
CONNECT WHITE TERM 4 TO TERM 2.

TO REVERSE ROTATION EITHER
VOLTAGE INTERCHANGE RED
LEAD WITH BLACK LEAD.

DASH LINES INDICATE LEADS CONNECTED
TO MOTOR SIDE OF SWITCH.

| | | TOLERANCES UNLESS SPECIFIED | | | DRAWN SVL 6/17/2013 | |
|-------------------------------------------------------------------------------------------------------------------------------------------------------------------------------------------------------------------------------------|-----------------------------------------------|-----------------------------|------------|----------------------------------------------------------------------------|---------------------|-----------------------------------------|
| | | DEC. | INCHES | | CHK | |
| | | .X | ± - | TITLE CONNECTION DIAGRAM 48 FR. - DUAL VOLTAGE REVERSIBLE | APPD | |
| | | .XX | ± - | | SCALE NTS | |
| | | .XXX | ± - | | REF EE9002J | |
| 2 | TEMPLATE LOGO CHNAGED FROM MARATHON TO DAYTON | KR | 05/16/2014 | VS | FMF PR132489 | |
| NO. | REVISION | BY & DATE | CHK | ANG | FINISH | PREV |
| THIS DRAWING IN DESIGN AND DETAIL IS OUR PROPERTY AND MUST NOT BE USED EXCEPT IN CONNECTION WITH OUR WORK ALL RIGHTS OF DESIGN AND INVENTION ARE RESERVED THIS IS AN ELECTRONICALLY GENERATED DOCUMENT - DO NOT SCALE THIS PRINT | | | | RFP | CAD FILE ee9002j | SIZE A |
| | | | | DIST | | DRAWING NO. PAGE 1 OF 2 REV. EE9002J 02 |

