

# PRODUCT INFORMATION PACKET

Model No: 056B34F5332  
Catalog No: T017  
1-1/2,3450,TEFC,56,1/60/115/208-230  
Power Tools



Regal and Marathon are trademarks of Regal Beloit Corporation or one of its affiliated companies.

©2018 Regal Beloit Corporation, All Rights Reserved. MC017097E





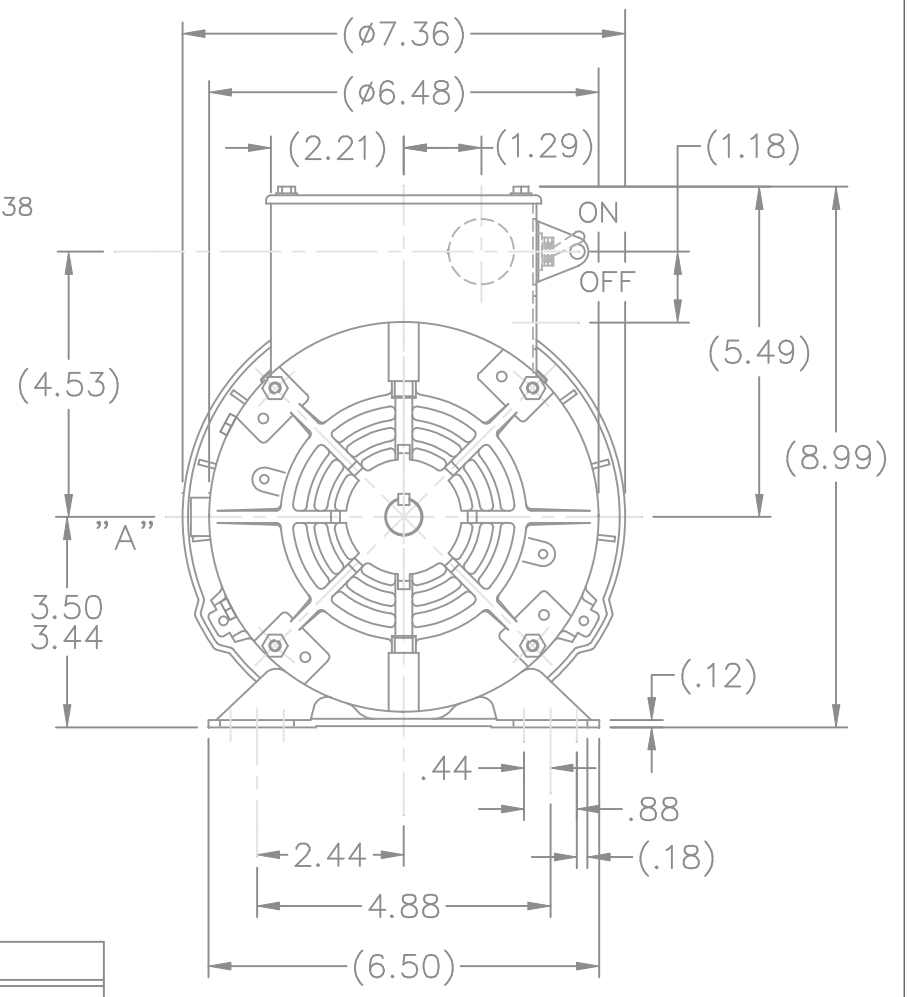
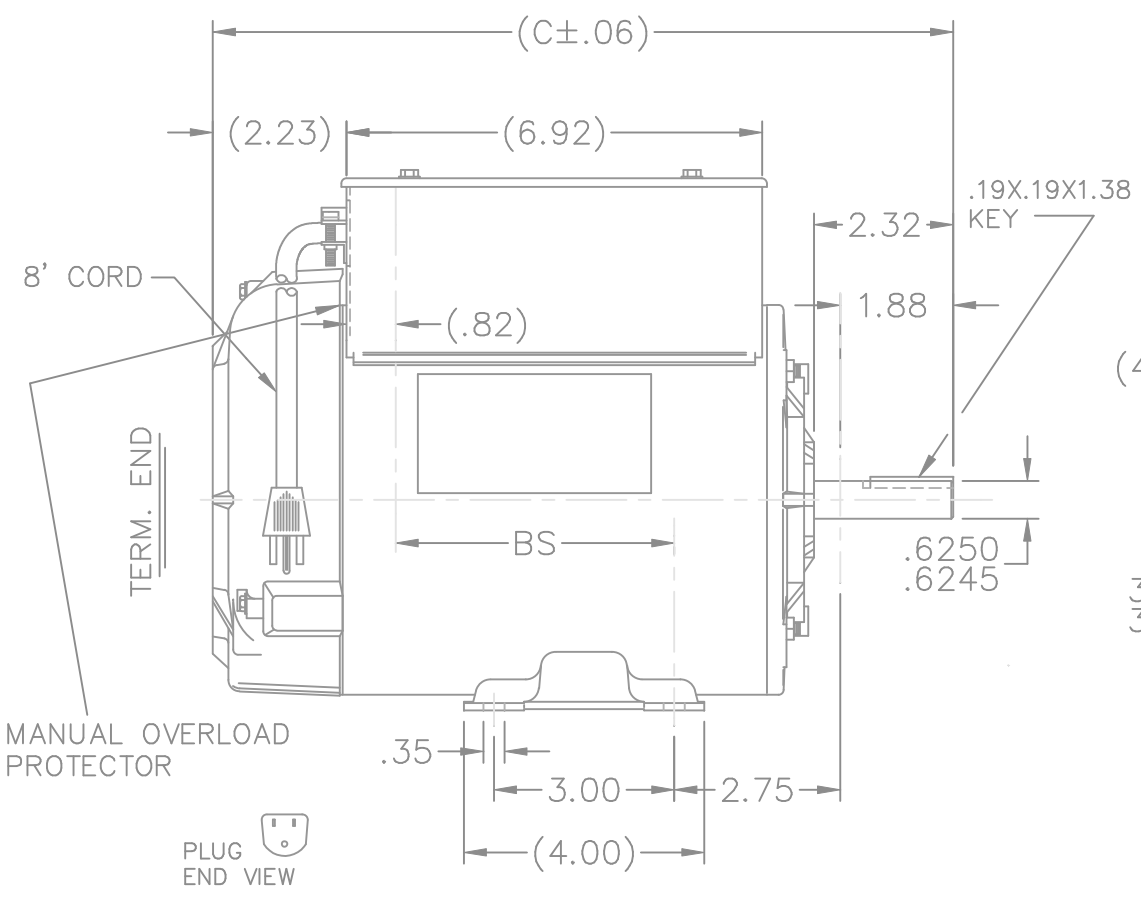
### Nameplate Specifications

Output HP	<b>1.50 Hp</b>	Output KW	<b>1.1 kW</b>
Frequency	<b>60 Hz</b>	Voltage	<b>115/208-230 V</b>
Current	<b>14.2/7.7-7.1 A</b>	Speed	<b>3450 rpm</b>
Service Factor	<b>1.15</b>	Phase	<b>1</b>
Efficiency	<b>78.5 %</b>	Duty	<b>Continuous</b>
Insulation Class	<b>B</b>	Design Code	<b>L</b>
KVA Code	<b>H</b>	Frame	<b>56</b>
Enclosure	<b>Totally Enclosed Fan Cooled</b>	Overload Protector	<b>Manual</b>
Ambient Temperature	<b>40 °C</b>	Drive End Bearing Size	<b>6203</b>
Opp Drive End Bearing Size	<b>6203</b>	UL	<b>Recognized ( Not Protector)</b>
CSA	<b>Y</b>	CE	<b>N</b>
IP Code	<b>43</b>		

### Technical Specifications

Electrical Type	<b>Capacitor Start Capacitor Run</b>	Starting Method	<b>Across The Line</b>
Poles	<b>2</b>	Rotation	<b>Selective Counterclockwise</b>
Mounting	<b>Rigid base</b>	Motor Orientation	<b>Horizontal</b>
Drive End Bearing	<b>Ball</b>	Opp Drive End Bearing	<b>Ball</b>
Frame Material	<b>Rolled Steel</b>	Shaft Type	<b>T</b>
Overall Length	<b>12.82 in</b>	Shaft Diameter	<b>0.625 in</b>
Shaft Extension	<b>1.88 in</b>	Assembly/Box Mounting	<b>F3</b>
Outline Drawing	<b>A-104258-756</b>	Connection Diagram	<b>102006-60</b>

This is an uncontrolled document once printed or downloaded and is subject to change without notice. Date Created: 07/02/2018

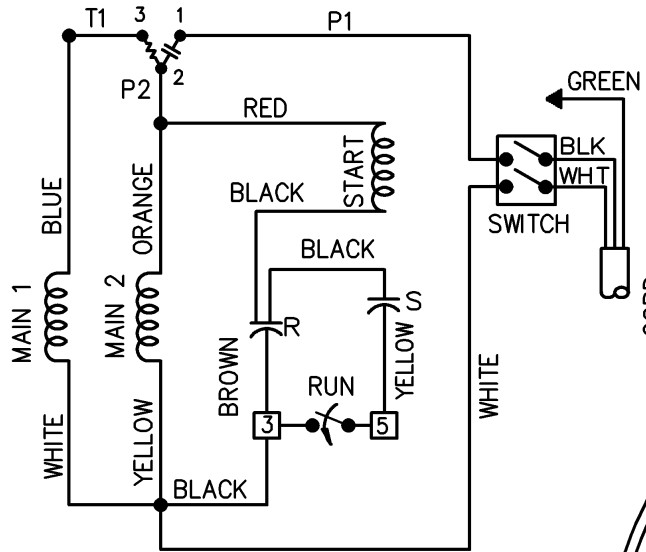


NOTE:  
NAMEPLATE TO BE READ  
FROM LOCATION "A"

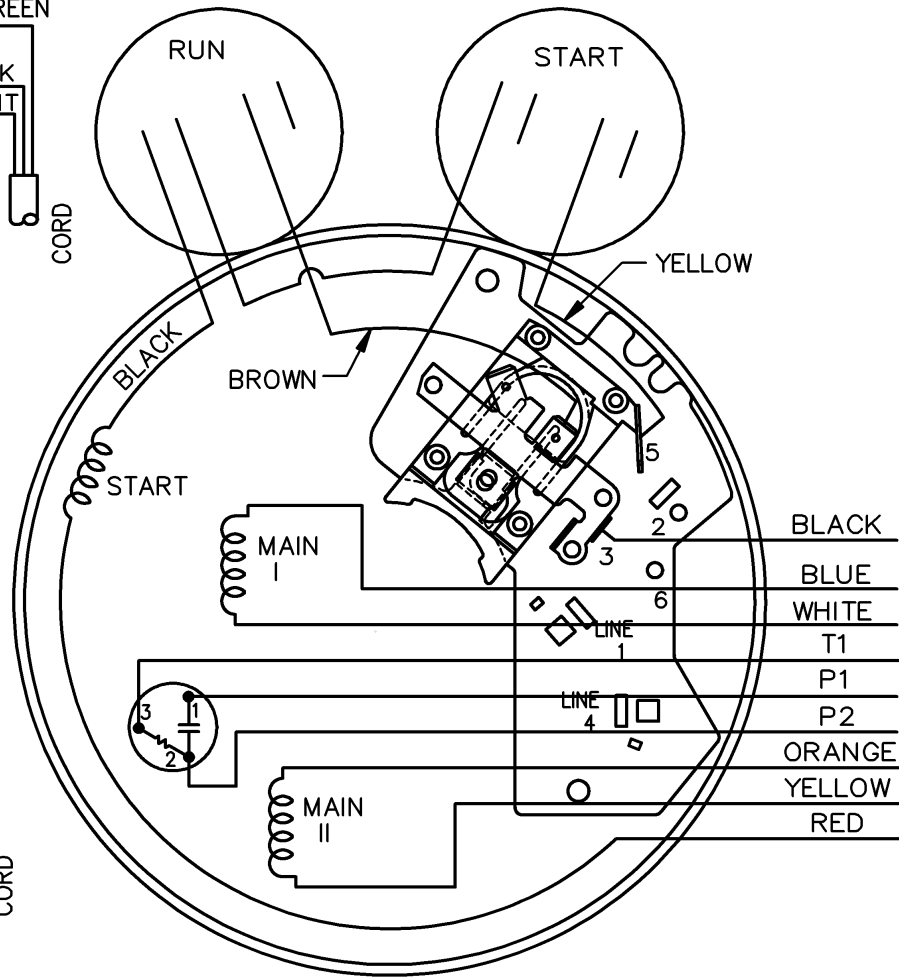
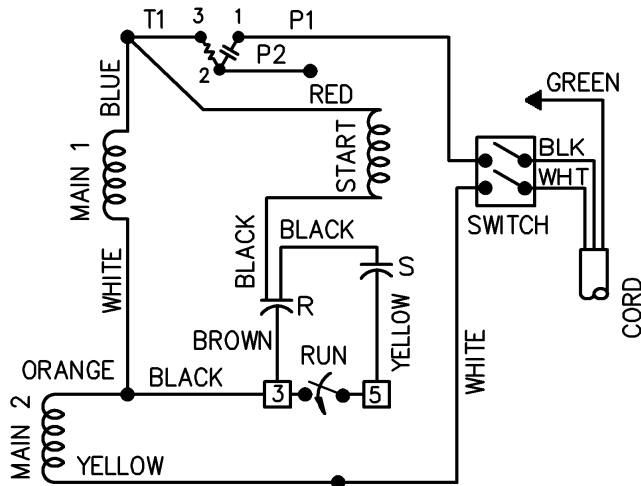
DASH	FRAME	C	BS	DASH	FRAME	C	BS
				806	56-80	13.32	5.64
656	56-65	11.82	4.14	856	56-85	13.82	6.14
706	"-70	12.32	4.64				
756	"-75	12.82	5.14				

				TOLERANCES UNLESS SPECIFIED		MARATHON ELECTRIC	DRAWN PGK 03-05-1997							
				DEC.	INCHES		CHK	ML	SAT	5=16				
				.X	±.1	TITLE OUTLINE 56 FR. - BB - TEFC - 1ø								
				.XX	±.03									
2	REMOVED KNOCKOUTS ON C' BOX			TAT	04-26-2004	ML	.XXX	±.005						
1	NEW DRAWING			MU13686	PGK 03-20-1997		.XXXX	±.0005						
NO.	REVISION	BY & DATE	CHK	ANG	±7'30"	FINISH	PREV							
THIS DRAWING IN DESIGN AND DETAIL IS OUR PROPERTY AND MUST NOT BE USED EXCEPT IN CONNECTION WITH OUR WORK ALL RIGHTS OF DESIGN AND INVENTION ARE RESERVED THIS IS AN ELECTRONICALLY GENERATED DOCUMENT - DO NOT SCALE THIS PRINT						RFP	CAD FILE 104258			SIZE	DRAWING NO.	PAGE	OF	REV.
						DIST	WP	A	104258				2	

LOW VOLTAGE C.C.W.



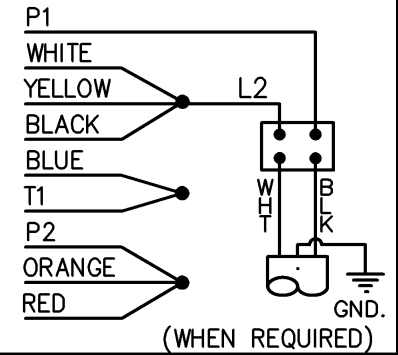
HIGH VOLTAGE C.C.W.



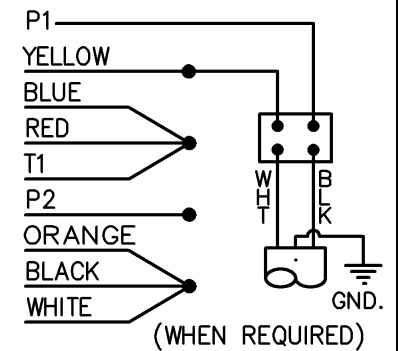
102006-60

DUAL VOLTAGE  
CAP START-CAP RUN  
OVERLOAD  
SELECT ROTATION

LOW VOLT. CCW ROT.



HIGH VOLT. CCW ROT.



FOR CW ROT. EITHER  
VOLTAGE INTERCHANGE  
RED WITH BLACK LEAD.

				TOLERANCES UNLESS SPECIFIED			DRAWN DD 04-20-1994		
				DEC.	INCHES		CHK ML 04-21-1994		
				X	±.1		APPD MB 04-26-1994		
03	ADDED (WHEN REQUIRED TO CORD)	MU29193	CAV 02-25-2000	.XX	±.02	TITLE CONNECTION DIAGRAM	SCALE 5=8		
02	CAP LEAD COLORS REV'D	CN 16210	MRB 11-16-1994	.XXX	±.005		REF		
01	NEW DRAWING	4138426	DD 05-02-1994	.XXXX	±.0005	MAT'L	FMF		
NO.	REVISION		BY & DATE	CHK	ANG ±7'30"	FINISH	PREV		
THIS DRAWING IN DESIGN AND DETAIL IS OUR PROPERTY AND MUST NOT BE USED EXCEPT IN CONNECTION WITH OUR WORK ALL RIGHTS OF DESIGN AND INVENTION ARE RESERVED THIS IS AN ELECTRONICALLY GENERATED DOCUMENT - DO NOT SCALE THIS PRINT				RFP		CAD FILE 10200660	SIZE A	DRAWING NO. 102006-60	PAGE OF 03
				DIST	WP				

CERTIFICATION DATA SHEET

Model#: 56B34F5332 D WINDING#: ZB216 NONE 3  
 CONN. DIAGRAM: 102006-60 ASSEMBLY: F3  
 OUTLINE: A-104258-756

TYPICAL MOTOR PERFORMANCE DATA

HP	KW	SYNC. RPM	F.L. RPM	FRAME	ENCLOSURE	KVA CODE	DESIGN
1 1/2	1.12	3600	3450	56	TEFC	H	L

PH	Hz	VOLTS	FL AMPS	START TYPE	DUTY	INSL	S.F	AMB°C	ELEVATION
1	60	115/208-230	14.2/7.7-7.1	ACROSS THE LINE	CONTINUOUS	B3	1.15	40	3300

FULL LOAD EFF: -	3/4 LOAD EFF: 72.5	1/2 LOAD EFF: 68	GTD. EFF	ELEC. TYPE	NO LOAD AMPS
FULL LOAD PF: -	3/4 LOAD PF: 85.5	1/2 LOAD PF: 78.5	0	CAP START CAP RUN	5.2 / 2.6

F.L. TORQUE	LOCKED ROTOR AMPS	L.R. TORQUE	B.D. TORQUE	F.L. RISE°C
2.24 LB-FT	96 / 48	5.2 LB-FT 0	6 LB-FT 0	-

SOUND PRESSURE @ 3 FT.	SOUND POWER	ROTOR WK^2	MAX. WK^2	SAFE STALL TIME	STARTS /HOUR	APPROX. MOTOR WGT
0 dBA	10 dBA	0 LB-FT^2	4.2 LB-FT^2	10 SEC.	0	0 LBS.

\*\*\* SUPPLEMENTAL INFORMATION \*\*\*

DE BRACKET TYPE	ODE BRACKET TYPE	MOUNT TYPE	ORIENTATION	SEVERE DUTY	HAZARDOUS LOCATION	DRIP COVER	SCREENS	PAINT
STANDARD	BRAKE	RIGID	HORIZONTAL	FALSE	NONE	FALSE	NONE	GRAY (POWDER)

BEARINGS		GREASE	SHAFT TYPE	SPECIAL DE	SPECIAL ODE	SHAFT MATERIAL	FRAME MATERIAL
DE	OPE						
BALL	BALL	POLYREX EM	T	NONE	NONE	1144 STRESSPROOF (C-223)	ROLLED STEEL
6203	6203						

THERMO-PROTECTORS				THERMISTORS	CONTROL	SPACE /n HEATERS
THERMOSTATS	PROTECTORS	WDG RTDs	BRG RTDs			
NONE	MANUAL	NONE	NONE	NONE	FALSE	NONE VOLTS

If Inverter equals NONE, contact factory for further information

\*  
N  
O  
T  
E  
S  
\*

INVERTER TORQUE: NONE
INV. HP SPEED RANGE: NONE
ENCODER: NONE
NONE NONE
NONE NONE PPR
BRAKE: PROVISIONS FOR KIT NONE
NONE P/N NONE
NONE NONE
NONE FT-LB NONE V NONE Hz

DATE: 06/21/2017 08:14:50 AM  
 FORM 3531 REV.3 02/07/99  
 \*\* Subject to change without notice.