

# PRODUCT INFORMATION PACKET

Model No: 056C17D2064

Catalog No: S033

.5 HP General Purpose Motor, 1 phase, 1800 RPM, 115/230 V, 56 Frame, ODP  
Single Phase ODP Motors



### Nameplate Specifications

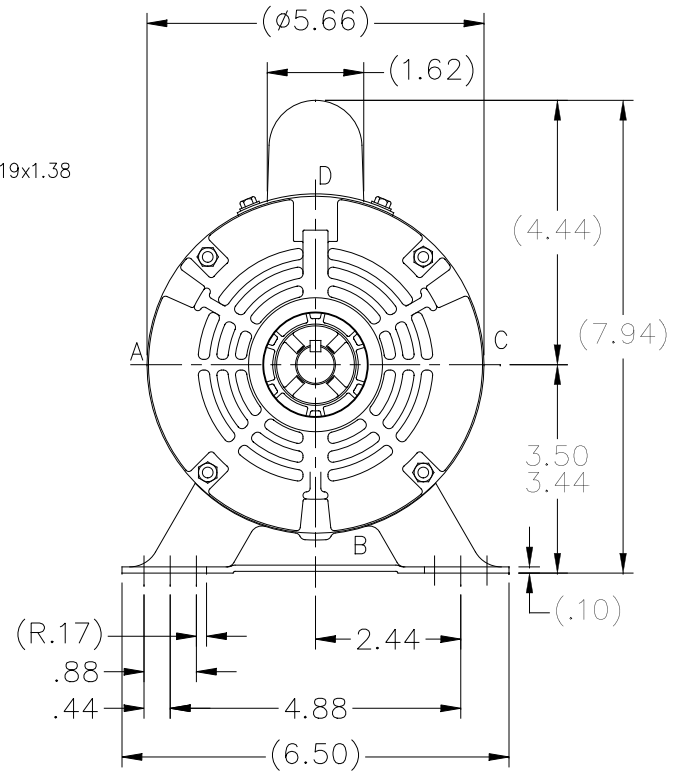
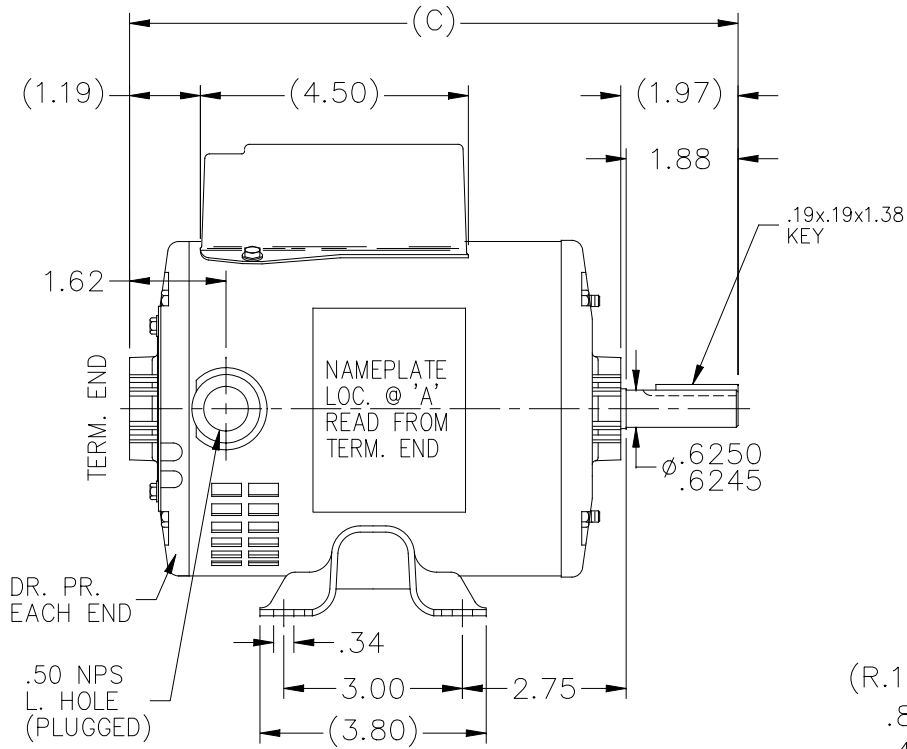
Output HP	.5 Hp	Output KW	.37 kW
Frequency	60 Hz	Voltage	115/230 V
Current	9.05/4.5 A	Speed	1725 rpm
Service Factor	1	Phase	1
Efficiency	60 %	Duty	CONTINUOUS
Insulation Class	B	Design Code	No Design Code
KVA Code	L	Frame	56
Enclosure	DP	Thermal Protection	MANUAL
Ambient Temperature	40 °C	Drive End Bearing Size	6203
Opp Drive End Bearing Size	6203	UL	Recognized
CSA	Y	CE	N
IP Code	22		

### Technical Specifications

Electrical Type	CAP START IND RUN	Starting Method	ACROSS THE LINE
Poles	4	Rotation	SELECTIVE CCW
Mounting	RIGID	Motor Orientation	HORIZONTAL
Drive End Bearing	BALL	Opp Drive End Bearing	BALL
Frame Material	ROLLED STEEL	Shaft Type	STANDARD 56
Overall Length	10.22 in	Frame Length	6.25 in
Shaft Diameter	.63 in	Shaft Extension	1.97 in
Assembly/Box Mounting	F1 Only		

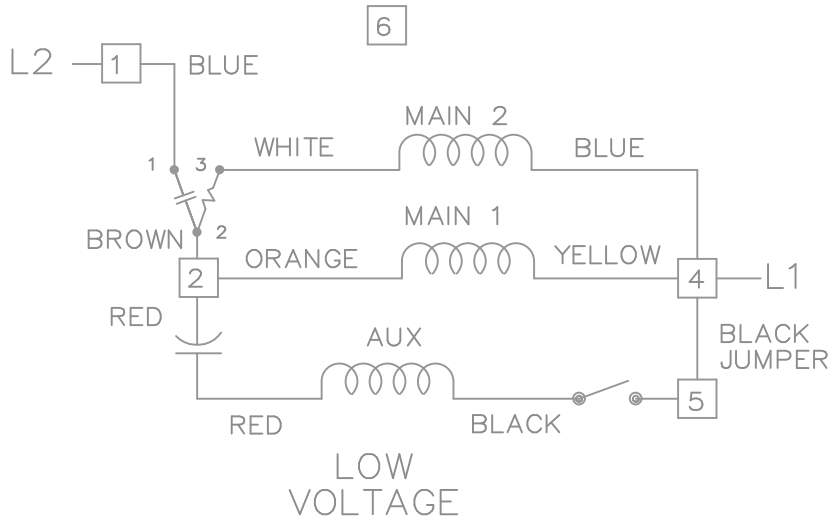
This is an uncontrolled document once printed or downloaded and is subject to change without notice. Date Created:01/11/2019

SS79614

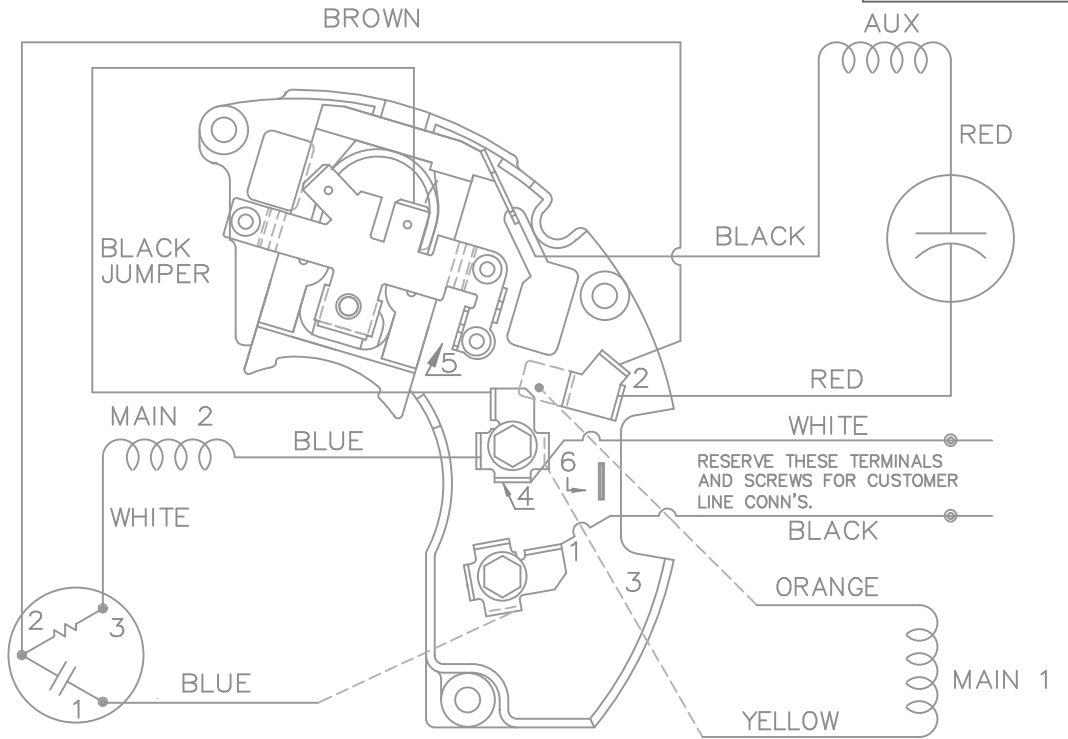


DASH	C
625	10.22
650	10.47
725	11.22

		TOLERANCES UNLESS SPECIFIED		MARATHON ELECTRIC	DRAWN MRB 3/10/1998		
		DEC.	INCHES		CHK ML 4/1/1998	APPD GK 4/1/1998	
7	REMOVED FRAME SIZE COLUMN IN TABLE	AP	11/9/16	.XX	±.03	SCALE 3=8	
6	UPDATED DRAWING	TJW	05/11/2007	.XXX	±.005	REF	
5	REDRAWN ON CADD - NO CHANGE	MRB	4/1/1998	.XXXX	±.0005	FMF	
NO.	REVISION	BY & DATE	CHK ANG	±7'30"	FINISH	PREV	
THIS DRAWING IN DESIGN AND DETAIL IS OUR PROPERTY AND MUST NOT BE USED EXCEPT IN CONNECTION WITH OUR WORK ALL RIGHTS OF DESIGN AND INVENTION ARE RESERVED THIS IS AN ELECTRONICALLY GENERATED DOCUMENT - DO NOT SCALE THIS PRINT				RFP	CAD FILE SS79614	SIZE A	DRAWING NO. PAGE 1 OF 1 REV. SS79614 7
				DIST WP			

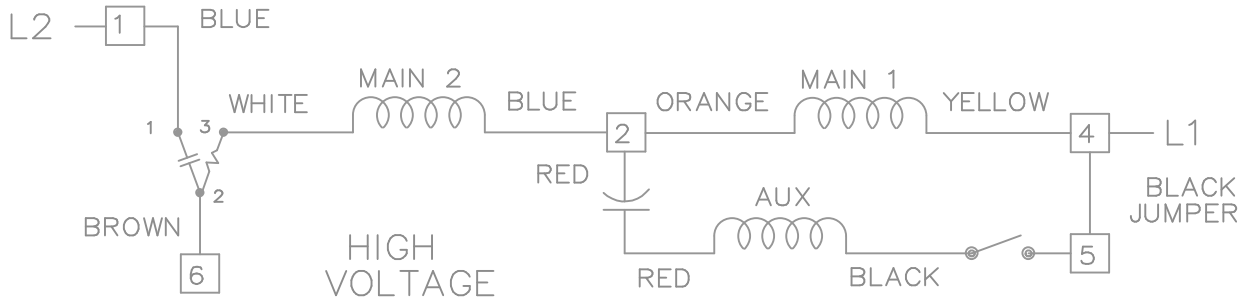


DUAL VOLTAGE CAPACITOR START REVERSIBLE ON TERM BOARD WITH OVERLOAD PROTECTION



VIEWING TERM END

LOW VOLTAGE CCW ROTATION SHOWN.



FOR HIGH VOLTAGE CONNECT BROWN TERM 2 TO TERM 6. CONNECT BLUE TERM 4 TO TERM 2.

TO REVERSE ROTATION EITHER VOLTAGE INTERCHANGE RED LEAD WITH BLACK LEAD.

				TOLERANCES UNLESS SPECIFIED		MARATHON ELECTRIC	DRAWN BW 02-22-1990				
				DEC.	INCHES		CHK	ML	02-22-1990		
				.X	± -	TITLE CONNECTION DIAGRAM 48 FR. DUAL VOLTAGE REVERSIBLE	APPD	GK	02-22-1990	SCALE	1=1
3	ROUTING OF BLACK JUMPER	CN 35440	BJK 08-20-2002	.XX	± -		REF				
2	REVISED BLACK LINE LOCATION	CN 6427	RM 01-28-1991	.XXX	± -		FMF				
1	NEW DRAWING		BW 02-22-1990	.XXXX	± -		PREV				
NO.	REVISION	BY & DATE	CHK	ANG	± -	FINISH					
THIS DRAWING IN DESIGN AND DETAIL IS OUR PROPERTY AND MUST NOT BE USED EXCEPT IN CONNECTION WITH OUR WORK ALL RIGHTS OF DESIGN AND INVENTION ARE RESERVED THIS IS AN ELECTRONICALLY GENERATED DOCUMENT - DO NOT SCALE THIS PRINT				RFP	CAD FILE EE9002M		SIZE	DRAWING NO.	PAGE	OF	REV.
				DIST	WP		A	EE9002M		3	

CERTIFICATION DATA SHEET

Model#: 56C17D2064 P WINDING#: CE48452 NONE 3  
 CONN. DIAGRAM: A-EE9002M ASSEMBLY: F1 ONLY  
 OUTLINE: A-SS79614-625

TYPICAL MOTOR PERFORMANCE DATA

HP	KW	SYNC. RPM	F.L. RPM	FRAME	ENCLOSURE	KVA CODE	DESIGN		
1/2	.37	1800	1725	56	DP	L	NO DESIGN CODE		
PH	Hz	VOLTS	FL AMPS	START TYPE	DUTY	INSL	S.F	AMB°C	ELEVATION
1	60	115/230	9.05/4.5	ACROSS THE LINE	CONTINUOUS	B3	1.0	40	3300
FULL LOAD EFF: 60.0	3/4 LOAD EFF: 55.5	1/2 LOAD EFF: 47.3	GTD. EFF		ELEC. TYPE	NO LOAD AMPS			
				-	CAP START IND RUN	7.8 / 3.9			
F.L. TORQUE	LOCKED ROTOR AMPS	L.R. TORQUE	B.D. TORQUE		F.L. RISE°C				
24.1 LB-FT	39 / 19.5	65 LB-FT -	58.5 LB-FT -		-				
SOUND PRESSURE @ 3 FT.	SOUND POWER	ROTOR WK^2	MAX. WK^2	SAFE STALL TIME	STARTS /HOUR	APPROX. MOTOR WGT			
- dBA	- dBA	- LB-FT^2	- LB-FT^2	- SEC.	-	- LBS.			

\*\*\* SUPPLEMENTAL INFORMATION \*\*\*

DE BRACKET TYPE	ODE BRACKET TYPE	MOUNT TYPE	ORIENTATION	SEVERE DUTY	HAZARDOUS LOCATION	DRIP COVER	SCREENS	PAINT
STANDARD	STANDARD	RIGID	HORIZONTAL	FALSE	NONE	FALSE	NONE	GRAY (POWDER)

BEARINGS		GREASE	SHAFT TYPE	SPECIAL DE	SPECIAL ODE	SHAFT MATERIAL	FRAME MATERIAL
DE	OPE						
BALL	BALL	MULTEMP SRL	STANDARD 56	NONE	NONE	1144 STRESSPROOF (C-223)	ROLLED STEEL
6203	6203						

THERMO-PROTECTORS				THERMISTORS	CONTROL	SPACE /n HEATERS
THERMOSTATS	PROTECTORS	WDG RTDs	BRG RTDs			
NONE	MANUAL	NONE	NONE	NONE	FALSE	NONE VOLTS

If Inverter equals NONE, contact factory for further information

INVERTER TORQUE: NONE
INV. HP SPEED RANGE: NONE
ENCODER: NONE
NONE NONE
NONE NONE PPR
BRAKE: NONE NONE
NONE P/N NONE
NONE NONE
NONE FT-LB NONE V NONE Hz

\*  
N  
O  
T  
E  
S  
\*

DATE: 06/27/2017 06:38:47 AM  
 FORM 3531 REV.3 02/07/99  
 \*\* Subject to change without notice.