

PRODUCT INFORMATION PACKET

Model No: 056C34D2108

Catalog No: G232

0.50 HP General Purpose Motor, 1 phase, 3600 RPM, 115/208-230 V, 56C Frame, ODP
Single Phase ODP Motors



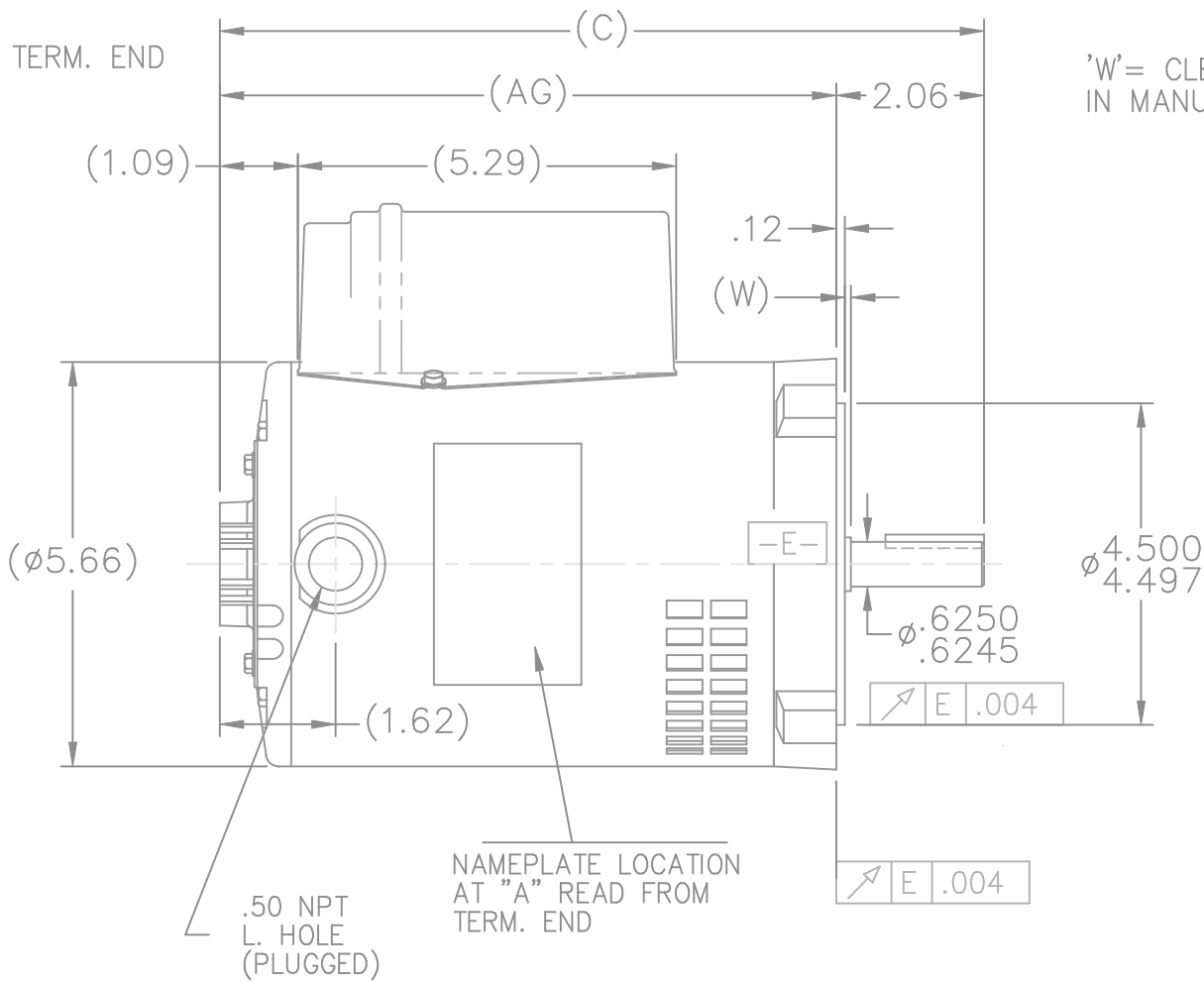
Nameplate Specifications

Output HP	0.50 Hp	Output KW	0.37 kW
Frequency	60 Hz	Voltage	115/208-230 V
Current	8.4/3.8-4.2 A	Speed	3450 rpm
Service Factor	1.25	Phase	1
Efficiency	62 %	Power Factor	64.5
Duty	Continuous	Insulation Class	B
Design Code	NO DESIGN CODE	KVA Code	M
Frame	56C	Enclosure	Drip Proof
Thermal Protection	No	Ambient Temperature	40 °C
Drive End Bearing Size	6203	Opp Drive End Bearing Size	6203
UL	Recognized	CSA	Y
CE	N	IP Code	22

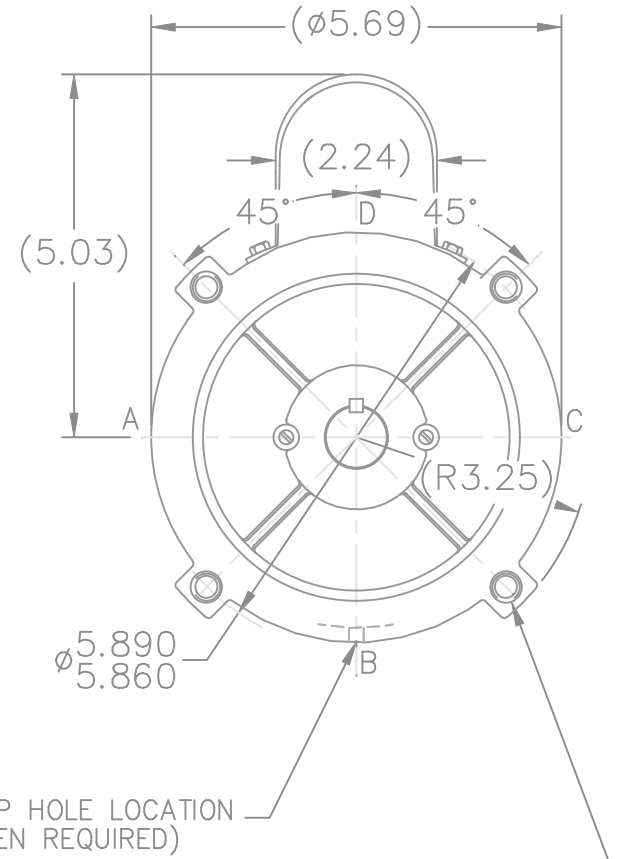
Technical Specifications

Electrical Type	Capacitor Start Induction Run	Starting Method	Across The Line
Poles	2	Rotation	Selective Counterclockwise
Resistance Main	0 Ohms	Mounting	Round
Motor Orientation	Horizontal	Drive End Bearing	Ball
Opp Drive End Bearing	Ball	Frame Material	Rolled Steel
Shaft Type	T	Overall Length	10.69 in
Frame Length	6.75 in	Shaft Diameter	0.625 in
Shaft Extension	1.88 in	Assembly/Box Mounting	F1 ONLY

This is an uncontrolled document once printed or downloaded and is subject to change without notice. Date Created:01/11/2019

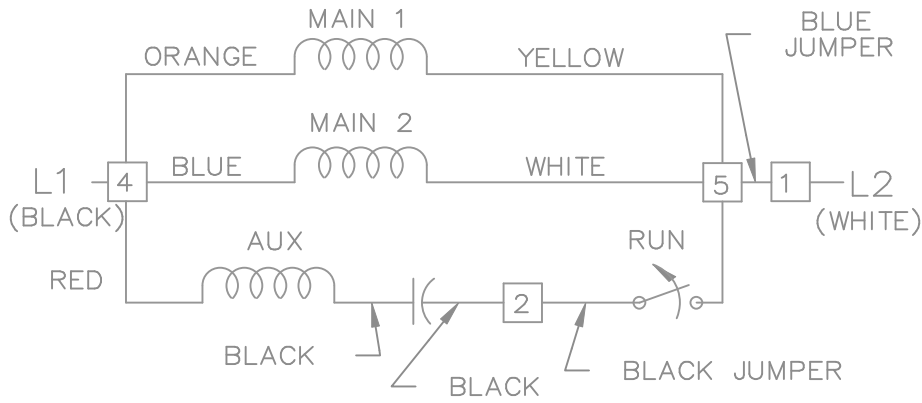


'W' = CLEARANCE ALLOWED FOR ALL VARIANCES IN MANUFACTURING & ASSEMBLY



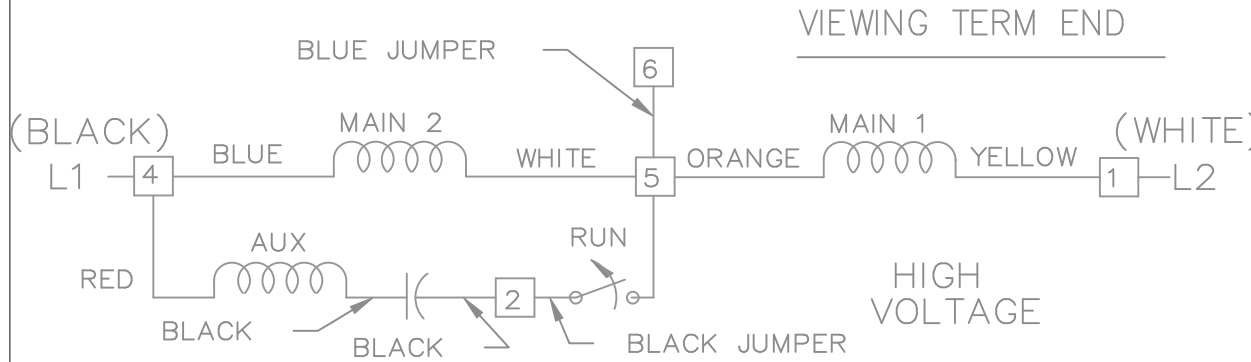
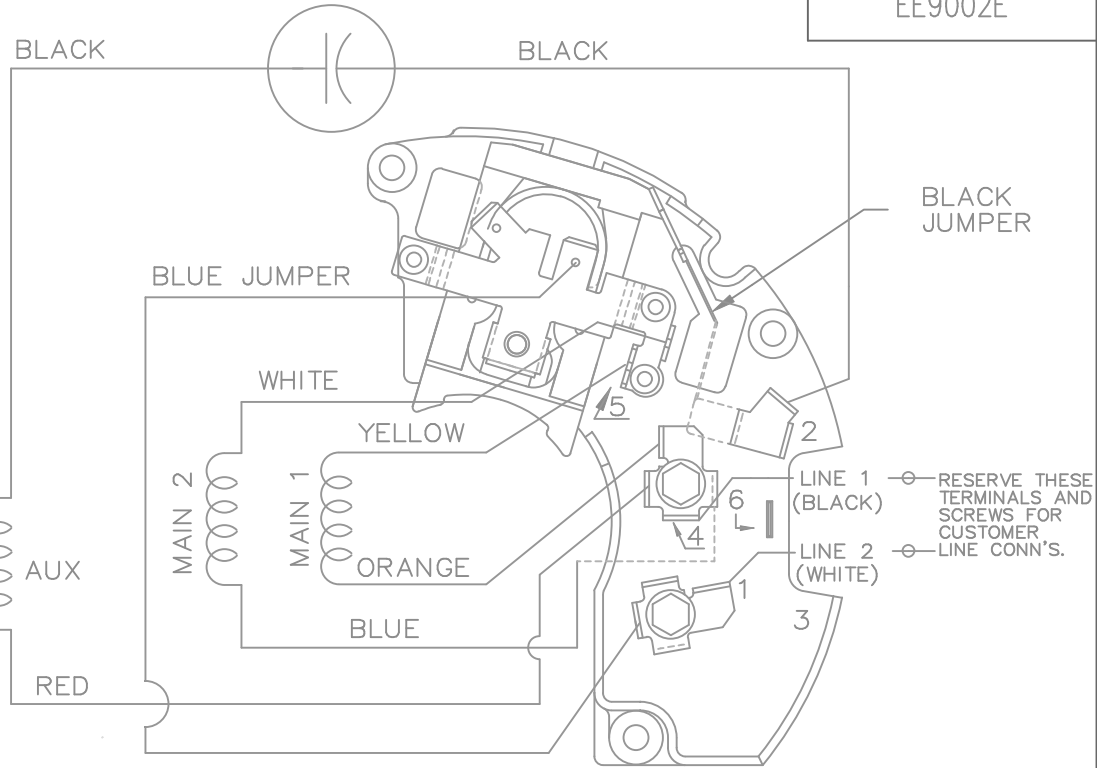
DASH	FR	C	AG		DASH	FR	C	AG	
625	48	10.19	8.12		725	48	11.19	9.13	
675	48	10.69	8.63		775	48	11.69	9.63	
700	48	10.94	8.88		800	48	11.94	9.88	

				TOLERANCES UNLESS SPECIFIED		MARATHON ELECTRIC	DRAWN RM 10/9/1992					
				DEC.	INCHES		CHK	MOL	10/12/1992			
4	UPDATED DRAWING			TJW	05/07/2007	.X	±.1		APPD	RJS	10/14/1992	
3	REV'D WEEP HOLE NOTE CN20750-24			CB	5/18/1995	.XX	±.03		SCALE	3=8		
2	ADDED NEW FRONT BRACKET CN20124			RJM	4/4/1995	.XXX	±.005		REF			
1	NEW DRAWING 3958931			RM	10/15/1992	.XXXX	±.0005		MAT'L.	FMF		
NO.	REVISION			BY & DATE	CHK	ANG	±7'30"		FINISH	PREV		
THIS DRAWING IN DESIGN AND DETAIL IS OUR PROPERTY AND MUST NOT BE USED EXCEPT IN CONNECTION WITH OUR WORK ALL RIGHTS OF DESIGN AND INVENTION ARE RESERVED THIS IS AN ELECTRONICALLY GENERATED DOCUMENT - DO NOT SCALE THIS PRINT					RFP	CAD FILE SS75607			SIZE	DRAWING NO.	PAGE 1 OF 1	REV.
					DIST	WP			A	SS75607		4



LOW VOLTAGE

DUAL VOLTAGE CAPACITOR START REVERSIBLE ON TERM BOARD NO OVERLOAD PROTECTION



HIGH VOLTAGE

VIEWING TERM END

LOW VOLTAGE CCW ROTATION SHOWN

FOR HIGH VOLTAGE:
CONNECT BLUE TERM 1 TO TERM 6,
CONNECT YELLOW TERM 5 TO TERM 1,
CONNECT ORANGE TERM 4 TO TERM 5.

TO REVERSE ROTATION EITHER VOLTAGE INTERCHANGE RED LEAD WITH BLACK LEAD

			TOLERANCES UNLESS SPECIFIED			DRAWN ML 02-02-1988			
NO.	REVISION	BY & DATE	CHK	ANG		SCALE	REF	FMF	PREV
05	COLOURS ADDED TO L1,L2	RP 12/10/2008	DEC.	INCHES	TITLE CONNECTION DIAGRAM 48FR. DUAL VOLTAGE REVERSIBLE	CHK GK 02-15-1988			
04	WHITE LEAD LOCATED UNDER BKY DATE	BLR 09/13/99	.X	±.1		APPD DRN 02-24-1988			
	CODE APPR. 6K AND PRIOR CN 28441		.XX	±.02		SCALE 1=1			
03	REVISED LINE 2 LOCATION CN 6427	RM 01/28/1991	.XXX	±.005		REF EE9002E-LE			
02	ADDED CUSTOMER CONN. NOTE CN 6011	BW 08/03/1989	.XXXX	±.0005		MAT'L			
					FINISH	PREV			
THIS DRAWING IN DESIGN AND DETAIL IS OUR PROPERTY AND MUST NOT BE USED EXCEPT IN CONNECTION WITH OUR WORK ALL RIGHTS OF DESIGN AND INVENTION ARE RESERVED THIS IS AN ELECTRONICALLY GENERATED DOCUMENT - DO NOT SCALE THIS PRINT			RFP		CAD FILE EE9002E	SIZE A	DRAWING NO. EE9002E	PAGE OF	REV. 05
			DIST	WP					