

# PRODUCT INFORMATION PACKET

Model No: 184TBDR5301  
Catalog No: Z504  
5,3600,DP,184T,1/60/230  
Air Compressor



Regal and Marathon are trademarks of Regal Beloit Corporation or one of its affiliated companies.  
©2018 Regal Beloit Corporation, All Rights Reserved. MC017097E





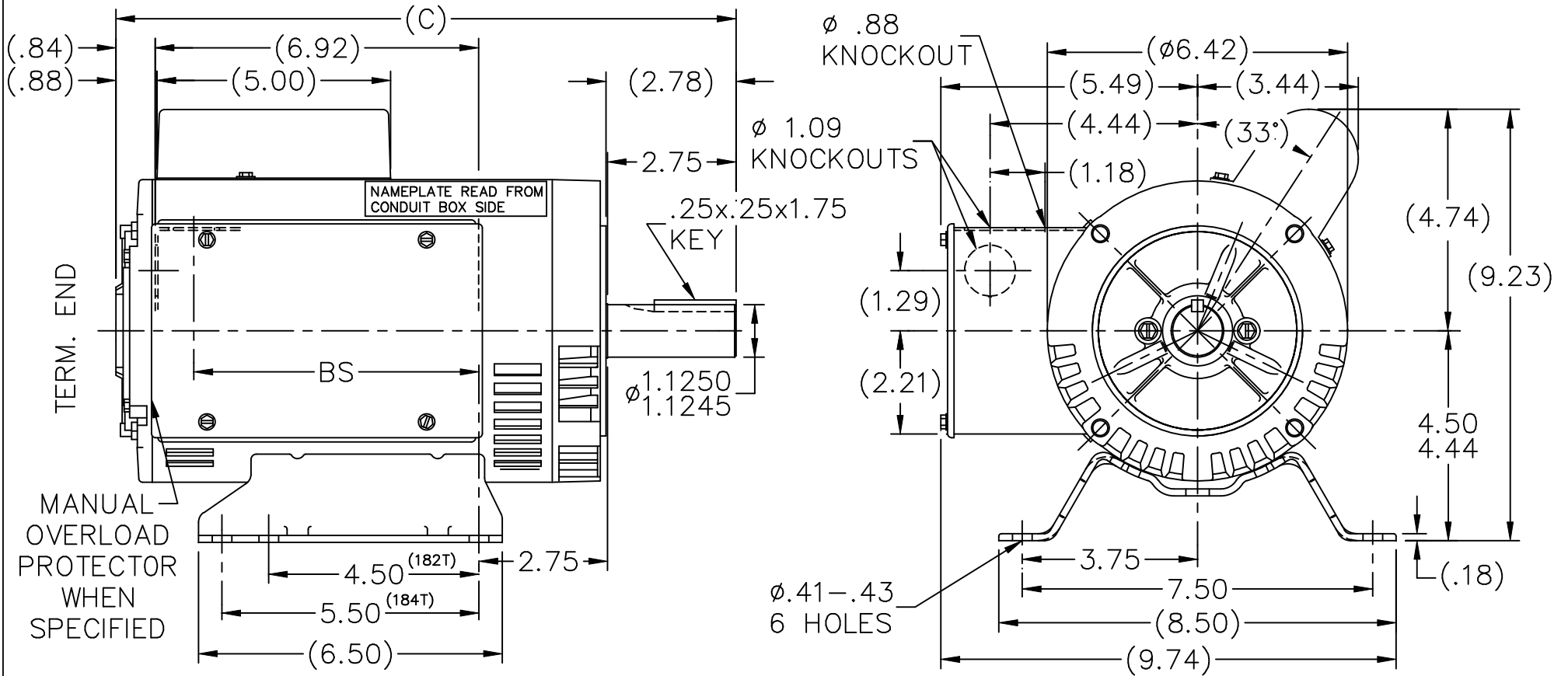
### Nameplate Specifications

Output HP	<b>5 Hp</b>	Output KW	<b>3.7 kW</b>
Frequency	<b>60 Hz</b>	Voltage	<b>230 V</b>
Current	<b>20.0 A</b>	Speed	<b>3510 rpm</b>
Service Factor	<b>1.15</b>	Phase	<b>1</b>
Efficiency	<b>84 %</b>	Duty	<b>Continuous</b>
Insulation Class	<b>B</b>	Design Code	<b>L</b>
KVA Code	<b>H</b>	Frame	<b>184T</b>
Enclosure	<b>Drip Proof</b>	Overload Protector	<b>No</b>
Ambient Temperature	<b>40 °C</b>	Drive End Bearing Size	<b>6206</b>
Opp Drive End Bearing Size	<b>6203</b>	UL	<b>Recognized</b>
CSA	<b>Y</b>	CE	<b>Y</b>
IP Code	<b>22</b>		


### Technical Specifications

Electrical Type	<b>Capacitor Start Capacitor Run</b>	Starting Method	<b>Across The Line</b>
Poles	<b>2</b>	Rotation	<b>Selective Counterclockwise</b>
Mounting	<b>Rigid base</b>	Motor Orientation	<b>Horizontal</b>
Drive End Bearing	<b>Ball</b>	Opp Drive End Bearing	<b>Ball</b>
Frame Material	<b>Rolled Steel</b>	Shaft Type	<b>T</b>
Overall Length	<b>14.77 in</b>	Frame Length	<b>10.06 in</b>
Shaft Diameter	<b>1.125 in</b>	Shaft Extension	<b>2.78 in</b>
Assembly/Box Mounting	<b>F1 Only</b>		
Outline Drawing	<b>A-100354-1006</b>	Connection Diagram	<b>102006-80</b>

This is an uncontrolled document once printed or downloaded and is subject to change without notice. Date Created: 06/29/2018



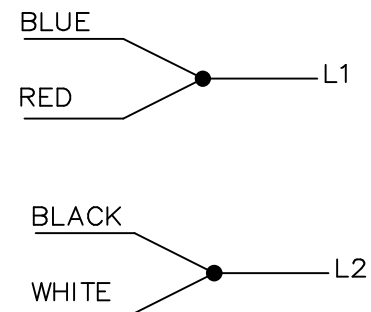
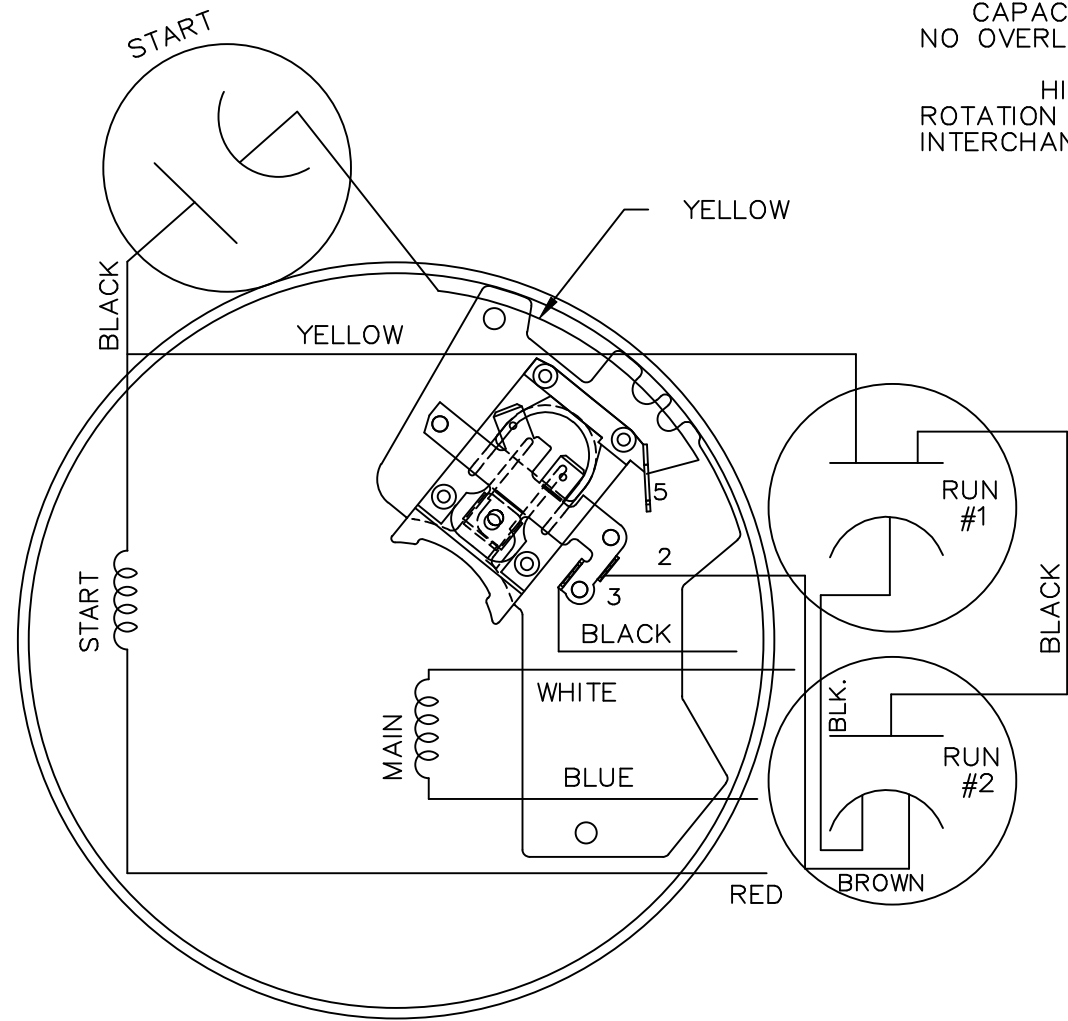
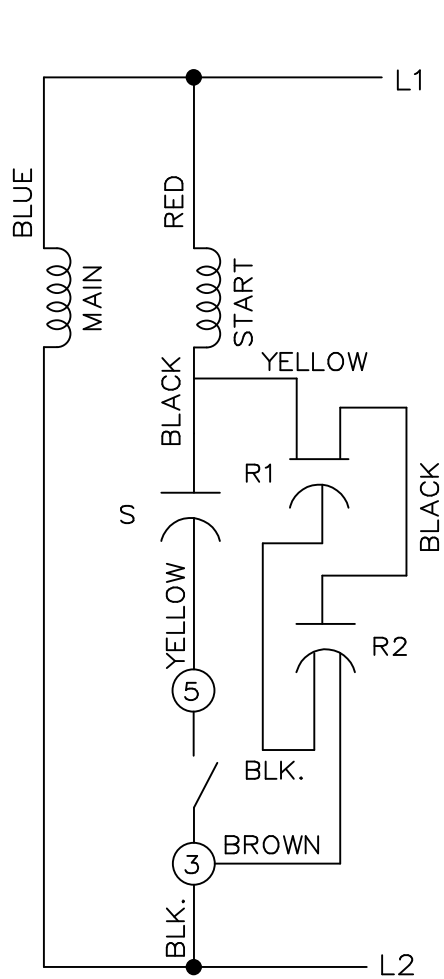
DASH	FR.	C	BS
856	180T	13.27	6.10
906	180T	13.77	6.60
956	180T	14.27	7.10
1006	180T	14.77	7.60

				TOLERANCES UNLESS SPECIFIED				DRAWN GK 11-01-1989				
				DEC.	INCHES			CHK				
4	REDRAWN IN AUTOCAD	TAT 05-09-2005	ML	.X	±.1	TITLE OUTLINE 140 FR. - (180T FR. MTG.)		APPD MS 11-07-1989				
3	MOVE NAMEPLATE	DD 01-14-1993		.XX	±.03			SCALE 5=16				
2	REVISED, ADDED NEW BASE	SMC 02-21-1992		.XXX	±.005			REF				
1	NEW DRAWING 3641253	GK 11-01-1989		.XXXX	±.0005	MAT'L. FINISH		FMF				
NO.	REVISION	BY & DATE	CHK	ANG	±7'30"			PREV				
THIS DRAWING IN DESIGN AND DETAIL IS OUR PROPERTY AND MUST NOT BE USED EXCEPT IN CONNECTION WITH OUR WORK ALL RIGHTS OF DESIGN AND INVENTION ARE RESERVED THIS IS AN ELECTRONICALLY GENERATED DOCUMENT - DO NOT SCALE THIS PRINT				RFP	CAD FILE 100354			SIZE	DRAWING NO.	PAGE	OF	REV.
				DIST	WP			A	100354			4

HIGH VOLTAGE C.C.W.

HIGH VOLTAGE  
CAPACITOR START-RUN  
NO OVERLOAD SELECT ROT.

HIGH VOLTAGE C.C.W.  
ROTATION SHOWN, TO REVERSE,  
INTERCHANGE RED AND BLACK



				TOLERANCES UNLESS SPECIFIED			DRAWN PGK 09-18-1996		
				DEC.	INCHES		CHK KL 10-04-1996		
				.X	±.1		APPD ML 10-04-1996		
				.XX	±.02		SCALE 5=8		
				.XXX	±.005		REF		
1	REDRAWN ON CADD	PGK 10-04-1996		.XXXX	±.0005	TITLE CONNECTION DIAGRAM		FMF	
NO.	REVISION	BY & DATE	CHK	ANG	±7'30"	FINISH		PREV	
THIS DRAWING IN DESIGN AND DETAIL IS OUR PROPERTY AND MUST NOT BE USED EXCEPT IN CONNECTION WITH OUR WORK ALL RIGHTS OF DESIGN AND INVENTION ARE RESERVED THIS IS AN ELECTRONICALLY GENERATED DOCUMENT - DO NOT SCALE THIS PRINT				RFP	CAD FILE 102006-80		SIZE	DRAWING NO. PAGE OF	REV.
				DIST WP			A	102006-80	1

