

PRODUCT INFORMATION PACKET

Model No: 184TBDW7026
Catalog No: I114A
5,1800,DP,184T,1/60/208-230
Air Compressor



Regal and Marathon are trademarks of Regal Beloit Corporation or one of its affiliated companies.
©2018 Regal Beloit Corporation, All Rights Reserved. MC017097E





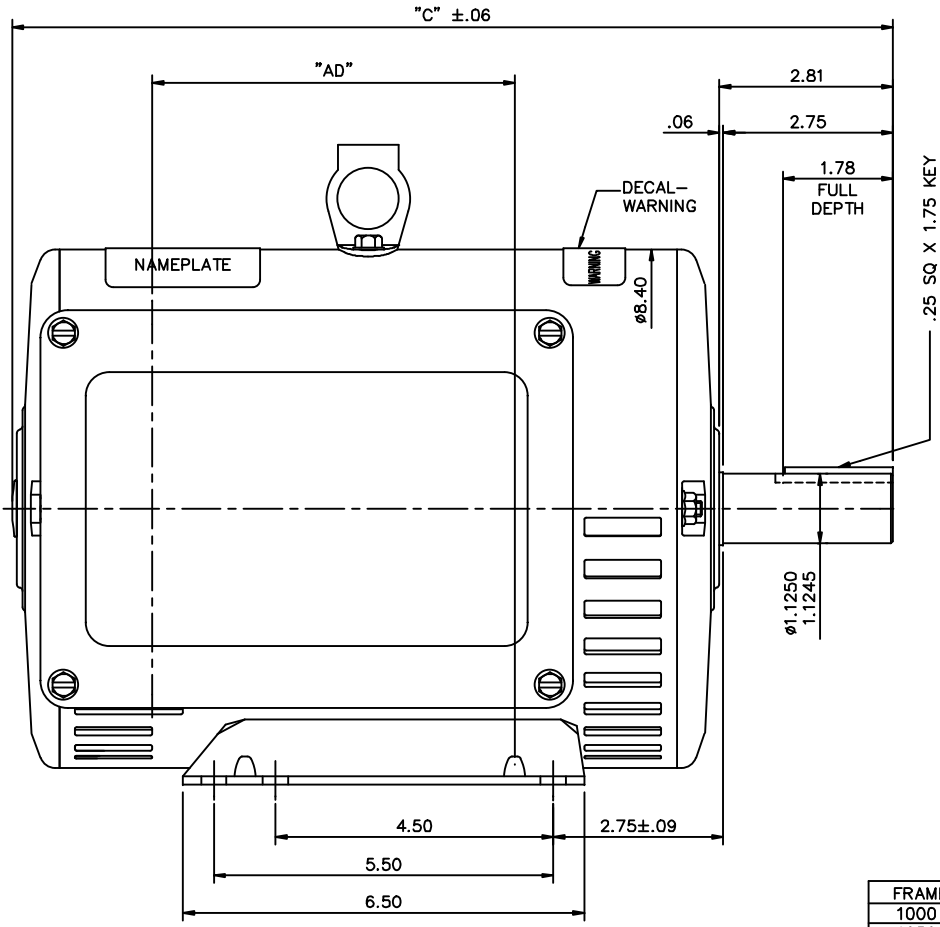
Nameplate Specifications

Output HP	5 Hp	Output KW	3.7 kW
Frequency	60 Hz	Voltage	208-230 V
Current	23.0-21.0 A	Speed	1740 rpm
Service Factor	1.15	Phase	1
Efficiency	83 %	Duty	Continuous
Insulation Class	F	Design Code	NO DESIGN CODE
KVA Code	H	Frame	184T
Enclosure	Drip Proof	Overload Protector	No
Ambient Temperature	40 °C	Drive End Bearing Size	6206
Opp Drive End Bearing Size	6205	UL	Recognized
CSA	Y	CE	Y
IP Code	22		

Technical Specifications

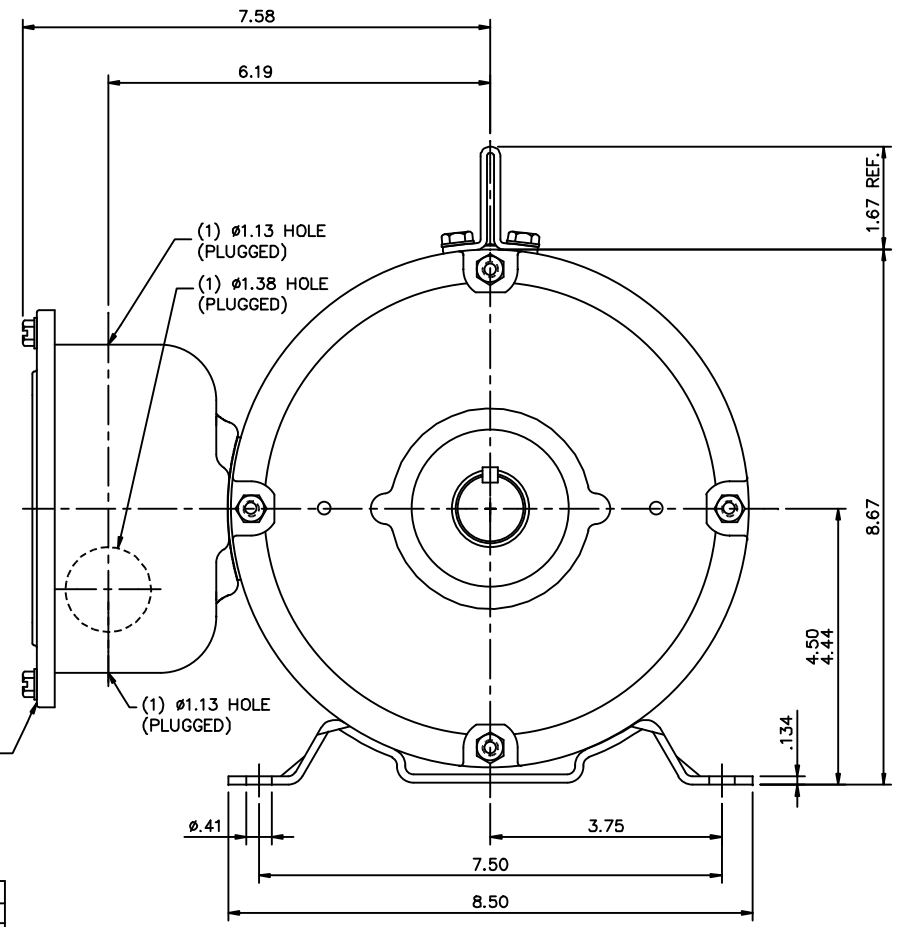
Electrical Type	Capacitor Start Capacitor Run	Starting Method	Across The Line
Poles	4	Rotation	Selective Counterclockwise
Mounting	Rigid base	Motor Orientation	Horizontal
Drive End Bearing	Ball	Opp Drive End Bearing	Ball
Frame Material	Rolled Steel	Shaft Type	T
Overall Length	14.71 in	Frame Length	10.50 in
Shaft Diameter	1.125 in	Shaft Extension	2.81 in
Assembly/Box Mounting	F1 Only		
Outline Drawing	035655-1050	Connection Diagram	005018.01ME

This is an uncontrolled document once printed or downloaded and is subject to change without notice. Date Created: 06/29/2018



FRAME	"C"	"AD"
1000	14.21	5.88
1050	14.71	6.38
1100	15.21	6.88
1150	15.71	7.38
1200	16.21	7.88
1250	16.71	8.38

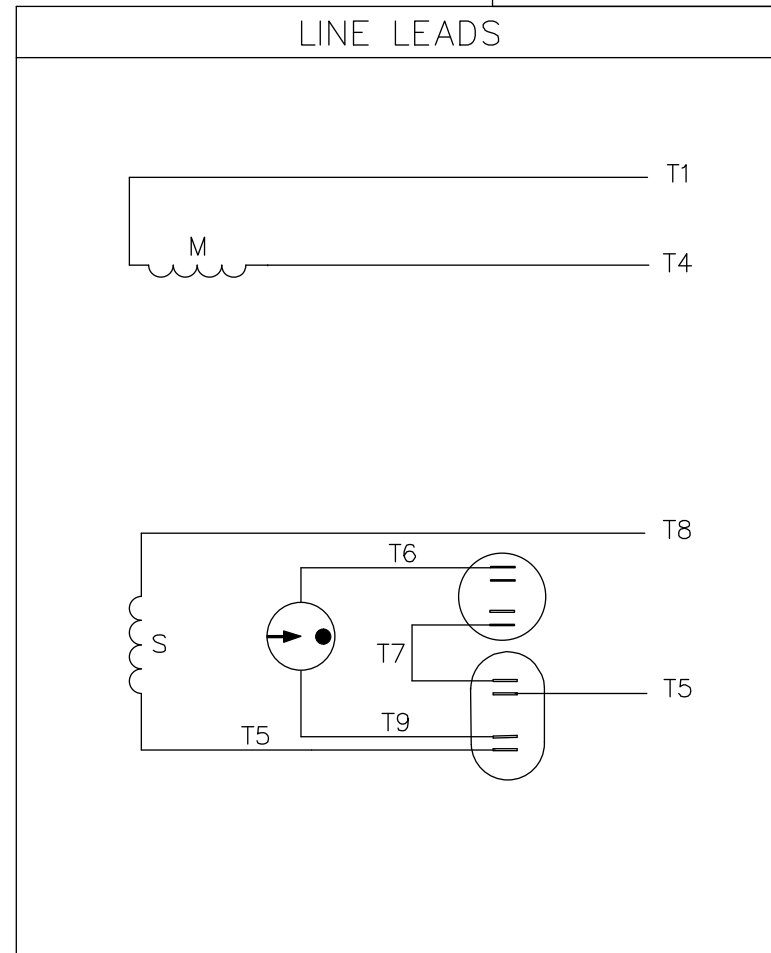
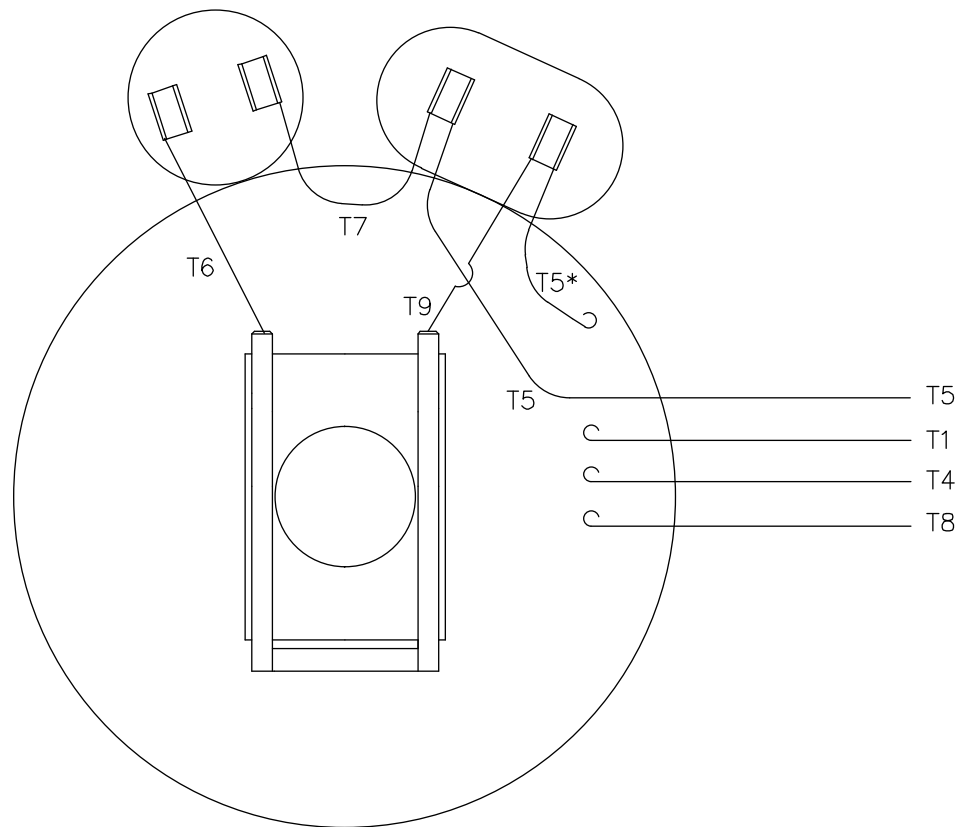
DECAL - CONNECTION UNDERCOVER



GASKETS THROUGHOUT

		TOLERANCES UNLESS SPECIFIED				DRAWN YS 03/17/08	
		DEC.	INCHES			CHK	
		.X	±.1	APPD		SCALE 1-2	
		.XX	±.03	TITLE		REF	
		.XXX	±.005	OUTLINE- 180T FRAME		182TCDW8016	
		.XXXX	±.0005	DRIP PROOF- RIGID		PREV	
		.XXXX	±.0005	MAT'L.		FMF	
		CHK	ANG	FINISH		RFP	
NO.		REVISION	BY & DATE	CAD FILE		DIST	
THIS DRAWING IN DESIGN AND DETAIL IS OUR PROPERTY AND MUST NOT BE USED EXCEPT IN CONNECTION WITH OUR WORK ALL RIGHTS OF DESIGN AND INVENTION ARE RESERVED THIS IS AN ELECTRONICALLY GENERATED DOCUMENT - DO NOT SCALE THIS PRINT				035655		SIZE B	
				DRAWING NO.		REV.	
				035655		035655	

VIEW FROM OUTSIDE OF MOTOR AT SWITCH END.



ROTATION FACING LEAD END	L1	L2
C.C.W.	T1,T8	T4,T5
C.W.	T1,T5	T4,T8

* THIS LEAD MAY BE WHITE

		TOLERANCES UNLESS SPECIFIED		DRAWN RDW 6/5/03	
		DEC.	INCHES	CHK	
		.X	±.1	APPD	
		.XX	±.01	SCALE 1=1	
		.XXX	±.005	REF 005018	
		.XXXX	±.0005	FMF 139047	
NO.	REVISION	BY & DATE	CHK	ANG ±1/2'	PREV
THIS DRAWING IN DESIGN AND DETAIL IS OUR PROPERTY AND MUST NOT BE USED EXCEPT IN CONNECTION WITH OUR WORK ALL RIGHTS OF DESIGN AND INVENTION ARE RESERVED THIS IS AN ELECTRONICALLY GENERATED DOCUMENT - DO NOT SCALE THIS PRINT			RFP	6/5/03	CAD FILE 00501801ME
			DIST		SIZE A
					DRAWING NO. 005018-01ME
					REV.



TITLE EXTERNAL WIRING DIAGRAM TYPE "K" W/O PROTECTOR
 MAT'L. DECAL - 004018

CERTIFICATION DATA SHEET

Model#: 184TBDW7026 AA **WINDING#:** K8450 DR 2
CONN. DIAGRAM: 005018.01ME **ASSEMBLY:** F1 ONLY
OUTLINE: 035655-1050

TYPICAL MOTOR PERFORMANCE DATA

HP	KW	SYNC. RPM	F.L. RPM	FRAME	ENCLOSURE	KVA CODE	DESIGN
5	3.7	1800	1740	184T	DP	H	NO DESIGN CODE

PH	Hz	VOLTS	FL AMPS	START TYPE	DUTY	INSL	S.F	AMB°C	ELEVATION
1	60	208-230	23-21	ACROSS THE LINE	CONTINUOUS	F4	1.15	40	3300

FULL LOAD EFF: 83	3/4 LOAD EFF: 81.9	1/2 LOAD EFF: 77.2	GTD. EFF	ELEC. TYPE	NO LOAD AMPS
FULL LOAD PF: 94	3/4 LOAD PF: 93.5	1/2 LOAD PF: 89.6	0	CAP START CAP RUN	5.9

F.L. TORQUE	LOCKED ROTOR AMPS	L.R. TORQUE	B.D. TORQUE	F.L. RISE°C
15 LB-FT	138	41.1 LB-FT 242	32.5 LB-FT 191	-

SOUND PRESSURE @ 3 FT.	SOUND POWER	ROTOR WK^2	MAX. WK^2	SAFE STALL TIME	STARTS /HOUR	APPROX. MOTOR WGT
62 dBA	72 dBA	0.46 LB-FT^2	0.5 LB-FT^2	10 SEC.	-	0 LBS.

***** SUPPLEMENTAL INFORMATION *****

DE BRACKET TYPE	ODE BRACKET TYPE	MOUNT TYPE	ORIENTATION	SEVERE DUTY	HAZARDOUS LOCATION	DRIP COVER	SCREENS	PAINT
STANDARD	STANDARD	RIGID	HORIZONTAL	FALSE	NONE	FALSE	NONE	BLUE (ENAMEL)

BEARINGS		GREASE	SHAFT TYPE	SPECIAL DE	SPECIAL ODE	SHAFT MATERIAL	FRAME MATERIAL
DE	OPE	POLYREX EM	T	NONE	NONE	AISI 1045 (C-240)	ROLLED STEEL
BALL	BALL						
6206	6205						

THERMO-PROTECTORS				THERMISTORS	CONTROL	SPACE /n HEATERS
THERMOSTATS	PROTECTORS	WDG RTDs	BRG RTDs	NONE	FALSE	NONE VOLTS
NONE	NOT	NONE	NONE			

If Inverter equals NONE, contact factory for further information

*
N
O
T
E
S
*

INVERTER TORQUE: NONE
INV. HP SPEED RANGE: NONE
ENCODER: NONE
NONE NONE
NONE NONE PPR
BRAKE: NONE NONE
NONE P/N NONE
NONE NONE
NONE FT-LB NONE V NONE Hz

DATE: 07/08/2017 12:44:35 AM
 FORM 3531 REV.3 02/07/99
 ** Subject to change without notice.