

# Installation Accessories

Accessories can be used with either poly or metal plugs and receptacles, except stainless steel accessories should only be used with stainless inlets and receptacles.

## Handles



NPT	Poly Handle Threaded Opening	Metal Handle* Threaded Opening	90° Nylon Handle Threaded Opening	Stainless Steel Handle	Cable Range	Nylon Handle	Angled Nylon Handle
1/2"	01-NA013-12	H091U12	04-2A090-5-12	09-2A013-SS-12*	.35 - .69	01-NA013	01-NA313
3/4"	01-NA013-34	H091U34	04-2A090-5-34	09-2A013-SS-34			
1"	01-NA013-1	H091U1	04-2A090-5-10	-			

- Notes:**
- For available cord grips, see pgs 169-170.
  - \* For metal devices only.
  - + For 1/2" NPT size, a hole size reducer is utilized.

## NPT Guidelines

Cable Range	NPT
.312 - .625	1/2"
.438 - .812	3/4"
.660 - 1.000	1"
.875 - 1.375	1 1/4"

NPT sizes are determined by the cable diameter and third party cord grip.

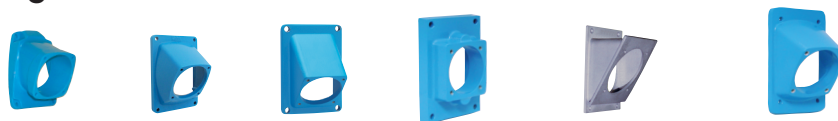
## Junction Boxes



NPT	Metal Box	Metal Box with Nylon 30° Angle	Metal Box with Metal 45° Angle	Poly Conduit* Entry	Poly Straight* Wall Box	Metal Straight Wall Box	Stainless Steel Angle with Stainless Steel Box	Poly 70°** Wall Box
1/2"	MB312	01-NA053-080-12	09-NA053-080-12	01-NA023-12	01-NA025-12	09-NA025-12	-	51-AA058
3/4"	MB334	01-NA053-080-34	09-NA053-080-34	01-NA023-34	01-NA025-34	09-NA025-34	-	51-AA058
1"	MB31	01-NA053-080-1	09-NA053-080-1	-	-	-	09-2A053-080-SS-1	51-AA058
1 1/4"	MB3114	01-NA053-080-114	09-NA053-080-114	-	-	-	-	51-AA058

- \* For poly devices only.  
 \*\* 70° boxes are not drilled. Contact customer service if factory drilling is required.  
 + Interior volume with receptacle installed.

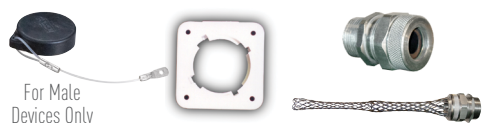
## Angles



Nylon 30° Angle	Nylon 30° Angle for MB Box	Metal 45° Angle	Metal Straight Adapter	Stainless Steel 30° Angle	Metal 30° Angle for FS Box
01-NA027	01-NA027-601	09-NA027	MSPN	09-2A027-SS	MAFS1*

\* MAFS1 base measures approximately 4.2" x 2.7". Due to the variation in sizes of FS boxes, please verify that your FS box matches our dimensions, if not call Customer Service for other solutions.

## Miscellaneous Accessories



Protective* Cap	Flush Mount	Cord Grip with Mesh
01-2A126	01-2A142	see pgs 169-170

\* Will not fit devices with reverse interior option.

## Order Example

A typical order should include an inlet part number, a receptacle part number **AND** the matching handles, angles or other required accessories.



**Male Inlet with Handle (Plug)**  
09-P8061 + 01-NA313



**Female Receptacle with Angle Adapter**  
09-P4061 + 01-NA027