



Ethernet Series Etherlink V3

8 Conductor Ethernet Series Receptacles, 24AWG



Female Front Mount Receptacles | 42 VDC, 1.5 amps | IP67 Rating

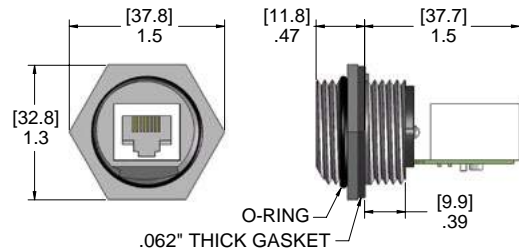
Ethernet Series

L

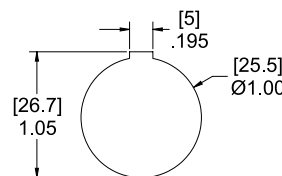
Etherlink V3 Female Receptacle to Male Plug with CAT5e Cable						
# of Poles	Front View	Rating	Wire AWG	Cap (E45V3-CAP)	Part Number	Housing Style
8		60V 1A	24	Not Included	E45V3-8FMR-*M25	
				Included	E45V3-8FMR-*M25-CP	
Etherlink V3 Female Receptacle to 110 Punchdown Block						
8		N/A	20-26	Not Included	E45V3-8FMR-110-M25	
				Included	E45V3-8FMR-110-M25-CP	
Etherlink V3 Female Receptacle to Female Receptacles						
8		N/A	N/A	Not Included	E45V3-8FFR-M25	
				Included	E45V3-8FFR-M25-CP	
Etherlink V3 Field Wireable to Female Receptacle Solder to Board						
8		N/A	N/A	Not Included	E45V3-8FR-FW-M25	
				Included	E45V3-8FR-FW-M25-CP	

* Length in feet. Standard cable lengths are 1, 3, 7, 10 & 15 feet. Consult factory for other lengths.

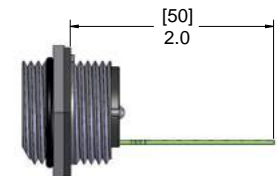
Etherlink V3 Accessories	
Cap	Part Number
	E45V3-CAP
Protective Lock Nut	
	Protective lock nut provided with each receptacle.



Ethernet V3 Receptacle



Cut-out



Ethernet V3 Field Wireable

Specifications:

- Insulator: Polyamide
- Cable: CAT5e with PVC Jacket
- Contacts: Copper Alloy with Gold Plating
- O-Ring: NBR
- Temperature: -40°C to +80°C (-40°F to +176°F)