

## FS Series

### Non-Fusible Motor Disconnect Switches

### 30 Amp

#### ORDERING INFORMATION




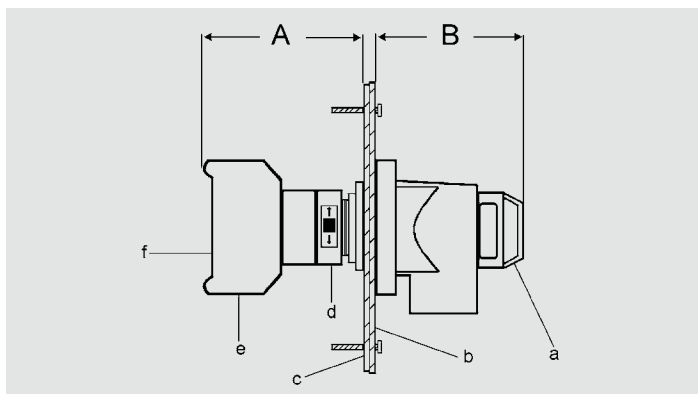
Shown with Weatherproof  
FS Plate.

AMP.	HP RATINGS						CATALOG NO.			
	120V		240V		480/600V		WITH FS PLATE*		HANDLE AND SWITCH ONLY	
	1Ø	3Ø	1Ø	3Ø	1Ø	3Ø	WITH AUX. CONTACTS	NO AUX. CONTACTS	WITH AUX. CONTACTS	NO AUX. CONTACTS
30	1	2	2.5	5	5	10	<b>ME 30FSP-M2</b>	<b>ME 30FSP</b>	<b>ME 30FS-M2</b>	<b>ME 30FS</b>

\* Rated for use in wet and damp locations.

#### Compliances & Performance:

- Suitable as Motor Disconnect per 1999 NEC Article 430-109(a)(6)
- Switch:  Standard 508
- Padlockable handle complies with OSHA LOTO regulations



#### Approximate Dimensions (in inches)

	DIMENSIONS	DESCRIPTION
A	2.45	a - padlockable handle
B	2.05	b - FS plate pre-drilled with installed handle
		c - gasket
		d - lock/release mechanism to attach switch body to plate and handle