



COUNT ON THE HIGH INTERRUPTING RATING OF OUR *MOST WIDELY-USED* CLASS L FUSE

When it comes to protecting service entrance equipment, feeder circuits, and circuit breakers, A4BY fuses have been the industry's favorite. The A4BY is a 100% rated device and may be applied at continuous currents up to its ampere rating. A 4-second minimum time delay at 500% rating allows the A4BY to pass normal current surges and to coordinate with ground fault relays.

B

Features/Benefits

- **Unique dimensions** prevent replacement by other fuse classes
- **Blade stamped catalog numbers** for permanent identification
- **Glass melamine body and plated terminals** provide superior reliability in harsh environments

HIGHLIGHTS:

- Current-Limiting
- 4-Second Time Delay
- DC Ratings
- Uniform Characteristics in all Ampere Ratings

APPLICATIONS:

- Mains, Feeders
- Circuit Breakers
- Loadcenters
- Panelboards
- Switchboards
- Metering Centers

Ratings

- **AC:** 200 to 6,000A
600VAC, 200kA I.R.
- **DC:** 200 to 2500A
300VDC, 100kA I.R.

Approvals

- UL Listed to Standard 248-10 (601-6000A) File E2137
- CSA Certified to Standard C22.2 No. 248.10 (601-6000A)
- Ferraz Shawmut Certified for DC per UL248 (601-6000A)

Indicators

Optional built-in fuse indicators (-TI) are available. Consult factory.

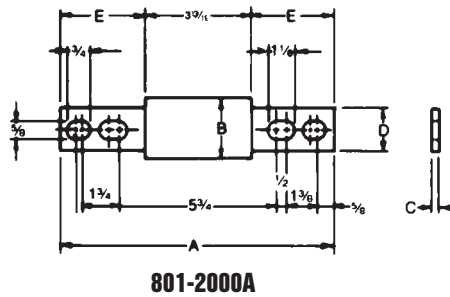
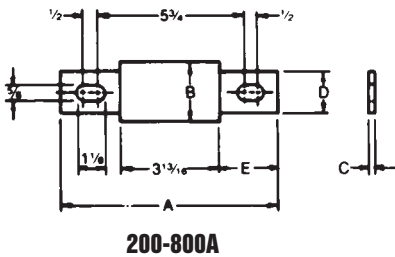
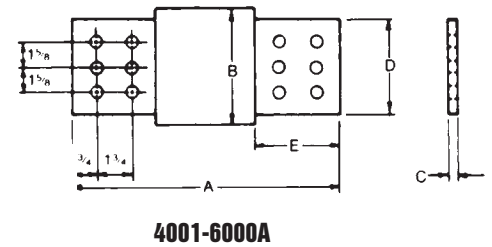
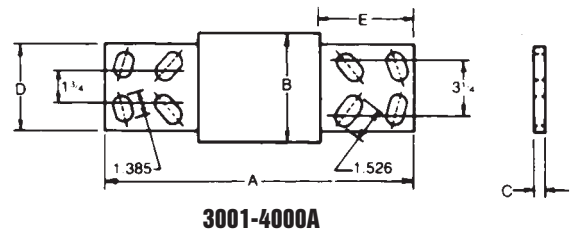
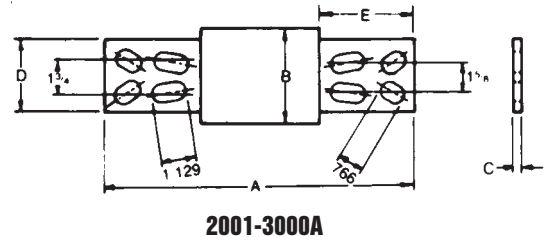


CLASS L FUSES

A4BY

Standard Fuse Ampere Ratings, Catalog Numbers

AMPERE RATING	CATALOG NUMBER	AMPERE RATING	CATALOG NUMBER	AMPERE RATING	CATALOG NUMBER
200	A4BY200	801	A4BY801	2000	A4BY2000
250	A4BY250	900	A4BY900	2001	A4BY2001
300	A4BY300	1000	A4BY1000	2200	A4BY2200
350	A4BY350	1100	A4BY1100	2500	A4BY2500
400	A4BY400	1200	A4BY1200	3000	A4BY3000
450	A4BY450	1201	A4BY1201	3001	A4BY3001
500	A4BY500	1350	A4BY1350	3500	A4BY3500
600	A4BY600	1400	A4BY1400	4000	A4BY4000
601	A4BY601	1500	A4BY1500	4001	A4BY4001
650	A4BY650	1600	A4BY1600	4500	A4BY4500
700	A4BY700	1601	A4BY1601	5000	A4BY5000
750	A4BY750	1800	A4BY1800	6000	A4BY6000
800	A4BY800				



Dimensions

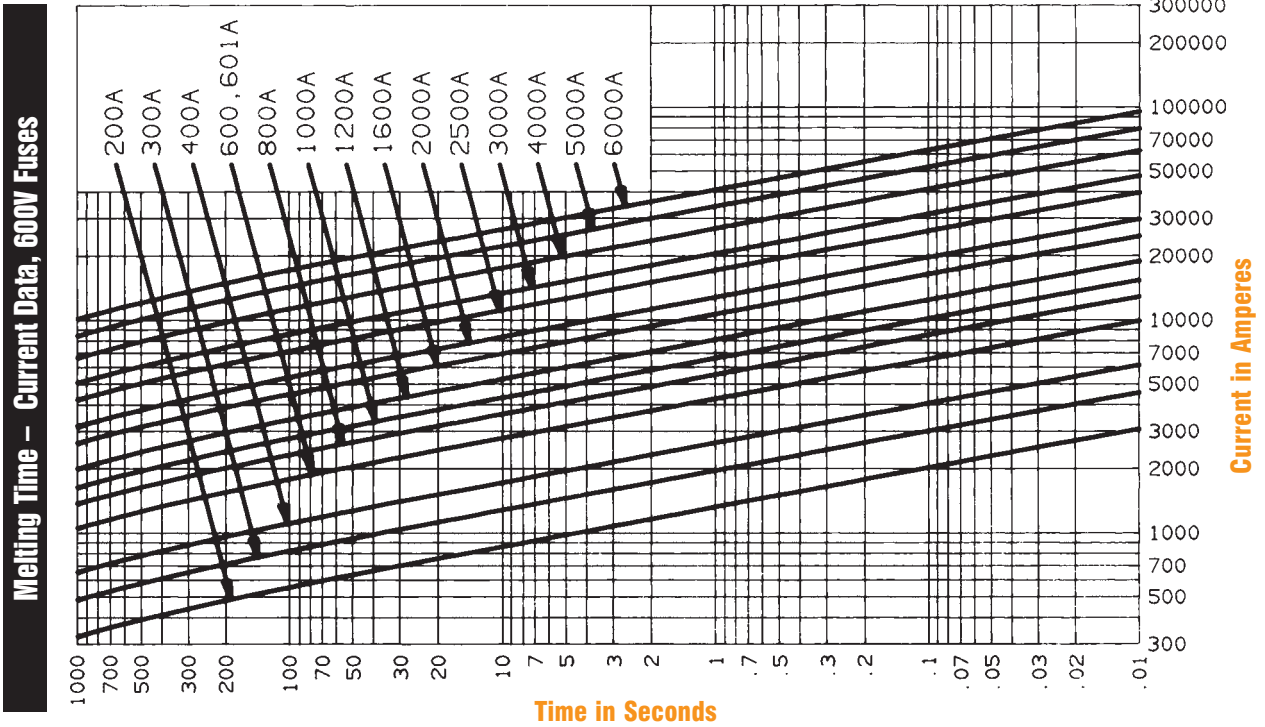
AMPERE RATING	A		B		C		D		E	
	In.	mm	In.	mm	In.	mm	In.	mm	In.	mm
200-600	8-5/8	219	2	51	5/16	8	1-5/8	41	2-13/32	61
601-800	8-5/8	219	2-1/2	63	3/8	9	2	51	2-13/32	61
801-1200	10-3/4	273	2-1/2	63	3/8	9	2	51	3-15/32	88
1201-1600	10-3/4	273	3	76	7/16	11	2-3/8	60	3-15/32	88
1601-2000	10-3/4	273	3-1/2	89	1/2	13	2-3/4	70	3-15/32	88
2001-2500	10-3/4	273	4-1/2	114	3/4	19	3-1/2	89	3-15/32	88
2501-3000	10-3/4	273	5	127	3/4	19	4	102	3-15/32	88
3001-4000	10-3/4	273	5-3/4	146	3/4	19	4-3/4	121	3-15/32	88
4001-5000	10-3/4	273	6-1/4	159	1	25	5-1/4	133	3-15/32	88
5001-6000	10-3/4	273	7-1/8	181	1	25	5-3/4	146	3-15/32	88

Safety Note: Class L fuses are dimensioned for one-way interchangeability.
 A Class L fuse of any lower ampere rating can be substituted for a given Class L fuse.

CLASS L FUSES

A4BY

A4BY200 to 6000



B

Peak Let-Thru Current Data – A4BY300 to 6000, 600 Volts AC

