

## POWER DISTRIBUTOR CUBE 67

4x M12, 6-pole

Power distributor (4x M12)

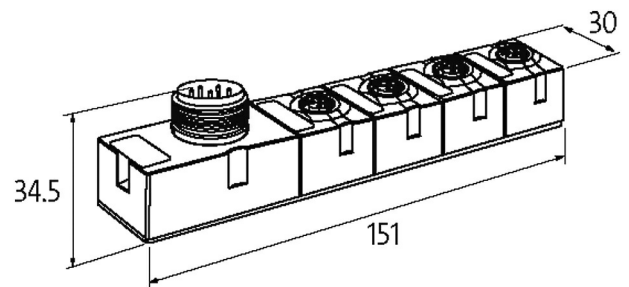
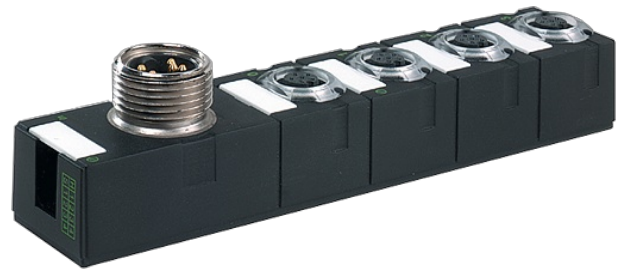
System accessories

Protection IP67

Connection cables are in the online shop under "Connection Technology".

Housing fully potted.

### Illustration



Product may differ from Image

### Approvals



### General data

Protection	IP67
Mounting method	2-hole screw mounting
Temperature range	0...+55 °C (storage temperature -20...+75 °C)
Dimensions H×W×D	150×30×34.5 mm

### Module supply

Operating voltage	24 V DC (EN 61131-2)
-------------------	----------------------

### Diagnostic

Monitoring - no voltage	yes
Short-circuit and overload	yes

### Voltage inputs

Input voltage	24 V DC (EN 61131-2)
Connection	7/8" (male), 5-pole
Current load capacity	max. 9 A

**Voltage output signals**

Connection	Female M12, 6-pole
Current load capacity	max. 4 A

**Commercial data**

country of origin	DE
customs tariff number	85389099
EAN	4048879047852
eClass	27242690
Packaging unit	1