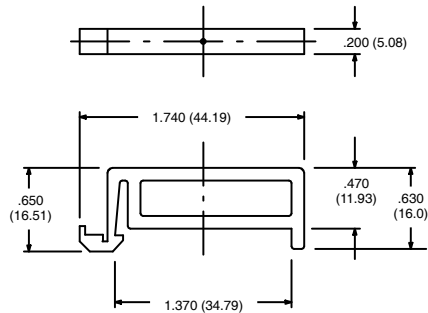


R95-127

DIN Rail Spacer



R95-130

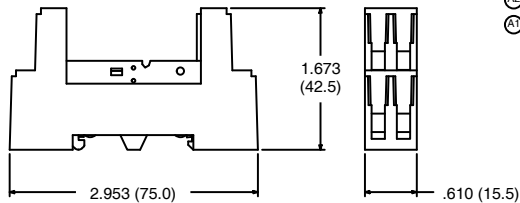
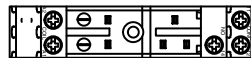
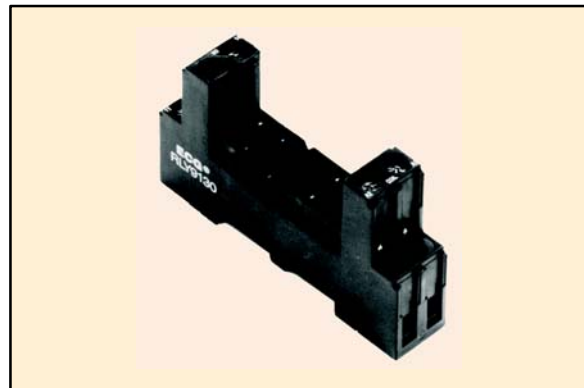
5-Pin Slim Line Socket

Features

- DIN Rail Mount
- Finger Safe
- SPDT Applications

Electrical Rating:

300 Volts, 12 Amps



R95-133

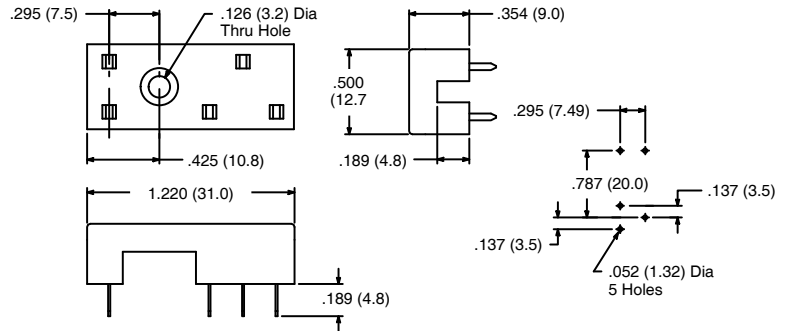
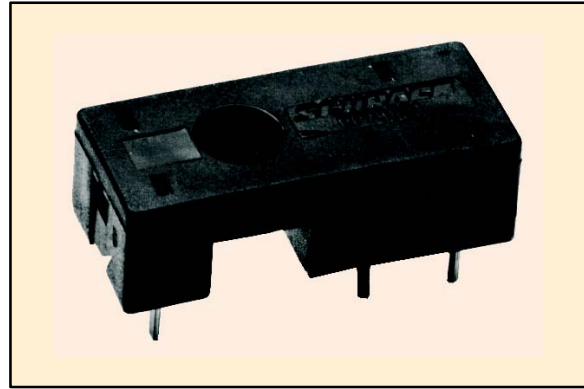
5-Pin Slim Line Socket

Features

- PC Board Mount
- SPDT Applications

Electrical Rating:

300 Volts, 12 Amps



R95-148

8-Pin Miniature Blade Socket

Features

- Panel Mount
- Solder Terminals, GND Lug Omitted
- DPDT Applications
- Hold down clip not supplied with socket, available separately (R95-001)

Electrical Rating:

300 Volts, 10 Amps

