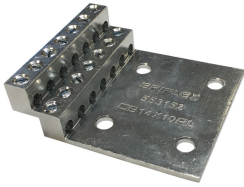
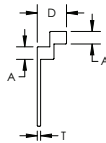
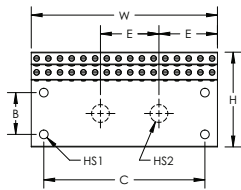


# CB Connecting Bar – CB14X10AL (553152)



nVent ERIFLEX Connecting, Earthing and Neutral Busbars are used to connect several earthing conductors within a panel and can be used in a variety of different applications including switchgear and control equipment, electrical equipment, for wind and solar power generation and in data centers. CB Busbars can also be used to collect DC current from Solar Panel.

- Ideal for solar applications
- Tinned aluminum bar allows for copper or aluminum conductor connections
- Design allows for visual inspection of conductor and confirmation of connection
- Can be fixed on standoff insulators or punched or threaded copper busbar
- High fill ratio allows output connection with or without terminal
- Quick and easy installation
- RoHS compliant



Part Number	CB14X10AL
Article Number	553152
Material	Aluminum
Finish	Tinned
Max Current Rating, IEC	450 A
Number of Connections	14
Conductor Size, IEC	[14] 1.5 - 6 mm <sup>2</sup> Stranded
Ferrule Conductor Size, IEC	[14] 2.5 - 6 mm <sup>2</sup>
Conductor Size, UL	[14] #14 - #6 Solid [14] #16 - #6 Stranded
Depth (D)	0.87"
Height (H)	2.83"
Width (W)	2.42"
Thickness (T)	0.1"
Hole Size 1 (HS1)	0.26"
A	3/8"
B	1 1/4"
C	1.42"
Torque (TQ)	1.47 ft lb

Part Number	CB14X10AL
Unit Weight	0.15 lb
Complies With	IEC® 60947-1 IEC® 60998-2-1
Certifications	CE cULus RoHS
Standard Packaging Quantity	10 pc
UPC	78285693175
EAN-13	0782856931751

IEC is a registered trademark of the International Electrotechnical Commission. UL, UR, cUL, cUR, cULus and cURus are registered certification marks of UL LLC.

© 2019 nVent All rights reserved  
nVent, nVent CADDY, nVent ERICO, nVent ERIFLEX and nVent LENTON are owned by nVent or its global affiliates.  
All other trademarks are the property of their respective owners. nVent reserves the right to change specifications without prior notice.