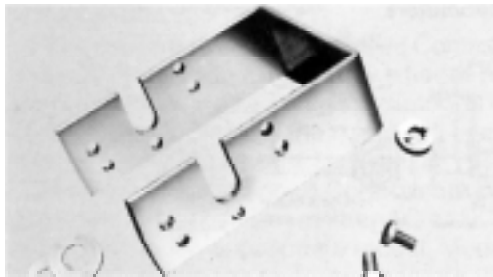


# Rheostat and Tap Switch Hardware

Knobs, Dials, Mounting Fasteners

## RHEOSTAT TANDEM COUPLING KITS



Ohmite coupling kits permit tandem mounting of two rheostat units. A coupling fastens to the shaft of the back unit; projections on the coupling engage the recesses in the driving hub of the front unit.

Each kit consists of a steel "U" frame, a coupling with set screw, mica washer, allen wrench and instructions.

| Part No. | Front mount models | Rear mount models | Max. panel thickness |
|----------|--------------------|-------------------|----------------------|
| ⊕ 6532   | H, J               | H, J, G, K, L     | 5/32"                |
| ✓ 6533   | G, K, L            | H, J, G, K, L     | 1/8"                 |
| ❖ 6591   | E                  | E                 | 1/16"                |

## RHEOSTAT REPAIR KITS



Designed for replacing electrical contact. Kit includes contact/slip ring assemblies (for round and ribbon wire rheostats), copper graphite washer, spring arm and hub. Instructions included.

| Part No. | Rheostat model |
|----------|----------------|
| ✓ 7070   | P              |
| ✓ 7071   | N              |
| ✓ 7072   | R              |
| ✓ 7074   | U              |

## EXTRA MOUNTING HARDWARE

Kit contains 25 each, nuts and lock washers for panel mounting units.

| Part No. | For model                    |
|----------|------------------------------|
| ✓ 7090   | E                            |
| ✓ 7091   | H, J, G, K, L, 111, 212, 711 |

⊕ = Most popular stock values

✓ = Stock values

❖ = Non-stock values subject to minimum handling charge per item

## KNOBS

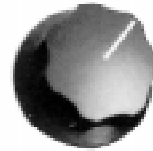


Finger grip  
with pointer

Finger grip  
without pointer

Handwheel  
with pointer

Handwheel  
without pointer



Finger grip



Bar knob,  
1.5" long



Bar knob,  
4.75" long

Any knob can be used with any rheostat and tap switch model which has the corresponding shaft diameter. Knobs are fastened to shafts with slotted set screws.

| Slotted set screw   | Hex socket set socket | Description                 | Knob dia. | Hole dia. |
|---------------------|-----------------------|-----------------------------|-----------|-----------|
| ❖ 5102              | —                     | Bar knob, 2 1/4" long       | —         | 1/4"      |
| ⊕ 5103              | ✓ 5103A               | Bar knob, 1 1/4" long       | —         | 1/4"      |
| ⊕ 5104              | ✓ 5104A               | Handwheel with pointer      | 3 1/4"    | 3/8"      |
| ✓ 5105 <sup>1</sup> | —                     | Handwheel without pointer   | 3 1/4"    | 3/8"      |
| ✓ 5106              | ❖ 5106A               | Handwheel with pointer      | 3 1/4"    | 1/4"      |
| ❖ 5107              | —                     | Handwheel without pointer   | 3 1/4"    | 1/4"      |
| ⊕ 5109              | ✓ 5109A               | Finger-grip with pointer    | 1 5/8"    | 1/4"      |
| ✓ 5110              | ✓ 5110A               | Finger-grip without pointer | 1 5/8"    | 1/4"      |
| ⊕ 5111              | ⊕ 5111A               | Finger-grip with pointer    | 2 3/8"    | 1/4"      |
| ❖ 5112              | ❖ 5112A               | Finger-grip without pointer | 2 3/8"    | 1/4"      |
| ❖ 5115 <sup>2</sup> | —                     | Bar knob, 4 3/4"            | —         | 3/8"      |
| ⊕ 5116              | ❖ 5116A               | Bar knob, 1 1/2"            | —         | 1/4"      |
| ⊕ 5150 <sup>3</sup> | ❖ 5150A               | Finger-grip                 | 1 1/2"    | 1/4"      |
| ⊕ 5151 <sup>4</sup> | —                     | Finger-grip                 | 3/4"      | 1/8"      |
| —                   | ✓ 5152A               | Like 5104 (shorter pointer) | 3 1/4"    | 1/4"      |

<sup>1</sup>Recommended for rheostat models P, N, R, U.

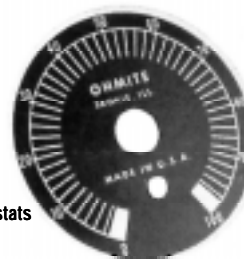
<sup>2</sup>Requires pin and tapped hole in shaft.

<sup>3</sup>Recommended for rheostat models H, J, G, K, L.

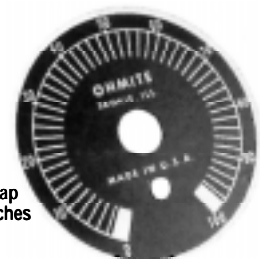
<sup>4</sup>Recommended for rheostat models C, E.

## DIALS

Handsomely finished, black-enameled, aluminum dials for Ohmite rheostats and tap switches. Figures and lines are etched on a black background for contrast and ease of readability. On rheostat dials, divisions indicating approximate percentage of rheostat resistance in circuit are marked from 0 to 100. On tap switch dials, Number of dial positions are identical with number of switch positions.



For  
rheostats



For tap  
switches

| Part No. | For model                       | For knob         | Dial dia. |
|----------|---------------------------------|------------------|-----------|
| ⊕ 5007   | C, E                            | 5151             | 1 1/4"    |
| ⊕ 5000   | H, J, G, K, L                   | 5150, 5116, 5103 | 2 3/16"   |
| ✓ 5001   | P, N, R, U                      | 5104, 5106       | 5 1/2"    |
| ✓ 5002-* | 111, 212 (single), 312 (single) | 5109, 5116, 5150 | 2 3/4"    |
| ✓ 5003-* | 212 (tandem), 312 (tandem), 412 | 5111, 5152A      | 3 3/4"    |
| ✓ 5004-* | 608                             | 5104, 5115       | 5 1/2"    |

\* Specify number of positions as suffix.