



THIS COPY IS PROVIDED ON A RESTRICTED BASIS AND IS NOT TO BE USED IN ANY WAY DETRIMENTAL TO THE INTERESTS OF PANDUIT CORP.

INSTRUCTIONS FOR THE USE OF GO AND NO-GO PIN GAUGES FOR CD-920 AND CD-940 STYLE CRIMP DIES

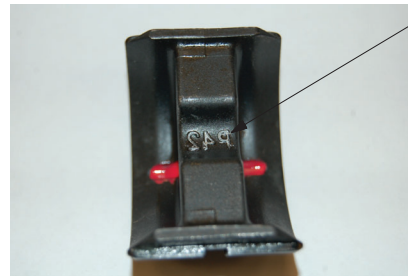
Please follow the steps below for the use of pin gauges to check for wear of the Crimp Die set, also for an undersized Crimp Die set.

STEP ONE

Please select the correct Crimp Die set and the correct gauge pins for the application that you will be checking. Wipe die set clean.



Your die set outside surfaces should look like this.



Your RAISED LETTER die set inside surfaces should look like this. The raised letters in this picture have been painted to show up more clearly. The diameter will be gauged across the surfaces of these letters. In die sets with recessed letters, the pockets will be gauged.

(A) NOTES:

- CD-920 CRIMP DIES WITH QC #'S AT OR HIGHER THAN 13287938L, WILL HAVE RAISED DIE INDEX NUMBERS IN DIE POCKET.
- CD-920 CRIMP DIES WITH QC #'S LOWER THAN 13287938L, WILL HAVE ENGRAVED DIE INDEX NUMBERS IN THE DIE POCKET.

For the purposes of this gauging, the upper pin tolerance (NO GO) is $\pm .001''$ and the lower pin tolerance (GO) is $\pm .001''$.

REV	DATE	BY	CHK	APR	DESCRIPTION	ECN
04	07/14/20	BJPU	JEH	JADE	ADDED TWO P/N'S, UPDATED NOTES AND DWG FORMAT, WAS CONTROL DRAWING (A)	084605
03	9/4/14	BJPU	BJPU	ABJ	REVISED AND REDRAWN ON TEAM CENTER, NO DIMENSIONS CHANGED	4763
02	8/6/14	BJPU	BJPU	ABJ	UPDATED WITH $\pm .001''$ TOLERANCE ON PIN DIAMETER	4763
01	7/29/14	BJPU	BJPU	ABJ	UPDATED WITH CD-940-750 INFORMATION	4763
00	7/9/14	BJPU	BJPU	ABJ	RELEASE FOR KOREAN SALES	4763

TITLE INSTRUCTIONS, GAGING CD-920 / CD-940 FMY'S			
(A) CUSTOMER DRAWING			
ITEM REVISION NAME R27416AB/04		PANDUIT	
DATASET FILE NAME R27416AB_DS_TP27416B01/04 Page1			
UNLESS OTHERWISE SPECIFIED, DIMENSIONAL TOLERANCES ARE: IN (mm)			
.X ± .1 (2.54)		.XXX ± .005 (.127)	
.XX ± .01 (.25)		ANGLES ± 1°	
		THIRD ANGLE PROJECTION	
DRAWN BY BJPU	DATE 9-4-14	CHK ABJ	SCALE NONE
DRAWING NUMBER: TP27416B01			SIZE B
SHT 1 OF 7			

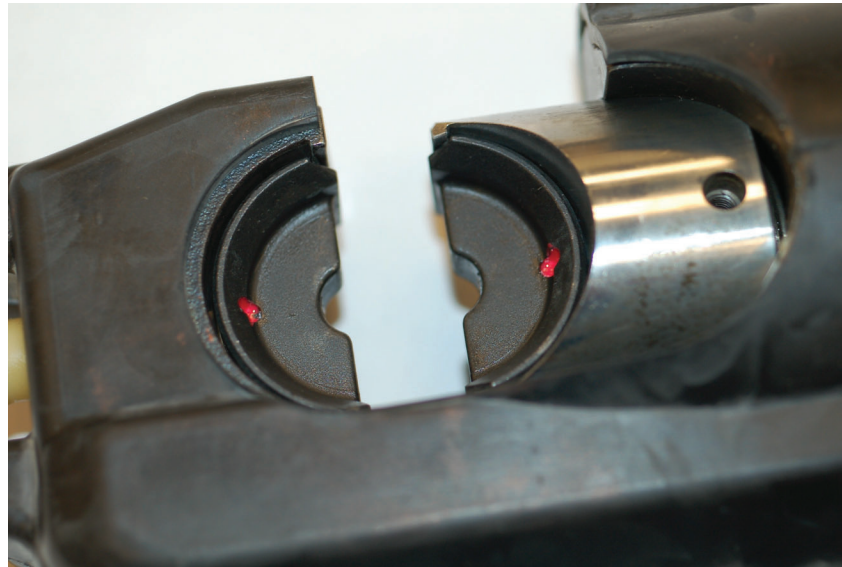




THIS COPY IS PROVIDED ON A RESTRICTED BASIS AND IS NOT TO BE USED IN ANY WAY DETRIMENTAL TO THE INTERESTS OF PANDUIT CORP.

STEP TWO

Insert the correct Crimp Die in the correct tool as shown in the picture below.



Pull the top release die button to insert the die into the non-movable (upper) portion of the tool. Push in the release button to insert the die into the moving (lower) portion of the tool. Make sure the Crimp Dies are fully engaged and aligned with each other.

REV	DATE	BY	CHK	APR	DESCRIPTION	ECN	TITLE INSTRUCTIONS, GAGING CD-920 / CD-940 DIE FMY'S CUSTOMER DRAWING				
04	07/14/20	BJPU	JEH	JADE	SEE PAGE 1 FOR DRAWING CHANGES	084605	ITEM REVISION NAME R27416AB/04				PANDUIT
03	9/4/14	BJPU	BJPU	ABJ	SEE PAGE 1 FOR DRAWING CHANGES	4763	DATASET FILE NAME R27416AB_DS_TP27416B01/04 Page2				
02	8/6/14	BJPU	BJPU	ABJ	SEE PAGE 1 FOR DRAWING CHANGES	4763	UNLESS OTHERWISE SPECIFIED, DIMENSIONAL TOLERANCES ARE: IN (mm) .X ± .1 (2.54) .XXX ± .005 (.127) .XX ± .01 (.25) ANGLES ± 5°				MATERIAL: NONE
01	7/29/14	BJPU	BJPU	ABJ	SEE PAGE 1 FOR DRAWING CHANGES	4763	THIRD ANGLE PROJECTION				DRAWING NUMBER: TP27416B01
00	7/9/14	BJPU	BJPU	ABJ	SEE PAGE 1 FOR DRAWING CHANGES	4763	DRAWN BY DATE CHK SCALE BJPU 9-4-14 ABJ NONE				SIZE B



2

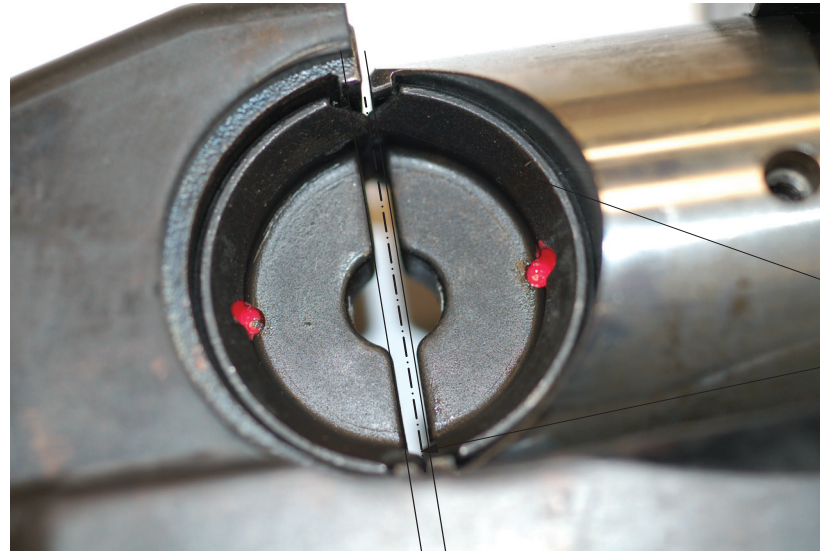


1

THIS COPY IS PROVIDED ON A RESTRICTED BASIS AND IS NOT TO BE USED IN ANY WAY DETRIMENTAL TO THE INTERESTS OF PANDUIT CORP.


STEP THREE

Close the Crimp Dies in the tool so that they are completely against one another as shown below. The jaws should be brought together so they just meet and touch. The dies should NOT be able to be moved in this position. This will confirm that there is enough force to close them, but not enough force to compress them.



Die halves touch here

Parts are aligned and under slight pressure to meet and NOT move. NOT under full tool pressure!

REV	DATE	BY	CHK	APR	DESCRIPTION	ECN	TITLE INSTRUCTIONS, GAGING CD0920 / CD-940 DIE FMY'S CUSTOMER DRAWING				DRAWING NUMBER: TP27416B01	
04	07/14/20	BJPU	JEH	JADE	SEE PAGE 1 FOR DRAWING CHANGES	084605	ITEM REVISION NAME R27416AB/04				 MATERIAL: NONE DRAWING NUMBER: TP27416B01	
03	9/4/14	BJPU	BJPU	ABJ	SEE PAGE 1 FOR DRAWING CHANGES	4763	DATASET FILE NAME R27416AB_DS_TP27416B01/04 Page3					
02	8/6/14	BJPU	BJPU	ABJ	SEE PAGE 1 FOR DRAWING CHANGES	4763	UNLESS OTHERWISE SPECIFIED, DIMENSIONAL TOLERANCES ARE: IN (mm) .X ± .1 (2.54) .XXX ± .005 (.127) .XX ± .01 (.25) ANGLES ± 5°					
01	7/29/14	BJPU	BJPU	ABJ	SEE PAGE 1 FOR DRAWING CHANGES	4763	THIRD ANGLE PROJECTION					
00	7/9/14	BJPU	BJPU	ABJ	SEE PAGE 1 FOR DRAWING CHANGES	4763	DRAWN BY DATE CHK SCALE BJPU 9-4-14 ABJ NONE				SHT 3 OF 7	
							SIZE B					

2



1

2

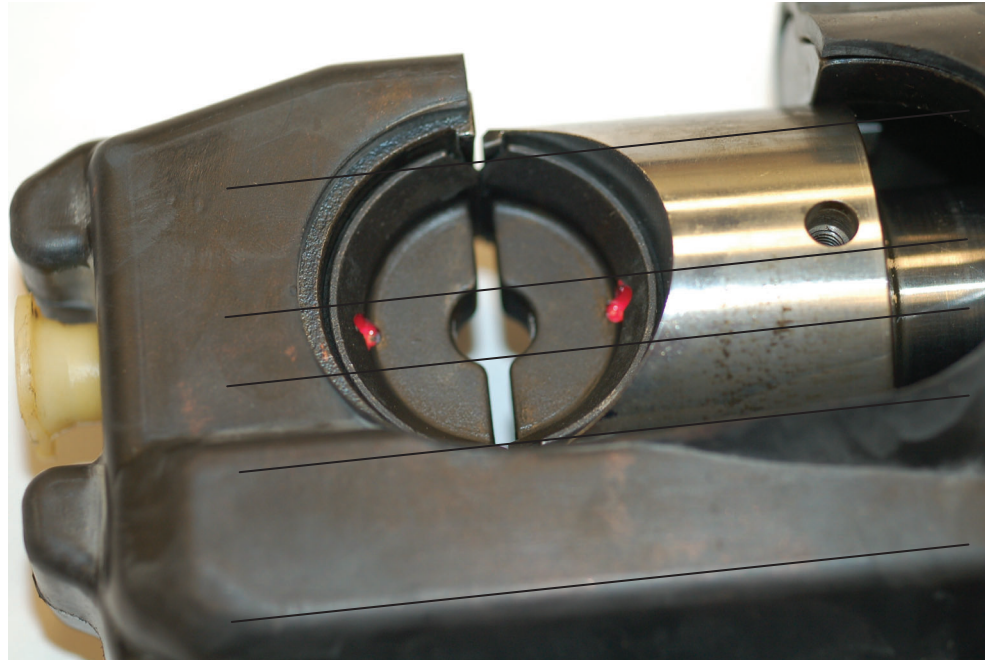


1

THIS COPY IS PROVIDED ON A RESTRICTED BASIS AND IS NOT TO BE USED IN ANY WAY DETRIMENTAL TO THE INTERESTS OF PANDUIT CORP.

STEP FOUR

Check to see if both Crimp Dies are in-line with one another and centered in the tool.



The Crimp Dies should be aligned so that the maximum diameter pin can be inserted between the dies in the tool. If they are not aligned, a false GO or NO-GO could be seen.

REV	DATE	BY	CHK	APR	DESCRIPTION	ECN	TITLE INSTRUCTIONS, GAGING CD-920 / CD-940 DIE FMY'S CUSTOMER DRAWING				DRAWING NUMBER: TP27416B01	
04	07/14/20	BJPU	JEH	JADE	SEE PAGE 1 FOR DRAWING CHANGES	084605	ITEM REVISION NAME R27416AB/04					
03	9/4/14	BJPU	BJPU	ABJ	SEE PAGE 1 FOR DRAWING CHANGES	4763	DATASET FILE NAME R27416AB_DS_TP27416B01/04 Page4					
02	8/6/14	BJPU	BJPU	ABJ	SEE PAGE 1 FOR DRAWING CHANGES	4763	UNLESS OTHERWISE SPECIFIED, DIMENSIONAL TOLERANCES ARE: IN (mm) .X ± .1 (2.54) .XXX ± .005 (.127) .XX ± .01 (.25) ANGLES ± 5°				MATERIAL: NONE	
01	7/29/14	BJPU	BJPU	ABJ	SEE PAGE 1 FOR DRAWING CHANGES	4763					DRAWING NUMBER: TP27416B01	
00	7/9/14	BJPU	BJPU	ABJ	SEE PAGE 1 FOR DRAWING CHANGES	4763					THIRD ANGLE PROJECTION	
REV	DATE	BY	CHK	APR	DESCRIPTION	ECN	DRAWN BY BJPU	DATE 9-4-14	CHK ABJ	SCALE NONE	SHT 4 OF 7	

2



1

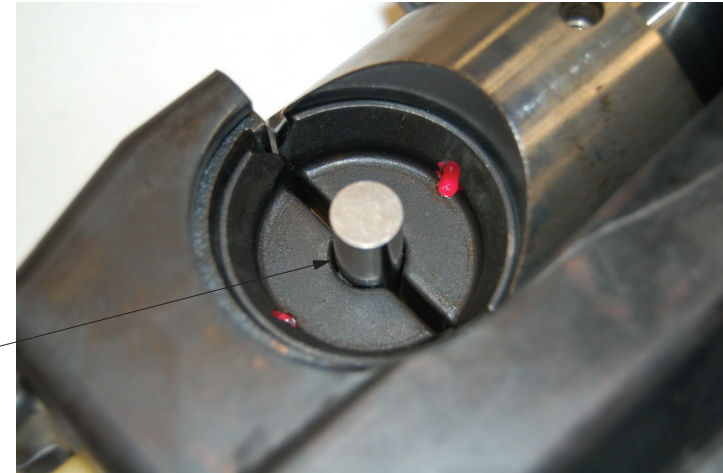


THIS COPY IS PROVIDED ON A RESTRICTED BASIS AND IS NOT TO BE USED IN ANY WAY DETRIMENTAL TO THE INTERESTS OF PANDUIT CORP.

STEP FIVE

Using the correct GO & NOGO Pin Gauges:

- a. Insert the pin gauge in the center of the Crimp Die. If checking for wear, and the correct GO pin gauge is able to pass through the center of the two Crimp Dies, then the dies are within specification.
- b. If checking to see if the Crimp Dies are over size (worn), then use the correct NO-GO pin gauge and insert it in the center of the two Crimp Dies. If the pin gauge is able to completely pass through the center of the two Crimp Dies, the Crimp Dies are out of specification and should not be used.



PIN MUST PASS THROUGH DIE SET

GO Pin gauge must pass through the center of the two dies for a PASS.
NO-GO pin gauge must NOT pass through the center of the two dies for a PASS.

GO PIN GAUGES ARE SHOWN IN BOTH PICTURES

REV	DATE	BY	CHK	APR	DESCRIPTION	ECN
04	07/14/20	BJPU	JEH	JADE	SEE PAGE 1 FOR DRAWING CHANGES	084605
03	9/4/14	BJPU	BJPU	ABJ	SEE PAGE 1 FOR DRAWING CHANGES	4763
02	8/6/14	BJPU	BJPU	ABJ	SEE PAGE 1 FOR DRAWING CHANGES	4763
01	7/29/14	BJPU	BJPU	ABJ	SEE PAGE 1 FOR DRAWING CHANGES	4763
00	7/9/14	BJPU	BJPU	ABJ	SEE PAGE 1 FOR DRAWING CHANGES	4763

TITLE INSTRUCTIONS, GAGING CD-920 / CD-940 DIE FMY'S		PANDUIT
CUSTOMER DRAWING		
ITEM REVISION NAME R27416AB/04	DRAWING NUMBER: TP27416B01	
DATASET FILE NAME R27416AB_DS_TP27416B01/04 Page5		
UNLESS OTHERWISE SPECIFIED, DIMENSIONAL TOLERANCES ARE: IN (mm)		
.X ± .1 (2.54)	.XXX ± .005 (.127)	MATERIAL: NONE
.XX ± .01 (.25)	ANGLES ± 5°	DRAWING NUMBER: TP27416B01
THIRD ANGLE PROJECTION		SIZE B
DRAWN BY BJPU	DATE 9-4-14	SCALE NONE
SHT 5 OF 7		



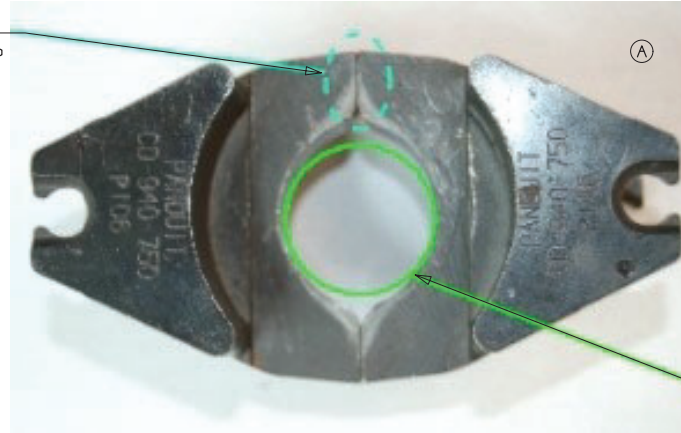


THIS COPY IS PROVIDED ON A RESTRICTED BASIS AND IS NOT TO BE USED IN ANY WAY DETRIMENTAL TO THE INTERESTS OF PANDUIT CORP.

INSTRUCTIONS FOR THE USE OF GO AND NO-GO PIN GAUGES FOR THE CD-940 STYLE CRIMP DIES

CRIMP DIES
CD-940-750 and CD-940-1000

IN THIS PICTURE, PLEASE OBSERVE THAT THE CRIMP DIES HALVES ARE ALIGNED TOP TO BOTTOM AND FRONT TO BACK. THE DIES SHOULD BE CLAMPED IN A VISE IN THIS POSITION TO MEASURE WITH GAUGE PINS. THIS CLAMPED POSITION IS RECOMMENDED WHEN CHECKING WITH GO/NOGO GAUGES.



NO SPECIAL CUSTOM GAUGES ARE CURRENTLY OFFERED. USE COMMERCIALY AVAILABLE STANDARD ROUND GAUGE PINS.

USE STANDARD ROUND PIN GAUGES
(FOR DIAMETER - SEE DIAMETER RANGE BELOW)

MEASUREMENT METHOD

1. SET UP CRIMP DIES AS SHOWN ABOVE.
2. SPECIFICATION RANGE:
 - A. FOR THE CD-940-750, THE GO/NOGO GAUGE PINS ARE .835"/.896".
 - B. FOR THE CD-940-1000, THE GO/NOGO GAUGE PINS ARE .978"/1.039".
3. THE UPPER SIZED GAGE PIN MUST NOT PASS THE DIE POCKET FORMED WHEN THE TWO HALVES ARE HELD TOGETHER. THE LOWER SIZED GAUGE PIN MUST ENTER THE DIE POCKET FORMED WHEN THE TWO HALVES ARE HELD TOGETHER.

REV	DATE	BY	CHK	APR	DESCRIPTION	ECN	TITLE INSTRUCTIONS, GAGING CD-920 / CD-940 DIE FMY'S CUSTOMER DRAWING				DRAWING NUMBER: TP27416B01	
04	07/14/20	BJPU	JEH	JADE	SEE PAGE 1 FOR DRAWINGS CHANGES (REVISED LOOK OF PAGE - CLARIFIED VIEW) (A)	084605	ITEM REVISION NAME R27416AB/04				MATERIAL: NONE	
03	9/4/14	BJPU	BJPU	ABF	SEE PAGE 1 FOR DRAWING CHANGES	4763	DATASET FILE NAME R27416AB_DS_TP27416B01/04 Page6				DRAWING NUMBER: TP27416B01	
02	8/6/14	BJPU	BJPU	ABF	SEE PAGE 1 FOR DRAWING CHANGES	4763	UNLESS OTHERWISE SPECIFIED, DIMENSIONAL TOLERANCES ARE: IN (mm) .X ± .1 (2.54) .XXX ± .005 (.127) .XX ± .01 (.25) ANGLES ± 5°				THIRD ANGLE PROJECTION	
01	7/29/14	BJPU	BJPU	ABF	SEE PAGE 1 FOR DRAWING CHANGES	4763	DRAWN BY DATE BJPU 9-4-14				SCALE NONE	
00	7/9/14	BJPU	BJPU	ABF	SEE PAGE 1 FOR DRAWING CHANGES	4763	CHK ABF				SHT 6 OF 7	
						SIZE B						



2



1

THIS COPY IS PROVIDED ON A RESTRICTED BASIS AND IS NOT TO BE USED IN ANY WAY DETRIMENTAL TO THE INTERESTS OF PANDUIT CORP.

GO AND NOGO PIN GAUGE SIZES FOR CD-920 / CD-940 STYLE CRIMP DIES

CRIMP DIE PART NUMBER	DIE COLOR CODE	DIE INDEX NUMBER	GAUGING - MAX/MIN FOR RECESSED LETTER CRIMP DIES IN INCHES		GAUGING - MAX/MIN RAISED LETTER CRIMP DIES (CD-920) IN INCHES CD-920 NEW MANUFACTURER CRIMP DIES	
			(GO)	(NO-GO)	(GO)	(NO-GO)
CD-920-8	RED	P21	.197"	.223"	.154"	.204"
CD-920-6	BLUE	P24	.237"	.263"	.174"	.224"
CD-920-4	GREY	P29	.283"	.309"	.226"	.276"
CD-920-2	BROWN	P33	.335"	.361"	.286"	.336"
CD-920-1	GREEN	P37	.377"	.403"	.336"	.386"
CD-920-1/0	PINK	P42	.427"	.453"	.364"	.414"
CD-920-2/0	BLK/GLD	P45	.449"	.475"	.396"	.446"
CD-920-3/0	ORN/TAN	P50	.517"	.543"	.426"	.476"
CD-920-4/0	PUR/OLV	P54	.567"	.593"	.506"	.556"
CD-920-250	YEL/RBY	P62	.617"	.643"	.564"	.614"
CD-920-300	WHITE	P66	.697"	.723"	.638"	.688"
CD-920-350	RED	P71	.737"	.763"	.682"	.732"
CD-920-400	BLUE	P76	.797"	.823"	.750"	.800"
CD-920-500	BROWN	P87	.903"	.929"	.844"	.894"
CD-920-500A*	PINK	P99	.819"	.845"	.746"	.796"
CD-920-600	GREEN	P94	.967"	.993"	.906"	.956"
CD-920-750*	BLACK	P106	.867"	.893"	.820"	.870"
CD-940-750*	BLACK	P106	.835"	.896"	-	-
CD-940-1000*	WHITE	P125	.978"	1.039"	-	-
(A) CD-920H-P6	ORANGE	PH6	.405"	.430"	-	-
(A) CD-920H-P2	BROWN	PH2	.572"	.588"	-	-

* THESE DIES DO NOT
BOTTOM WHEN IN THE
TOOL. THEY MUST BE
PIN GAUGED IN VISE
LIKE CLAMP. SEE SHT
6 FOR DETAILS.

REV	DATE	BY	CHK	APR	DESCRIPTION	ECN	TITLE INSTRUCTIONS, GAGING CD-920 / CD-940 DIE FMY'S CUSTOMER DRAWING				DRAWING NUMBER: TP27416B01	
04	07/14/20	BJPU	JEH	JADE	SEE PAGE 1 FOR DRAWING CHANGES (ADDED 2 P/W'S) (A)	084605	ITEM REVISION NAME R27416AB/04				SIZE B	
03	9/4/14	BJPU	BJPU	ABJ	SEE PAGE 1 FOR DRAWING CHANGES	4763	DATASET FILE NAME R27416AB_DS_TP27416B01/04 Page7				MATERIAL: NONE	
02	8/6/14	BJPU	BJPU	ABJ	SEE PAGE 1 FOR DRAWING CHANGES	4763	UNLESS OTHERWISE SPECIFIED, DIMENSIONAL TOLERANCES ARE: IN (mm) .X ± .1 (2.54) .XXX ± .005 (.127) .XX ± .01 (.25) ANGLES ± 5°				DRAWING NUMBER: TP27416B01	
01	7/29/14	BJPU	BJPU	ABJ	SEE PAGE 1 FOR DRAWING CHANGES	4763	THIRD ANGLE PROJECTION				SHT 7 OF 7	
00	7/9/14	BJPU	BJPU	ABJ	SEE PAGE 1 FOR DRAWING CHANGES	4763	DRAWN BY DATE BJPU 9-4-14				SCALE NONE	

2



1