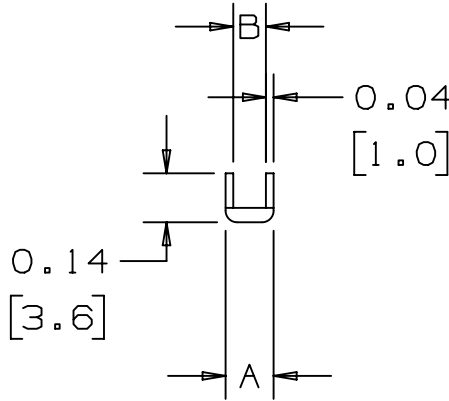
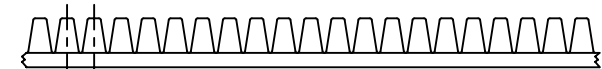
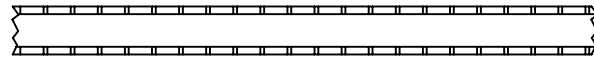


THIS COPY IS PROVIDED ON A RESTRICTED BASIS AND IS NOT TO BE USED IN ANY WAY DETRIMENTAL TO THE INTERESTS OF PANDUIT CORP.



PANDUIT PART NO. *	PLASTIC DIM. in (mm)		MAX. PANEL THICKNESS
	A	B	
GEE47N-C	0.13 (3.2)	0.05 (1.2)	.0394-.0551 (1.0-1.4)
GEE55N-C	0.13 (3.4)	0.06 (1.4)	.0472-.0630 (1.2-1.6)
GEE71N-C	0.15 (3.8)	0.07 (1.8)	.0630-.0787 (1.6-2.0)
GEE98N-C	0.18 (4.6)	0.10 (2.6)	.0906-.1063 (2.3-2.7)
GEE134N-C	0.21 (5.3)	0.13 (3.4)	.1260-.1417 (3.2-3.6)



NOTES:

- 1) GEE 47 N - C
 - 100 FEET PER PACKAGE
 - NYLON
 - MAX. PANEL THICKNESS
 - SLIT WALL GROMMET EDGING
- 2) COLOR -- NATURAL (CLEAR TO MILKY WHITE)
- 3) SLOTTED WALL NYLON EDGING SHOULD BE USED TO DRESS INSIDE PANEL CUT OUTS, AND IS NOT RECOMMENDED FOR OUTSIDE PANEL EDGES.

(DIMENSIONS IN PARENTHESES ARE IN METRIC.)

CAD FILENAME/LAYERS G03597LX_DC_G00239FV-DC_03A.PRT



CORP. TINLEY PARK, ILLINOIS

NYLON GROMMET EDGING -- GEE
(CUSTOMER DRAWING)

REV	DATE	BY	CHK	DESCRIPTION	ECN	R	CUST	SUP	CHG'D	DRAWN BY	DATE	MAT'L	SCALE	DRAWING NO.	DWG SIZE
3	7/18/12	LEF	VJS	A: ADDED "CLEAR TO MILKY WHITE" TO NOTE #2 B: CHANGED PLASTIC DIM. A 5.4 TO 5.3 ON PART GEE134N-C	GB0239FV	3	RAMI			UNLESS OTHERWISE SPECIFIED, DIMENSIONAL TOLERANCES ARE: (.X) ± ---- (.XXX) ± ---- (.XX) ± .015 (.38) ANGLES ± ----		NYLON	NONE	GB0239FV	A
2	4/8/02	LGG		CHG REV 1 RELEASE DATE. TYPING ERROR WAS 3/26/01 S/B 3/26/02	GB0239FV	2									
1	3/26/02	LGG		UPDATED PANEL THICKNESS (SEE ECN)	GB0239FV	1									
R	8-5-98	CPE		CHANGED CAD FILENAME AND ADDED NOTE #3.	GB0239FV	R					5-5-87				

UNLESS OTHERWISE SPECIFIED,
ALL DIMENSIONS ARE GIVEN
IN INCHES, THIRD ANGLE PROJECTION.

DWG SIZE A