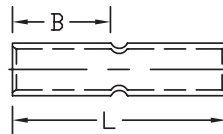
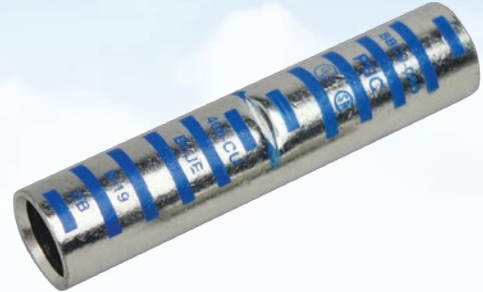


Crimp Splice - Long Barrel

Type BBCU

- Manufactured from high conductivity seamless copper tubing
- Tin-plated to inhibit corrosion
- Beveled entry for easy cable insertion
- Positive cable stops to ensure proper insertion of conductors to full depth
- Color coded barrels are marked with die index numbers
- Long barrel provides high pull out force and added secureness for improved mechanical and electrical properties
- Connectors are suitable for voltages up to 35 KV if taped according to accepted practices, 5 KV is the maximum voltage level in all bare splice applications
- Connectors are UL listed and CSA certified with Penn-Union, Burndy T&B, Huskie, Greenlee and Versa-Crimp® style tooling



BBCU DIMENSIONS & INSTALLATION TOOLING INFORMATION

CATALOG NUMBER	COPPER CONDUCTOR SIZE	FIGURE DIMENSIONS (IN.)		COLOR CODE	INSTALLATION TOOLING			WIRE STRIP LENGTH
		INSERTION LENGTH "B"	OVERALL LENGTH "L"		PENN-UNION DIELESS MECHANICAL TOOLS	BURNDY DIE INDEX NO.	PENN-UNION DIE CATALOG NO.	
BBCU-8	8 AWG	.99	1.98	Red	TDM-250 or TDM-500	6	T-49	1-1/8"
BBCU-6	6 AWG	1.19	2.37	Blue		7	T-7	1-5/16"
BBCU-4	4 AWG	1.09	2.38	Gray		8	T-8	1-3/16"
BBCU-3	3 AWG	1.13	2.38	White		9	T-9	1-1/4"
BBCU-2	2 AWG	1.22	2.63	Brown		10	T-10	1-3/8"
BBCU-1	1 AWG	1.38	2.88	Green		11	T-11	1-1/2"
BBCU-1/0	1/0 AWG	1.38	2.88	Pink		12	T-12	1-1/2"
BBCU-2/0	2/0 AWG	1.50	3.12	Black		13	T-13	1-5/8"
BBCU-3/0	3/0 AWG	1.50	3.13	Orange		14	T-14	1-5/8"
BBCU-4/0	4/0 AWG	1.63	3.38	Purple		15	T-15	1-3/4"
BBCU-025	250 kcmil	1.59	3.38	Yellow		16	T-16	1-3/4"
BBCU-030	300 kcmil	2.00	4.13	White		17	T-17	2-1/8"
BBCU-035	350 kcmil	2.00	4.13	Red		18	T-18	2-1/8"
BBCU-040	400 kcmil	2.13	4.38	Blue		19	T-19	2-1/4"
BBCU-050	500 kcmil	2.25	4.63	Brown		20	T-20	2-3/8"
BBCU-060	600 kcmil	2.69	5.50	Green		22	T-22	2-13/16"
BBCU-065	650 kcmil	2.75	5.63	Pink	300	T-300	2-7/8"	
BBCU-075	750 kcmil	2.88	5.88	Black	24	T-24	3"	
BBCU-080	800 kcmil	2.91	6.00	Orange	25	T-25P	3-1/16"	
BBCU-100	1000 kcmil	3.00	6.13	White	27	T-27P	3-1/8"	
BBCU-150	1500 kcmil	3.19	6.50	Green	31	T-31P	3-5/16"	
BBCU-200	2000 kcmil	3.41	7.00	Brown	34	-	3-9/16"	

- Connectors from 8 AWG - 2000 kcmil are UL listed per UL486A-B and CSA certified per C22.2 No.65 for POWER applications
- Connectors from 8 AWG - 500 kcmil are UL listed for grounding, bonding and direct burial applications per UL467
- Connectors from 8 AWG - 250 kcmil are CSA certified for grounding, bonding and direct burial applications per C22.2 No.41