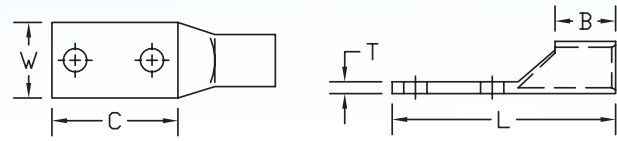


COPPER COMPRESSION LUGS

Standard Barrel - Two Hole Tongue with Inspection Window Type BLU-D



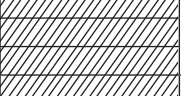


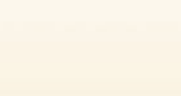
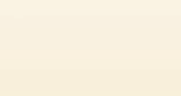
- Manufactured from high conductivity seamless copper tubing
- Tin-plated to inhibit corrosion
- Beveled entry for easy cable insertion
- Inspection window to ensure full cable insertion
- Two hole mounting pad assures maximum secureness
- Color coded barrels are marked with die index numbers
- Connectors are suitable for voltages up to 35 KV
- 45° and 90° angles are UL listed and CSA certified
- Connectors are UL listed and CSA certified with Penn-Union, Burndy, T&B, Huskie, Greenlee and Versa-Crimp® style tooling



BLU-D DIMENSIONS & INSTALLATION TOOLING INFORMATION

CATALOG NUMBER	COPPER CONDUCTOR SIZE	STUD HOLE SIZE	FIGURE DIMENSIONS (IN.)						INSTALLATION TOOLING				
			STUD HOLE SPACING	TONGUE WIDTH "W"	TONGUE LENGTH "C"	TONGUE THICKNESS "T"	BARREL LENGTH "B"	OVERALL LENGTH "L"	COLOR CODE	PENN-UNION DIELESS MECHANICAL TOOLS	BURNDY DIE INDEX NO. /TOOL	PENN-UNION DIE CATALOG NO.	WIRE STRIP LENGTH
BLU-8D2TC10	8 AWG	#10	.63	.37	1.13	.08	.41	1.78	Red	TDM-250 or TDM-500	6	T-49	1/2"
BLU-8D2TC14		1/4"	.63	.41	1.22	.08	.41	1.88					
BLU-8D2TC14E2		1/4"	.75	.41	1.36	.08	.41	2.01					
BLU-8D2TC14E1		1/4"	1.00	.41	1.61	.08	.41	2.26					
BLU-8D2TC38		3/8"	1.00	.60	1.75	.08	.57	2.53					
BLU-6D2TC10	6 AWG	#10	.63	.41	1.22	.09	.81	2.25	Blue	TDM-250 or TDM-500	7	T-7	15/16"
BLU-6D2TC14		1/4"	.63	.41	1.22	.09	.81	2.25					
BLU-6D2TC14E2		1/4"	.75	.41	1.36	.09	.81	2.42					
BLU-6D2TC14E1		1/4"	1.00	.41	1.61	.09	.81	2.67					
BLU-6D2TC516E2		5/16"	.75	.61	1.47	.06	.81	2.54					
BLU-6D2TC516		5/16"	1.00	.59	1.74	.06	.60	2.49					
BLU-6D2TC38		3/8"	1.00	.61	1.83	.06	.81	2.90					
BLU-6DN	1/2"	1.75	.81	2.88	.06	.81	3.95						
BLU-5D2TC10	5 AWG	#10	.63	.44	1.22	.08	.81	2.25	Blue	TDM-250 or TDM-500	7	T-7	15/16"
BLU-5D2TC14		1/4"	.63	.44	1.22	.08	.81	2.25					
BLU-5D2TC14E1		1/4"	1.00	.44	1.60	.08	.81	2.67					
BLU-5D2TC38		3/8"	1.00	.44	1.67	.08	.81	2.73					
BLU-5D2		1/2"	1.75	.81	2.95	.10	.81	4.08					
BLU-4D2TC14	4 AWG	1/4"	.63	.50	1.22	.09	.81	2.33	Gray	TDM-250 or TDM-500	8	T-8	15/16"
BLU-4D2TC14E2		1/4"	.75	.50	1.36	.09	.81	2.43					
BLU-4D2TC14E1		1/4"	1.00	.50	1.61	.09	.81	2.68					
BLU-4D2TC516		5/16"	1.00	.61	1.70	.08	.81	2.78					
BLU-4D2TC38		3/8"	1.00	.61	1.81	.08	.81	2.87					
BLU-4D1		1/2"	1.75	.92	2.83	.10	.81	3.90					
BLU-3D2TC14	3 AWG	1/4"	.63	.65	1.22	.20	.88	2.32	White	TDM-250 or TDM-500	9	T-9	1"
BLU-2D2TC14	2 AWG	1/4"	.63	.59	1.22	.11	.88	2.32	Brown	TDM-250 or TDM-500	10	T-10	1"
BLU-2D2TC14E2		1/4"	.75	.59	1.36	.11	.88	2.50					
BLU-2D2TC14E1		1/4"	1.00	.59	1.56	.11	.88	2.67					
BLU-2D2TC38		3/8"	1.00	.59	1.83	.11	.88	2.96					
BLU-2D2		1/2"	1.75	.81	2.88	.09	.88	3.98					
BLU-1D2TC14	1 AWG	1/4"	.63	.67	1.22	.10	.94	2.41	Green	TDM-250 or TDM-500	11	T-11	1-1/16"
BLU-1D2TC516E6		5/16"	.88	.67	1.62	.10	.94	2.79					
BLU-1D5		1/2"	1.75	.70	2.71	.09	.83	3.69					
BLU-1/0D2TC14	1/0 AWG	1/4"	.63	.74	1.22	.11	.88	2.44	Pink	TDM-250 or TDM-500	12	T-12	1"
BLU-1/0D2TC14E2		1/4"	.75	.74	1.36	.11	.88	2.58					
BLU-1/0D2TC516E6		5/16"	.88	.74	1.62	.11	.88	2.81					

BLU-D DIMENSIONS & INSTALLATION TOOLING INFORMATION (continued)

CATALOG NUMBER	COPPER CONDUCTOR SIZE	STUD HOLE SIZE	FIGURE DIMENSIONS (IN.)						INSTALLATION TOOLING				WIRE STRIP LENGTH
			STUD HOLE SPACING	TONGUE WIDTH "W"	TONGUE LENGTH "C"	TONGUE THICKNESS "T"	BARREL LENGTH "B"	OVERALL LENGTH "L"	COLOR CODE	PENN-UNION DIELESS MECHANICAL TOOLS	BURNDY DIE INDEX NO. /TOOL	PENN-UNION DIE CATALOG NO.	
BLU-1/0D2TC516	1/0 AWG	5/16"	1.00	.74	1.72	.11	.88	2.94	Pink	TDM-250 or TDM-500	12	T-12	1"
BLU-1/0D2TC38		3/8"	1.00	.74	1.83	.11	.88	3.02					
BLU-1/0D2NTC38		3/8"	1.75	.74	2.58	.11	.88	3.77					
BLU-1/0D2		1/2"	1.75	.82	2.82	.10	.89	3.98					
BLU-2/0D2TC14	2/0 AWG	1/4"	.63	.82	1.22	.12	.94	2.50	Black	TDM-250 or TDM-500	13	T-13	1-1/16"
BLU-2/0D2TC14E2		1/4"	.75	.82	1.36	.12	.94	2.64					
BLU-2/0D2TC14E1		1/4"	1.00	.82	1.61	.12	.94	2.89					
BLU-2/0D2TC516E6		5/16"	.88	.82	1.62	.12	.94	2.88					
BLU-2/0D2TC516E		5/16"	1.00	.82	1.72	.12	.94	3.00					
BLU-2/0D2TC38		3/8"	1.00	.82	1.83	.12	.94	3.08					
BLU-2/0D		1/2"	1.75	.82	2.88	.12	.94	4.13					
BLU-3/0D2TC14E2	3/0 AWG	1/4"	.75	.89	1.36	.13	1.00	2.77	Orange	TDM-250 or TDM-500	14	T-14	1-1/8"
BLU-3/0D11		5/16"	.88	.89	1.62	.13	1.00	3.00					
BLU-3/0D2TC516		5/16"	1.00	.89	1.72	.13	1.00	3.13					
BLU-3/0D2TC38		3/8"	1.00	.89	1.83	.13	1.00	3.24					
BLU-3/0D6		1/2"	1.00	.89	2.13	.13	1.00	3.50					
BLU-3/0D		1/2"	1.75	.89	2.88	.13	1.00	4.25					
BLU-4/0D2TC14E2	4/0 AWG	1/4"	.75	1.00	1.36	.14	1.00	2.83	Purple	TDM-250 or TDM-500	15	T-15	1-1/8"
BLU-4/0D2TC14E1		1/4"	1.00	1.00	1.61	.14	1.00	3.08					
BLU-4/0D2TC516		5/16"	1.00	1.00	1.72	.14	1.00	3.18					
BLU-4/0D2TC38		3/8"	1.00	1.00	1.83	.14	1.00	3.30					
BLU-4/0D		1/2"	1.75	1.00	2.88	.14	1.00	4.31					
BLU-025D2TC38	250 kcmil	3/8"	1.00	1.09	1.83	.16	1.06	3.43	Yellow	TDM-250 or TDM-500	16	T-16	1-3/16"
BLU-025D		1/2"	1.75	1.09	2.88	.16	1.06	4.44					
BLU-030D2TC14	300 kcmil	1/4"	.63	1.19	1.27	.16	1.03	2.82	White	TDM-500	17	T-17	1-3/16"
BLU-030D2TC516		5/16"	1.00	1.19	1.72	.16	1.06	3.37					
BLU-030D2TC38		3/8"	1.00	1.19	1.83	.16	1.06	3.50					
BLU-030D2		1/2"	1.00	1.19	2.06	.16	1.06	3.75					
BLU-030D		1/2"	1.75	1.19	2.88	.16	1.06	4.50					
BLU-035D2TC14E2	350 kcmil	1/4"	.75	1.28	1.36	.17	1.13	3.14	Red	TDM-500	18	T-18	1-1/4"
BLU-035D2NTC516		5/16"	1.75	1.28	2.88	.17	1.13	4.63					
BLU-035D2TC38		3/8"	1.00	1.28	1.83	.17	1.13	3.61					
BLU-035D2TC12		1/2"	1.25	1.28	2.40	.17	1.13	4.18					
BLU-035D		1/2"	1.75	1.28	2.88	.17	1.13	4.63					
BLU-040D2TC516	400 kcmil	5/16"	1.00	1.39	1.72	.19	1.19	3.63	Blue	TDM-500	19	T-19	1-5/16"
BLU-040D2TC38		3/8"	1.00	1.39	1.83	.19	1.19	3.74					
BLU-040D		1/2"	1.75	1.39	2.88	.19	1.19	4.75					
BLU-045D	450 kcmil	1/2"	1.75	1.45	2.88	.21	1.18	4.75	Blue	TDM-500	19	T-19	1-5/16"
BLU-050D2TC14E2	500 kcmil	1/4"	.75	1.53	1.36	.21	1.38	3.52	Brown	TDM-500	20	T-20	1-1/2"
BLU-050D2TC38		3/8"	1.00	1.53	1.83	.21	1.38	3.99					
BLU-050D2TC12		1/2"	1.25	1.53	2.40	.21	1.38	4.56					
BLU-050D		1/2"	1.75	1.53	2.88	.21	1.38	5.00					
BLU-060D2TC38	600 kcmil	3/8"	1.00	1.72	1.83	.27	1.38	4.08	Green		22	T-22	1-1/2"
BLU-060D		1/2"	1.75	1.72	2.88	.27	1.38	5.09					
BLU-065D-2TC38	650 kcmil	3/8"	1.00	1.78	1.83	.27	1.38	4.08	Pink		300	T-300	1-5/8"
BLU-065D2TC12		1/2"	1.25	1.78	2.40	.27	1.38	4.65					
BLU-065D		1/2"	1.75	1.78	2.88	.27	1.38	5.09					
BLU-075D2TC38	750 kcmil	3/8"	1.00	1.91	1.83	.27	1.63	4.43	Black		24	T-24	1-3/4"
BLU-075D2TC12E3		1/2"	1.50	1.91	2.65	.27	1.63	5.25					
BLU-075D		1/2"	1.75	1.91	2.88	.27	1.63	5.44					
BLU-080D2TC38	800 kcmil	3/8"	1.00	1.97	1.83	.25	1.63	4.49	Orange		25	-	1-3/4"
BLU-080D		1/2"	1.75	1.97	2.88	.25	1.63	5.53					
BLU-100D2TC38	1000 kcmil	3/8"	1.00	2.17	1.83	.33	1.88	4.83	White		27	T-27P	2"
BLU-100D2TC12		1/2"	1.25	2.17	2.40	.33	1.88	5.40					
BLU-100D		1/2"	1.75	2.17	2.88	.33	1.88	5.87					
BLU-150D	1500 kcmil	1/2"	1.75	2.69	2.88	2.87	2.00	6.09	Green		31	T-31P	2-1/8"
BLU-200D	2000 kcmil	1/2"	1.75	3.06	2.88	.47	2.00	6.38	Brown		34	-	-

• For 45° or 90° BENT TONGUES add suffix "-45" for 45 deg. or "-90" for 90 deg. to the catalog number

• Connectors from 8 AWG - 2000 kcmil are UL listed per UL486A-B and CSA certified per C22.2 No.65 for POWER applications

• Connectors from 8 AWG - 500 kcmil are UL listed for grounding, bonding and direct burial applications per UL467

• Connectors from 8 AWG - 250 kcmil are CSA certified for grounding, bonding and direct burial applications per C22.2 No.41