

## Aluminum Dual Rated Lugs - Two Hole Tongue Type LA-2

For use with one copper or aluminum conductor

- Manufactured from high strength aluminum alloy extrusion
- Electro-tin plated to ensure minimum contact resistance and protection against corrosion when used with copper wire
- Two hole mounting pad allows for maximum surface contact in heavy duty applications
- Connectors are rated for 600 V, 90°C applications
- The use of oxide inhibitor is recommended for all aluminum terminations



486A-486B  
LISTED  
AL9CU

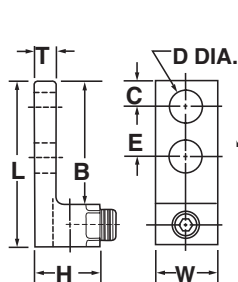


FIG. 1

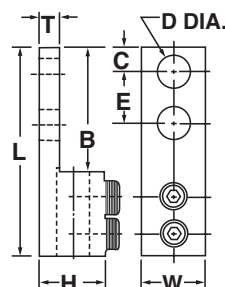


FIG. 2

CATALOG NUMBER	FIG. NO.	CONDUCTOR RANGE	APPROXIMATE DIMENSIONS (IN.)								MTG. BOLT SIZE	HEX SIZE
			L	W	H	T	B	C	D (DIA.)	E		
LA-350-2	1	6 Str. - 350 kcmil	4.19	1.13	1.25	.25	3.06	.63	.56	1.75	1/2	3/8
LA-600-2	1	2 Str. - 600 kcmil	4.69	1.50	1.56	.44	3.31	.63	.56	1.75		3/8
LA-800-2	2	350 - 800 kcmil	6.19	1.75	1.88	.56	3.44	.63	.56	1.75		1/2
LA-1000-2	2	500 - 1000 kcmil	6.19	1.75	1.88	.56	3.44	.63	.56	1.75		1/2