



### Model Number

**NJ1.5-PD-E02-1.250-V95**

Proximity switch

### Features

- 4-wire DC
- Weld Immune
- Sensing range 1.5 mm
- 3000 psi rating

### Accessories

**V95-G-YE2M-STOOW**

Female cordset, 7/8" - 16 UNF, 5-pin, PUR cable

## Technical Data

### General specifications

Switching element function		NPN & PNP, NO
Rated operating distance	$s_n$	1.5 mm
Installation		flush
Output polarity		DC
Assured operating distance	$s_a$	0 ... 1.21 mm
Reduction factor $r_{Al}$		0.4
Reduction factor $r_{304}$		0.85

### Nominal ratings

Operating voltage	$U_B$	10 ... 30 V DC
Switching frequency	$f$	30 Hz
Hysteresis	$H$	10 ... 20 typ. 15 %
Reverse polarity protection		yes
Short-circuit protection		yes
Voltage drop	$U_d$	

		$\leq 2$ V DC
Operating current	$I_L$	$\leq 200$ mA
Off-state current	$I_r$	

		$\leq 100$ $\mu$ A
No-load supply current	$I_0$	

		$\leq 35$ mA
Mag. Field strength, AC fields		250 mT
Mag. Field strength, DC fields		100 mT

### Limit data

Operating pressure dynamically		3000 psi
--------------------------------	--	----------

### Indicators/operating means

LED green		Power on
LED yellow		Output status

### Standard conformity

Standards		EN 60947-5-2
-----------	--	--------------

### Ambient conditions

Ambient temperature		-25 ... 70 °C (-13 ... 158 °F)
---------------------	--	--------------------------------

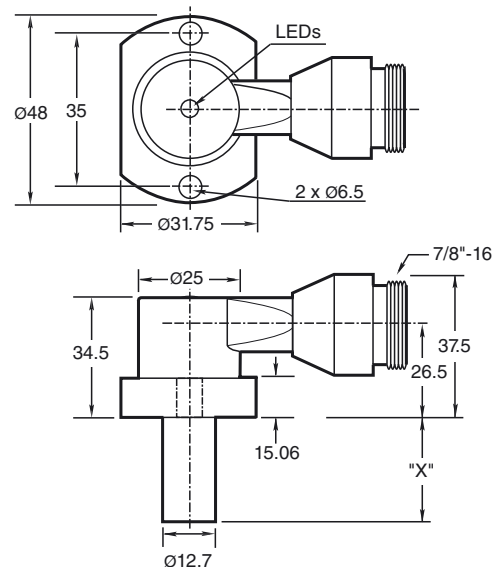
### Mechanical specifications

Connection type		Connector 7/8"-16 UN , 5-pin
Degree of protection		IP67
Material		Housing: zinc Probe: aluminum
Note		X = 1.250 in (31.8 mm)

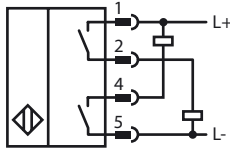
### Approvals and certificates

UL approval		cULus Listed, General Purpose
CSA approval		cCSAus Listed, General Purpose

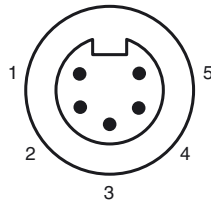
## Dimensions



## Electrical Connection



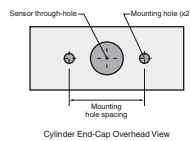
## Pinout



### Wire colors

1	WH
2	RD
4	OR
5	BK

**NPT Type Mounting Holes:**  
1000 and 3000 psi NPT Types:  
Mounting hole screw thread  
shall be 1/4" - 20.  
Minimum thread engagement  
depth is 0.250" (6.35 mm)  
Hole spacing is 35 mm  
center to center.



**Mounting Screws:**  
Standard 1000 and 3000 psi  
models use two, self-locking 1/4" - 20 socket head cap  
screws (provided).  
Recommended tightening torque: 150 in lb (16.95 N-m).

**Important:** When using spacers, make  
certain to maintain the 0.250" (6.35 mm) minimum  
mounting screw thread engagement.