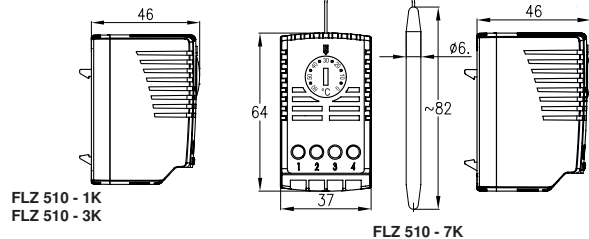


FLZ 510

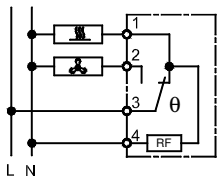


FLZ 510 - 1K
FLZ 510 - 3K

FLZ 510 - 7K

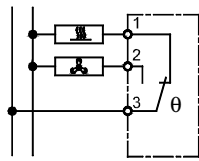


Montage
Assembly
Montage
Montage
Montering
Montaggio
Montaje
Монтаж



FLZ 510, 1K

nur / only / seulement / slechts 230V AC
endast / soltanto / solamente / только 230V AC



FLZ 510-3K / FLZ 510 - 7K

Thermostat FLZ 510 (two-way contact – CO) Instructions for Use

FLZ 510 – 1K (thermal return)	FLZ 510 – 3K	FLZ 510 – 7K (with capillary sensor)
Setting ranges -20°C .. +40°C / -5°F .. +105°F	0°C .. +60°C / +30°F .. +140°F	+20°C .. +80°C / +70°F .. +180°F
Working temperature range	-20°C .. +80°C / -5°F .. +180°F	
Max. breaking capacity Value in brackets: inductive load at cos.φ=0.6	Heating: 100V .. 250V AC / 10(2)A Cooling: 100V .. 250V AC / 5(2)A DC: max. 30W	
Breaking temperature difference	1K / 3K / 7K (Capillary controller)	
Tolerance for switching point	±/ 3K	
Type of contact	Two-way contact – CO (spring contact)	
Sensor	bimetal or remote sensor with 1.5 capillary	
Type of connection	0.5 ... 2.5mm² screw clamps	
Colour	RAL 7035 – grey	
Protection category	IP 20	
Assembly	Snap fastening for 35mm profile bars in accordance with EN 60715	

Application:

The thermostats are used for the temperature regulation of cooling units, heating appliances, filter ventilators and heat exchangers inside switch cabinets. They detect the adjusted ambient air and open the heat contact and close the cool contact at an increasing temperature.

Safety instructions

The thermostats may only be installed by qualified staff. The protective measures and the protection against contact are to be ensured by the installation. The information on the name plate (voltage and current) is to be heeded.

The operational reliability of the thermostat is to be ensured by an operating test.

Installation instructions:

- The thermostat should be assembled in the upper part of the switch cabinet at the maximum possible distance from heat creating components.
- The ventilation slots of the thermostat should not be covered.
- When using the two-way contact as an opener for the temperature setting the highest possible hysteresis must be added to the required minimum temperature.

For example:
- required minimum temperature inside switch cabinet: 10°C (50°F)
- temperature to be set: 15°C (59°F)
- resulting from: 15°C (59°F) = required temperature 10°C + highest possible hysteresis 4K (1K+3K)



FLZ 510

gebruikstemperatuur	
Verschil schakeltemperatuur	
schakelpunttolerantie	
contacttype	
Sensor	
Type aansluiting	
kleur	
beveiliging	

Toep _____

V _____

Mont _____

--	--

-20°C .. +80°C / -5°F .. +180°F



1K / 3K / 7K (capillaire regelaar)
±/ 3K
wisselaar - CO (sprongcontact)
bimetaal of afstandsensor met 1,5m capillair
0,5 ... 2,5mm² schroefklemmen
RAL 7035 – grijs
IP 20

D Betriebsanleitung Thermostat FLZ 510 (Wechsler - CO)

F Instructions d'emploi du Thermostat FLZ 510 (Contact à deux directions - CO)

S Bruksanvisning termostat FLZ 510 (Växlare – CO)