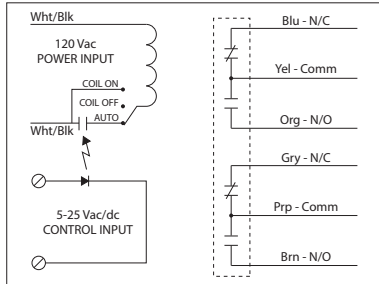


LOW COIL INPUT RELAYS

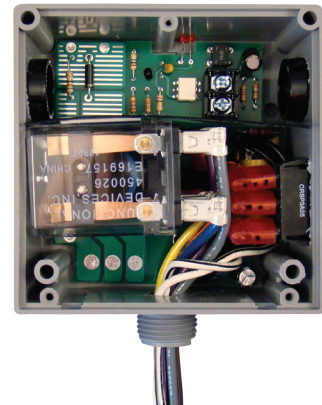
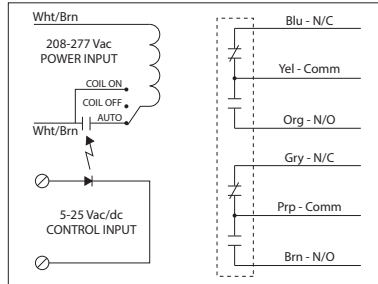
RIBTE01P-S

Enclosed Relay Hi/Low Separation 20 Amp DPDT
 +Override, **120 Vac Power Input** + 5-25 Vac/dc
 Control Input



RIBTE02P-S

Enclosed Relay Hi/Low Separation 20 Amp DPDT
 +Override, **208-277 Vac Power Input** +
 5-25 Vac/dc Control Input



RELAYS

SPECIFICATIONS

Power Input: 120 Vac, 50-60 Hz (RIBTE01P-S)
 208-277 Vac, 50-60 Hz (RIBTE02P-S)
Control Input: 5-25 Vac/dc, 50-60 Hz
Relays & Contact Type: One (1) DPDT Continuous Duty Coil
Expected Relay Life: 10 million cycles minimum mechanical
Operating Temperature: -30 to 140° F
Humidity Range: 5 to 95% (noncondensing)
Operate Time: 18ms
Relay Status: LED On = Activated
Dimensions: 4.00" x 4.00" x 1.80" with .50" NPT Nipple
Wires: 16", 600V Rated
Approvals: UL Listed, UL916, UL864, C-UL California
 State Fire Marshal
Housing Rating: UL Accepted for Use in Plenum, NEMA 1
Gold Flash: Yes
Override Switch: Yes*

Contact Ratings:
 20 Amp Resistive @ 300 Vac
 20 Amp Resistive @ 28 Vdc
 15 Amp Resistive @ 600 Vac
 20 Amp Ballast @ 277-480 Vac
Not rated for Electronic Ballast
 770 VA Pilot Duty @ 120 Vac
 1158 VA Pilot Duty @ 240 Vac
 1110 VA Pilot Duty @ 277 Vac
 1640 VA Pilot Duty @ 480 Vac
 3 HP @ 480-600 Vac
 2 HP @ 240-277 Vac
 1 HP @ 120 Vac

Control Input Ratings:

.4 mA @ 5 Vdc
 .9 mA @ 10 Vdc
 1 mA @ 12 Vdc
 2 mA @ 24 Vdc
 3 mA @ 24 Vac
 (Non Polarized)

Power Input Ratings:

105 mA @ 120 Vac (RIBTE01P-S)
 105 mA @ 208-277 Vac (RIBTE02P-S)

Notes:

- Override capability is made possible by supplying constant voltage on the Power Input. No Control Input Voltage is necessary to override the relay. *