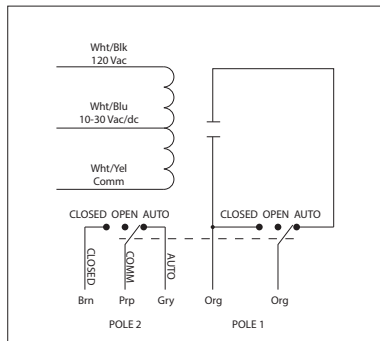


10 AMP PILOT CONTROL RELAYS

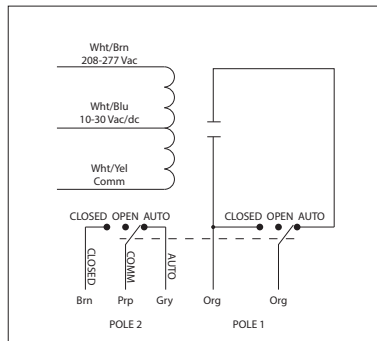
RIBU1SM-250

Enclosed Relay 10 Amp SPST-N/O + Override
+ Monitor with 10-30 Vac/dc/**120 Vac Coil**



RIBH1SM-250

Enclosed Relay 10 Amp SPST-N/O + Override
+ Monitor with 10-30 Vac/dc/**208-277 Vac Coil**



RELAYS

SPECIFICATIONS

Relays & Contact Type: One (1) SPST Continuous Duty Coil
Expected Relay Life: 10 million cycles minimum mechanical
Operating Temperature: -30 to 140° F
Humidity Range: 5 to 95% (noncondensing)
Operate Time: 20ms
Relay Status: LED On = Activated
Dimensions: 2.30" x 3.20" x 1.80" with .50" NPT nipple
Wires: 16", 600V Rated
Approvals: UL Listed, UL916, UL864, C-UL California State Fire Marshal
Housing Rating: UL Accepted for Use in Plenum, NEMA 1
Gold Flash: Yes
Override Switch: Yes + Monitor

Contact Ratings:
 10 Amp Resistive @ 120/250 Vac
 345 VA Pilot Duty @ 120/240 Vac
 211 VA Pilot Duty @ 120/240 Vac
 1/3 HP @ 120-240 Vac (N/O)
 1/6 HP @ 120-240 Vac (N/C)

Coil Current:
 55 mA @ 30 Vac
 28 mA @ 120 Vac (RIBU1SM-250)
 39 mA @ 208-277 Vac (RIBH1SM-250)
 20 mA @ 30 Vdc

Coil Voltage Input:
 10-30 Vac/dc ; 120 Vac ; 50-60 Hz (RIBU1SM-250)
 10-30 Vac/dc ; 208-277 Vac ; 50-60 Hz (RIBH1SM-250)
 Drop Out = 2.1 Vac / 2.8 Vdc
 Pull In = 9 Vac / 10 Vdc

Notes:

- Second pole of override switch can be connected to digital-in of controller to report position of override switch
- Rating of second pole is 250 Vac max and 5 Amp max
- Order Normally Closed by adding "-NC" to end of model number