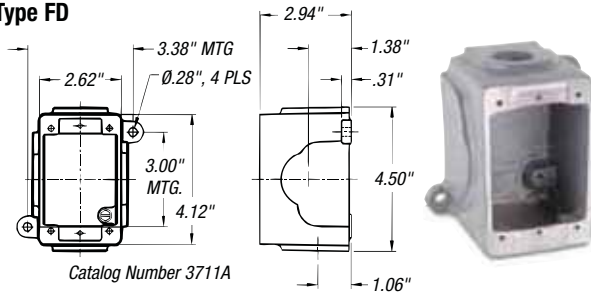


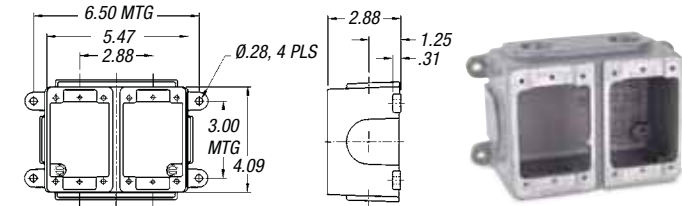
DuraGard® Waterproof Connections

Conduit Boxes (For Surface Mounting)

Type FD



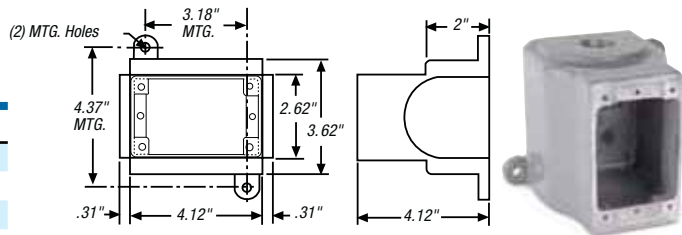
Catalog Number 3711A



Catalog Number 3712A

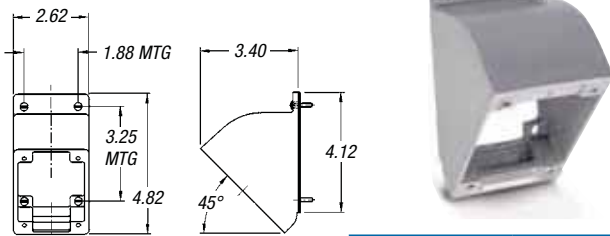
	CAST ALUMINUM	CAST BRASS	USE WITH
Single	3711A	3731-RS	20A
Double	3712A	3732-RS	30A
DSFD	3781A	—	50A

Note: 3/4" NPT Hole Std. Additional accessories are available. Please consult your Thomas & Betts representative.



Catalog Number 3781A

45° Angle Adapter



Catalog Number 3678A

	CAST ALUMINUM	CAST BRASS
	3678A	3678B

Conduit Adapter Kits (Plugs or Connectors)



SIZE	20 AMP	30 AMP	50 AMP	60 AMP
1/2"	9X2C50	9X3C50	—	—
3/4"	9X2C75	9X3C75	9X5C75	9X6C75
1"	—	9X3C10	9X5C10	9X6C10

Cable Bushings



20-Amp Cable Bushing

MAX. CABLE O.D. (INCHES)	20 AMP	30, 50 & 60 AMP
.375	C16984A	—
.437	C16984B	—
.500	C16984C	—
.545	—	2000-11
.562	C16984D	—
.606	B16506	—
.620	—	2000-03
.625	B16524	—
.700	—	2000-04
.750	—	2000-01
.800	—	2000-06
.870	—	2000-02
.925	—	2000-12
1.000	—	2000-05

(Minimum limit 85% of O.D. size for sealing.)
Material — Oil-resistant Neoprene.
State catalog number followed by slash (/) and Max. Cable O.D.; example: 9P33U1/1000 will order the 1.000" bushing instead of the standard .700" bushing for the 9P33U1.

Replacement Caps



	20 AMP	30 AMP	50 AMP	60 AMP
Screw Cap (Connector)	9X2PSC	9X3PSC	9X5PSC	9X6PSC
Cup Cap (Plug)	—	9X3CC	9X3CC	9X3CC
Screw Cap (Receptacle)	—	7X3RCW	7X5RCW	7X6RCW
Flap Cap (Receptacle)	—	7X3RCF	7X5RCF	7X6RCF

Russellstoll® Pin and Sleeve Power Connectors