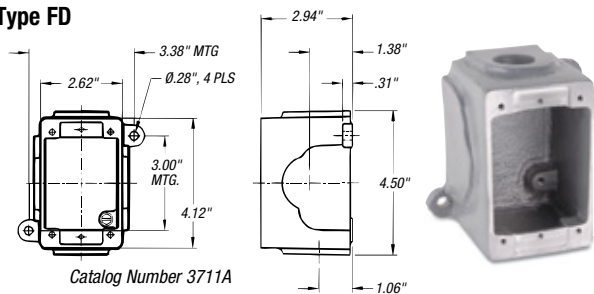


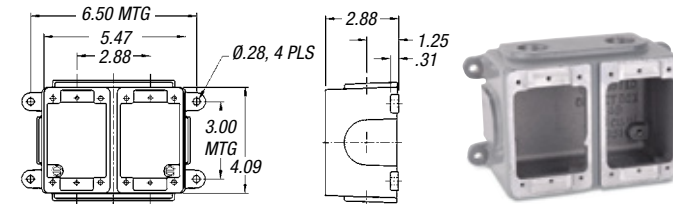
## DuraGard® Waterproof Connections

### Conduit Boxes (For Surface Mounting)

#### Type FD



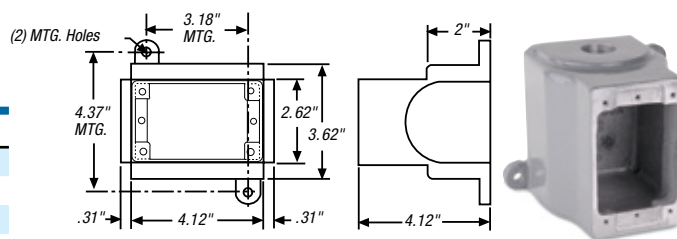
Catalog Number 3711A



Catalog Number 3712A

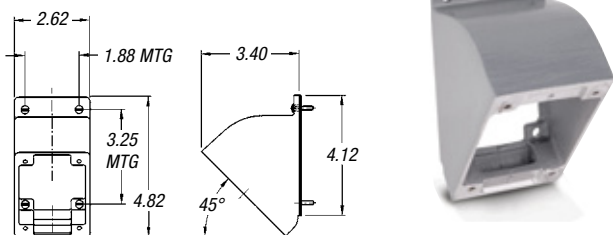
	CAST ALUMINUM	CAST BRASS	USE WITH
Single	3711A	3731-RS	20A
Double	3712A	3732-RS	30A
DSFD	3781A	—	50A

**Note:** 3/4" NPT Hole Std. Additional accessories are available. Please consult your Thomas & Betts representative.



Catalog Number 3781A

### 45° Angle Adapter



Catalog Number 3678A

CAST ALUMINUM	CAST BRASS
3678A	3678B

### Conduit Adapter Kits (Plugs or Connectors)



SIZE	20 AMP	30 AMP	50 AMP	60 AMP
1/2"	9X2C50	9X3C50	—	—
3/4"	9X2C75	9X3C75	9X5C75	9X6C75
1"	—	9X3C10	9X5C10	9X6C10

### Cable Bushings

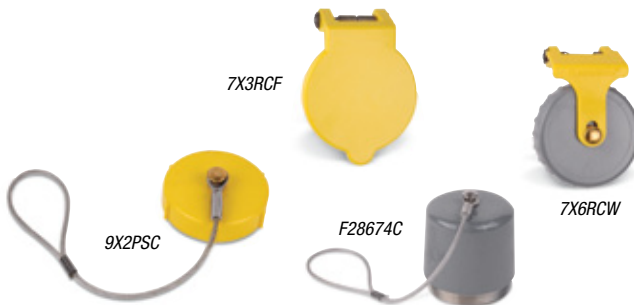


20-Amp  
Cable Bushing

MAX. CABLE O.D. (INCHES)	20 AMP	30 AND 50 AMP
.375	C16984A	—
.437	C16984B	—
.500	C16984C	—
.545	—	2000-11
.562	C16984D	—
.606	B16506	—
.620	—	2000-03
.625	B16524	—
.700	—	2000-04
.750	—	2000-01
.800	—	2000-06
.870	—	2000-02
.925	—	2000-12
1.000	—	2000-05

(Minimum limit 85% of O.D. size for sealing.)  
Material — Oil-resistant Neoprene.  
State catalog number followed by slash (/) and bushing code; example: 9P33U1/1000.

### Replacement Caps



	20 AMP	30 AMP	50 AMP	60 AMP
Screw Cap (Connector)	9X2PSC	9X3PSC	9X5PSC	9X6PSC
Cup Cap (Plug)	—	F26874C	F26874C	F26874C
Screw Cap (Receptacle)	—	7X3RCW	7X5RCW	7X6RCW
Flap Cap (Receptacle)	—	7X3RCF	7X5RCF	7X6RCF