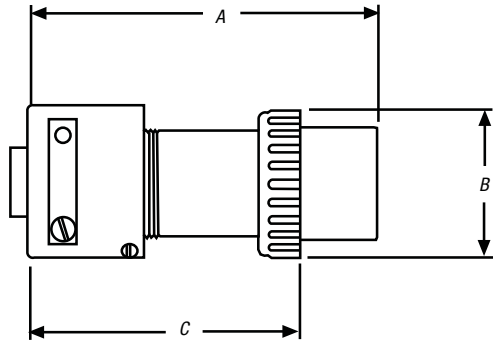
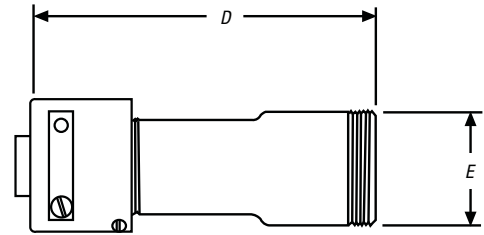


## DuraGard® Waterproof Connections

### Plugs and Female Plugs



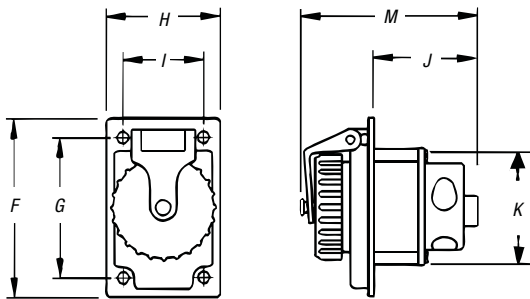
### Connectors



AMPS		A*	B	C*	D	E	MAX AWG	TERMINAL Ø IN./MM
20A	Inches	3.87	2.16	2.75	4.75	1.88	12	.140/.0055
	mm	98.3	54.9	69.9	120.7	47.8		
30A	Inches	5.385	2.38	4.16	6.25	2.13	8	.235/.0092
	mm	136.6	60.5	105.7	158.8	54.1		
50A	Inches	5.75	2.38	4.16	6.25	2.13	6	.235/.0092
	mm	146.1	60.5	105.7	158.8	54.1		
60A	Inches	5.75	2.38	4.16	6.25	2.13	6	.235/.0092
	mm	146.1	60.5	105.7	158.8	54.1		

\* Dimensions will vary slightly with assembly.

### Receptacles and Male Receptacles



Screw cover shown. Flap cover also available; no dimensional changes.

AMPS		F	G	H	I	J	K	M	MAX. AWG	TERMINAL Ø IN./MM
20A	Inches	4.14	3.25	2.66	1.88	1.49	2.26	3.17	12	.140/.0055
	mm	105.2	82.6	67.6	47.8	37.8	57.4	80.5		
30A	Inches	4.14	3.25	2.66	1.88	2.44	2.71	4.12	8	.235/.0092
	mm	105.2	82.6	67.6	47.8	62.0	68.8	104.6		
50A	Inches	4.14	3.25	2.66	1.88	2.44	2.71	4.12	6	.235/.0092
	mm	105.2	82.6	67.6	47.8	62.0	68.8	104.6		
60A	Inches	4.14	3.25	2.66	1.88	2.44	2.71	4.12	6	.235/.0092
	mm	105.2	82.6	67.6	47.8	62.0	68.8	104.6		