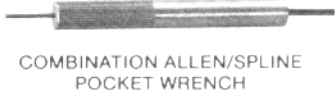


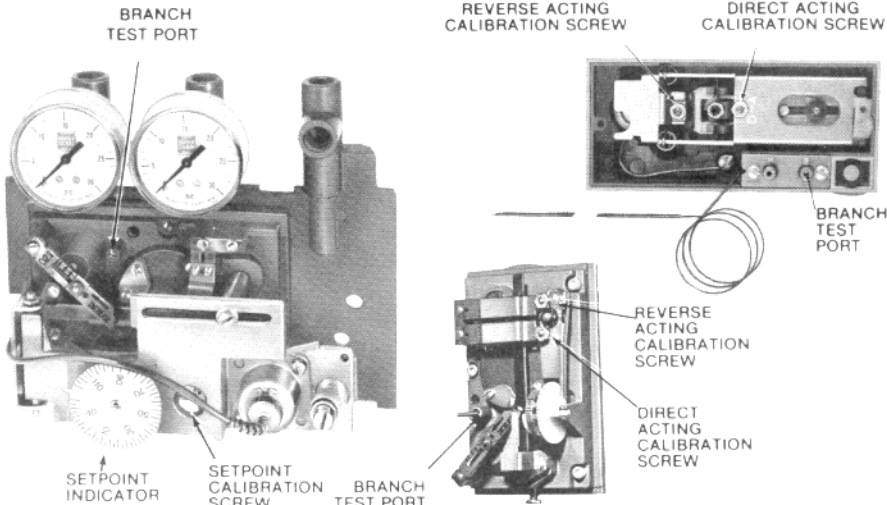
TOOL-82



5/64" Allen wrench used for branch test port and 0.048" 6 spline wrench used for thermostat calibration.

Products where TOOL-82 is used:

TK-1000	TK-6000	RK-500
R500	R503	RK-504
R504	R516	RK-532
R532	R537	RK-503
R539	R540	RK-516
S515	T-82	RK-539
RK-537	RK-540	SK-515



TOOL-85



TOOL-85 AIR BULB



3/16 TO 1/8 BARBED REDUCER FITTING (WITH TUBE CONNECTORS)



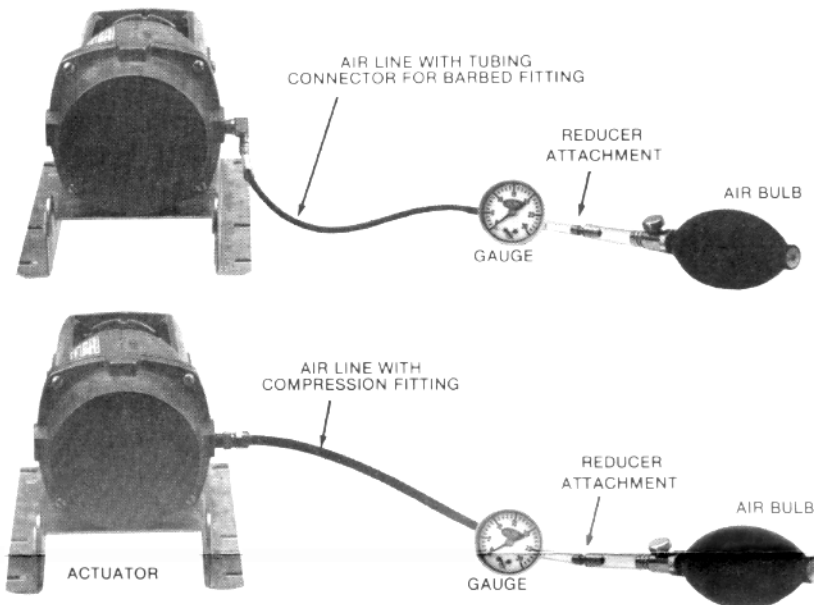
AIR LINE WITH TUBING CONNECTOR FOR BARBED FITTING



3/16" x 4" BLADE ALL PURPOSE SCREWDRIVER



AIR LINE WITH COMPRESSION FITTING



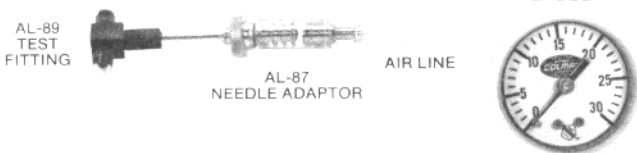
AL-87



Used to test the air pressure. The needle end is inserted into test fitting AL-88 or AL-89.

Products where AL-87 is used:

CP-8511  
CP-8513  
PP-8311



B-373



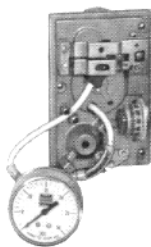
B-373 FEMALE BRANCH TEE



AL-362 GAUGE

Used to interface gauge with branch line for branch pressure indication.

ROOM THERMOSTAT



PROPER INSTALLATION OF GAUGE ADAPTOR ASSEMBLY

N2-4

COMBINATION THERMOSTAT CALIBRATION/COVER SCREW WRENCH



Products where N2-4 is used:

H18-301	HK-18	H53-301	HK-53
P341	PK-341	P541	PK-541
T12	TK-12	TR12	TKR-12
T13	TK-13	TR13	TKR-13
T18	TK-18	TR18	TKR-18
T19	TK-19	TR19	TKR-19
T23	TK-23	T24	TK-24
T27	TK-27	T32	TK-32
T33	TK-33	T34	TK-34
T35	TK-35	T36	TK-36
T435	TK-435	T436	TK-436
T460	TK-460	T53-101	TKS-53-101

TOOL-110

3/32" HEXWRENCH



Products where TOOL-110 is used:

P323	PK-323
S510	SK-510
S511	SK-511
S520	SK-520
S530	SK-530
S540	SK-540



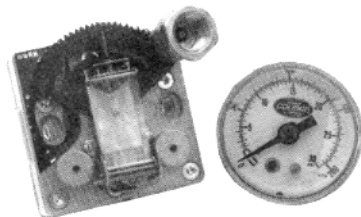
MCS-GA

GAUGE ADAPTOR



Products where MCS-GA is used:

H18-301	HK-18	H53-301	HK-53
P341	PK-341	MCS-CV	MCS-CT
T12	TK-12	TR12	TKR-12
T13	TK-13	TR13	TKR-13
T18	TK-18	TR18	TKR-18
T19	TK-19	TR19	TKR-19
T23	TK-23	T24	TK-24
T27	TK-27	T32	TK-32
T33	TK-33	T34	TK-34
T35	TK-35	T36	TK-36
T435	TK-435	T436	TK-436
T460	TK-460	T53-101	TKS-53-101
MCS-GM-P			



Pneumatic Calibration Tool Kit

TOOL-95-1

- STEPS
1. Measure temperature at thermostat.
  2. Set dial to temperature measured.
  3. attache branch test gauges.
  4. Adjust setpoint calibration screw to obtain desired branch pressure.
  5. Adjust setpoint to desired control point.

**NOTICE**

The thermal element of the room thermostat is very sensitive to temprature change. Do not affact its temperature by touching the bimetal or breathing on the thermostat. When calibrating the instrument, observe the wall box temperature frequently and reset the setpoint dial if required.

**CAUTION**

This information is for reference only. Temperature controls are delicate instruments. Consult respective product General Instru- tion sheets before calibrating or adjusting the control.

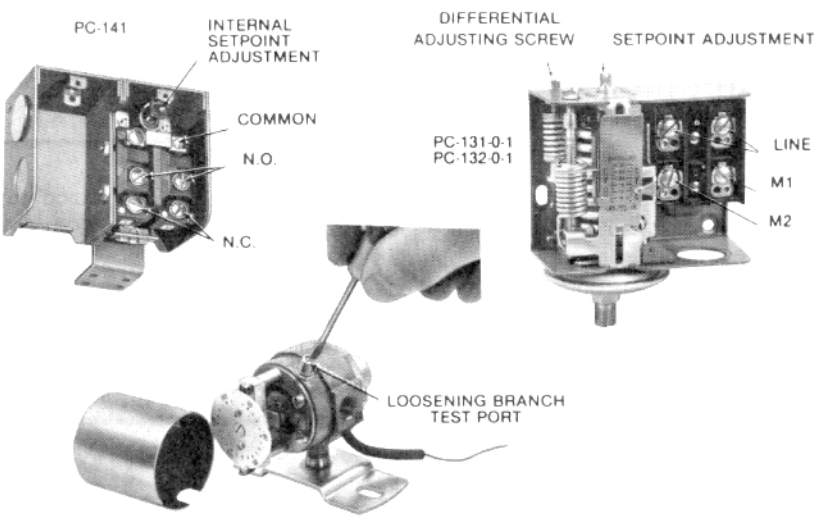


TOOL-10



MAGNETIC  
SCREWDRIVER

Multiple purpose.

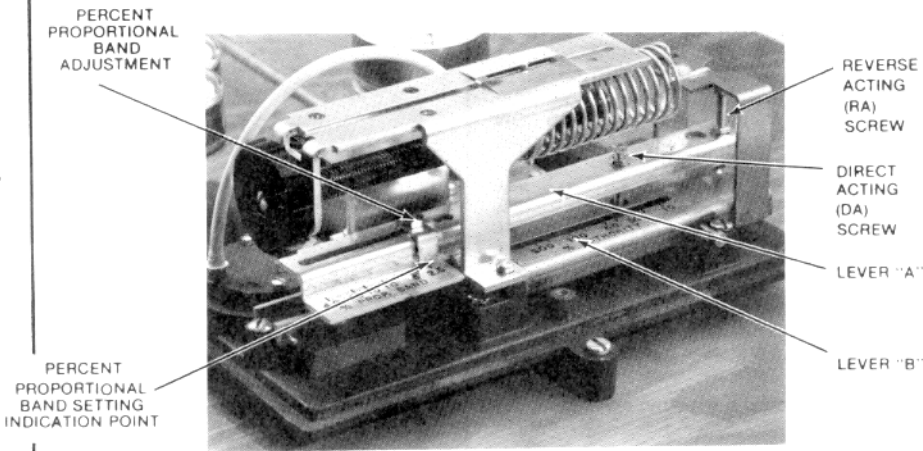


TOOL-11



CALIBRATION WRENCH FOR RK'S

Used for calibration of the proportional band, reverse and direct acting screws.



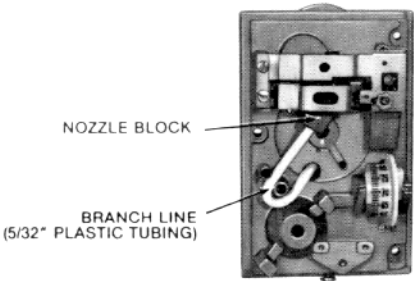
TOOL-74

Must be ordered separately.  
Not included in this tool kit.



INSERTION TOOL

Used for installing and removing 5/32" plastic air lines in small spaces.



TOOL-78  
AL-362

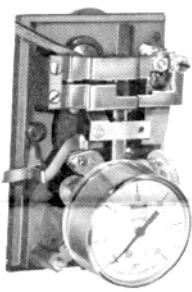


TOOL-78  
ADAPTOR

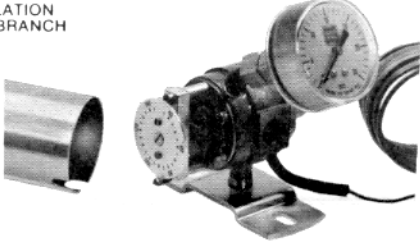


AL-362  
GAUGE

Used to adapt test gauge to branch test port for TK-1000, TK-6000 PN thermostats.



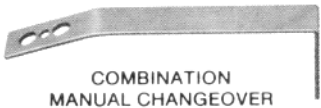
PROPER INSTALLATION  
OF GAUGE AND BRANCH  
TEE ASSEMBLY



DUCT THERMOSTAT

ROOM THERMOSTAT

TOOL-80-1



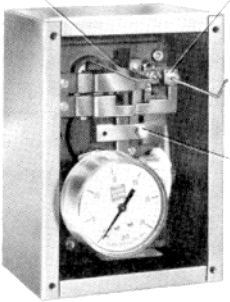
COMBINATION  
MANUAL CHANGEOVER  
CALIBRATION WRENCH

Manual changeover wrench used for TK-1201, TK-1301, TK-1601, TK-13000, TK-14000 series. Calibration wrench used for TK-1700 and TK-1800 series.

NOTE

The hex nuts on the setpoint adjusting screws are a tension device only. They should not be loosened to make an adjustment.

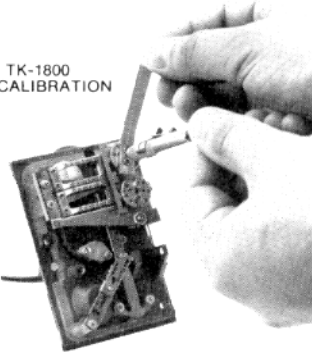
CHANGEOVER WRENCH  
INSTALLED CORRECTLY



15 PSIG BIMETAL  
CALIBRATION SCREW

20 PSIG BIMETAL  
CALIBRATION SCREW

TK-1700, TK-1800  
SERIES CALIBRATION



On October 1st, 2009, TAC became the Buildings business of its parent company Schneider Electric. This document reflects the visual identity of Schneider Electric, however there remains references to TAC as a corporate brand in the body copy. As each document is updated, the body copy will be changed to reflect appropriate corporate brand changes.

Copyright 2010, Schneider Electric  
All brand names, trademarks and registered trademarks are the property of their respective owners. Information contained within this document is subject to change without notice.