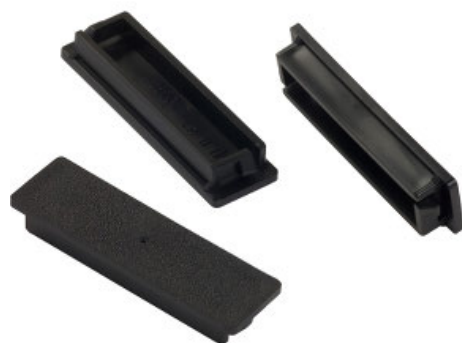


Product availability : Stock - Normally stocked in distribution facility



### Main

Product line	QO
Product type	Load Center Filler Plate

### Ordering and shipping details

Category	00102 - QO LC ACCESSORIES
Discount Schedule	DE3A
GTIN	00785901478416
Nbr. of units in pkg.	5
Package weight(Lbs)	5.0000000000000003E-2
Returnability	Y
Country of origin	US

### Offer Sustainability

RoHS (date code: YYWW)	Compliant - since 1248 - Schneider Electric declaration of conformity <a href="#">Schneider Electric declaration of conformity</a>
REACH	Reference not containing SVHC above the threshold <a href="#">Reference not containing SVHC above the threshold</a>
Product end of life instructions	Need no specific recycling operations
California proposition 65	WARNING: Cancer and Reproductive Harm - <a href="http://www.P65Warnings.ca.gov">www.P65Warnings.ca.gov</a>

### Contractual warranty

Warranty period	18 months
-----------------	-----------