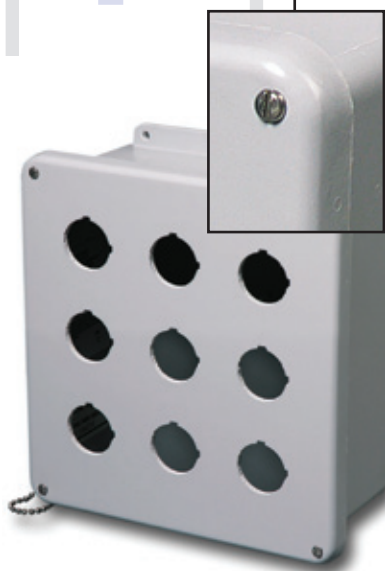


Push Button

F

Technical Specifications - Pushbutton Series

"F" configuration - 4 cover screws, lift off cover 30mm



F Construction

Material	Hot compression molded fiberglass reinforced polyester (thermoset)
Gasket	Poured polyurethane seamless gasket provides watertight, dust-tight environmental seal
Cover screws	Recessed captive stainless steel screws
Stainless Steel Hardware	300 Series stainless used on all external hardware
Enclosure mounting	Integral mounting flange for ease of mounting
Cover retention	Stainless steel beaded cover retention chain
Panel Mounting	Raised bosses with brass inserts accepting 10-32 screws for optional panel mounting
Soft Edge Design	Rounded edges, minimal protrusions or exposed pocket areas for assembly of dust and debris

F Industry Standards

UL/cUL 50	File E64358 Type 1, 3R, 4X, 6P, 12
NEMA 250	Type 1, 3R, 4X, 6P, 12
CSA Std C22.2	File LR069014 Type 1, 3R, 4X, 6P, 12
Temperature Range	(-76°F to +274°F) (-60°C to +134°C)
Flammability Rating	UL94-5V
Self Extinguishing	Non-flame propagating
Chemical Resistance	Full chemical resistance charts listed in appendix
NFPA No. 101 Flame Spread	Class A (1)

F Accessories

Mounting Feet

Mounting Feet

pg. 155

F Modifications

Custom Colors	pg. 12 - 13
Custom Painting	pg. 12 - 13
Silk Screening	pg. 12 - 13
Custom Cutouts/Holes	pg. 12 - 13

NOTES: