

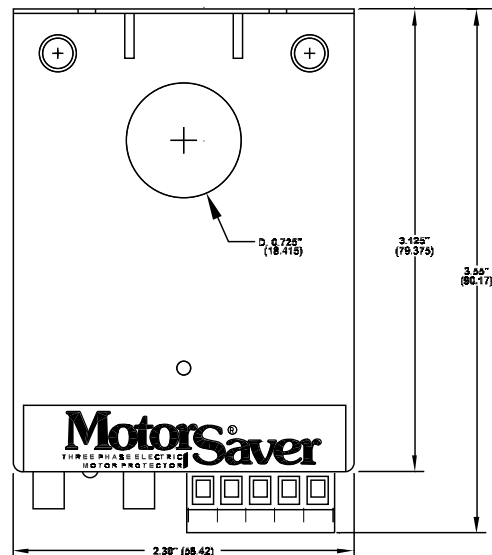
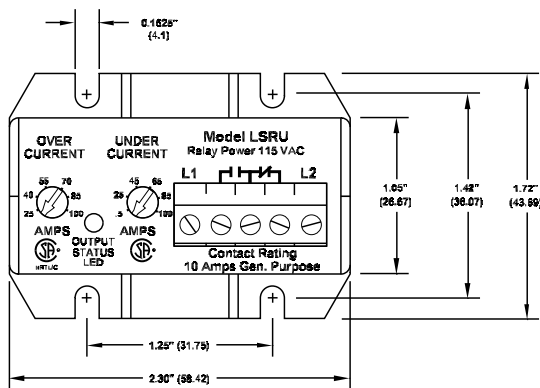


The Model LSRU load sensors use current levels to monitor all types of over and underload conditions such as feed rates, tool wear, pump loads, mixer viscosity and others. They may be used to stage pumps, chillers and other machinery. Two user adjustments are provided with your choice of overcurrent, undercurrent, trip delay, restart delay and extended restart delay options. Three current ranges, 0-10A, 5-25A and 25-100A, are available.

### OPERATION:

Model LSRU load sensors are fail-safe devices. If something should happen to the device to make it inoperable, such as a surge, the relay contact will open, thus opening the contactor it is controlling and save the motor from the surge.

The output relay de-energizes when the current exceeds the over or under current setpoints. After the restart delay times out, the relay will close its output relay, letting the motor start back up. If the current level is unacceptable, the relay will trip after the trip delay expires. If the current drops to zero, the LSRU will recognize a normal stop and will not de-energize it's relay.



## Specifications

<b>Functional Specifications</b>	
Current Ranges -1.5 -2 -3	0 to 10 Amps 5 to 25 Amps 25 to 100 Amps
Adjustment options Overcurrent Undercurrent Trip Delay Restart Delay Extended Restart Delay	Adj. through entire Amp range* Adj. through entire Amp range* 0.5 to 60 seconds** Manual and 0.5 to 300 seconds** Manual and 0.5 to 300 minutes**
Motor Acceleration Time	2 seconds***
Accuracy Current Timing	±2% ±10%
Isolation	600VAC
<b>Input Characteristics</b>	
Supply Voltage 24V Range 115V Range	18 to 30VAC 90 to 135VAC
Frequency	50 to 60Hz
<b>Output Characteristics</b>	
Output Contact Rating-SPDT Form C	480VA@240VAC Pilot Duty 10A@240VAC General Purpose
<b>General Characteristics</b>	
Operating Temperature	-40° to 70° C (-40° to 158° F)
Terminals Wire AWG Torque	#12 - 24 7 in.-lbs.
Power Consumption	2 Watts (max.)
Standards Passed CSA and CSA-NRTL/C	LR 46510-35
Dimensions	2.30" L x 1.72" H x 3.55" D
Weight	5.5 oz.
Mounting Method	Surface Mount

\* Note: Overcurrent adjustment cannot be set below the undercurrent adjustment nor can the undercurrent adjustment be set above the overcurrent adjustment for proper operation.

\*\* Note: Delays are fixed at 0.5 seconds, if not selected as an adjustment. Unit cannot have both trip and restart delay adjustment.

\*\*\* Note: Over and undercurrent levels are ignored for 2 seconds from the instant the device sees motor current.

## How to order:

### Available Models:

LSRU-24-AL-2	LSRU-115-OU-1.5	O - Overcurrent
LSRU-24-AL-3	LSRU-115-OU-2	U - Undercurrent
LSRU-115-AL-1.5	LSRU-115-OU-3	R - Restart Delay
LSRU-115-AL-2	LSRU-115-UE-2	T - Trip Delay
LSRU-115-AL-3	LSRU-115-UR-2	E - Extended Restart Delay
LSRU-115-FC-1.5	LSRU-115-UR-3	(in minutes)
LSRU-115-OR-1.5	LSRU-115-UT-2	AL - Alarm Logic
LSRU-115-OR-2	LSRU-115-UT-3	FC - Feed Control
LSRU-115-OT-1.5		
LSRU-115-OT-2		
LSRU-115-OT-3		



[www.SymCom.com](http://www.SymCom.com)

...your electronic control & protection specialists

(605) 348.5580 / (800) 843.8848 / Fax (605) 348.5685  
customerservice@symcom.com / technicalsupport@symcom.com