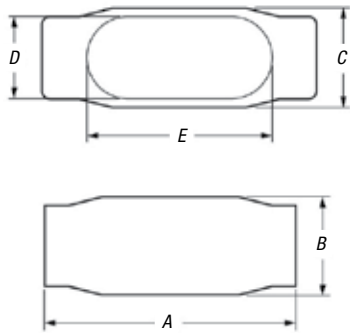
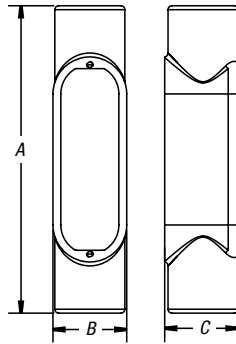


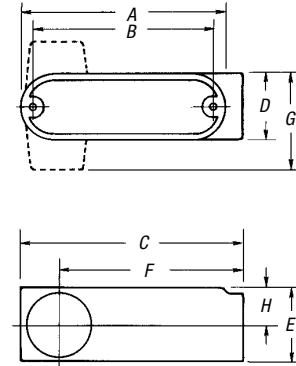
Conduit Bodies and Covers



C Form 7 and Form 8



C Series 35



C Threaded Aluminum and EMT Aluminum

C Form 7 BlueKote® Conduit Bodies



CAT. NO.	HUB SIZE	DIMENSIONS (IN.)					CU. IN.
		A	B	C	D	E	
C17	½"	5.45	1.40	1.45	.95	3.20	4.0
C27	¾"	6.05	1.60	1.65	1.15	3.80	6.6
C37	1"	6.75	1.90	1.80	1.35	4.55	10.6
C47	1¼"	7.30	2.30	2.20	1.80	5.00	18.8
C57	1½"	8.60	2.60	2.45	2.05	5.45	26.4
C67	2"	9.50	3.20	3.05	2.45	6.40	51.0
C77-TB	2½"	12.10	3.65	4.25	3.60	8.40	102.0
C87	3"	12.10	4.40	4.25	3.60	8.40	132.0

C Form 8 BlueKote® Conduit Bodies



CAT. NO.	HUB SIZE	DIMENSIONS (IN.)					CU. IN.
		A	B	C	D	E	
C18	½"	5.53	1.44	1.38	1.00	3.31	4.9
C28	¾"	6.28	1.53	1.19	1.19	3.94	8.0
C38	1"	7.31	1.94	1.75	1.38	4.56	13.0
C448	1¼"	8.50	2.38	2.19	1.75	5.31	23.5
C58-TB	1½"	10.38	2.78	2.75	2.13	6.50	45.0
C68	2"	12.25	3.56	3.75	3.00	8.56	88.0
C78	2½"	15.63	4.44	5.00	4.25	10.88	110.0
C88	3"	15.63	4.81	5.00	4.25	10.88	110.0

C Series 35 Conduit Bodies



CAT. NO.	HUB SIZE	DIMENSIONS (IN.)			CU. IN.
		A	B	C	
C50M	½"	5.38	1.34	1.37	4.5
C75M-TB	¾"	6.00	1.50	1.70	7.5
C100M	1"	7.05	1.80	1.90	12.5
C125M	1¼"	9.00	2.60	2.75	35
C150M	1½"	9.00	2.60	2.83	35.3
C200M	2"	11.50	3.12	3.31	75
C250M-TB	2½"	15.00	4.31	3.90	153
C300M	3"	15.12	4.31	4.75	181
C350M	3½"	18.13	4.88	5.19	290
C400M	4"	18.13	4.88	5.56	320

C Threaded Aluminum Conduit Bodies



CAT. NO.	HUB SIZE	DIMENSIONS (IN.)							CU. IN.
		A	B	C	D	E	F	G	
AC1	½"	3.88	4.38	1.33	1.38	2.41	2.06	.81	4.3
AC2	¾"	4.63	5.13	1.53	1.63	2.78	2.59	.94	7.3
AC3	1"	5.38	5.94	1.75	1.88	3.25	5.63	1.00	11.8
AC4	1¼"	7.25	7.88	2.50	2.50	4.19	3.53	1.38	32.0
AC5	1½"	7.25	7.88	2.50	2.75	4.19	3.53	1.50	32.0
AC6	2"	9.50	10.19	3.13	3.56	5.41	4.00	1.97	69.5
AC7	2½"	12.25	13.00	4.50	4.50	6.88	5.78	2.44	190.0
AC8	3"	12.25	13.00	4.50	4.50	6.88	5.78	2.44	190.0
AC9	3½"	15.00	16.31	5.50	5.56	8.81	6.81	3.00	366.0
AC10	4"	15.00	16.31	5.50	5.56	8.81	6.81	3.00	366.0

C EMT Aluminum Conduit Bodies



CAT. NO.	HUB SIZE	DIMENSIONS (IN.)							CU. IN.
		A	B	C	D	E	F	G	
BC1	½"	3.88	4.38	1.33	1.38	2.41	2.06	.81	4.3
BC2	¾"	4.63	5.13	1.53	1.63	2.78	2.59	.94	7.3
BC3	1"	5.38	5.94	1.75	1.88	3.25	5.63	1.00	11.8
BC4	1¼"	7.25	7.88	2.50	2.50	4.19	3.53	1.38	32.0
BC5	1½"	7.25	7.88	2.50	2.75	4.19	3.53	1.50	32.0
BC6	2"	9.50	10.19	3.13	3.56	5.41	4.00	1.97	69.5