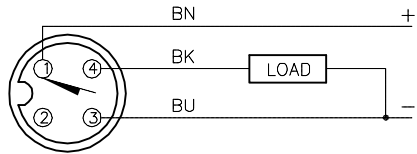


WIRING DIAGRAM

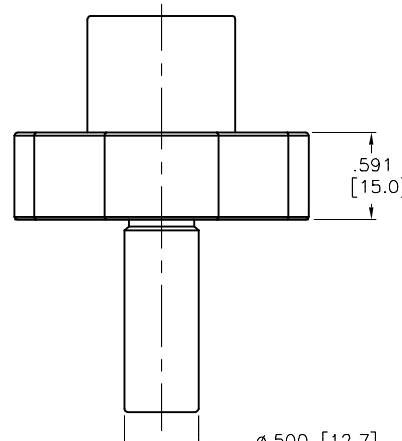
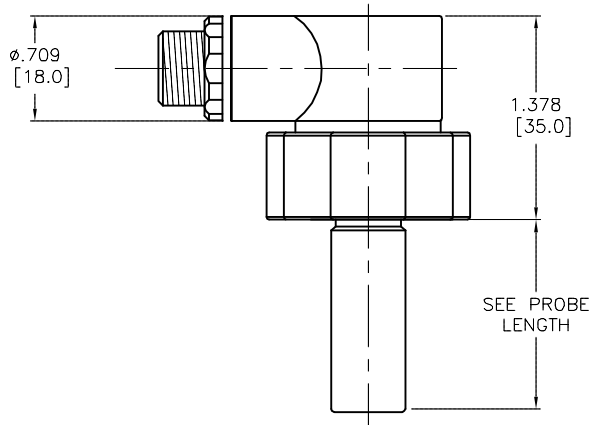
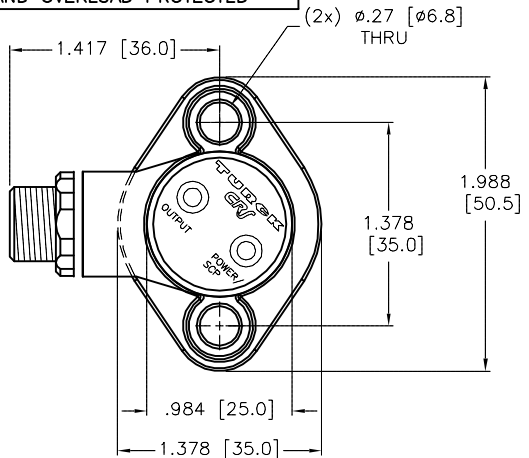


OUTPUT: AP6X2

SHORT-CIRCUIT AND OVERLOAD PROTECTED

SPECIFICATIONS

RATED OPERATING DISTANCE	1.5mm = .059"
MOUNTING MODE	FLUSH
REPEATABILITY	≤ 2%
TEMPERATURE DRIFT	≤ ± 10%
HYSTERESIS	3-15%
AMBIENT TEMPERATURE	-25°C to +70°C (+13°F to +158°F)
OPERATING VOLTAGE	10-30 VDC
RESIDUAL RIPPLE	≤ 10%
DC RATED OPERATIONAL CURRENT	≤ 200 mA
NO-LOAD CURRENT	≤ 15 mA
RESIDUAL CURRENT	≤ 0.1 mA
INSULATION VOLTAGE	≤ 0.5 kV
SHORT-CIRCUIT PROTECTED	YES
MAX. VOLTAGE DROP	≤ 1.8 V
WIRE BREAK PROTECTION	INCORPORATED
REVERSE POLARITY PROTECTION	INCORPORATED
OUTPUT FUNCTION	3-WIRE, DC, PNP
SWITCHING FREQUENCY	≤ 0.30 kHz
HOUSING MATERIAL	METAL: CuZn/CHROME
ACTIVE FACE MATERIAL	CERAMIC
PROBE/BARREL MATERIAL	STAINLESS STEEL
SPACER FLANGE MATERIAL	STAINLESS STEEL
CONNECTION	M12x1
SHOCK	30 g, 11 ms
VIBRATION	55 Hz, 1 mm AMPLITUDE (IN ALL 3 PLANES)
PROTECTION	IP68
OPERATING VOLTAGE INDICATION	LED: GREEN
OUTPUT ENERGIZED INDICATION	LED: YELLOW
OPERATING PRESSURE	3000 PSI (206.9 BAR)
OVERPRESSURE (CONTINUOUS)	4500 PSI (310 BAR)



SOURCE DRAWING - FOR REFERENCE ONLY

NOTES:

1. ROTATION CAPABILITY OF THE CRS SWITCH IS 360°.

RELATED DOCUMENTS 1. 2. 3. 4.	3RD ANGLE PROJECTION 	THIS DRAWING IS CONFIDENTIAL AND THE PROPERTY OF TURCK INC. USE OF THIS DOCUMENT WITHOUT WRITTEN PERMISSION IS PROHIBITED.		3000 CAMPUS DRIVE MINNEAPOLIS, MN 55441 1-800-544-7769 (763) 553-7300 (763) 553-0708 fax www.turck.us	
		MATERIAL SEE SPECIFICATIONS	DRFT RDS APVD A.F.	DATE 11/22/16 SCALE 1=1.3	DESCRIPTION BI1.5-CRS730C-AP6X2-H1141
FINISH	ALL DIMENSIONS DISPLAYED ON THIS DRAWING ARE FOR REFERENCE ONLY CONTACT TURCK FOR MORE INFORMATION	UNIT OF MEASUREMENT INCH [MILLIMETER]		IDENTIFICATION NO. 4279089	
DO NOT SCALE THIS DRAWING		FILE: 4279089		REV D	

D	ADD SPEC FOR OVERPRESSURE	RDS	10/23/18	67317
REV	DESCRIPTION	BY	DATE	ECO NO.