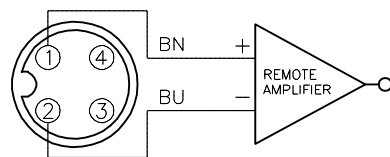
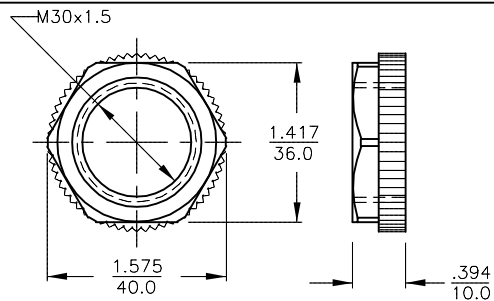


WIRING DIAGRAM



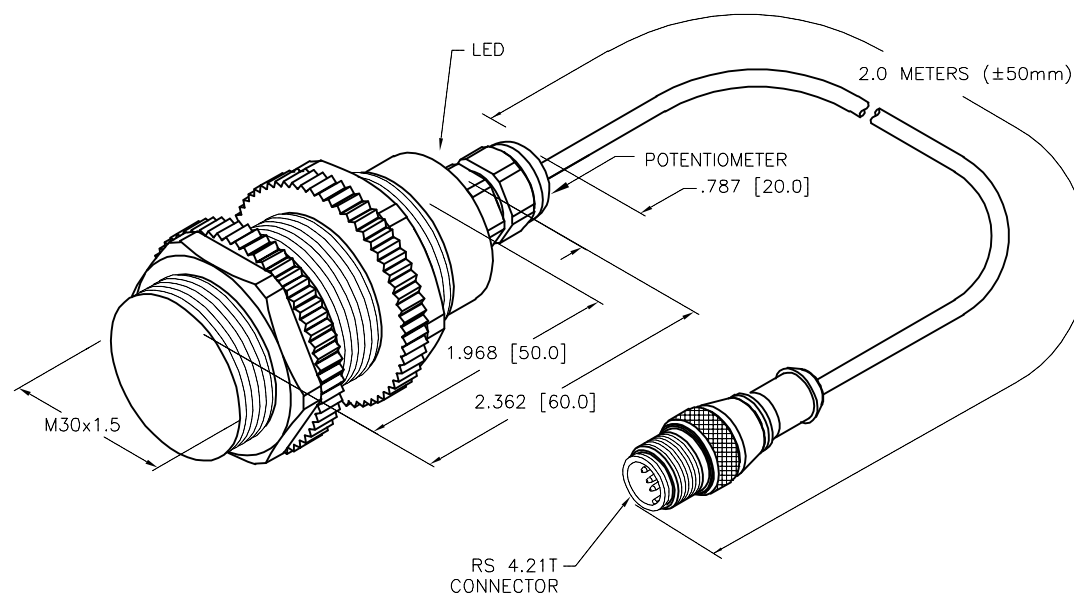
OUTPUT: Y0

LOCKNUT LN-P30

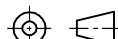



SPECIFICATIONS

RATED OPERATING DISTANCE	10mm [.394"] FLUSH 15mm [.591"] NON-FLUSH
MOUNTING MODE	FLUSH/NON-FLUSH
HYSTERESIS	1-20%
MIN. REPEAT ACCURACY	≤ 2%
TEMPERATURE DRIFT	≤ ± 20%
OPERATING TEMPERATURE	-25°C to +70°C (-13°F to +158°F)
VOLTAGE	8.2 VDC NOMINAL
OUTPUT FUNCTION	2-WIRE, NAMUR
MAX. SWITCHING FREQUENCY	≤ 0.1 kHz
HOUSING MATERIAL	PLASTIC, PVDF
ACTIVE FACE	PLASTIC, PVDF
CABLE	ø5.2, Lifyy, PVDF
SHOCK RESISTANCE	30 g, 11 ms
VIBRATION RESISTANCE	55 Hz, 1 mm AMPLITUDE (IN ALL 3 PLANES)
DEGREE OF PROTECTION	IP67
SWITCHING STATUS INDICATION	LED, YELLOW



SOURCE DRAWING - FOR REFERENCE ONLY

RELATED DOCUMENTS 1. 2. 3. 4.	3RD ANGLE PROJECTION			THIS DRAWING IS CONFIDENTIAL AND THE PROPERTY OF TURCK INC. USE OF THIS DOCUMENT WITHOUT WRITTEN PERMISSION IS PROHIBITED.			3000 CAMPUS DRIVE MINNEAPOLIS, MN 55441 1-800-544-7769 (763) 553-7300 (763) 553-0708 fax www.turck.us	
MATERIAL	ALL DIMENSIONS DISPLAYED ON THIS DRAWING ARE FOR REFERENCE ONLY	DRFT	TV	DATE	11/03/17	DESCRIPTION BC10-PT30-Y0X-2-RS4.21T		
APVD		A.F.	SCALE	1=1.3				
FINISH		CONTACT TURCK FOR MORE INFORMATION	UNIT OF MEASUREMENT			IDENTIFICATION NO. 4417055		REV A
			INCH [MILLIMETER]					
		DO NOT SCALE THIS DRAWING			FILE: 4417055		SHEET 1 OF 1	

A	DRAWING RELEASE	TV	11/03/17	
REV	DESCRIPTION	BY	DATE	ECO NO.