

Enclosed Starters



PESW

PESW Series - Non-combination Across the line starter
Three-Phase Enclosure Type - 4X



	Max. UL Horsepower				Box	Setting Range	Coil Voltage	RESET only		START/STOP + RESET		Multiplier
	200V	230V	460V	575V				Catalog Number		Catalog Number		
Disconnect Switches	-	1/3	1/2	-	04	0.8 - 1.2	120	PESW-B9D15EX-R57		PESW-B9D15AX-R57		23
							208-240	PESW-B9V24EX-R57		PESW-B9V24AX-R57		
							480	PESW-B9D39EX-R57		PESW-B9D39AX-R57		
Motor Protectors	-	-	1	1	04	1.2 - 1.8	120	PESW-B9D15EX-R58		PESW-B9D15AX-R58		23
							208-240	PESW-B9V24EX-R58		PESW-B9V24AX-R58		
							480	PESW-B9D39EX-R58		PESW-B9D39AX-R58		
Contactors	1/2	3/4	1-1/2	2	04	1.8 - 2.8	120	PESW-B9D15EX-R59		PESW-B9V18AX-R59		23
							208-240	PESW-B9V24EX-R59		PESW-B9V24AX-R59		
							480	PESW-B9D39EX-R59		PESW-B9D39AX-R59		
Overloads	1	1	2	3	04	2.8 - 4.0	120	PESW-B9D15EX-R60		PESW-B9D15AX-R60		23
							208-240	PESW-B9V24EX-R60		PESW-B9V24AX-R60		
							480	PESW-B9D39EX-R60		PESW-B9D39AX-R60		
Enclosed Starters	1-1/2	1-1/2	3	5	04	4.0 - 6.3	120	PESW-B9D15EX-R27		PESW-B9D15AX-R61		23
							208-240	PESW-B9V24EX-R61		PESW-B9V24AX-R61		
							480	PESW-B9D39EX-R61		PESW-B9D39AX-R61		
Relays	2	2	5	-	04	5.6 - 8.0	120	PESW-B9D15EX-R62		PESW-B9D15AX-R62		23
							208-240	PESW-B9V24EX-R62		PESW-B9V24AX-R62		
							480	PESW-B9D39EX-R62		PESW-B9D39AX-R62		
Pushbuttons and Pilot Lights	3	3	-	7-1/2	04	7.0 - 10	120	PESW-B9D15EX-R63		PESW-B9D15AX-R63		23
							208-240	PESW-B9V24EX-R63		PESW-B9V24AX-R63		
							480	PESW-B9D39EX-R63		PESW-B9D39AX-R63		
Terminal Blocks	-	-	7-1/2	10	04	8.0 - 12.5	120	PESW-B12D15EX-R64		PESW-B12D15AX-R64		23
							208-240	PESW-B12V24EX-R64		PESW-B12V24AX-R64		
							480	PESW-B12D39EX-R64		PESW-B12D39AX-R64		
Power Factor Correction	5	5	10	15	04	11 - 17	120	PESW-B18D15EX-R66		PESW-B18D15AX-R66		23
							208-240	PESW-B18V24EX-R66		PESW-B18V24AX-R66		
							480	PESW-B18D39EX-R66		PESW-B18D39AX-R66		
Appendix A	7-1/2	7-1/2	15	-	04	15 - 23	120	PESW-B25D15EX-R67		PESW-B25D15AX-R67		23
							208-240	PESW-B25V24EX-R67		PESW-B25V24AX-R67		
							480	PESW-B25D39EX-R67		PESW-B25D39AX-R67		
Appendix B	10	10	20	25	06	22 - 32	120	PESW-B32D15EX-R68		PESW-B32D15AX-R68		23
							208-240	PESW-B32V24EX-R68		PESW-B32V24AX-R68		
							480	PESW-B38D39EX-R68		PESW-B32D39AX-R68		
	10	10	25	25	06	25-40	120	PESW-B38D15EX-R69		PESW-B38D15AX-R69		23
							208-240	PESW-B38V24EX-R69		PESW-B38V24AX-R69		
							480	PESW-B38D39EXR69		PESW-B38D39AX-R69		

continued on next page

PESW Series - Non-combination Across the line starter - continued Three-Phase Enclosure Type - 4X

Max. UL Horsepower				Box	Setting Range	Coil Voltage	RESET only		START/STOP + RESET		Multiplier
200V	230V	460V	575V				Catalog Number		Catalog Number		
10	15	30	-	06	25 - 40	120	PESW-40V18EX-R35		PESW-40V18AX-R35		Z3
						208-240	PESW-40V24EX-R35		PESW-40V24AX-R35		
						480	PESW-40V47EX-R35		PESW-40V47AX-R35		
15	15	30	40	08	32 - 50	120	PESW-50V18EX-R38		PESW-50V18AX-R38		Z3
						208-240	PESW-50V24EX-R38		PESW-50V24AX-R38		
						480	PESW-50V47EX-R38		PESW-50V47AX-R38		
20	20	40	50	08	40 - 57	120	PESW-65V18EX-R39		PESW-65V18AX-R39		Z3
						208-240	PESW-65V24EX-R39		PESW-65V24AX-R39		
						480	PESW-65V47EX-R39		PESW-65V47AX-R39		
-	25	50	60	08	57 - 70	120	PESW-80V18EX-R41		PESW-80V18AX-R41		Z3
						208-240	PESW-80V24EX-R41		PESW-80V24AX-R41		
						480	PESW-80V47EX-R41		PESW-80V47AX-R41		
25	30	60	75	10	63 - 80	120	PESW-95V18EX-R43		PESW-95V18AX-R43		Z3
						208-240	PESW-95V24EX-R43		PESW-95V24AX-R43		
						480	PESW-95V47EX-R43		PESW-95V47AX-R43		
30	-	75	-	10	75 - 97	120	PESW-105V18EX-R44		PESW-105V18AX-R44		Z3
						480	PESW-105V47EX-R44		PESW-105V47AX-R44		
-	40	-	-	10	90 - 112	120	PESW-105V18EX-R45		PESW-105V18AX-R45		Z3
						208-240	PESW-105V24EX-R45		PESW-105V24AX-R45		

Notes:

- 1) OLR must be set @115% of FLA
- 2) 3-phase starters with 120V coil are wired for separate control
- 3) 3-phase starters can be wired for single-phase applications (see diagram)

General Information

Circuit Protection

Disconnect Switches

Motor Protectors

Contactors

Overloads

Enclosed Starters

Relays

Pushbuttons and Pilot Lights

Terminal Blocks

Power Factor Correction

Appendix A

Appendix B

PESW

PESW Series - Non-combination Across the line starter
Single Phase- Enclosure Type-4X




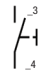

Max. UL Horsepower	Box	Setting Range	Coil Voltage	RESET only		START/STOP + RESET		Multiplier
				115V	230V	Catalog Number	Catalog Number	
-	1/2	04	2.8 - 4.0	120	PESWS-B9D15EX-RM60		PESWS-B9D15AX-RM60	Z3
				208-240	PESWS-B9V24EX-RM60		PESWS-B9V24AX-RM60	
-	3/4	04	4.0 - 6.3	120	PESWS-B9D15EX-RM61		PESWS-B9D15AX-RM61	
				208-240	PESWS-B9V24EX-RM61		PESWS-B9V24AX-RM61	
1/3	1	04	5.6 - 8.0	120	PESWS-B9D15EX-RM62		PESWS-B9D15AX-RM62	
				208-240	PESWS-B9V24EX-RM62		PESWS-B9V24AX-RM62	
1/2	-	04	7.0 - 10	120	PESWS-B9D15EX-RM63		PESWS-B9D15AX-RM63	
				208-240	PESWS-B9V24EX-RM63		PESWS-B9V24AX-RM63	
-	1-1/2	04	8.0 - 12.5	120	PESWS-B9D15EX-RM64		PESWS-B9D15AX-RM64	
				208-240	PESWS-B9V24EX-RM64		PESWS-B9V24AX-RM64	
3/4	2	04	10 - 15	120	PESWS-B12D15EX-RM65		PESWS-B12D15AX-RM65	
				208-240	PESWS-B12V24EX-RM65		PESWS-B12V24AX-RM65	
1	3	04	11 - 17	120	PESWS-B18D15EX-RM66		PESWS-B18D15AX-RM66	
				208-240	PESWS-B18V24EX-RM66		PESWS-B18V24AX-RM66	
1-1/2	5	04	15 - 23	120	PESWS-B25D15EX-RM67		PESWS-B25D15AX-RM67	
				208-240	PESWS-B25V24EX-RM67		PESWS-B25V24AX-RM67	
2	5	04	22 - 32	120	PESWS-B32D15EX-RM68		PESWS-B32D15AX-RM68	
				208-240	PESWS-B32V24EX-RM68		PESWS-B32V24AX-RM68	
3	7-1/2	04	32-40	120	PESWS-B38D15EX-RM69		PESWS-B38D15AX-RM69	
				208-240	PESWS-B38V24EX-RM69		PESWS-B38V24AX-RM69	
3	7-1/2	06	25 - 40	120	PESWS-40V18EX-RM35		PESWS-40V18AX-RM35	
				208-240	PESWS-40V24EX-RM35		PESWS-40V24AX-RM35	
3	10	08	32 - 50	120	PESWS-50V18EX-RM38		PESWS-50V18AX-RM38	
				208-240	PESWS-50V24EX-RM38		PESWS-50V24AX-RM38	

Note: OLR must be set at 115% of motor FLA

Accessories - Mounting in Control Stations

Contact Block²⁾

Replacement Base Mount Contact Blocks for PESWS(B) 9-38

Description	Contacts	Diagram	Standard packing	Catalog Number	Multiplier
 0.015 kg ³⁾ Single contact blocks to mounting in control stations or DIN rail 35 mm	1NO		1 piece	BC10B-CSW	Z5
	1NC		1 piece	BC01B-CSW	

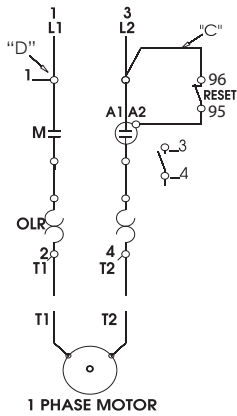
Notes: 1) Compatible with all single of the CSW line pushbuttons, selector switches and pilot lights. To avoid interferences and ensure the performance when use a mushroom pushbutton beside another pushbutton, WEG recommend maintaining an empty hole between the pushbuttons. To close the hole use the ATR accessory;

2) Blocks specific for mounting in base or PBW plastic control stations or DIN rail 35mm;

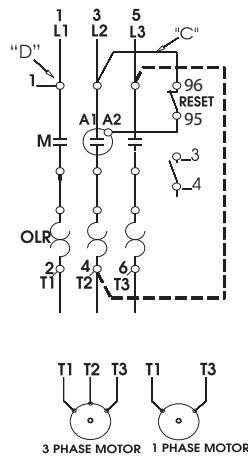
3) Unitary weight.

WIRING DIAGRAM

Single-phase Starter



Three-phase Starter



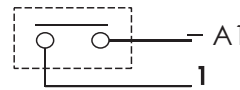
Conversion to single-phase, add jumper wire from L3 to T2 (follow dotted line connection above)

Separate Control

FOR SEPARATE CONTROL, REMOVE WIRES "C" AND "D" IF SUPPLIED AND CONNECT SEPARATE CONTROL LINES TO TERMINAL N° 96 ON THE OVERLOAD RELAY AND TO TERMINAL N° _3 ON THE AUX. CONTACT BLOCK (FOR 3 WIRE CONTROL) OR TO THE CONTACTOR COIL N° A1 (FOR 2 WIRE CONTROL).

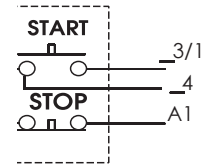
Pilot Devices

2 Wire Control



NOT FOR USE WITH AUTO RESET OL RELAYS.

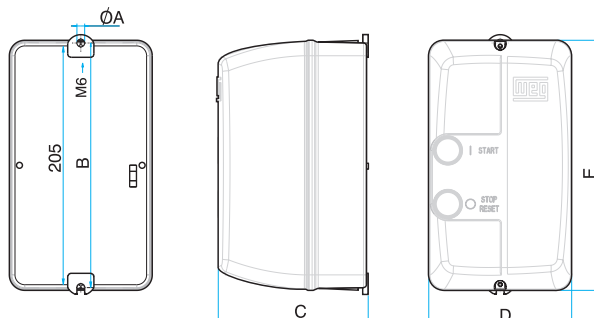
3 Wire Control



DIMENSIONS

SIZE 04 mm(in)	SIZE 06 mm (in)	SIZE 08 mm (in)	SIZE 10 mm (in)
øA = 5.5 (0.2165)	øA = 6.5 (0.3)	øA = 6.0 (0.2)	øA = 7.0 (0.3)
B = 219.0 (8.622)	B = 205 (8.1)	B = 275 (10.8)	B = 355 (14.0)
C = 112 (4.4331)	C = 126 (5.0)	C = 143 (5.6)	C = 167 (6.6)
D = 114.0 (4.4882)	D = 120 (4.7)	D = 180 (7.1)	D = 250 (9.9)
E = 229.5 (9.0354)	E = 210 (8.3)	E = 280 (11.0)	E = 360 (14.2)

Provision for cable gland fitting	Standard		
	Top	Bottom	Back
Size 04	2 x 1/2" - 3/4" PG13.5	2 x 1/2" - 3/4" PG13.5	4 X 1/2" PG13.5
Size 06		2 x 1/2" and 3/4"	ø22mm (0.9in)
Size 08	2 x 3/4" and 1"	2 x 3/4" and 1"	-
Size 10	2 x 3/4" and 1"	2 x 3/4" and 1"	-
	1 x 1" and 1 1/4"	1 x 1" and 1 1/4"	-



For wall mounting on starters size 08 and 10, four screws with the following characteristics should be used:

- Pan, dome or rounded shaped head;
- Starter size 08:
 - Screws size 1/4 (or M6 – ISO Standard);
 - Dimensions: diameter thread shall be maximum 1/4 in and diameter head shall be maximum 15/64 in.
- Starter size 10:
 - Screws size 1/2 (or M5 – ISO Standard);
 - Dimensions: diameter thread shall be maximum 0.236 in and diameter head shall be maximum 0.394 in.