

Upgrade to LED Technology Product Comparison Guide

Mach LED Plus
Direct Replacement for
RL70 Series

High output and through-wired
variants available for all models,
consult factory

Length

Diameter

Lamp Life (hrs)

Operating Voltage

Power Consumption

Lumen Package

Illuminance (Ave. Lux)

IP Rating

Connection

Photometric Data

New Product Highlights

RL70 Series
Part #: 111 450 001



29.4 in. [747mm]

2.75 in. [70mm]

10,000

24V DC

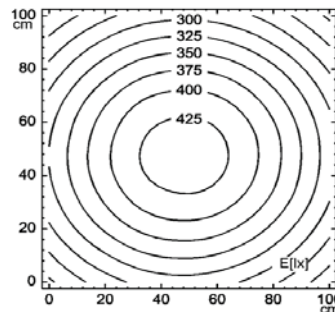
36W

2,900

337

IP67

Wire w/ Cable Gland



Mach LED Plus
Part #: 113 077 000



31.1 in. [790mm]

2.75 in. [70mm]

50,000

24V DC

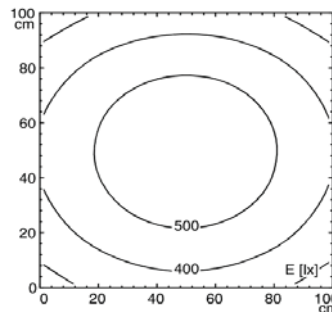
16W

1,250

444

IP67

M12 Waterproof



Mach LED Plus
Part#: 113 069 000



25.6 in. [650mm]

2.75 in. [70mm]

50,000

24V DC

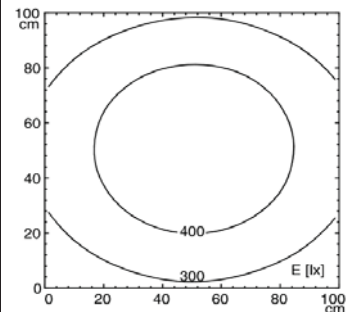
13W

1,000

364

IP67

M12 Waterproof



- Up to 70% energy savings compared to fluorescent lamps
- Maintenance-free LED light source
- Robust Aluminum housing, high performance plastic, and 4mm safety glass
- Resistant to coolants and lubricants
- Reuse existing RL70 mounting when replaced with similar length
- ETL/cETL approved